

Date: 07/08/2020

GC/MS Analysis Laboratory Report

Product Name: Clove Bud Oil

Craftiviti Sdn. Bhd.

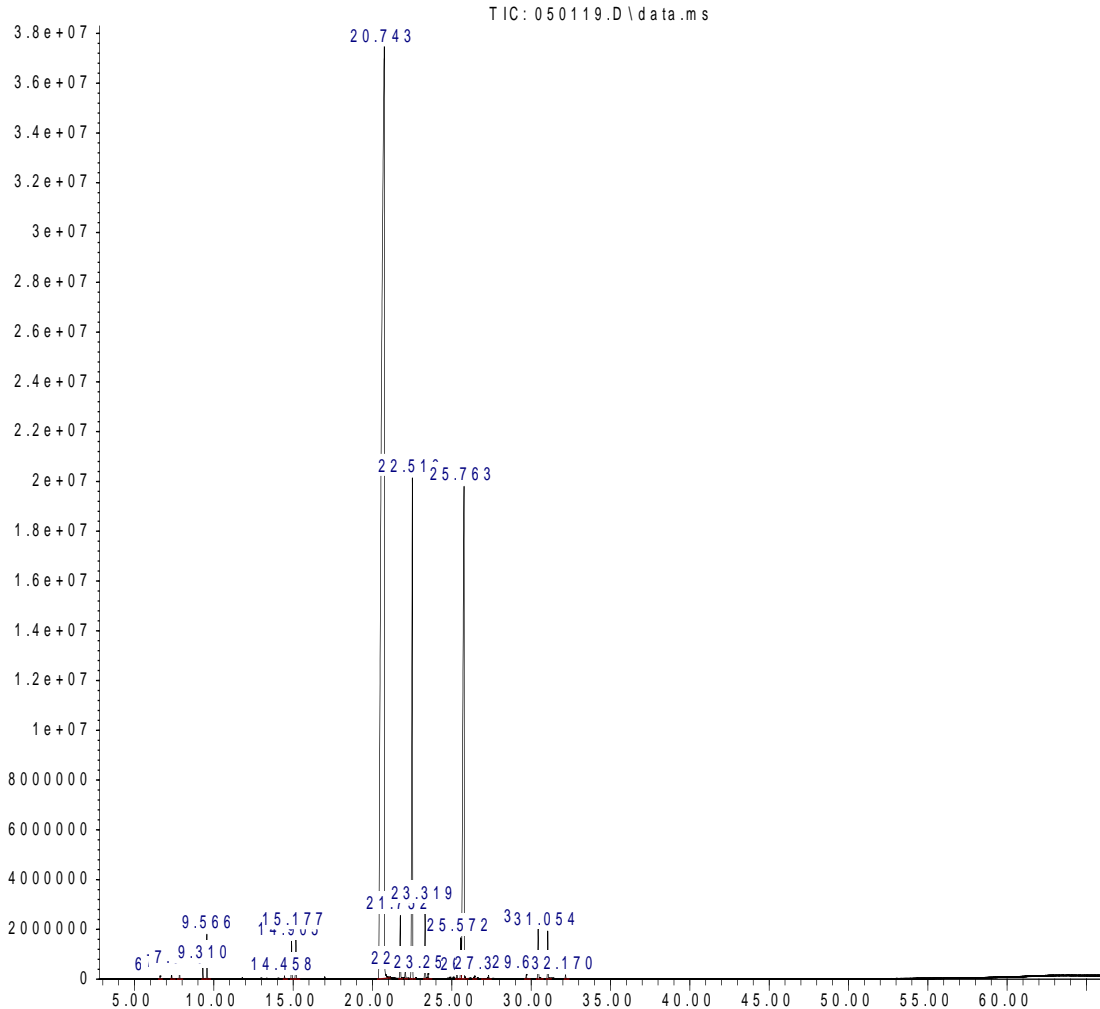
Unit D-1-46, 1st Floor, Block Dahlia, 10 Boulevard, PJU6A, SPRINT Highway,
47400 Petaling Jaya, Selangor, Malaysia.

Tel: 03 7499 5553 | enquiry@craftiviti.com | www.craftiviti.com

GCMS ANALYSIS

Product Name: Clove Bud Oil

Abundance



Time-->

Due to volume turnover, this report is not lot specific. It is representation of the quality of this oil produced by the manufacturer of this product. Specific lots may vary slightly as this is the case in natural products.

Disclaimer & Caution:

Please refer to all the relevant technical information specific to the product prior to use. The information contained in this document is obtained from current and reliable sources. Craftiviti Sdn Bhd provides the information contained herein but makes no representation as to its comprehensiveness or accuracy. Individuals receiving this information must exercise their independent judgement in determining its appropriateness for a particular purpose. The user of the product is solely responsible for compliance with all laws and regulations applying to the use of the products, including intellectual property rights of third parties. As the ordinary or otherwise use(s) of this product is outside the control of Craftiviti Sdn Bhd, no representation of warranty, expressed or implied, is made as to the effect(s) of such use(s), including damage or injury or the results obtained. The liability of Craftiviti Sdn Bhd is limited to the value of the goods and does not include any consequential loss. Craftiviti Sdn Bhd shall not be responsible for any damages resulting from use or reliance upon this information. In the event of any dispute, the customer hereby agrees that jurisdiction is limited to the state of Malaysia.

Craftiviti Sdn. Bhd.

Unit D-1-46, 1st Floor, Block Dahlia, 10 Boulevard, PJU6A, SPRINT Highway,
47400 Petaling Jaya, Selangor, Malaysia.

Tel: 03 7499 5553 | enquiry@craftiviti.com | www.craftiviti.com

GCMS ANALYSIS

Product Name: Clove Bud Oil

PK	RT	Area %	Library/ID	CAS
1	6.6154	0.0363	Pinene <alpha-> \$\$ Bicyclo[3.1.1]hept-2-ene, 2,6,6-trimethyl-	000080-56-8
2	7.3389	0.0749	Benzaldehyde \$\$ Benzaldehyde	000100-52-7
3	7.8401	0.1271	Pinene <beta-> \$\$ Bicyclo[3.1.1]heptane, 6,6-dimethyl-2-methylene-	000127-91-3
4	9.3098	0.19	Cymene <para-> \$\$ Benzene, 1-methyl-4-(1-methylethyl)-	000099-87-6
5	9.5664	0.5999	Benzyl alcohol	000100-51-6
6	14.458	0.0423	Terpinen-4-ol	000562-74-3
7	14.9051	0.5391	Terpineol	1000411-59-6
8	15.1771	0.7428	Estragole	000140-67-0
9	20.7426	67.5411	Eugenol	000097-53-0
10	21.752	1.0451	Vanillin	000121-33-5
11	22.0684	0.1407	Isoeugenol <Z-> \$\$ Phenol, 2-methoxy-4-(1Z)-1-propen-1-yl-	005912-86-7
12	22.5099	10.0909	Caryophyllene <(E)->	013877-93-5
13	23.3186	1.1256	Isoeugenol <Z->	005912-86-7
14	23.501	0.0888	Humulene <alpha-> \$\$ 1,4,8-Cycloundecatriene, 2,6,6,9-tetramethyl-, (1E,4E,8E)-	006753-98-6
15	25.3269	0.086	Longifolene-(V4)	061262-67-7
16	25.5716	0.6409	Cadinene <delta->	016729-01-4

Disclaimer & Caution:

Please refer to all the relevant technical information specific to the product prior to use. The information contained in this document is obtained from current and reliable sources. Craftiviti Sdn Bhd provides the information contained herein but makes no representation as to its comprehensiveness or accuracy. Individuals receiving this information must exercise their independent judgement in determining its appropriateness for a particular purpose. The user of the product is solely responsible for compliance with all laws and regulations applying to the use of the products, including intellectual property rights of third parties. As the ordinary or otherwise use(s) of this product is outside the control of Craftiviti Sdn Bhd, no representation of warranty, expressed or implied, is made as to the effect(s) of such use(s), including damage or injury or the results obtained. The liability of Craftiviti Sdn Bhd is limited to the value of the goods and does not include any consequential loss. Craftiviti Sdn Bhd shall not be responsible for any damages resulting from use or reliance upon this information. In the event of any dispute, the customer hereby agrees that jurisdiction is limited to the state of Malaysia.



GCMS ANALYSIS

Product Name: Clove Bud Oil

17	25.7634	15.0319	Acetylegeugenol	000093-28-7
18	26.4338	0.0611	Alloaromadendrene oxide-(1)	1000156-12-8
19	27.3183	0.0826	Caryophyllene oxide	001139-30-6
20	29.6967	0.0723	2,6,10-Dodecatrien-1-ol, 3,7,11-trimethyl-, (Z,E)-	003790-71-4
21	30.4401	0.8661	Farnesol	004602-84-0
22	31.0545	0.7136	Farnesol	004602-84-0
23	32.1696	0.0608	Benzyl benzoate \$\$ Benzoic acid, phenylmethyl ester	000120-51-4

Disclaimer & Caution:

Please refer to all the relevant technical information specific to the product prior to use. The information contained in this document is obtained from current and reliable sources. Craftiviti Sdn Bhd provides the information contained herein but makes no representation as to its comprehensiveness or accuracy. Individuals receiving this information must exercise their independent judgement in determining its appropriateness for a particular purpose. The user of the product is solely responsible for compliance with all laws and regulations applying to the use of the products, including intellectual property rights of third parties. As the ordinary or otherwise use(s) of this product is outside the control of Craftiviti Sdn Bhd, no representation of warranty, expressed or implied, is made as to the effect(s) of such use(s), including damage or injury or the results obtained. The liability of Craftiviti Sdn Bhd is limited to the value of the goods and does not include any consequential loss. Craftiviti Sdn Bhd shall not be responsible for any damages resulting from use or reliance upon this information. In the event of any dispute, the customer hereby agrees that jurisdiction is limited to the state of Malaysia.

Craftiviti Sdn. Bhd.

Unit D-1-46, 1st Floor, Block Dahlia, 10 Boulevard, PJU6A, SPRINT Highway,
47400 Petaling Jaya, Selangor, Malaysia.

Tel: 03 7499 5553 | enquiry@craftiviti.com | www.craftiviti.com