

**Date:** 07/08/2020

# **GC/MS Analysis Laboratory Report**

**Product Name: Clary Sage Oil**

Craftiviti Sdn. Bhd.

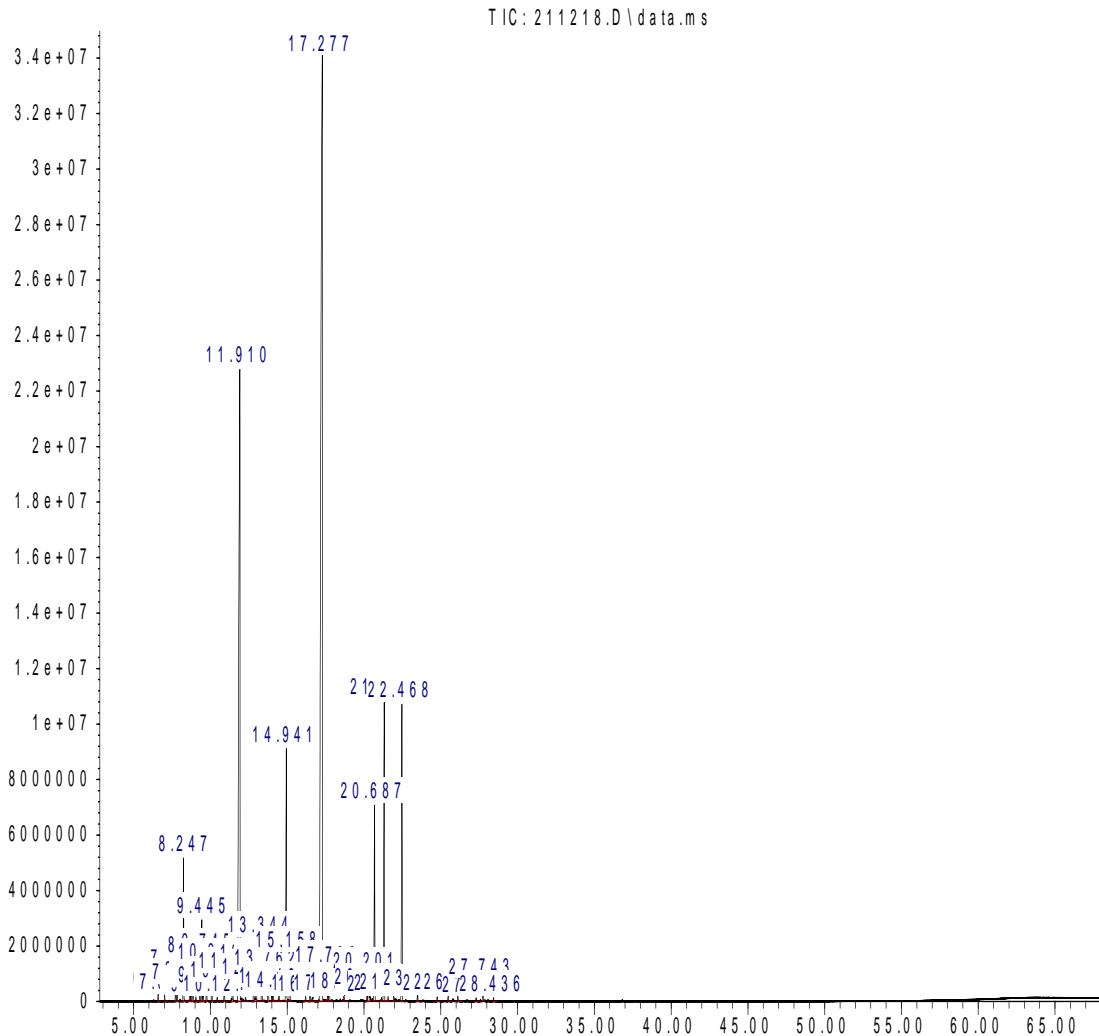
Unit D-1-46, 1st Floor, Block Dahlia, 10 Boulevard, PJU6A, SPRINT Highway,  
47400 Petaling Jaya, Selangor, Malaysia.

Tel: 03 7499 5553 | [enquiry@craftiviti.com](mailto:enquiry@craftiviti.com) | [www.craftiviti.com](http://www.craftiviti.com)

## GCMS ANALYSIS

**Product Name: Clary Sage Oil**

Abundance



Time -->

***Due to volume turnover, this report is not lot specific. It is representation of the quality of this oil produced by the manufacturer of this product. Specific lots may vary slightly as this is the case in natural products.***

### Disclaimer & Caution:

Please refer to all the relevant technical information specific to the product prior to use. The information contained in this document is obtained from current and reliable sources. Craftiviti Sdn Bhd provides the information contained herein but makes no representation as to its comprehensiveness or accuracy. Individuals receiving this information must exercise their independent judgement in determining its appropriateness for a particular purpose. The user of the product is solely responsible for compliance with all laws and regulations applying to the use of the products, including intellectual property rights of third parties. As the ordinary or otherwise use(s) of this product is outside the control of Craftiviti Sdn Bhd, no representation of warranty, expressed or implied, is made as to the effect(s) of such use(s), including damage or injury or the results obtained. The liability of Craftiviti Sdn Bhd is limited to the value of the goods and does not include any consequential loss. Craftiviti Sdn Bhd shall not be responsible for any damages resulting from use or reliance upon this information. In the event of any dispute, the customer hereby agrees that jurisdiction is limited to the state of Malaysia.

## GCMS ANALYSIS

### Product Name: Clary Sage Oil

PK	RT	Area %	Library/ID	CAS
1	6.6019	0.1302	Pinene <alpha-> \$\$ Bicyclo[3.1.1]hept-2-ene, 2,6,6-trimethyl-	000080-56-8
2	7.0208	0.0917	2,2-Dimethyl-5-methylene norbornane \$\$ Bicyclo(2.2.1)heptane, 2,2-dimethyl-5-methylene-	000497-32-5
3	7.7338	0.4206	Sabinene \$\$ Bicyclo[3.1.0]hexane, 4-methylene-1-(1-methylethyl)-	003387-41-5
4	7.834	0.2371	Pinene <beta-> \$\$ Bicyclo[3.1.1]heptane, 6,6-dimethyl-2-methylene-	000127-91-3
5	8.2473	2.0592	Myrcene	000123-35-3
6	8.6661	0.3214	Phellandrene <alpha-> \$\$ 1,3-Cyclohexadiene, 2-methyl-5-(1-methylethyl)-	000099-83-2
7	8.7352	0.128	3-Hexen-1-ol, acetate, (Z)-	003681-71-8
8	8.8547	0.6365	Terpinene <gamma->	000099-85-4
9	9.0587	0.0739	Terpinene <alpha-> \$\$ 1,3-Cyclohexadiene, 1-methyl-4-(1-methylethyl)-	000099-86-5
10	9.3127	0.2247	Cymene <para-> \$\$ Benzene, 1-methyl-4-(1-methylethyl)-	000099-87-6
11	9.4453	1.2366	Limonene	000138-86-3
12	9.5307	0.2006	Eucalyptol	000470-82-6
13	9.7449	0.6539	trans-.beta.-Ocimene	003779-61-1
14	10.0878	0.5223	Ocimene <(E)-, beta->	003779-61-1
15	10.4428	0.0579	Terpinene <gamma-> \$\$ 1,4-Cyclohexadiene, 1-methyl-4-(1-methylethyl)-	000099-85-4
16	10.9026	0.297	Linalool oxide <cis-> \$\$ 2-Furanmethanol, 5-ethenyltetrahydro-alpha,alpha,5-trimethyl-, (2R,5S)-	005989-33-3
17	11.4387	0.5179	Cyclohexene, 1-methyl-4-(1-methylethylidene)-	000586-62-9

#### Disclaimer & Caution:

Please refer to all the relevant technical information specific to the product prior to use. The information contained in this document is obtained from current and reliable sources. Craftiviti Sdn Bhd provides the information contained herein but makes no representation as to its comprehensiveness or accuracy. Individuals receiving this information must exercise their independent judgement in determining its appropriateness for a particular purpose. The user of the product is solely responsible for compliance with all laws and regulations applying to the use of the products, including intellectual property rights of third parties. As the ordinary or otherwise use(s) of this product is outside the control of Craftiviti Sdn Bhd, no representation of warranty, expressed or implied, is made as to the effect(s) of such use(s), including damage or injury or the results obtained. The liability of Craftiviti Sdn Bhd is limited to the value of the goods and does not include any consequential loss. Craftiviti Sdn Bhd shall not be responsible for any damages resulting from use or reliance upon this information. In the event of any dispute, the customer hereby agrees that jurisdiction is limited to the state of Malaysia.

Craftiviti Sdn. Bhd.

Unit D-1-46, 1st Floor, Block Dahlia, 10 Boulevard, PJU6A, SPRINT Highway,  
47400 Petaling Jaya, Selangor, Malaysia.

Tel: 03 7499 5553 | enquiry@craftiviti.com | www.craftiviti.com

## GCMS ANALYSIS

### Product Name: Clary Sage Oil

18	11.9103	21.9473	Linalool	78-70-6
19	12.301	0.063	Fenchyl alcohol \$\$ Bicyclo[2.2.1]heptan-2-ol, 1,3,3-trimethyl-	001632-73-1
20	12.8214	0.5322	Ocimene <neo-allo->	003016-19-1
21	12.964	0.5313	2,4-Heptadienal, 2,4-dimethyl-	042452-48-2
22	13.3442	1.0468	Camphor	000076-22-2
23	13.7616	0.5046	Isoborneol	000124-76-5
24	13.9969	0.0772	Terpineol <beta-, trans-> \$\$ Cyclohexanol, 1-methyl-4-(1-methylethenyl)-, trans-	007299-40-3
25	14.0674	0.2304	Borneol \$\$ Bicyclo[2.2.1]heptan-2-ol, 1,7,7-trimethyl-, (1R,2S,4R)-	000507-70-0
26	14.4706	0.1435	Terpinen-4-ol \$\$ 3-Cyclohexen-1-ol, 4-methyl-1-(1-methylethyl)-	000562-74-3
27	14.9411	4.7367	Terpineol	1000411-59-6
28	15.1579	0.7746	Terpineol <gamma->	000586-81-2
29	16.1985	0.1077	2,6-Octadien-1-ol, 3,7-dimethyl-, (Z)-	000106-25-2
30	16.4921	0.1813	p-Mentha-1,8-dien-7-ol	000536-59-4
31	16.6365	0.0874	Neral \$\$ 2,6-Octadienal, 3,7-dimethyl-, (2Z)-	000106-26-3
32	17.2768	43.5848	Linalyl acetate	000115-95-7
33	17.639	0.0788	Geranial \$\$ 2,6-Octadienal, 3,7-dimethyl-, (2E)-	000141-27-5
34	17.7391	0.5232	Dihydrolinalool	018479-51-1
35	18.6859	0.1812	Docosa-2,6,10,14,18-pentaen-22-al, 2,6,10,15,18-pentamethyl-, all-trans	1000163-04-7

#### Disclaimer & Caution:

Please refer to all the relevant technical information specific to the product prior to use. The information contained in this document is obtained from current and reliable sources. Craftiviti Sdn Bhd provides the information contained herein but makes no representation as to its comprehensiveness or accuracy. Individuals receiving this information must exercise their independent judgement in determining its appropriateness for a particular purpose. The user of the product is solely responsible for compliance with all laws and regulations applying to the use of the products, including intellectual property rights of third parties. As the ordinary or otherwise use(s) of this product is outside the control of Craftiviti Sdn Bhd, no representation of warranty, expressed or implied, is made as to the effect(s) of such use(s), including damage or injury or the results obtained. The liability of Craftiviti Sdn Bhd is limited to the value of the goods and does not include any consequential loss. Craftiviti Sdn Bhd shall not be responsible for any damages resulting from use or reliance upon this information. In the event of any dispute, the customer hereby agrees that jurisdiction is limited to the state of Malaysia.

Craftiviti Sdn. Bhd.

Unit D-1-46, 1st Floor, Block Dahlia, 10 Boulevard, PJU6A, SPRINT Highway,  
47400 Petaling Jaya, Selangor, Malaysia.

Tel: 03 7499 5553 | enquiry@craftiviti.com | www.craftiviti.com

## GCMS ANALYSIS

### Product Name: Clary Sage Oil

36	20.2013	0.464	Terpinyl acetate <alpha-> \$\$ 3-Cyclohexene-1-methanol, alpha,alpha,4-trimethyl-, acetate	000080-26-2
37	20.3087	0.3283	Citronellyl isobutyrate \$\$ Propanoic acid, 2-methyl-, 3,7-dimethyl-6-octenyl ester	000097-89-2
38	20.6872	3.4193	Geranyl isobutyrate	002345-26-8
39	21.143	0.084	Cyclohexene, 3-methyl-6-(1-methylethylidene)-	000586-63-0
40	21.3139	5.7773	Geranyl acetate	000105-87-3
41	21.5676	0.0677	Urea, (p-hydroxyphenyl)-	001566-41-2
42	21.9399	0.084	Eugenol <methyl-> \$\$ Benzene, 1,2-dimethoxy-4-(2-propenyl)-	000093-15-2
43	22.4684	5.6638	Caryophyllene <(E)->	013877-93-5
44	23.4884	0.1728	Humulene <alpha-> \$\$ 1,4,8-Cycloundecatriene, 2,6,6,9-tetramethyl-, (1E,4E,8E)-	006753-98-6
45	24.768	0.0849	1-Cyclohexyl-2-buten-1-ol (c,t)	079605-62-2
46	25.4847	0.1115	5H-Oxazolo[3,2-a]pyridine-8-carbonitrile, 6-ethyl-2,3-dihydro-2,7-dimethyl-5-oxo-	1000337-58-3
47	26.1098	0.1037	Bisabolene <(E)-, alpha-> \$\$ Cyclohexene, 4-[(1E)-1,5-dimethyl-1,4-hexadienyl]-1-methyl-	025532-79-0
48	27.3044	0.0732	Bicyclo[7.2.0]undec-4-ene, 4,11,11-trimethyl-8-methylene-	013877-93-5
49	27.7429	0.3575	1(2H)-Naphthalenone, 3,4-dihydro-3,3,6,8-tetramethyl-	005409-55-2
50	28.4355	0.0664	Isolongifolanone <trans-> \$\$ 2H-2,4a-Methanonaphthalen-8(5H)-one, hexahydro-1,1,5,5-tetramethyl-(2S,4aS,8aS)	026839-51-0

#### Disclaimer & Caution:

Please refer to all the relevant technical information specific to the product prior to use. The information contained in this document is obtained from current and reliable sources. Craftiviti Sdn Bhd provides the information contained herein but makes no representation as to its comprehensiveness or accuracy. Individuals receiving this information must exercise their independent judgement in determining its appropriateness for a particular purpose. The user of the product is solely responsible for compliance with all laws and regulations applying to the use of the products, including intellectual property rights of third parties. As the ordinary or otherwise use(s) of this product is outside the control of Craftiviti Sdn Bhd, no representation of warranty, expressed or implied, is made as to the effect(s) of such use(s), including damage or injury or the results obtained. The liability of Craftiviti Sdn Bhd is limited to the value of the goods and does not include any consequential loss. Craftiviti Sdn Bhd shall not be responsible for any damages resulting from use or reliance upon this information. In the event of any dispute, the customer hereby agrees that jurisdiction is limited to the state of Malaysia.



## GCMS ANALYSIS

**Product Name: Clary Sage Oil**

**Disclaimer & Caution:**

Please refer to all the relevant technical information specific to the product prior to use. The information contained in this document is obtained from current and reliable sources. Craftiviti Sdn Bhd provides the information contained herein but makes no representation as to its comprehensiveness or accuracy. Individuals receiving this information must exercise their independent judgement in determining its appropriateness for a particular purpose. The user of the product is solely responsible for compliance with all laws and regulations applying to the use of the products, including intellectual property rights of third parties. As the ordinary or otherwise use(s) of this product is outside the control of Craftiviti Sdn Bhd, no representation of warranty, expressed or implied, is made as to the effect(s) of such use(s), including damage or injury or the results obtained. The liability of Craftiviti Sdn Bhd is limited to the value of the goods and does not include any consequential loss. Craftiviti Sdn Bhd shall not be responsible for any damages resulting from use or reliance upon this information. In the event of any dispute, the customer hereby agrees that jurisdiction is limited to the state of Malaysia.

Craftiviti Sdn. Bhd.

Unit D-1-46, 1st Floor, Block Dahlia, 10 Boulevard, PJU6A, SPRINT Highway,  
47400 Petaling Jaya, Selangor, Malaysia.

Tel: 03 7499 5553 | enquiry@craftiviti.com | www.craftiviti.com