



SSV WORKS, 201 N. Rice Ave Unit A, Oxnard, CA 93030
www.SSVworks.com | Phone: 818-991-1778 | Fax: 866-293-6751

X32-PUS10

2016+ Can-Am Maverick x3

10" Passenger Side Under Seat Enclosure

WARRANTY INFORMATION:

All SSV Works enclosures are covered by a limited lifetime warranty against defects in material or workmanship. All SSV Works Electronics are covered by a limited 1 year warranty against defects in material or workmanship. All Kicker Speakers are covered by a limited 1 year warranty against defects in material or workmanship. All Kicker Amplifiers are covered by a limited 2 year warranty against defects in material or workmanship. Labor for replacement of defective components is not covered. Contact SSV Works for further warranty information.



Please read and understand these instructions completely before installation to avoid possible injury, or damage to the accessory or vehicle.

TOOLS NEEDED FOR INSTALLATION

- 10mm, 13mm, 16mm and 18mm Sockets & Wrenches

- T-30 Torx Driver

- 1½" Hole Saw

- Hole Punch / Scribe Tool

- Ratchet & Extension

- #3 Phillips Screwdriver

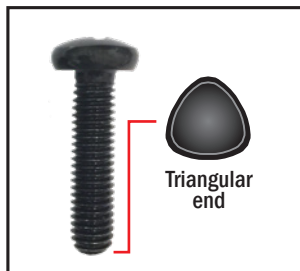
PARTS LIST IMAGES



1. X32-PUS10 Enclosure



2. M6x1.0x16mm T30 Torx Screws & Washers x10



3. Thread Rolling Screw x2 (#3 Phillips Screwdriver)



4. M6x1.0x25mm T30 Torx Screw x1



5. Large Washers x1



6. D-Bracket x1



7. B-Bracket x1



8. Large Bracket



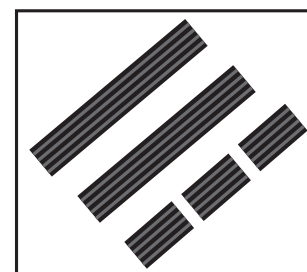
9. Seat Spacer x1



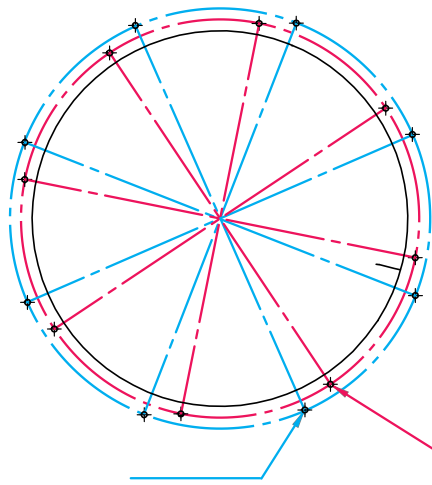
10. Brake Line Spacer x1



11. M6 10mm lock nut x1



12. Foam Strips x5



KICKER HOLE PATTERN

SSV HOLE PATTERN

FOR UNLOADED ENCLOSURES:

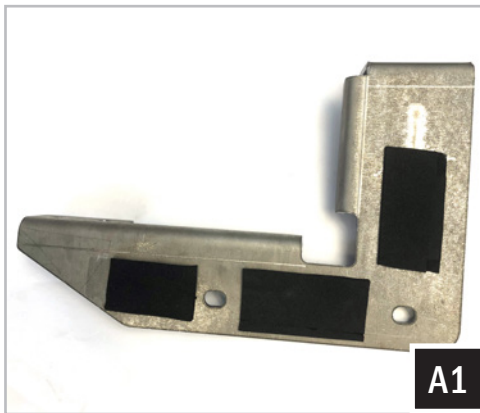
Pink hole pattern: SSV Works Subwoofer

Blue hole pattern: Kicker Subwoofer

If using an alternative brand subwoofer that does not match the existing pre-drilled hole patterns, drill new holes away from the pre-drilled holes. Use the (8) provided #7 screws when installing your own subwoofer.



#7 Screws x 8



A1



A2

A. Apply the short foam strips to the large bracket in the order shown above (A1).
Apply the long foam strips to the outside edges of the enclosure. (Driver outside = left / Passenger outside = right) (A2).



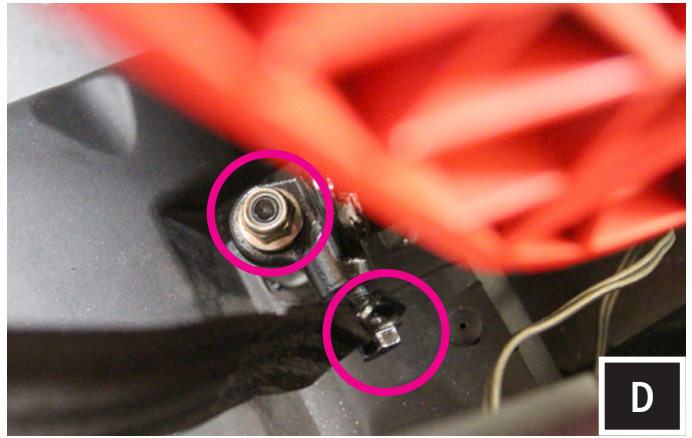
B

B. Fasten the D-Bracket to the bottom right side of the enclosure with the (2) M6x1.0x16mm T30 torx screws and washers.

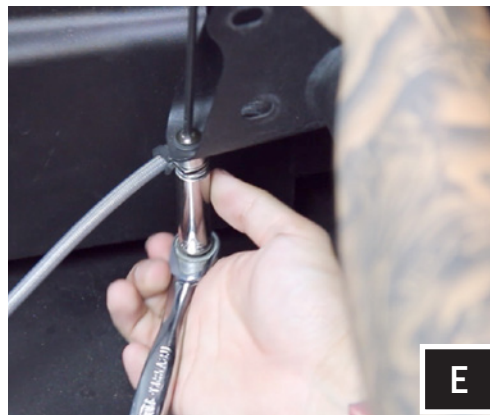


C

C. Secure the large bracket to the right side of the enclosure with (4) M6x1.0x16mm T30 torx screws and washers.



D. For passenger seat removal slide the seat to the furthest back position. Remove the (2) front 13mm bolts. Flip up the seat cushion to access the rear mounting points and remove the (2) 18mm lock nuts. Tilt the seat forward and remove the (1) 16mm seat belt bolt. Disconnect the seat belt sensor if applicable.

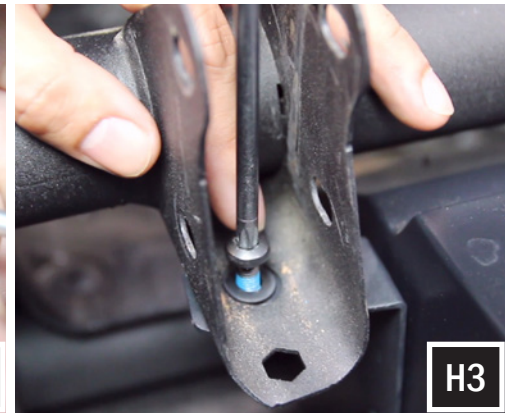
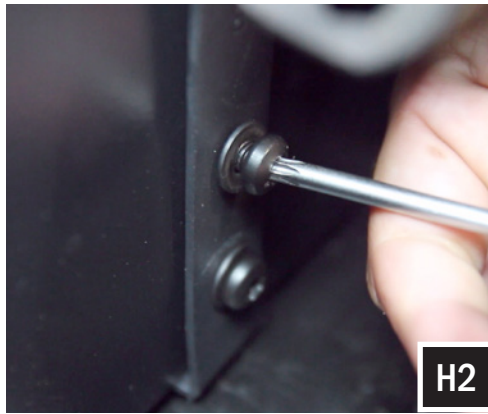


E. Remove the factory 10mm Brake line nut and bolt. Place the M6x1.0x25mm screw and washer through the brake line mounting tab. Slide onto the screw in the following order, brake line spacer, brake line, washer and secure together with the M6 10mm lock nut. (Disregard this step for the 4-seat Maverick X3 Max)



F. Remove the seat mounting spacer from the seat mounting stud towards the center of the car. Feed the enclosure down under the seat bar and simultaneously guide "Bracket D" over the inner seat mounting stud that does not have the spacer. The Factory spacer will not be re-used*** As the enclosure is set into place, the brake line is to run along the dedicated channel on the sub enclosure. Make any routing adjustments to the brake line so the enclosure lays down flat without any tension on the brake line. Bracket D should be sitting flat on top of the floor plastic once the enclosure is in place.

G. Replace the factory seat bolt spacer with the supplied SSV Works spacer on top of Bracket D.



H. Place Bracket B on the left side of the enclosure (H1). Secure Bracket B to the enclosure with (2) M6x1.0x16mm T30 Torx screws and washers (H2). Line up the top of Bracket B with the hole on the seat mounting bracket and secure to Bracket B with a M6x1.0x16mm T30 torx screw and large washer.



I. The large bracket will align over (2) factory holes in the chassis. Using a #3 Phillips screwdriver, secure the large bracket to the chassis with the provided (2) thread rolling screws.



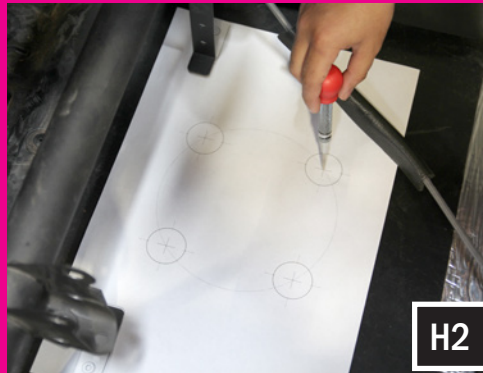
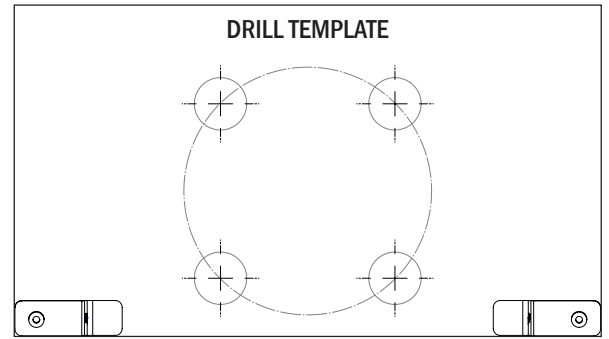
J. Route the speaker wire away from any moving parts and any sharp metal, then connect to the amplifier. Connecting the X32-PUS10 using the pre-installed four-pin connector will require an optional SSV Works plug-&-play harness B-H1152 (sold separately).



X32-PUS10

THIS STEP IS OPTIONAL

Some x3 models have a thinner skid plate that others and may rattle more. We have provided a drill template to help minimize skid plate rattle.

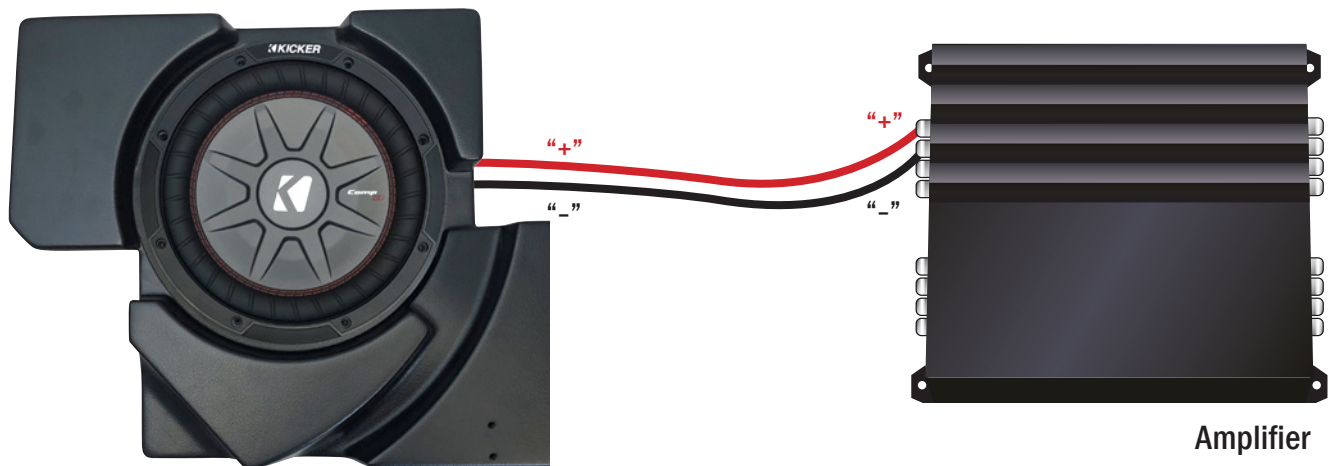


H. To help minimize skid plate rattle, we have supplied a drill template that adds 4 holes to help relieve air pressure that is being generated by the high output of the sub enclosure. Remove sub enclosure and leave brackets in place, and line up the template under the sub mounting brackets (H1). With hole punch/scribe tool mark the 4 drilling points through the template on to the floorboard (H2). Drill the four (4) - 1½" holes with a hole saw (H3).

USING A SSV WORKS HARNESS

Connecting the X32-PUS10 using the pre-installed, four-pin connector will require an optional SSV Works plug-&-play harness (B-H1152 - sold separately). If you are not using the B-H1152 harness, simply cut off the four-pin connector and follow the wiring instruction below.

WIRING INSTRUCTIONS



For proper sound, ensure the speaker polarity is correct connect the "+" to the "+" and the "-" to the "-" from the speaker wire to the amplifier. If using with an SSV Works complete system refer to the amplifier wiring instructions for more detailed wiring information.



X32-PUS10