




SSV WORKS, 201 N. Rice Ave Unit A, Oxnard, CA 93030
 www.SSVworks.com | Phone: 818-991-1778 | Fax: 866-293-6751

WP3-U04SA

Universal Short (42" - 47" Interior Cage Width)
 4 Speaker Overhead WP System

WARRANTY INFORMATION:

All SSV Works enclosures are covered by a limited lifetime warranty against defects in material or workmanship. All SSV Works Electronics are covered by a limited 1 year warranty against defects in material or workmanship. All SSV Works Speakers are covered by a limited 1 year warranty against defects in material or workmanship. Labor for replacement of defective components is not covered. Contact SSV Works for further warranty information.



Please read and understand these instructions completely before installation to avoid possible injury, or damage to the accessory or vehicle.






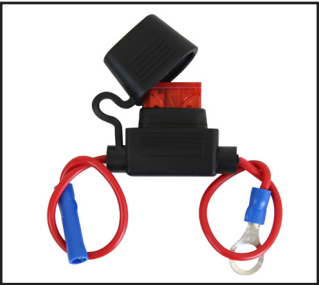


TOOLS NEEDED FOR INSTALLATION

- Wire Crimpers
- Wire Strippers
- Drill with 1/8" Drill bit
- Wrench for Battery Terminal
- #2 Phillips Screwdriver
- #3 Phillips Screwdriver

PARTS LIST

1. WP3-U04SA x 1	5. Mounting Brackets x 2
2. M6 x 1.0 Screws x 8	6. Fuse Holder with Fuse
3. M6 Washers x 8	7. Crimp on ring terminal
4. Mounting Bracket Screws x 4	8. Zip Ties

PARTS LIST IMAGES

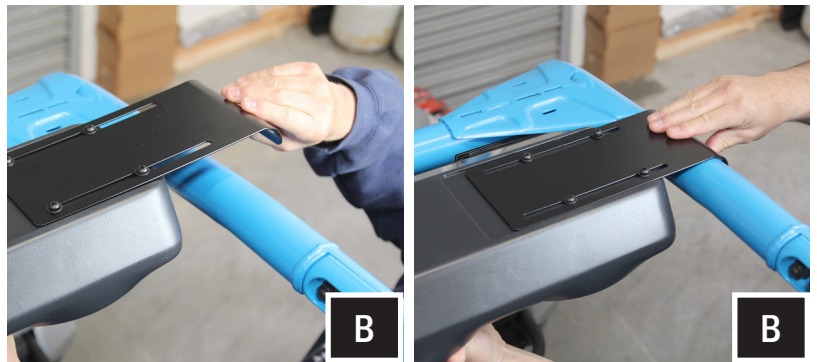
			
1. WP-U04S	2. M6 x 1.0 Screws x 8	3. M6 Washers x 8	4. Mounting Bracket Screws x 4
			
5. Mounting Brackets x 2	6. Fuse Holder with Fuse	7. Crimp on ring terminal	8. Zip ties

INSTALLATION NOTES

To make wiring easier, locate the battery in the vehicle before beginning the installation. The use of a thread locker is recommended on all screws to prevent loosening due to vibration. If the vehicle has a roof, it will need to be removed prior to installation. Once the installation of the WP3-U04SA is complete the roof may be re-installed, modification to the roof may be required for proper fit.



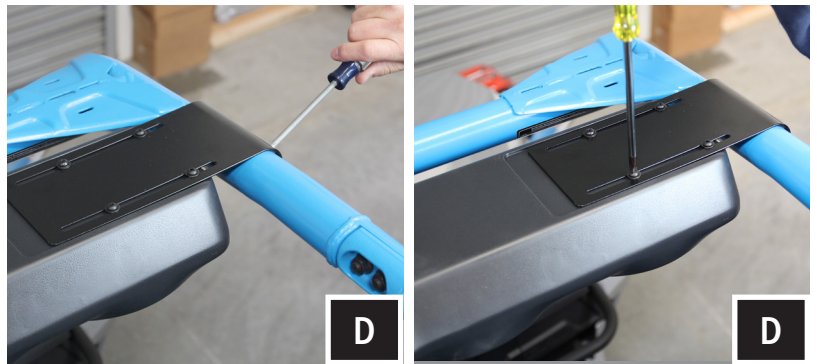
A. Loosely install the 2 mounting brackets onto the enclosure, these brackets will need to slide in and out for mounting depending on the width of your cage.



B. Place the WP3-U04SA onto the cage with the 2 brackets hanging over either side; once the enclosure is centered adjust the bracket width by sliding the brackets toward the center of the vehicle. (Do not tighten screws at this time) The mounting bracket screw locations may need to be changed to get more or less width for the brackets.



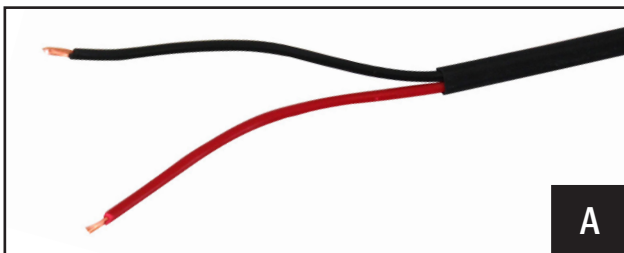
C. With the WP3-U04SA in the proper mounting location, pre drill the bracket mounting holes using the 1/8" drill bit, use the holes in the bracket as a guide.



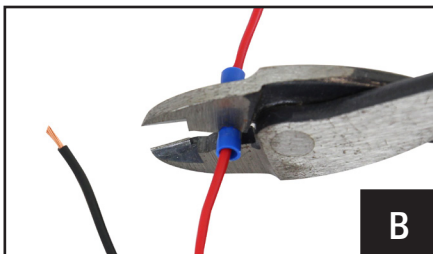
D. Once the holes are drilled mount the brackets to the cage using the screws provided. While applying upward pressure on the center of the enclosure tighten the brackets using the #3 screwdriver.

E. Using the zip ties provided, route the Power/Ground loom to the battery location away from any moving parts or sharp metal.
NOTE: The 4 pin long cable is for adding an SSV Works Powered Subwoofer to the vehicle (Visit www.SSVworks.com for application information)

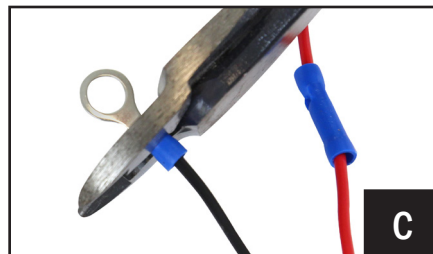
WIRING INSTRUCTIONS



A. Cut the power/ground cable to length; be sure to leave enough wire at the battery location to wire to the battery, strip back approximately 4 inches of the black tubing to expose the red/black wires inside. Strip back 1/4"-1/2" of wire to make your connections.



B. Crimp the supplied fuse holder onto the end of the RED wire and attach to the battery "+" terminal.



C. Crimp the supplied ring terminal to the BLACK wire and attach to the battery "-" terminal.



WP3-U04SA