



SSV WORKS, 201 N. Rice Ave Unit A, Oxnard, CA 93030  
 www.SSVworks.com | Phone: 818-991-1778 | Fax: 866-293-6751

# WP-RZ4GBS10

## RZR 1000 & RZR900 2015+ Powered Glove Box Subwoofer

### WARRANTY INFORMATION:

All SSV Works enclosures are covered by a limited lifetime warranty against defects in material or workmanship. All SSV Works Electronics are covered by a limited 1 year warranty against defects in material or workmanship. All SSV Works Speakers are covered by a limited 1 year warranty against defects in material or workmanship. Labor for replacement of defective components is not covered. Contact SSV Works for further warranty information.



Please read and understand these instructions completely before installation to avoid possible injury, or damage to the accessory or vehicle.

### TOOLS NEEDED FOR INSTALLATION

- |                       |                                |                      |                 |
|-----------------------|--------------------------------|----------------------|-----------------|
| - 10mm & 8mm Socket   | - T-40 Torx Driver             | - Panel removal tool | - Wire Crimpers |
| - Ratchet & Extension | - #2 & #3 Phillips Screwdriver | - Wire Cutters       | - Heat Gun      |

### PARTS LIST IMAGES



1. WP-RZ4GBS10 Enclosure  
(door not included)



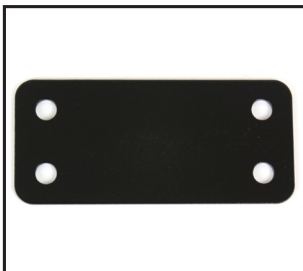
2. 8mm Socket Head Screws & Washers x16



3. Glove Box Door Bracket



4. Lower Mounting Bracket



5. Flat Mounting Bracket "A"



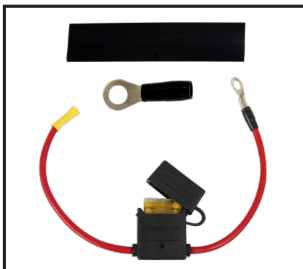
6. Mounting Bracket "B"



7. Left & Right Door Hinge Brackets



8. #14 Screws x1



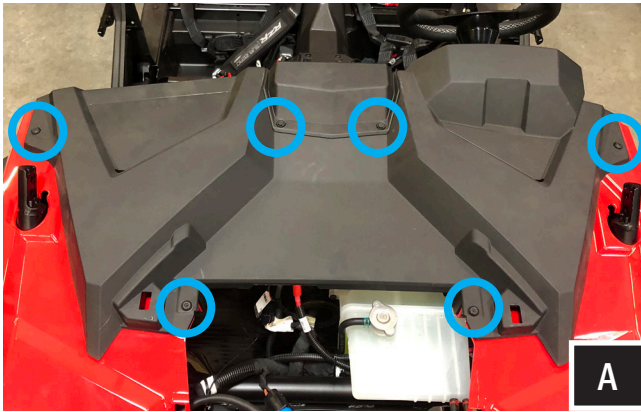
9. Fuseholder with fuse, Heat Shrink, Ring terminal  
(1 each)



10. Audio extension cable  
(94")



11. Zip ties



A. Turn the hood locks, remove the hood. Extract the (4) T40 torx screws and extract the (2) push pins from the dash. From inside the machine, pull dash towards you and lift to unclip. Once unclipped remove the dash cap.



B. Extract the (4) T40 screws surrounding the ride command system and (2) push pins found in the dash pocket. \*for non-ride command vehicles, less hardware may need to be removed for this step.



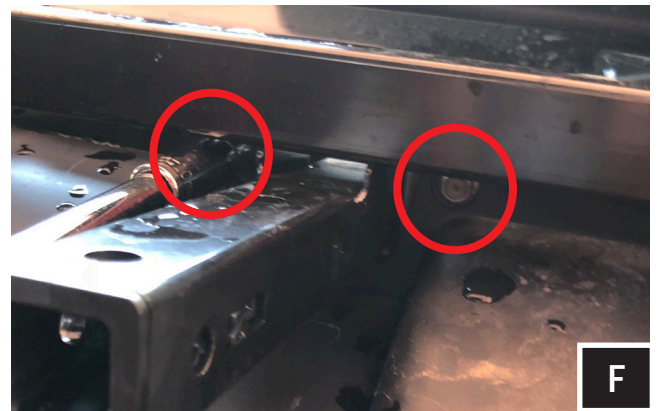
C. Unclip the dash surrounding the glovebox. Once unclipped, gently pull the dash forward and remove the upper dash pocket.



D. Extract the (1) T40 torx that secures the lower dash pocket



E. Disconnect the USB and unclip the LED from the lower dash pocket. Remove the lower dash pocket.  
Label / take photos of the harnesses connected to the dash. Once recorded, disconnect harnesses, and remove dash.



F. With the dash removed, extract the (2) 10mm bolts retaining the glovebox and remove the glovebox.





G. Install door latch onto enclosure with the provided (2) 8mm screws and washers.



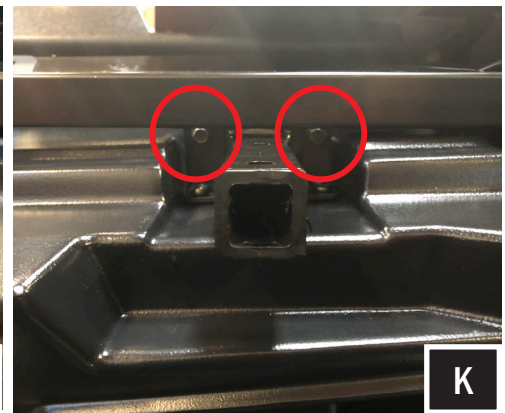
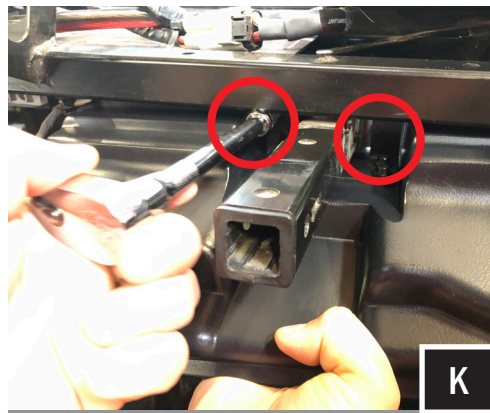
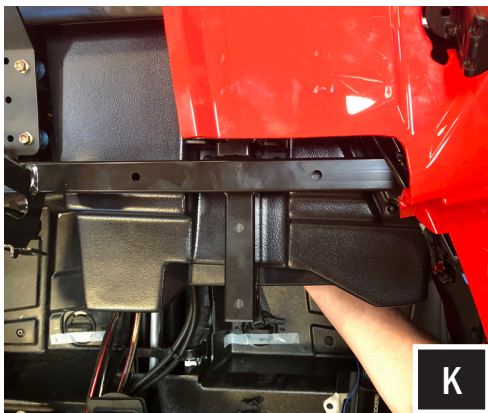
H. Using (4) 8mm screws and washers, attach Bracket "B" to the enclosure.



I. Install left and right door hinge brackets using (2) 8mm screws and washers for each side.



J. Install lower mounting bracket onto enclosure with the provided (2) 8mm screws and washers.



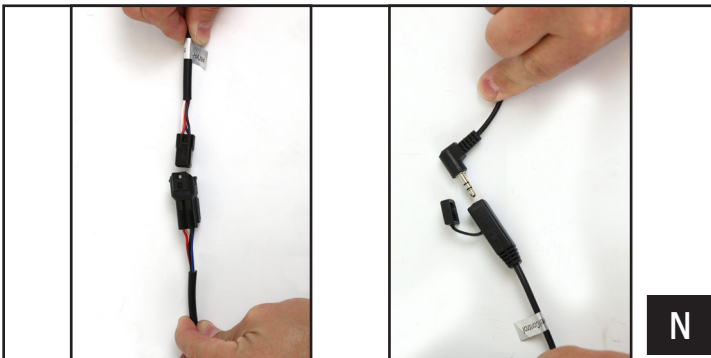
K. Lift the enclosure into place. Using the factory glove box mounting hardware, fasten the enclosure into place.



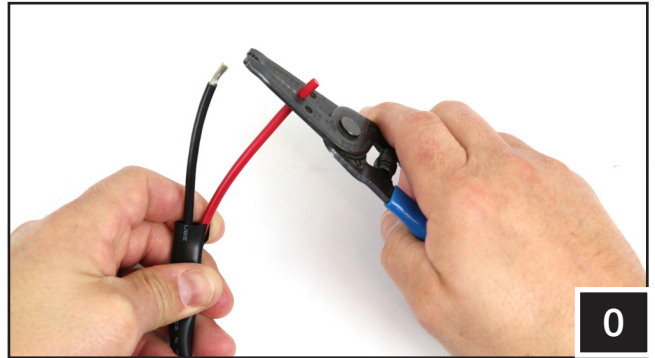
L. Place Bracket "A" into place towards the firewall, and fasten it into place with the (4) 8mm socket head screws and washers provided with the kit.



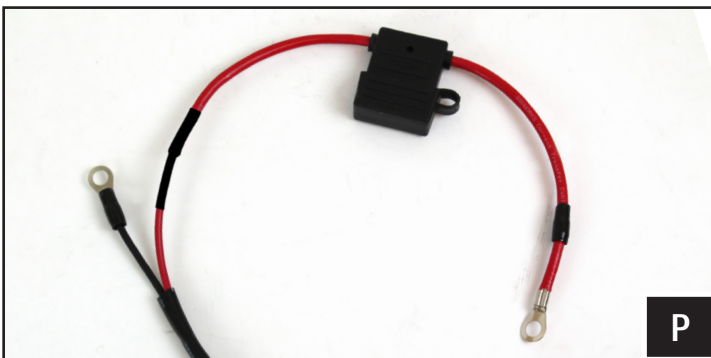
M. Fasten the provided #14 screw to secure the enclosure lower mounting bracket.



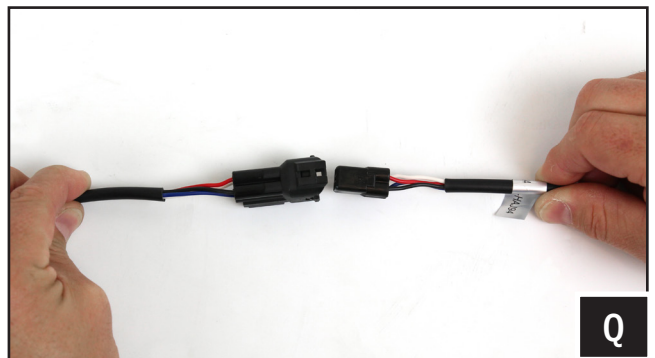
N. Route the Power and Ground wires to the battery, plug in and route the 4 PIN weatherproof connector to the audio output location (if using an SSV works WP series overhead stereo, this will be located toward the bottom of the cage where the wire loom runs of the overhead unit, if using another source route the 4 pin connector to that location) be sure to avoid moving parts and sharp edges while routing the cables. If you have purchased the optional SSV Works Subwoofer Level Control (WP-ASLC), plug in now and route to dash mounting location



O. Strip back ¼" - ½" of the Red and Black wires (This loom can be cut shorter if there is excess wire at the battery location)



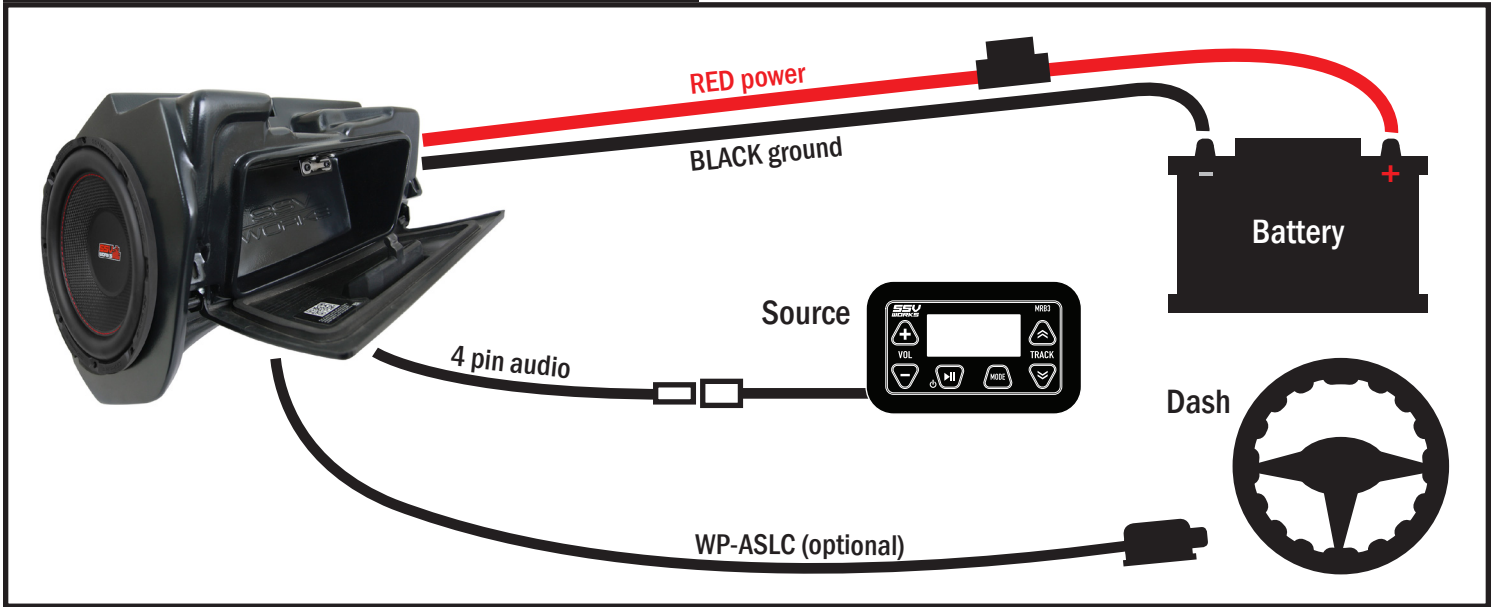
P. Slide the black heat shrink onto the red wire, crimp the supplied fuse holder to the end of the RED wire, seal the heat shrink with heat at the connection and attach to the battery "+" terminal, crimp the supplied ring terminal to the BLACK wire and attach to the battery "-" terminal



Q. Connect the 4 PIN weatherproof connector to the audio output of the source unit.



# WIRING INSTRUCTIONS



R. Attach the factory glovebox door and reattach all factory panels.

## WP-HRCAF

WP SYSTEM WIRE HARNESS TO USE ALTERNATIVE AUDIO SOURCE UNIT (sold separately)

