



SSV WORKS, 201 N. Rice Ave Unit A, Oxnard, CA 93030
 www.SSVworks.com | Phone: 818-991-1778 | Fax: 866-293-6751

SS-F65

Polaris Slingshot

Front Kick Panel Speaker Pods

WARRANTY INFORMATION:

All SSV Works enclosures are covered by a limited lifetime warranty against defects in material or workmanship. All SSV Works Electronics are covered by a limited 1 year warranty against defects in material or workmanship. Labor for replacement of defective components is not covered. All SSV Works Speakers are covered by a limited 1 year warranty against defects in material or workmanship. Contact SSV Works for further warranty information.



Please read and understand these instructions completely before installation to avoid possible injury, or damage to the accessory or vehicle.

TOOLS NEEDED FOR INSTALLATION

- #2 Phillips Screw Driver
- T40 Torx Driver
- T8 Torx Driver (for tweeter plates)

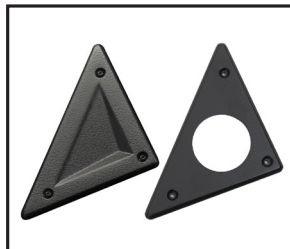
PARTS LIST

- | | | |
|--------------------------------|-----------------------|---|
| 1. Kickpod, Driver Side x 1 | 7. Bracket "D" x 1 | 13. M6 x 16mm Screw x 12 |
| 2. Kickpod, Passenger Side x 1 | 8. Bracket "DD" x 1 | 14. M6 Washer x 18 |
| 3. Blank Plate D1 x 1 | 9. Bracket "DDD" x 1 | 15. M6 x 25mm Thread Rolling Screw x 6 |
| 4. Tweeter Plate D2 x 1 | 10. Bracket "P" x 1 | 16. #7 x 1.25 Speaker Screws (only for unloaded pods) x 8 |
| 5. Blank Plate P1 x 1 | 11. Bracket "PP" x 1 | |
| 6. Tweeter Plate P2 x 1 | 12. Bracket "PPP" x 1 | |

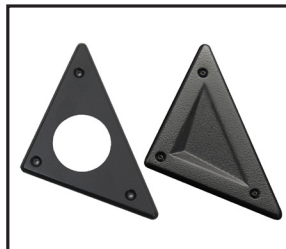
PARTS LIST IMAGES



1-2. Driver & Passenger Side Kickpods x1



3-4. Blank & Tweeter Plate D1/D2 x1



5-6. Blank & Tweeter Plate P1/P2 x1



7. Bracket "D" x1



8. Bracket "DD" x1



9. Bracket "DDD" x1



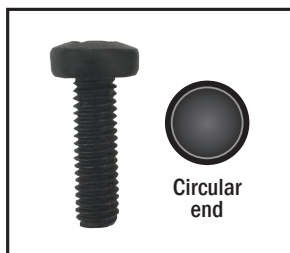
10. Bracket "P" x1



11. Bracket "PP" x1



12. Bracket "PPP" x1



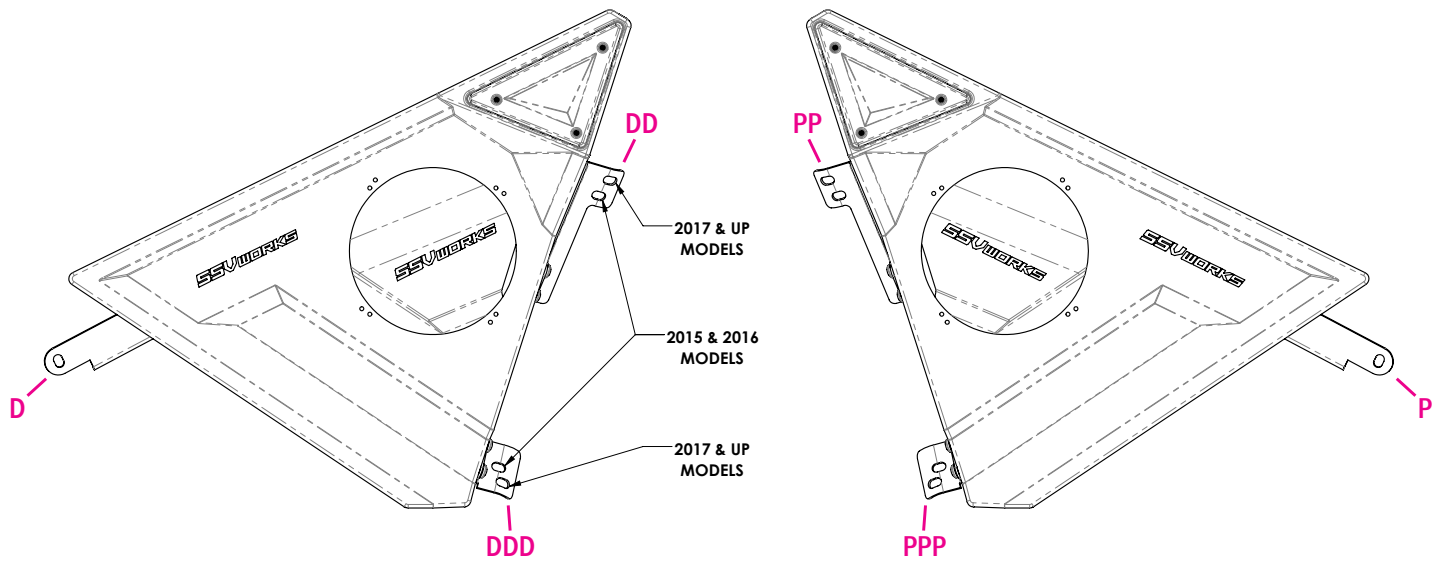
13. M6 x 16mm Screw x12 (for brackets)



14. M6 Washer x18

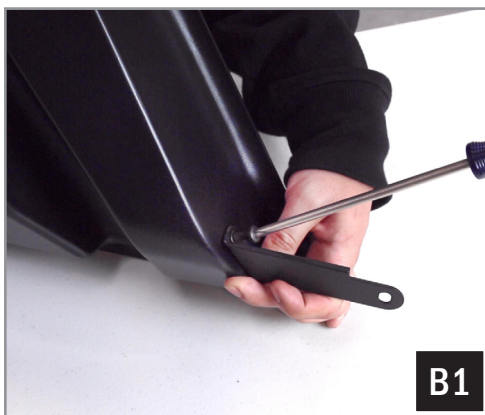
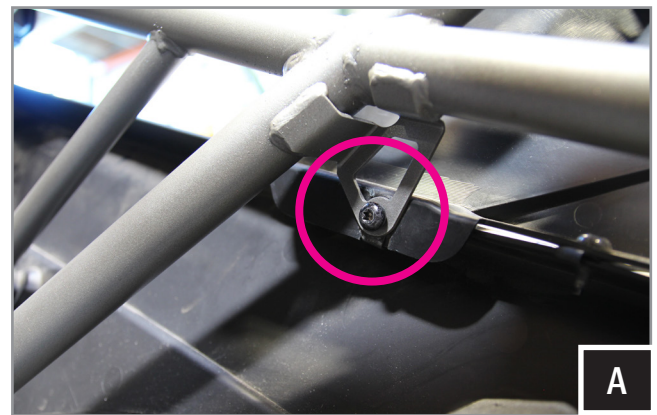


15. M6 x 25mm Thread Rolling Screw x6 (for car)

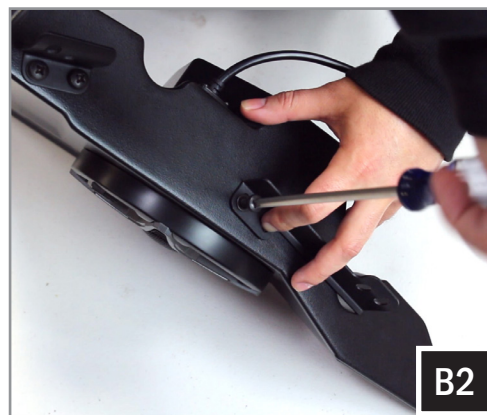


A. To remove the factory speaker enclosures use a T40 torx socket to extract the (3) screws securing each speaker enclosure. Disconnect the factory connector and remove the speaker enclosure.

If your vehicle did not come with a factory speaker you will need to remove (1) T40 torx screw on both driver and passenger side of the vehicle. The screw secures the vehicle factory plastic side panel to a bracket welded to the chassis tube. See figure A.



D/P= Fully Tighten



DD/PP= Loosely Assemble Bracket



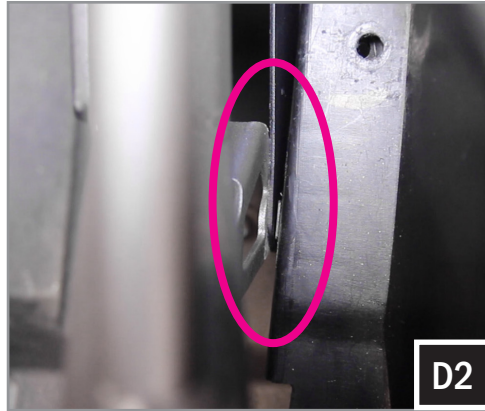
DDD/PPP= Fully Tighten

B. Start by assembling D, DD, and DDD brackets to drivers side kick pod using (2) M6 Washer and (2) M6 Screw per bracket.

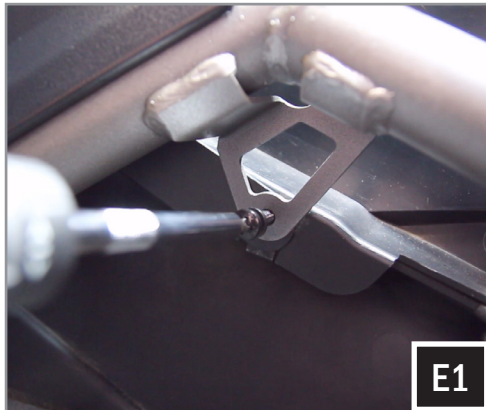
Bracket DD will need to remain loosely hand tighten during this step. Fully tighten bracket D and DDD.

Repeat for passenger side kick pod.

C. Installing the passenger kick pod will require the temporary removal of the factory glovebox. Open the glovebox door and release the tabs that are located at the back of the compartment. Lift and remove the glovebox.



D. Place the Passenger kickpod into the vehicle pushing it as far forward as possible. This will allow you to angle in the rear of the kickpod so that bracket "P" is able to rest in between the factory metal bracket and plastic side panel as shown in Figure D2. Once the bracket is resting between both surfaces tilt the front of the kick pod into position.



Bracket P



Bracket PPP



Bracket PP

E. Next tighten the brackets to the vehicle in the following order using (3) M6 Thread Rolling Screws and (3) M6 washers:

1. Bracket P
2. Bracket PPP
3. Position Bracket PP so that the mounting hole properly lines up with the vehicles chassis tube. Once aligned tighten bracket to Kickpod.
4. Tighten bracket PP to chasis tube using M6 thread rolling screw.

F. Re-Install Glovebox.

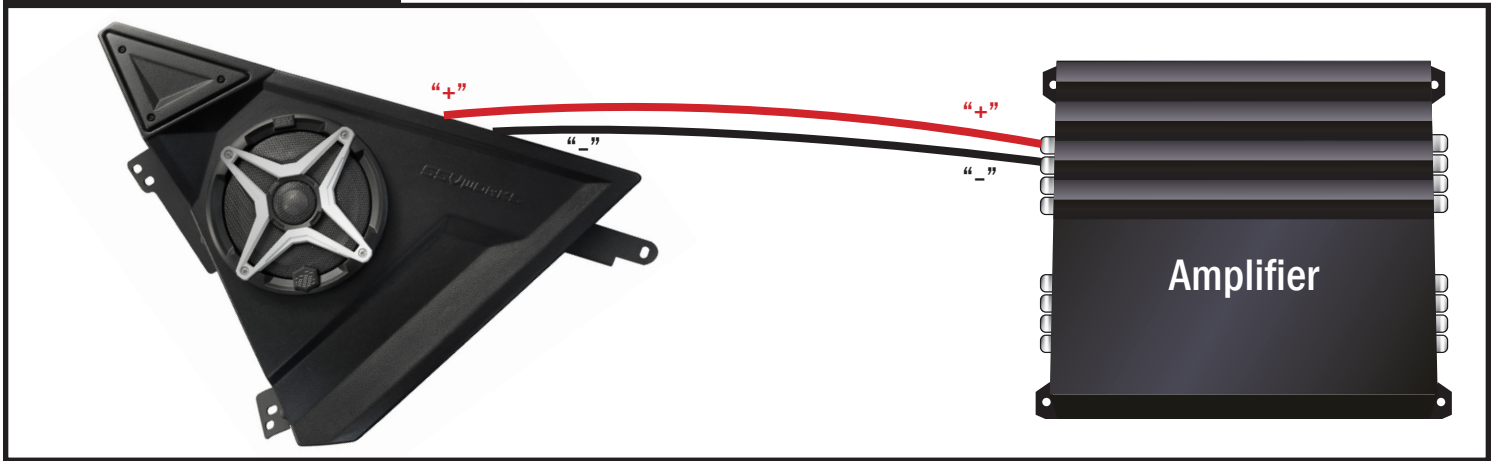
G. Before installing drivers side kickpod, start by tilting the steering wheel to its highest position.

H. Repeat steps A-E to install the drivers side kick speaker pod

USING A SSV WORKS HARNESS

Connecting the SS-F65 using the pre-installed, two-pin connector will require an optional SSV Works harness (WP-H1149). If you are not using the SS-F65 plug-&-play harness, simply cut off the two-pin connector and follow the wiring instruction below.

WIRING INSTRUCTIONS



For proper sound, ensure the speaker polarity is correct connect the "+" to the "+" and the "-" to the "-" from the speaker wire to the amplifier. If using with an SSV Works complete system refer to the amplifier wiring instructions for more detailed wiring information.

USING COMPONENT SPEAKERS

If you choose to use component speakers, simply remove the Blank plate on the pod and install the Tweeter plate.



SS-F65