



SSV WORKS, 201 N. Rice Ave Unit A, Oxnard, CA 93030  
 www.SSVworks.com | Phone: 818-991-1778 | Fax: 866-293-6751

# RZ4-GB10

## RZR Turbo S & RZR XP1000 2014+ Glove Box Subwoofer Enclosure

### WARRANTY INFORMATION:

All SSV Works enclosures are covered by a limited lifetime warranty against defects in material or workmanship. All SSV Works Electronics are covered by a limited 1 year warranty against defects in material or workmanship. All SSV Works Speakers are covered by a limited 1 year warranty against defects in material or workmanship. All Kicker Speakers are covered by a limited 1 year warranty against defects in material or workmanship. Labor for replacement of defective components is not covered. Contact SSV Works for further warranty information.



Please read and understand these instructions completely before installation to avoid possible injury, or damage to the accessory or vehicle.

### TOOLS NEEDED FOR INSTALLATION

- |                       |                           |                           |
|-----------------------|---------------------------|---------------------------|
| - 10mm & 8mm Socket   | - T-30 & T-40 Torx Driver | - #2 Phillips Screwdriver |
| - Ratchet & Extension | - #3 Phillips Screwdriver | - Panel removal tool      |

### PARTS LIST IMAGES



1. WP-RZ4GBS10 Enclosure  
(door not included)



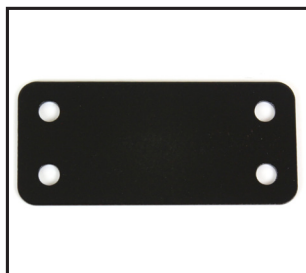
2. 8mm Socket Head Screws & Washers x14



3. Glove Box Door Bracket



4. Lower Mounting Bracket  
with #14 Screw x1 each



5. Flat Mounting Bracket "A"



6. Mounting Bracket "B"



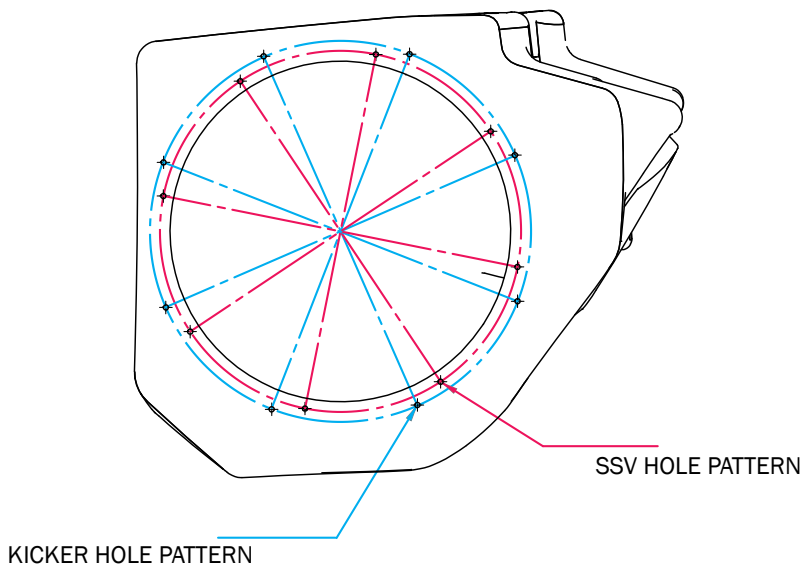
7. Left & Right Door Hinge  
Brackets



8. M6 x 8mm (T30 torx) Screw  
x2

### INSTALLATION NOTES

The use of a thread locker is recommended on all screws to prevent loosening due to vibration. If the vehicle has SSV Works front kick panels (RZ4-F65/RZ3-F65) installed, the passenger side kick panel will need to be removed prior to installation of the RZ4-GB10.

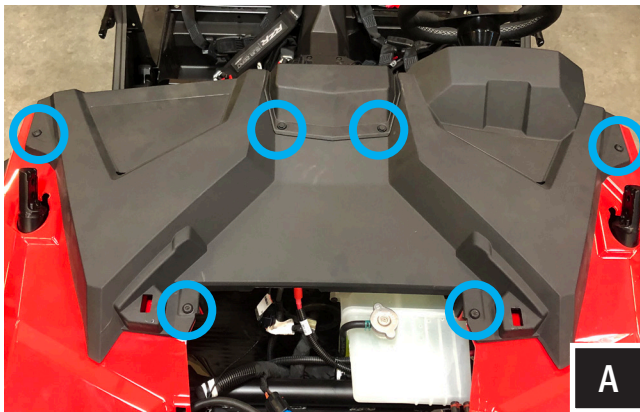


**FOR UNLOADED ENCLOSURES:**

Pink hole pattern: SSV Works Subwoofer

Blue hole pattern: Kicker Subwoofer

If using a different brand subwoofer, first see if the subwoofer holes line up with either one of the pre-drilled hole patterns. If not, make sure to drill new holes away from the pre-drilled holes.



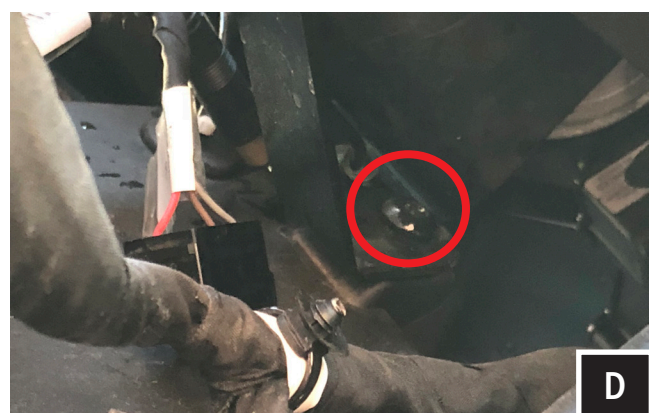
A. Turn the hood locks, remove the hood. Extract the (4) T40 torx screws and extract the (2) push pins from the dash. From inside the machine, pull dash towards you and lift to unclip. Once unclipped remove the dash cap.



B. Extract the (4) T40 screws surrounding the ride command system and (2) push pins found in the dash pocket. \*for non-ride command vehicles, less hardware may need to be removed for this step.



C. Unclip the dash surrounding the glovebox. Once unclipped, gently pull the dash forward and remove the upper dash pocket.

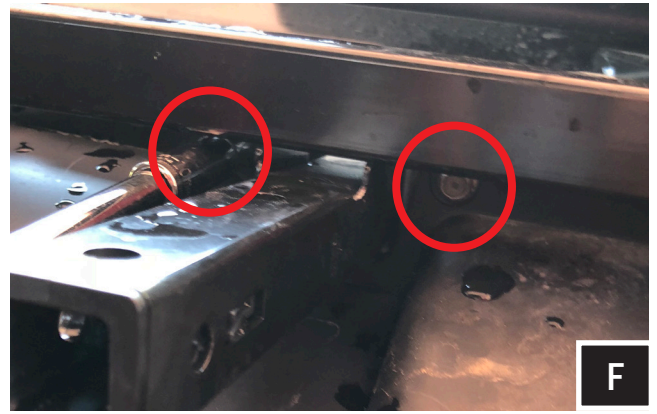


D. Extract the (1) T40 torx that secures the lower dash pocket



E. Disconnect the USB and unclip the LED from the lower dash pocket. Remove the lower dash pocket.

Label / take photos of the harnesses connected to the dash. Once recorded, disconnect harnesses, and remove dash.



F. With the dash removed, extract the (2) 10mm bolts retaining the glovebox and remove the glovebox.

## ENCLOSURE ASSEMBLY



G. Install door latch onto enclosure with the provided (2) T30 M6x8mm screws.



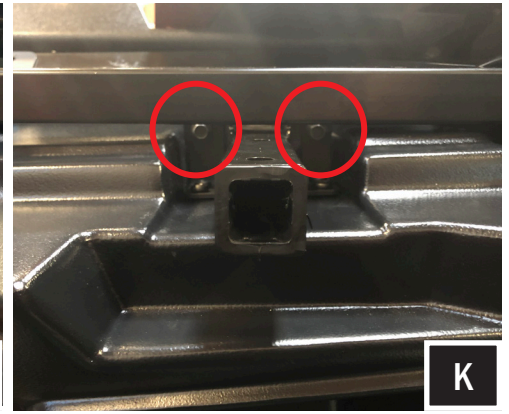
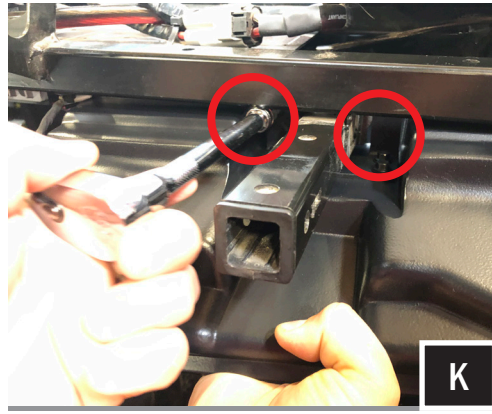
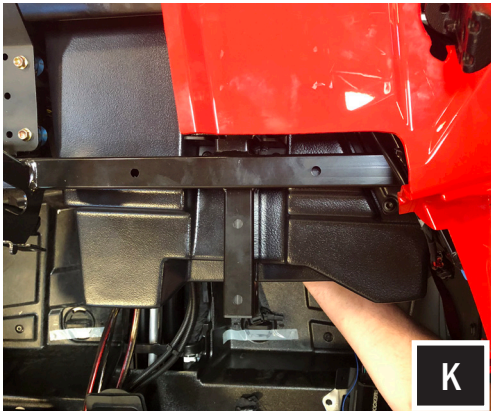
H. Using (4) 8mm screws and washers, attach Bracket "B" to the enclosure.



I. Install left and right door hinge brackets using (2) 8mm screws and washers for each side.



J. Install lower mounting bracket onto enclosure with the provided (2) 8mm screws and washers.



K. Lift the enclosure into place. Using the factory glove box mounting hardware, fasten the enclosure into place.



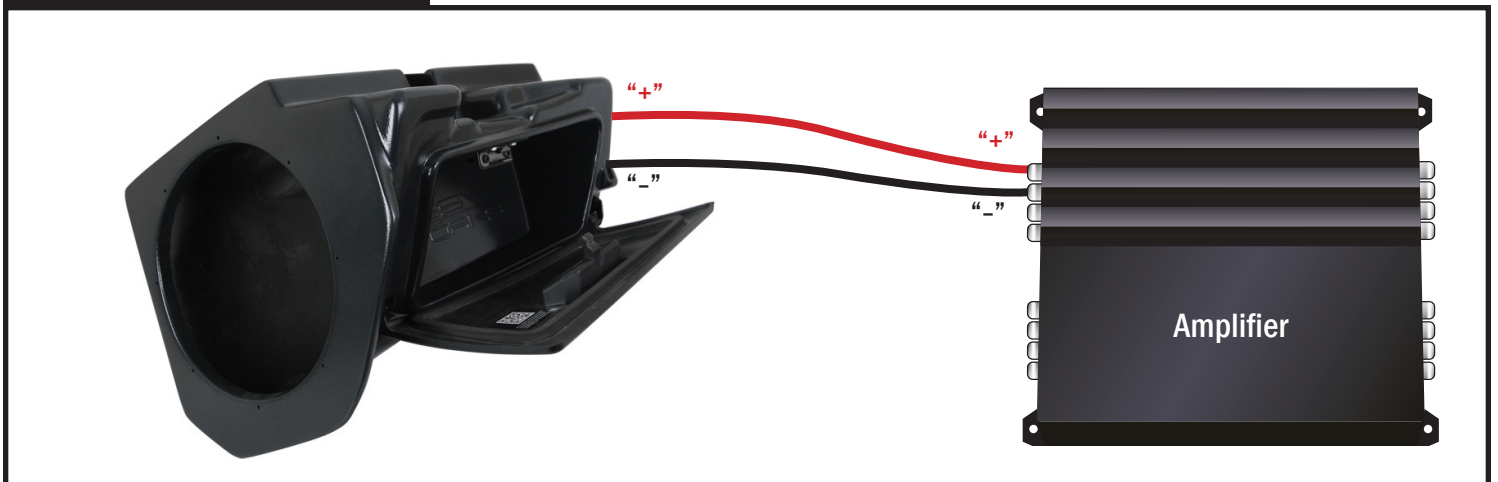
L. Place Bracket "A" into place towards the firewall, and fasten it into place with the (4) 8mm socket head screws and washers provided with the kit.



M. Fasten the provided #14 screw to secure the enclosure lower mounting bracket.

N. Route the speaker wire away from any moving parts and any sharp metal, then connect to the amplifier. Attach the factory glovebox door and reattach all factory panels.

## WIRING INSTRUCTIONS



For proper sound, ensure the speaker polarity is correct connect the "+" to the "+" and the "-" to the "-" from the speaker wire to the amplifier. If using with an SSV Works complete system refer to the amplifier wiring instructions for more detailed wiring information.



RZ4-GB10