



SSV WORKS, 201 N. Rice Ave Unit A, Oxnard, CA 93030
www.SSVworks.com | Phone: 818-991-1778 | Fax: 866-293-6751

RZ4-C2ARC

Polaris RZR XP Turbo S Cage Mounted 2-Speaker Kit

WARRANTY INFORMATION:

All SSV Works enclosures are covered by a limited lifetime warranty against defects in material or workmanship. All SSV Works Electronics are covered by a limited 1 year warranty against defects in material or workmanship. All Kicker Speakers are covered by a limited 1 year warranty against defects in material or workmanship. All Kicker Amplifiers are covered by a limited 2 year warranty against defects in material or workmanship. Labor for replacement of defective components is not covered. Contact SSV Works for further warranty information.



Please read and understand these instructions completely before installation to avoid possible injury, or damage to the accessory or vehicle.

TOOLS NEEDED FOR INSTALLATION

- | | | | | |
|---|--------------------------------|---|------------------|--------------------|
| - T30 & T40 Torx Socket | - 4mm & 5mm Allen Wrench | - Drill with 13/64", 1/8", 1/4" & 1/2" Drill bits | - Wire Crimpers | - Scribe or Marker |
| - 10mm and 5.5mm Socket & Ratchet or Wrench | - #2 & #3 Phillips Screwdriver | - Panel removal tool | - Wire Strippers | - Utility Knife |

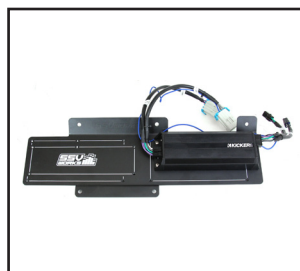
PARTS LIST IMAGES



1. Amp Power Wire x1



2. Rear B-H1151 Speaker Expansion



3. Amp Tray with pre-loaded Kicker Amplifier



4. Amp Tray Base Bracket



5. M6 x 1.0 Screws and Washers x 2



6. Self-Tapping Screw x 1



7. Zip Ties x 10



8. Fuse Holder with 40A Fuse x1



9. Battery Terminal Cable x1

PANELS AND DASH DISASSEMBLY



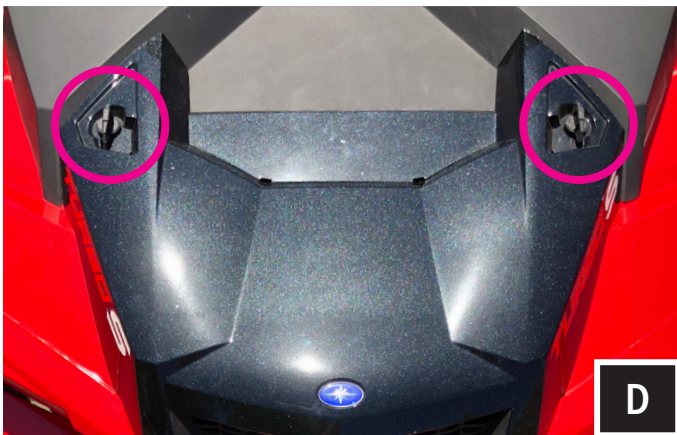
A. Remove seats by releasing the handle behind each seat, push forward slightly while lifting up



B. Disconnect the negative battery cable from the battery.



C. Remove all of the center console push pins and T-40 Torx screws. For 4-seat models, disconnect the harness attached to the 12v accessory socket.



D. Remove hood by turning locking pins and lifting up.



E. Unscrew the (4) T40 torx screws (showing driver side only in image) and extract the (2) push pins from the dash. From inside the machine, pull dash towards you to unclip. Once unclipped remove the dash.

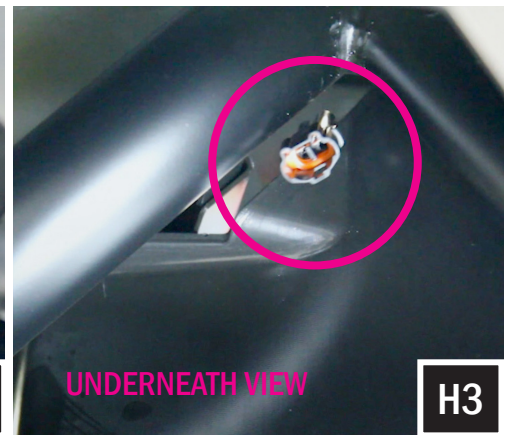
RUNNING WIRING AND CABLES



F. Unwrap the tape and pull the rubber wire grommet out of the firewall.

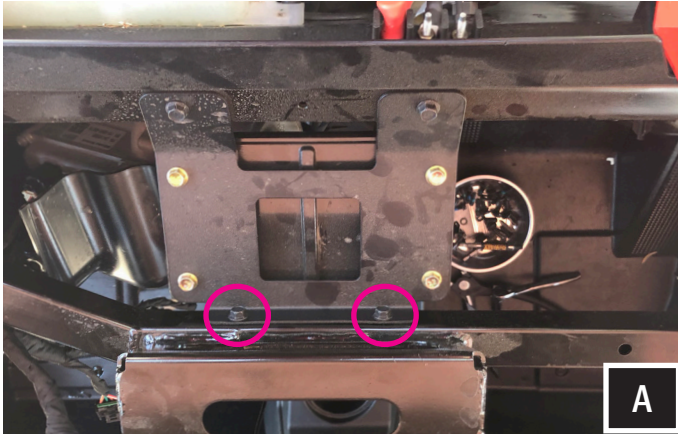


D. G1. From the hood compartment, feed the connector end of the amp power wire through the firewall grommet. G2. Feed ring terminal end of harness down hood compartment side of the firewall along the factory wiring harnesses. G3. Pull remaining length of amp power wire through to center console and route wire to the battery. Do the same for the B-H1151 rear speaker harness.

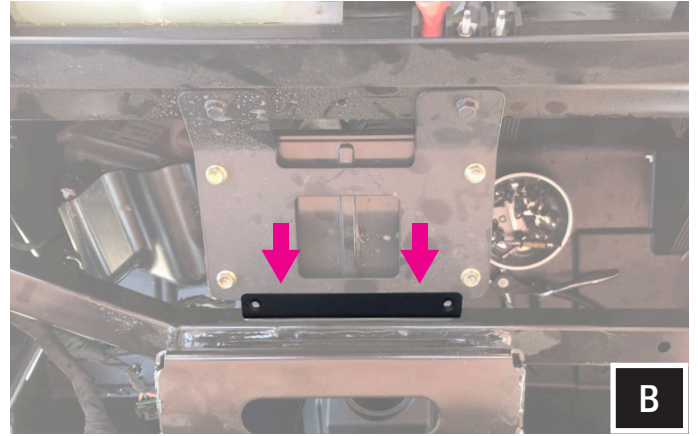


H. Route the front speaker wire through the opening where the firewall and roll cage bar meet on both the driver and passenger side. Leave these wires loose until the front speaker pods are to be installed. The purpose of this purpose of this harness is to add RZ4-F65 front speakers- sold separately.

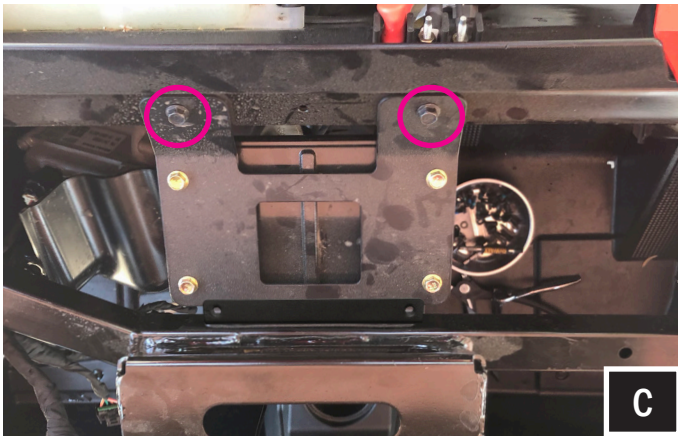
AMP TRAY INSTALLATION



A. Remove the (2) 10mm bolts circled in pink



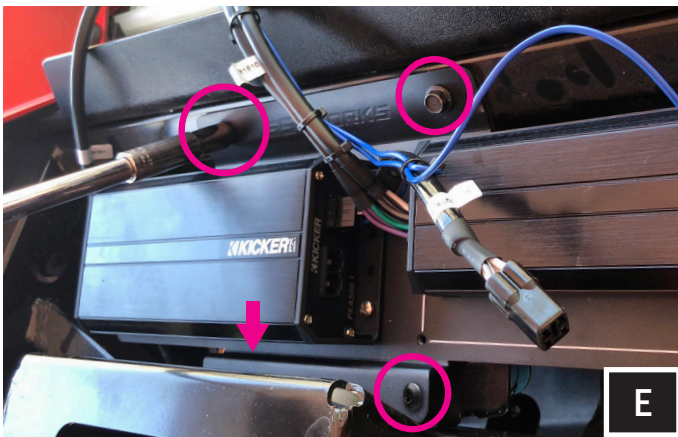
B. Place the amp tray base bracket at the location of the (2) removed factory 10mm bolts. Re-fasten the bolts through both the amp tray base bracket and factory plate to secure to the chassis.



C. Remove the (2) 10mm bolts circled in pink



D. Place the amp tray into the mounting location by lining up the amp plate screw holes to the factory holes on the chassis.



E. Secure the amp tray by using the two (2) factory bolts at the top, and two (2) M6 bolts at the bottom mounting locations.

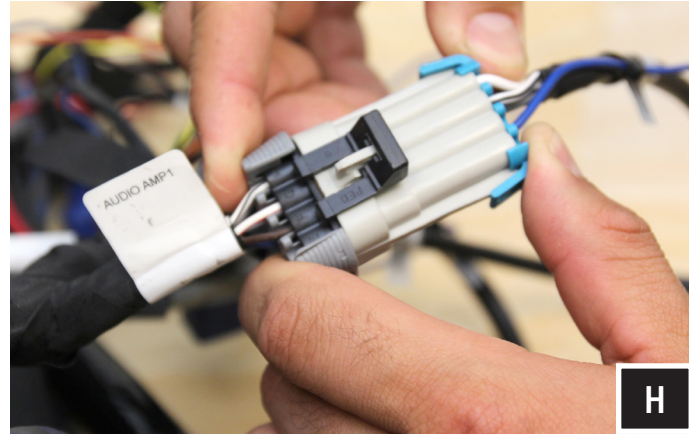


F. Using a scribe or punch, mark the location of the needed pilot hole on the passenger side of the tray.

AMP TRAY INSTALLATION



G. With the correct location marked, uninstall the amp tray and use a 13/64" drill bit to drill your pilot hole. With your pilot hole drilled, reinstall the amp tray. Use the self-tapping screw in the drilled hole location.



H. Connect the amplifier "Front Input" to the Ride Command "Audio Amp 1" factory harness. Connect the amplifier "Rear Input" for rear speakers to "Audio Amp 2" factory harness.



SSV WORKS, 201 N. Rice Ave Unit A, Oxnard, CA 93030
www.SSVworks.com | Phone: 818-991-1778 | Fax: 866-293-6751

Universal Cage Mount Kicker 6.5" Speaker Enclosures

WARRANTY INFORMATION:

All SSV Works enclosures are covered by a limited lifetime warranty against defects in material or workmanship. All SSV Works Electronics are covered by a limited 1 year warranty against defects in material or workmanship. All Kicker Speakers are covered by a limited 1 year warranty against defects in material or workmanship. All Kicker Amplifiers are covered by a limited 2 year warranty against defects in material or workmanship. Labor for replacement of defective components is not covered. Contact SSV Works for further warranty information.

TOOLS NEEDED FOR INSTALLATION

- 3mm & 5mm Allen Key - 8mm Open End Wrench



Please read and understand these instructions completely before installation to avoid possible injury, or damage to the accessory or vehicle.

Placement of the pod depends on what type of roll cage you have (factory or aftermarket) and your preference of where you want the pods to be installed. In these instructions, we have installed them on the outside vertical bars at the back of the roll cage.

PARTS LIST IMAGES



1. US-C65 Enclosures (1 pair)



2. Dual Mounting Ring Adapter x 2



3. Ring Clamp x 4



4. Rear B-H1150 Speaker Harness



5. M6 Hex Head Bolts & Washers x4



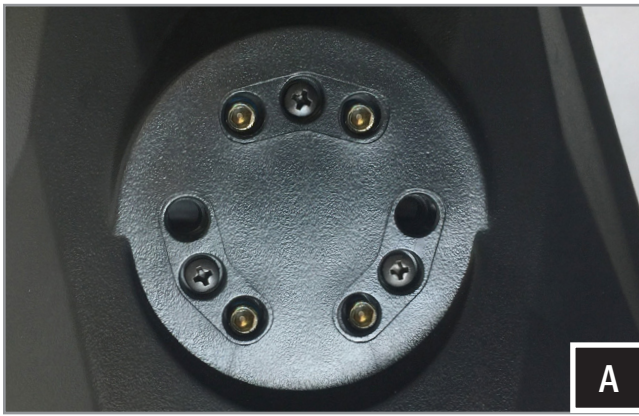
6. M6 Allen Socket Head Bolts & Washers x4



7. M6 Set Screws x 4

INSTALLATION NOTES

It is recommended to wrap the bag that the clamps come in around the cage before you slide the clamp onto the cage to prevent scratching.



A. Find the best orientation for the speaker on your bar and screw in the Set Screws in the OPPOSITE holes of where the clamp will install into.



B. Loosely install the clamp base to the cage mount pod with the two (2) M6 hex head bolts and washers, place the cage mount pod in the desired mounting location on the vehicle. Once the ring adapter is in the desired position, tighten the two (2) bolts using a 8mm open wrench.

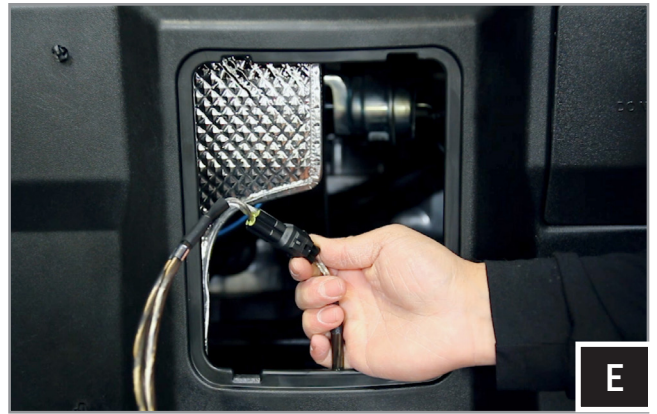


C. Place both ring mounting clamps on the cage using the plastic bag to prevent scratching, place the cage mount pod in its final mounting location and secure to the clamps using the two (2) M6 allen socket head bolts and washers with a 5mm allen key.

PLACEMENT OF THE POD DEPENDS ON WHAT TYPE OF ROLL CAGE YOU HAVE (FACTORY OR AFTERMARKET) AND YOUR PREFERENCE OF WHERE YOU WANT THE PODS TO BE INSTALLED. IN THESE INSTRUCTIONS, WE HAVE INSTALLED THEM ON THE OUTSIDE VERTICAL BARS AT THE BACK OF THE ROLL CAGE.



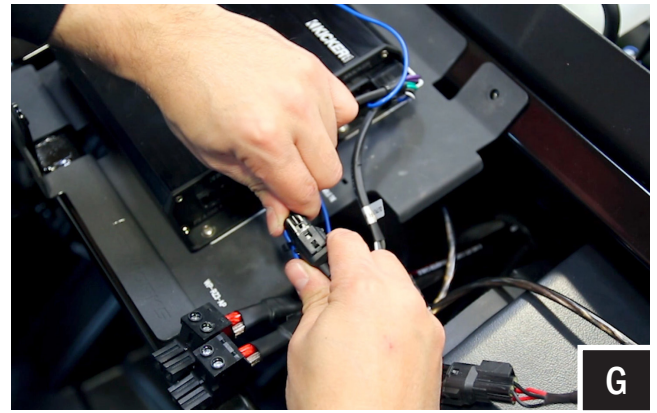
D. Position the speaker to your liking and tighten the hex head bolts by hand with a 8mm wrench.



E. From the rear of the center console, route the B-H1150 harness up to each speaker pod and connect.

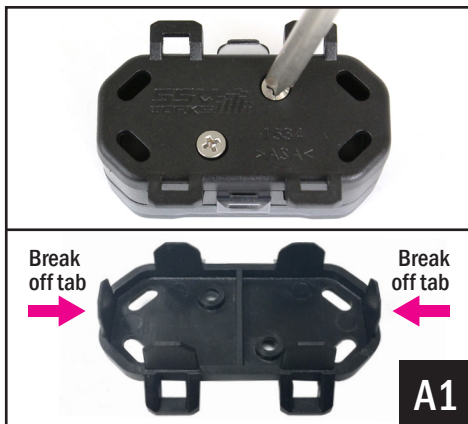


F. Route the speaker wire away from any moving parts and any sharp metal, then connect to the amplifier

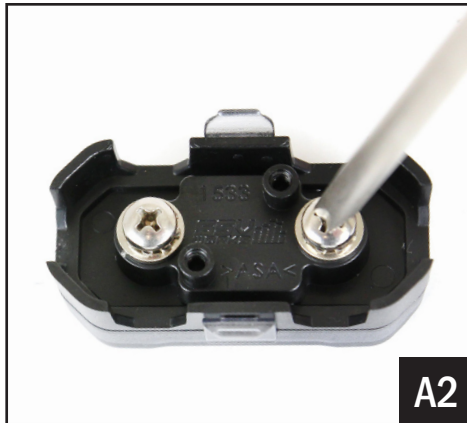


G. Connect the B-H1151 speaker harness to the rear output of the amplifier.

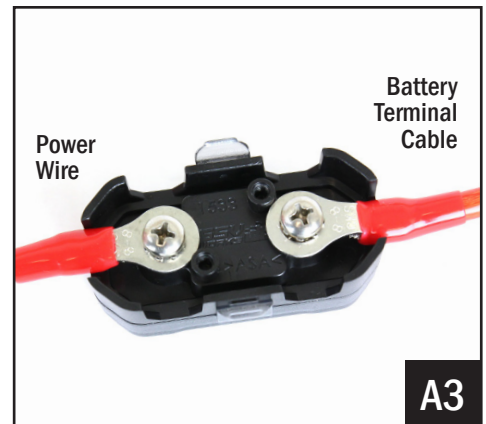
CONNECTING POWER & GROUND CABLE TO BATTERY



A1. Remove the bottom cover of the fuse holder by extracting the 2 screws. Break off the right and left side tabs on the bottom cover.



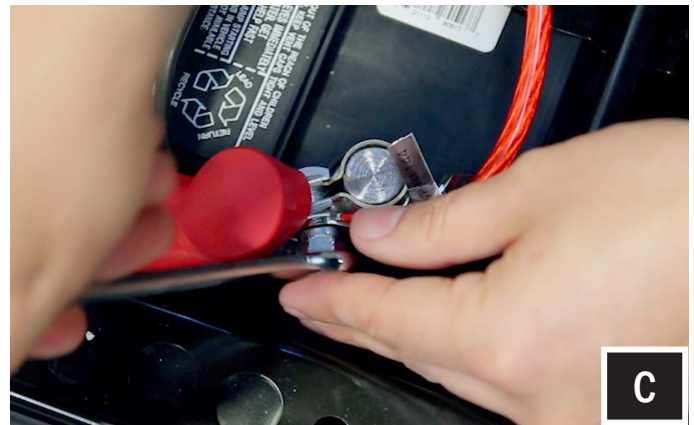
A2. Extract both fuse holder screws.



A3. Attach both the Power Wire and Battery Terminal Cable to the fuse holder. Reattach the bottom cover.



B. Unscrew the factory nut on the negative battery terminal. Install the 2 ground cables to the screw on the ground battery terminal. Re-install the factory nut.



C. Unscrew the factory nut on the positive battery terminal. Install the 2 power cables to the screw on the positive battery terminal. Re-install the factory nut.



D. Remove the top of the fuse holder and extract the 2 screws. Insert the 40A fuse, screw the 2 screws back in and reattach the fuse holder top.



E. Zip tie all of the electrical cabling (factory and audio) along the center column away from the drive shaft.

**THIS CONCLUDES THE INSTALLATION PROCESS. REPLACE THE FACTORY PANELS AND SEATS.
QUESTIONS? PLEASE CONTACT SSV WORKS AT 818-991-1778 OR EMAIL SUPPORT@SSVWORKS.COM**