



SSV WORKS, 201 N. Rice Ave Unit A, Oxnard, CA 93030
www.SSVworks.com | Phone: 818-991-1778 | Fax: 866-293-6751

RG4-F65

Polaris Ranger

6.5" Speaker Front Kick Panels

WARRANTY INFORMATION:

All SSV Works enclosures are covered by a limited lifetime warranty against defects in material or workmanship. All SSV Works Electronics are covered by a limited 1 year warranty against defects in material or workmanship. All SSV Works Speakers are covered by a limited 1 year warranty against defects in material or workmanship. Labor for replacement of defective components is not covered. Contact SSV Works for further warranty information.



Please read and understand these instructions completely before installation to avoid possible injury, or damage to the accessory or vehicle.

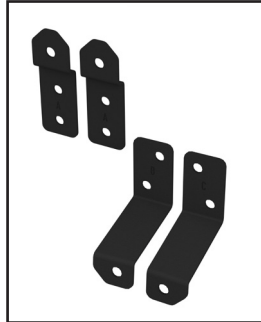
TOOLS NEEDED FOR INSTALLATION

- T-30 Torx Driver - Panel Removal Tool - Phillips Screwdriver

PARTS LIST IMAGES



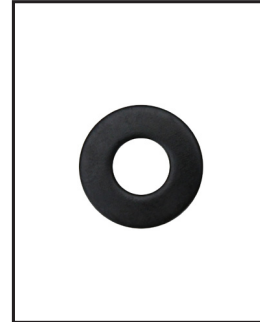
1. RG4-F65 Enclosures (1 pair)



2. Enclosure Brackets x 4



3. M6 x 16mm Screws x 10



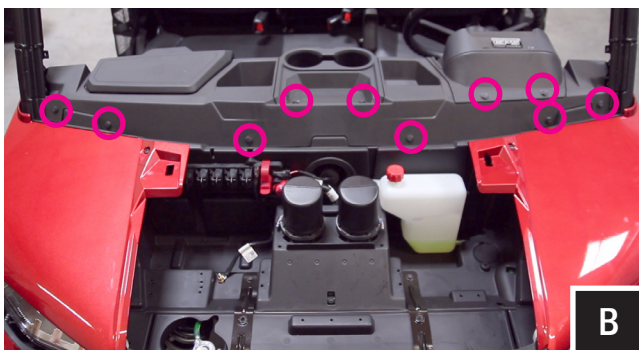
4. M6 Washers x 8 (small)



4. M6 Washers x 2 (large)



A. Remove hood by turning locking pins and lifting up.

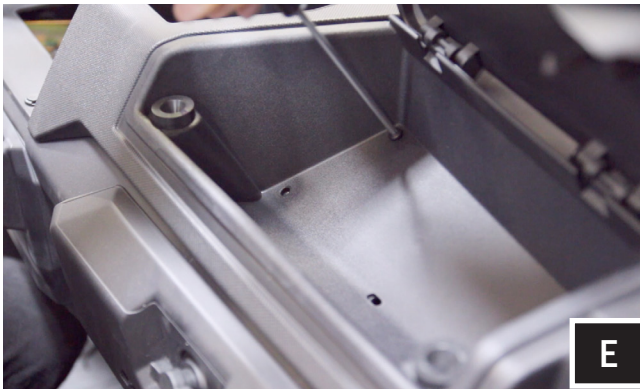


B. Use a panel tool to extract push pins circled in pink.



C. With push pins extracted, lift to remove the cup holder and gauge cluster.





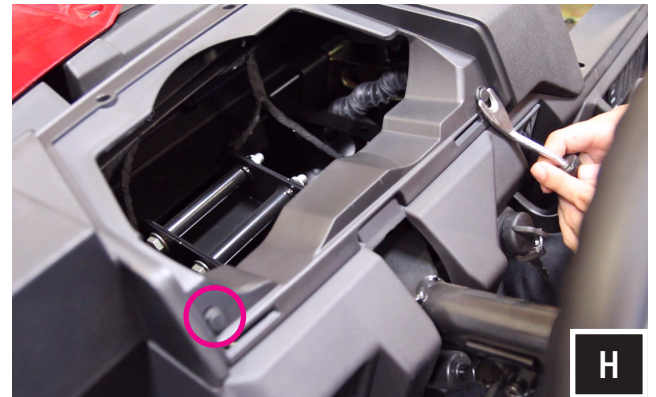
E. Unscrew (4) torx screws located in upper glove box and remove box.



F. Extract push pins that are now exposed from removing the upper glove box.



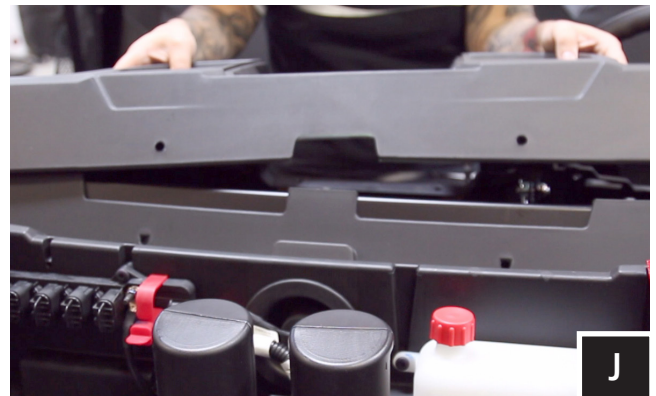
G. Extract push pins exposed from cup holder removal.



H. Extract push pins exposed from gauge cluster removal.



I. Extract push pins located above driver and passenger side cup holders.



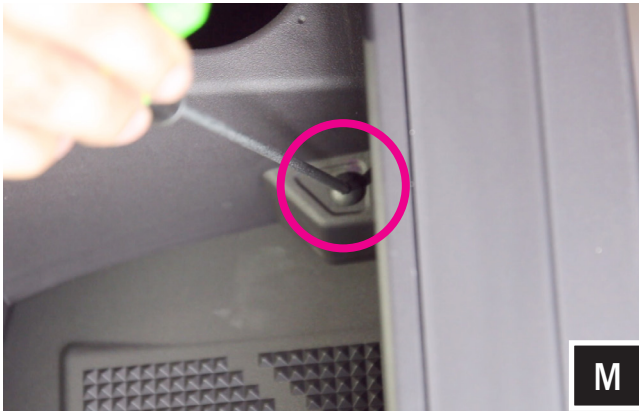
J. Lift to remove the dash.



K. Using the supplied M6 screws and small washers, install the brackets to kick pods.



L. Remove factory T40 torx screws located from the front of the dash next to the cup holders.



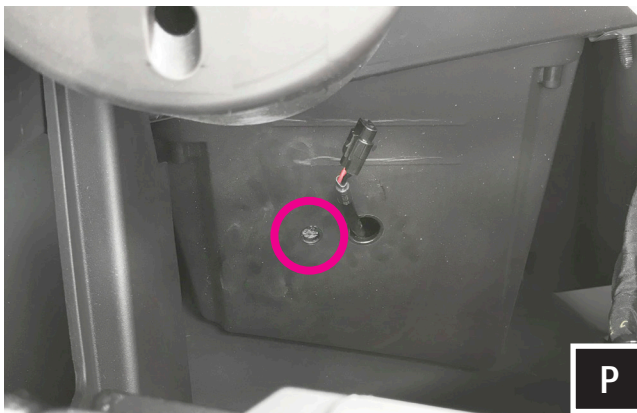
M. Remove factory T25 torx screws located underneath the dash.



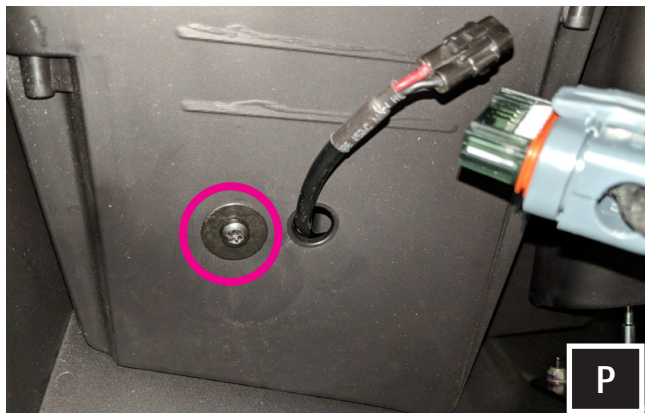
N. Located on the inside top of the pocket you will have two holes, route speaker wire through the larger hole. The smaller hole will be used to mount the pod in Step P.



O. Place the speaker pod in location and resecure the factory screws through the pod brackets on the front and underneath the dash.



P. From the inside-top of the dash, secure the top mounting M6 screw and large washer to the pod through the smaller hole next to the routed speaker wire.



Connecting the RG4-F65 using the pre-installed, two-pin connector will require an optional SSV Works plug-&-play harness (WP-H1149 - sold separately). If you are not using the WP-H1149 harness, simply cut off the two-pin connector and follow the wiring instruction.

Repeat for the other side.

WIRING INSTRUCTIONS

For proper sound, ensure the speaker polarity is correct connect the "+" to the "+" and the "-" to the "-" from the speaker wire to the amplifier. If using with an SSV Works complete system refer to the amplifier wiring instructions for more detailed wiring information.

