



SSV WORKS, 201 N. Rice Ave Unit A, Oxnard, CA 93030
www.SSVworks.com | Phone: 818-991-1778 | Fax: 866-293-6751

MT-F65

Can-Am Maverick Trail/Sport

Kick Panel Speaker Pods

WARRANTY INFORMATION:

All SSV Works enclosures are covered by a limited lifetime warranty against defects in material or workmanship. All SSV Works Electronics are covered by a limited 1 year warranty against defects in material or workmanship. All SSV Works Speakers are covered by a limited 1 year warranty against defects in material or workmanship. Labor for replacement of defective components is not covered. Contact SSV Works for further warranty information.



Please read and understand these instructions completely before installation to avoid possible injury, or damage to the accessory or vehicle.

TOOLS NEEDED FOR INSTALLATION

- T-30 Torx Driver
- 10mm Wrench
- Drill
- 1/4" & 1/8" Drill Bit
- Scribe
- Panel Removal Tool

PARTS LIST IMAGES



1. MT-F65 Enclosures x2



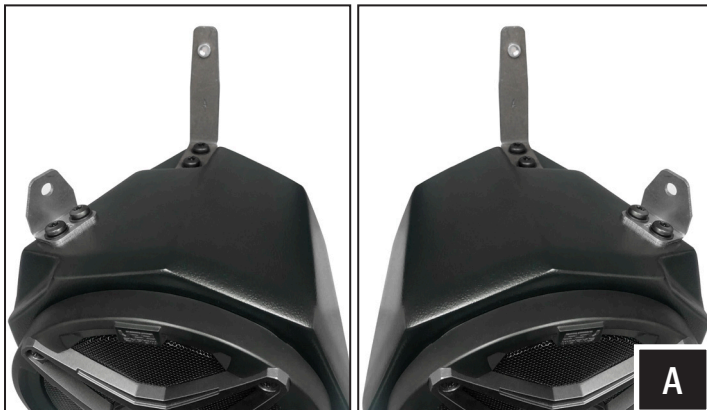
2. Enclosure Brackets x2



3. M6 x 16mm Screws x8 and Washers x10

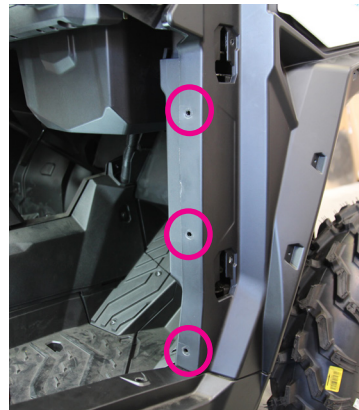


4. M6 x 25mm Screw and Locking Nut x2

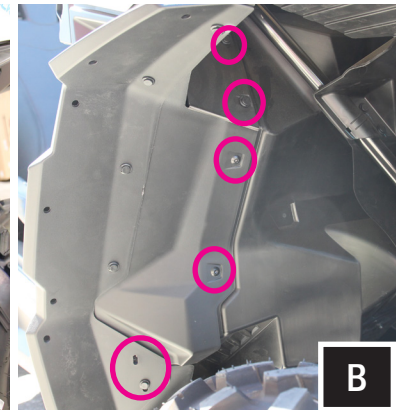


A. Install the enclosure brackets using two (2) M6 screws per bracket.

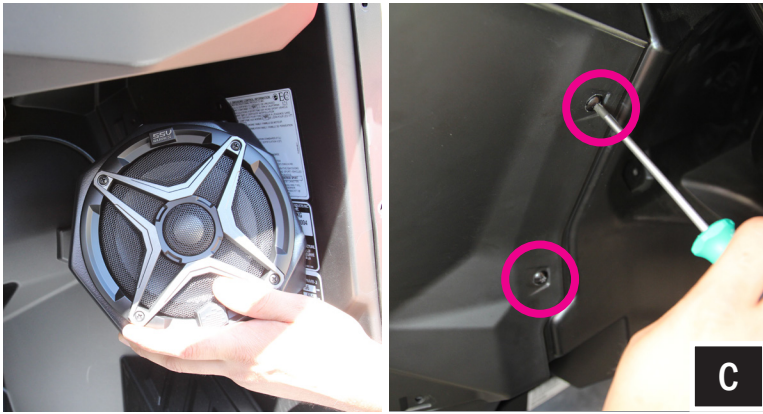
DOOR JAM SIDE VIEW



INSIDE FRONT FENDER VIEW



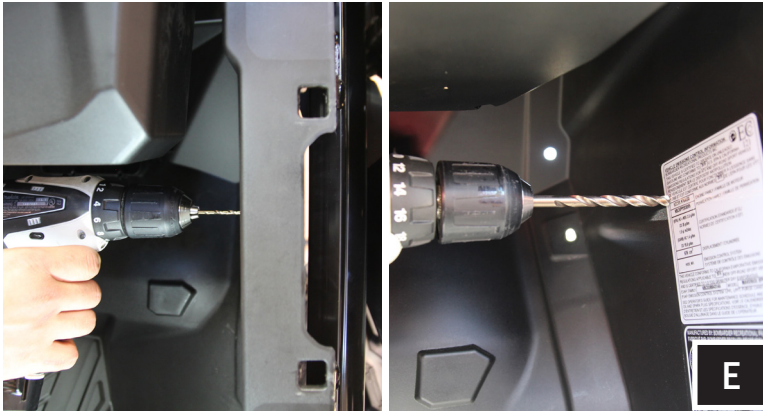
B. Remove T30 torx screws and push pins securing the fender flare to the body of the machine.



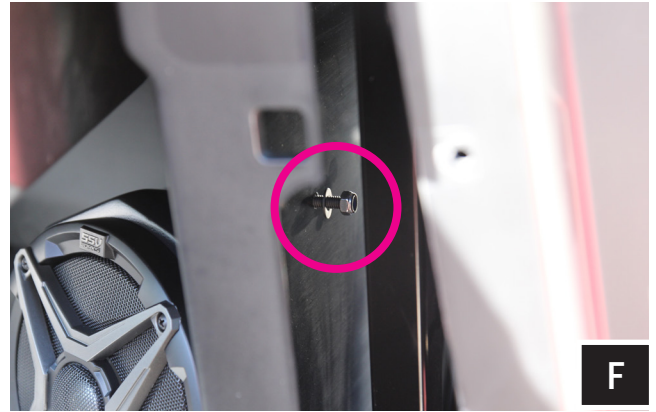
C. Put the pod in place and fasten the two (2) factory screws from the back side through the wheel well to secure the pod.



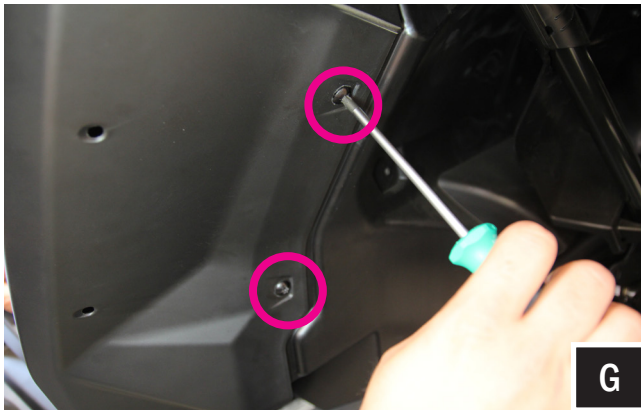
D. While holding the pod in place, use a scribe to mark a drill point for the pilot hole.



E. With the pod removed, use a 1/8" drill bit to drill a pilot hole. Then use a 1/4" drill bit for the mounting screw.



F. Pull away the fender to gain access to install the hardware. Place the pod back in the mounting location and loosely mount the top side of the pod FIRST using the provided T30 torx screw, 10mm nut and washer.



G. Fasten the two (2) factory screws from the back side through the wheel well to secure the pod. Then hand tighten all 3 (three) mounting screws to fully secure the pod.



H. Route the speaker wire away from any moving parts and any sharp metal, then connect to the amplifier. Repeat installation on opposite side.

Connecting the MT-F65 using the pre-installed, four-pin connector will require an optional SSV Works plug-&-play harness (WP-H1151 - sold separately). If you are not using the WP-H1151 harness, simply cut off the four-pin connector and follow the wiring instruction below.

WIRING INSTRUCTIONS

For proper sound, ensure the speaker polarity is correct connect the "+" to the "+" and the "-" to the "-" from the speaker wire to the amplifier. If using with an SSV Works complete system refer to the amplifier wiring instructions for more detailed wiring information.

