



SSV WORKS, 201 N. Rice Ave Unit A, Oxnard, CA 93030  
 www.SSVworks.com | Phone: 818-991-1778 | Fax: 866-293-6751

# MT-2A

## Can-Am Maverick Trail/Sport 2-Speaker Audio Kit

### WARRANTY INFORMATION:

All SSV Works enclosures are covered by a limited lifetime warranty against defects in material or workmanship. All SSV Works Electronics are covered by a limited 1 year warranty against defects in material or workmanship. All SSV Works Speakers are covered by a limited 1 year warranty against defects in material or workmanship. Labor for replacement of defective components is not covered. Contact SSV Works for further warranty information.

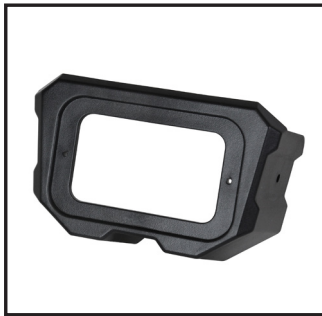


Please read and understand these instructions completely before installation to avoid possible injury, or damage to the accessory or vehicle.

### TOOLS NEEDED FOR INSTALLATION

- T-30 Torx Driver    - 10mm Wrench    - Drill    - 9/16" and 3/32" drill bit    - #2 Phillips screwdriver

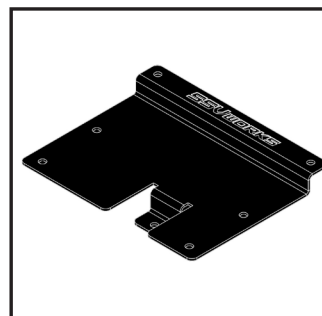
### PARTS LIST IMAGES



1. MT-DM3 Dash Panel



2. MRB3 Bluetooth Media Player and Brain



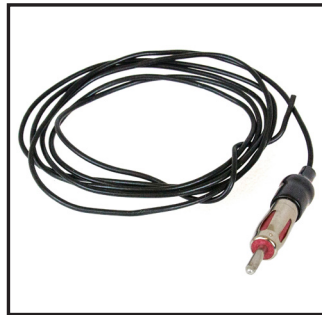
3. MRB3 Brain Tray



4. Front B-H1149 Speaker Wire



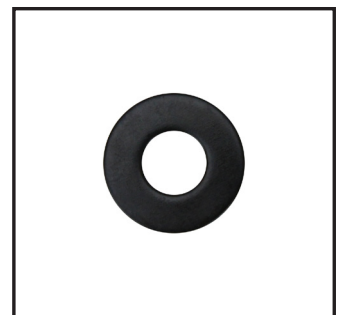
5. MRB3 Power & Ground Connector



6. Antenna



7. M6 x 16mm Screw & Nut x1



8. M6 Washer x2



9. #6x.5" Dash Mount Screws & #4x.45" MRB3 Mount Screws x2



10. MRB3 Brain Plate Mounting Screws x3



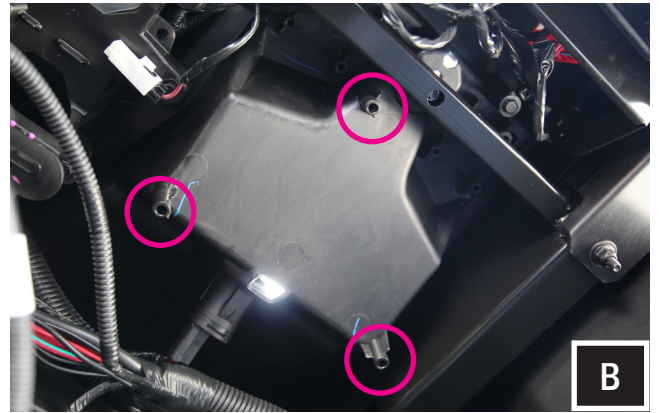
11. MRB3 Brain Mounting M5 Screws x4



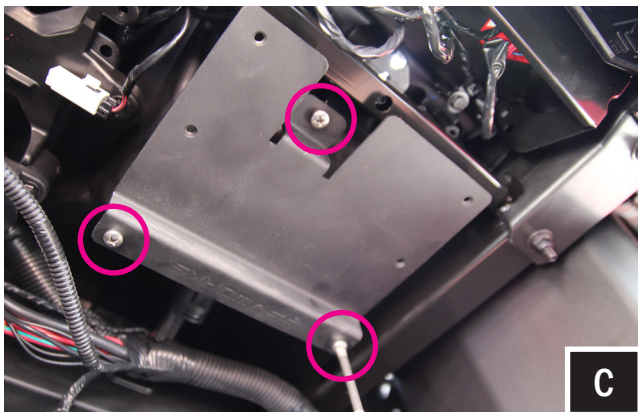
12. Zip Ties



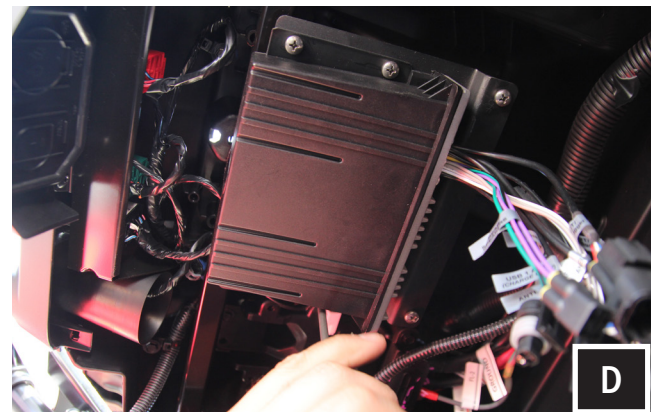
A. Route the MRB3 controller cable through the front of the DM3. Fasten the MRB3 controller with the provided screws. Do not over torque.



B. On the underside of the dash, place the MRB3 tray at this location.



C. Fasten down the MRB3 brain tray with the provided screws.



D. Place MRB3 brain onto the tray (harness facing front of vehicle). Fasten MRB3 brain to the tray with provided M5 hardware.



E. Using 9/16" drill bit, drill hole off set to the left of the dash for the MRB3 controller cable.



F. Feed controller cable through the 9/16" hole that was drilled in figure E.



F. Put the assembled DM3 in place. Using the SSV provided hardware (T30 torx screw, washers, and 10mm nut) fasten down the DM3 from the bottom. Drilling for this step is not required, the hole needed is factory.



G. Drill a pilot hole on either side of the DM3 with a 3/32" drill bit. By hand fasten down using the (2) #6x.5" screws.



SSV WORKS, 201 N. Rice Ave Unit A, Oxnard, CA 93030  
www.SSVworks.com | Phone: 818-991-1778 | Fax: 866-293-6751

# MT-F65

## Can-Am Maverick Trail/Sport Kick Panel Speaker Pods

### WARRANTY INFORMATION:

All SSV Works enclosures are covered by a limited lifetime warranty against defects in material or workmanship. All SSV Works Electronics are covered by a limited 1 year warranty against defects in material or workmanship. All SSV Works Speakers are covered by a limited 1 year warranty against defects in material or workmanship. Labor for replacement of defective components is not covered. Contact SSV Works for further warranty information.



Please read and understand these instructions completely before installation to avoid possible injury, or damage to the accessory or vehicle.

### TOOLS NEEDED FOR INSTALLATION

- T-30 Torx Driver
- 10mm Wrench
- Drill
- 1/4" & 1/8" Drill Bit
- Scribe
- Panel Removal Tool

### PARTS LIST IMAGES



1. MT-F65 Enclosures x2



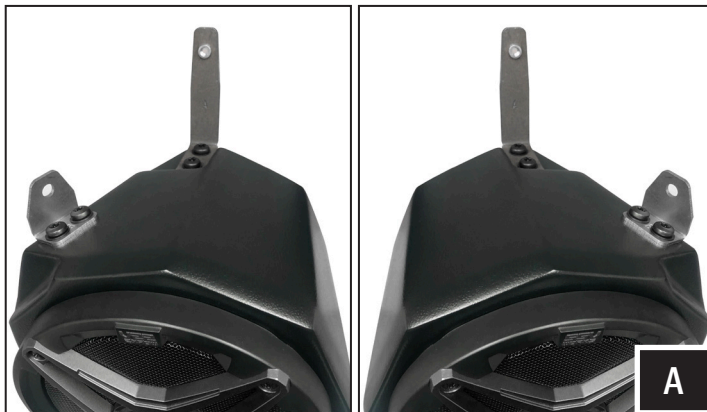
2. Enclosure Brackets x2



3. M6 x 16mm Screws x8 and Washers x10

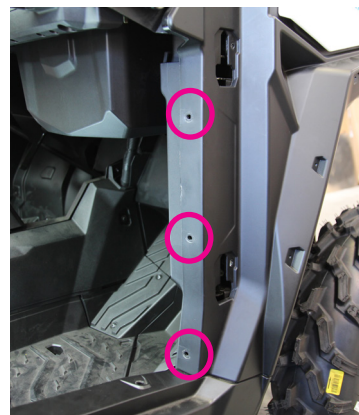


4. M6 x 25mm Screw and Locking Nut x2

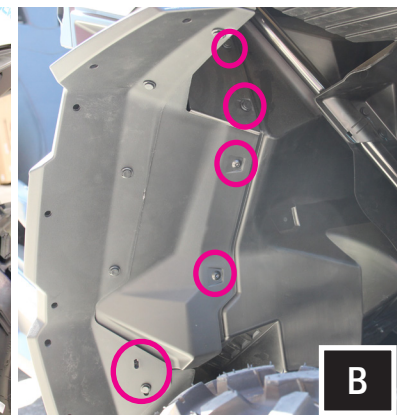


A. Install the enclosure brackets using two (2) M6 screws per bracket.

### DOOR JAM SIDE VIEW



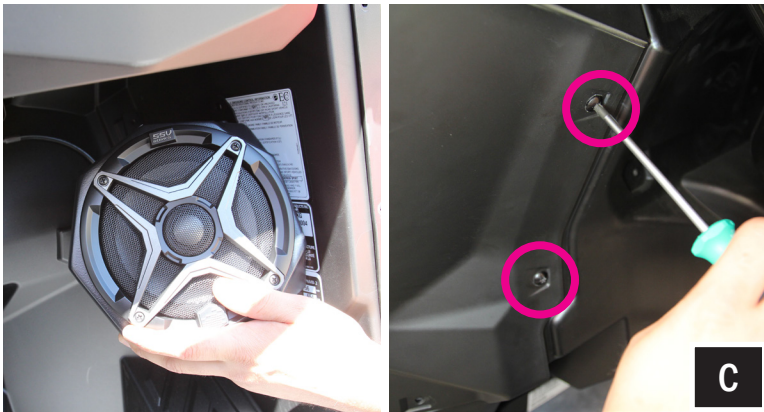
### INSIDE FRONT FENDER VIEW



B. Remove T30 torx screws and push pins securing the fender flare to the body of the machine.



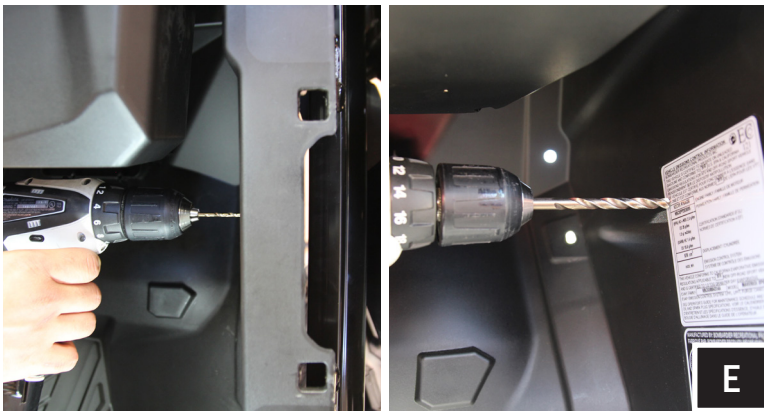
MT-2A



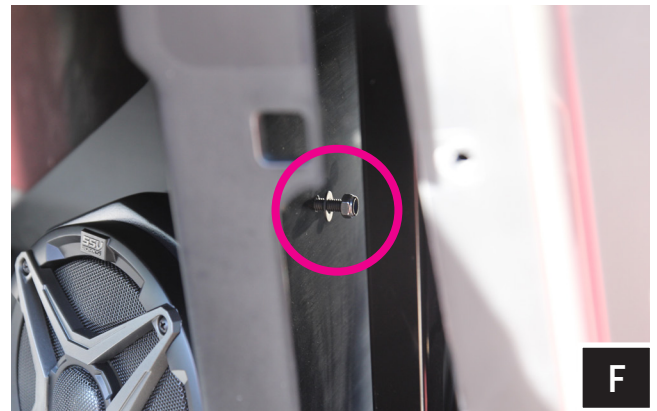
C. Put the pod in place and fasten the two (2) factory screws from the back side through the wheel well to secure the pod.



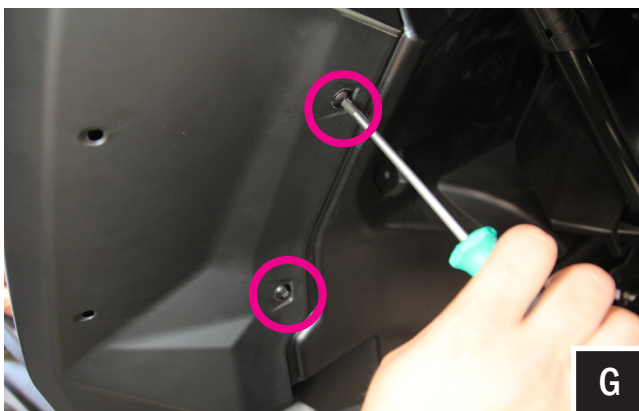
D. While holding the pod in place, use a scribe to mark a drill point for the pilot hole.



E. With the pod removed, use a 1/8" drill bit to drill a pilot hole. Then use a 1/4" drill bit for the mounting screw.



F. Pull away the fender to gain access to install the hardware. Place the pod back in the mounting location and loosely mount the top side of the pod FIRST using the provided T30 torx screw, 10mm nut and washer.



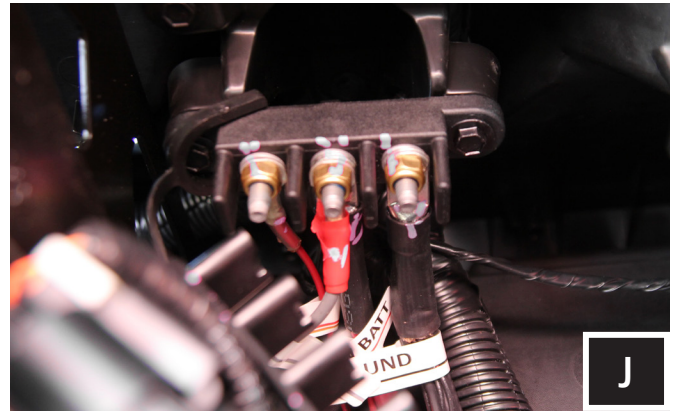
G. Fasten the two (2) factory screws from the back side through the wheel well to secure the pod. Then hand tighten all 3 (three) mounting screws to fully secure the pod.



H. Route B-H1149 speaker harness along the underside of the dash. Avoid sharp edges and rotating parts, zip tie harness in place. Note: Verify each end of the harness goes to the correct side of the vehicle. Each connector is properly labeled driver/passenger



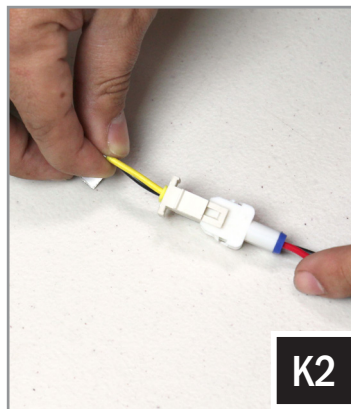
I. Connect the B-H1149 speaker wire outputs to each pod.



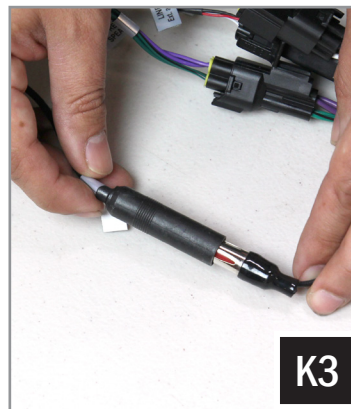
J. From under the dash, pull guard away from bus bar, unscrew the nut on the center position terminal for 12v constant or the third position for accessory power and attach the red POWER wire. Refasten on the nut (C1). Then unscrew the nut on the first position terminal and attach the black GROUND wire. Re-screw on the nut (C2).



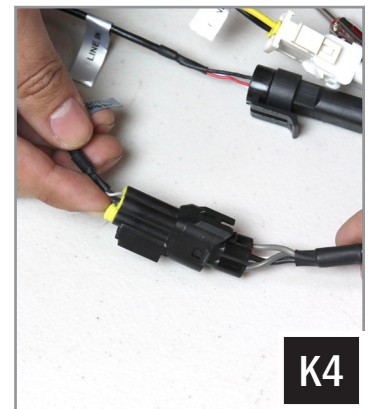
K1. Connect the MRB3 controller to the brain.



K2. Connect the power/ground wire.



K3. Connect the antenna. Route the antenna wire under dash.



K4. Connect the Front Speaker output from the MRB3 brain to the B-H1149 speaker harness.

