



SSV WORKS, 201 N. Rice Ave Unit A, Oxnard, CA 93030
www.SSVworks.com | Phone: 818-991-1778 | Fax: 866-293-6751

KX-Q5XA2

Teryx KRX 1000
SSV Works 5 Speaker Audio Kit



Teryx KRX 1000

pg 6

Panels, Dash Disassembly,
and Wiring

pg 7

Amp Tray
Installation

pg 10

MRB2R
Installation

pg 12

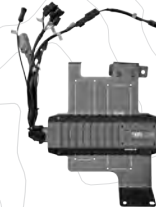
Subwoofer
Installation

pg 13

Kick Panel Speakers
Installation

pg 15

Cage Mount Speakers
Installation





SSV WORKS, 201 N. Rice Ave Unit A, Oxnard, CA 93030
 www.SSVworks.com | Phone: 818-991-1778 | Fax: 866-293-6751

Wiring Installation

WARRANTY INFORMATION:

All SSV Works enclosures are covered by a limited lifetime warranty against defects in material or workmanship. All SSV Works Electronics are covered by a limited 1 year warranty against defects in material or workmanship. All SSV Works Speakers are covered by a limited 1 year warranty against defects in material or workmanship. Labor for replacement of defective components is not covered. Contact SSV Works for further warranty information.



Please read and understand these instructions completely before installation to avoid possible injury, or damage to the accessory or vehicle.

TOOLS NEEDED FOR INSTALLATION

- T30 torx
- 10mm wrench or ratchet
- 13mm wrench or ratchet
- 18 mm socket with extention
- Wire crimpers
- Panel removal tool
- #2 screw driver
- #3 screw driver

PARTS LIST IMAGES



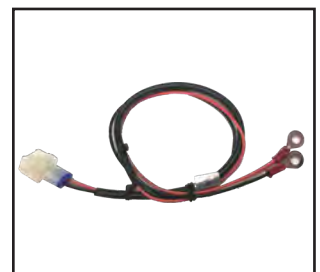
1. Amp Power Wire x2



2. B-H1909 Front Speaker Harness



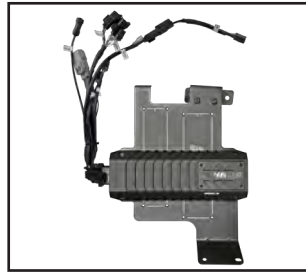
3. B-H1912 & B-H1913 Rear Speaker Expansion x 2



4. MRB3 Power & Ground Connector



5. B-H2195 Rear Speaker Harness



6. Amp Tray with pre-loaded PhaseEQ Amp



7. M6 Flange Hex Head Bolt



8. M6 x 16mm Screw x 2
M6 Washer x 3



9. M6 Locking Hex Nut



10. Zip Ties x 5



11. Fuse Holder with 40A Fuse x2



12. Battery Terminal Cable x2



SSV WORKS, 201 N. Rice Ave Unit A, Oxnard, CA 93030
www.SSVworks.com | Phone: 818-991-1778 | Fax: 866-293-6751

PARTS LIST 2/4

Under Seat Subwoofer Enclosure

WARRANTY INFORMATION:

All SSV Works enclosures are covered by a limited lifetime warranty against defects in material or workmanship. All SSV Works Electronics are covered by a limited 1 year warranty against defects in material or workmanship. All Kicker Speakers are covered by a limited 1 year warranty against defects in material or workmanship. All Kicker Amplifiers are covered by a limited 2 year warranty against defects in material or workmanship. Labor for replacement of defective components is not covered. Contact SSV Works for further warranty information.



Please read and understand these instructions completely before installation to avoid possible injury, or damage to the accessory or vehicle.

TOOLS NEEDED FOR INSTALLATION

- 18mm Wrench
- T-30 Torx Driver
- 9/32" or 17/64" Drill Bit
- Drill

PARTS LIST IMAGES



1. KX-PS10U Enclosure



2. M6 x 16mm Screws & Washers x 12



3. Bottom Bracket



4. Top Bracket



5. Side Bracket



6. B-H1389



7. 5/16" x 2



8. M6 x 25mm Screw Washer & Spacer



SSV WORKS, 201 N. Rice Ave Unit A, Oxnard, CA 93030
www.SSVworks.com | Phone: 818-991-1778 | Fax: 866-293-6751

PARTS LIST 3/4

Kick Panel Speaker Pods

WARRANTY INFORMATION:

All SSV Works enclosures are covered by a limited lifetime warranty against defects in material or workmanship. All SSV Works Electronics are covered by a limited 1 year warranty against defects in material or workmanship. All SSV Works Speakers are covered by a limited 1 year warranty against defects in material or workmanship. Labor for replacement of defective components is not covered. Contact SSV Works for further warranty information.



Please read and understand these instructions completely before installation to avoid possible injury, or damage to the accessory or vehicle.

TOOLS NEEDED FOR INSTALLATION

- T-30 Torx Driver - 10mm Wrench - Drill - 1/4" Drill Bit - Punch Tool

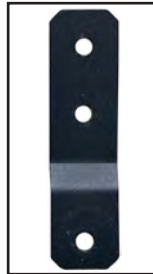
PARTS LIST IMAGES



1. KX-F65 Enclosures x2



2. Bracket "A"



3. Bracket "B"



4. Bracket "C"



5. Threaded Backing Plates x2



6. Bracket "D"



7. Bracket "E"



8. Bracket "F"



10. M6 x 16mm Screws and Washers x14



11. M6 x 25mm Screw and Locking Nut x2



SSV WORKS, 201 N. Rice Ave Unit A, Oxnard, CA 93030
www.SSVworks.com | Phone: 818-991-1778 | Fax: 866-293-6751

Cage Mount SSV Works 6.5" Speaker Enclosures

WARRANTY INFORMATION:

All SSV Works enclosures are covered by a limited lifetime warranty against defects in material or workmanship. All SSV Works Electronics are covered by a limited 1 year warranty against defects in material or workmanship. All SSV Works Speakers are covered by a limited 1 year warranty against defects in material or workmanship. All Kicker Speakers are covered by a limited 1 year warranty against defects in material or workmanship. All Kicker Amplifiers are covered by a limited 2 year warranty against defects in material or workmanship. Labor for replacement of defective components is not covered. Contact SSV Works for further warranty information.



Please read and understand these instructions completely before installation to avoid possible injury, or damage to the accessory or vehicle.

Placement of the pod depends on what type of roll cage you have (factory or aftermarket) and your preference of where you want the pods to be installed. In these instructions, we have installed them on the outside vertical bars at the back of the roll cage.

TOOLS NEEDED FOR INSTALLATION

- 5mm Allen Key
- 8mm Open End Wrench

PARTS LIST IMAGES



1. US-C65 Enclosures (1 pair)



2. Dual Mounting Ring Adapter x 2



3. Ring Clamp x 4

INCLUDES 1.85" CLAMP - AFTERMARKET ROLL CAGE MAY REQUIRE A DIFFERENT CLAMP SIZE



5. M6 Hex Head Bolts & Washers x4



6. M6 Allen Socket Head Bolts & Washers x4



7. M6 Set Screws x 4

INSTALLATION NOTES

It is recommended to wrap the bag that the clamps come in around the cage before you slide the clamp onto the cage to prevent scratching.

PANELS AND DASH DISASSEMBLY



A. To begin remove the (2) clips above the center dash compartment by using a clip removal tool. B. Open the dash compartment and remove the (2) clips.

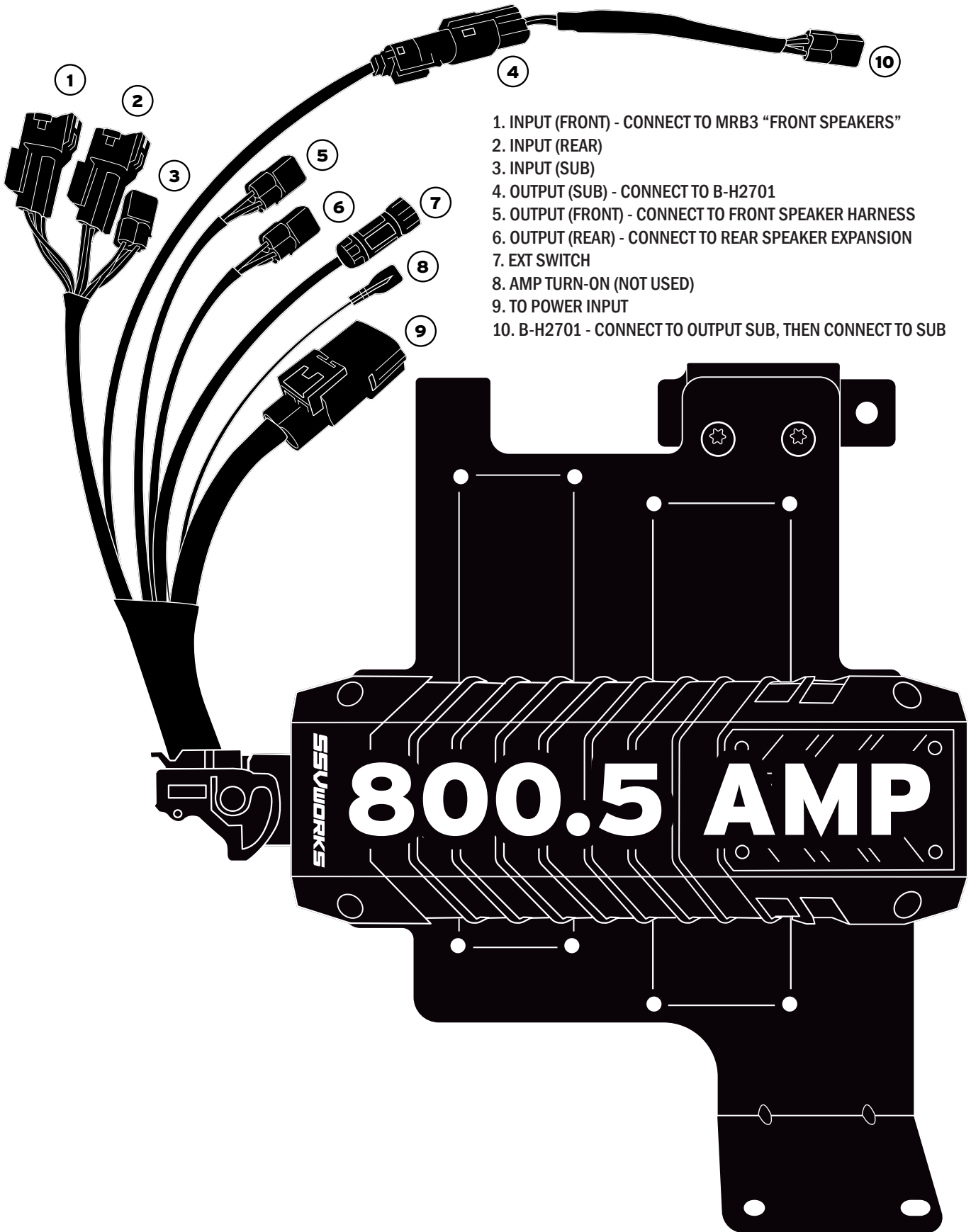


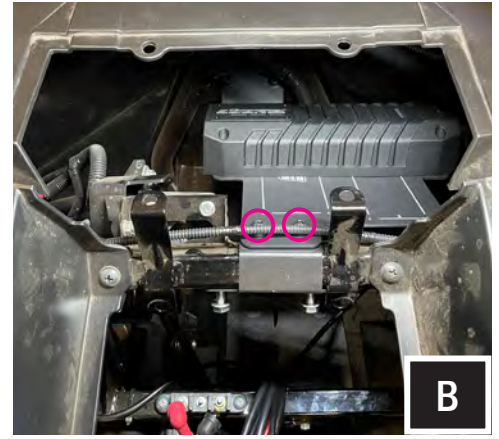
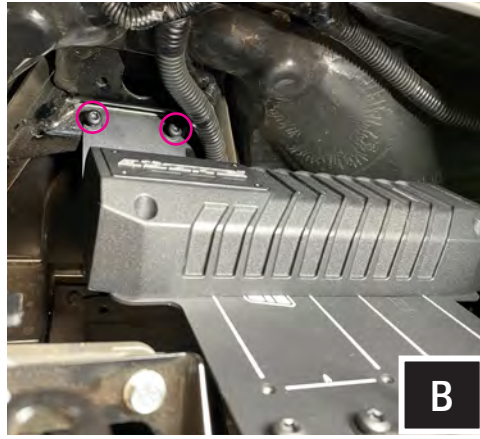
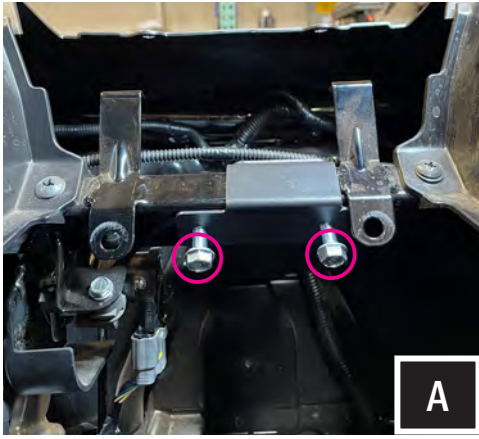
C. Remove the (2) clips located inside the dash cavity. D. Remove the (2) Phillips screws at the bottom of the center dash piece, located just underneath the rocker switch panel



E. Pull out entire center piece of dash, revealing the wiring behind.

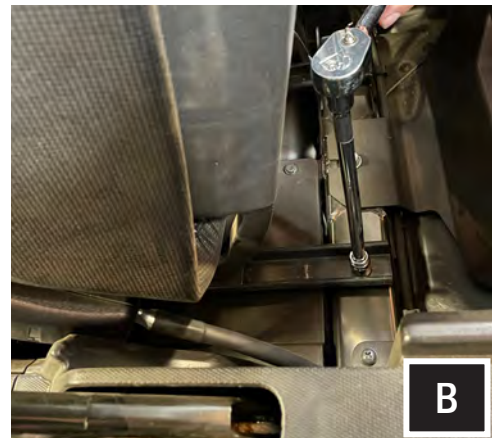
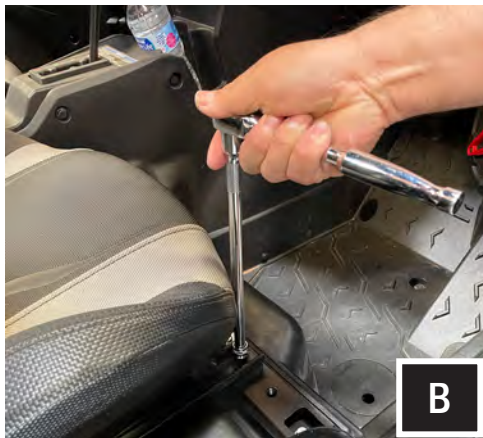
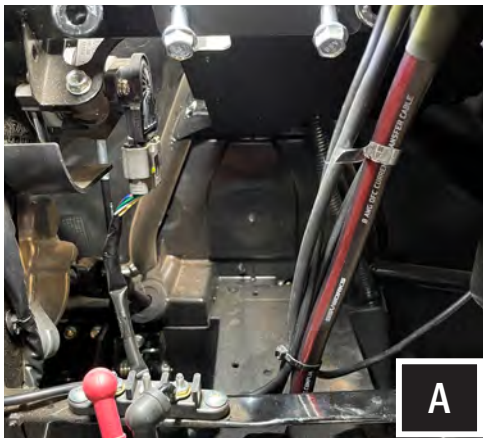
AMP PLATE INSTALLATION



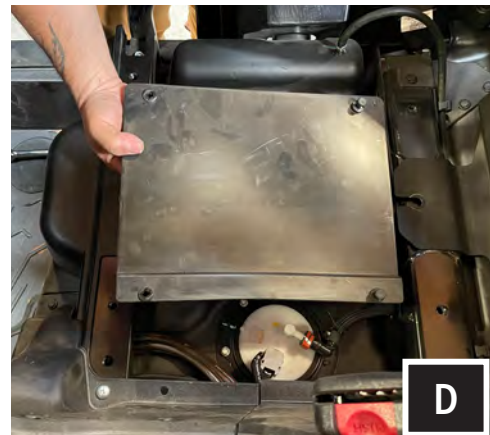
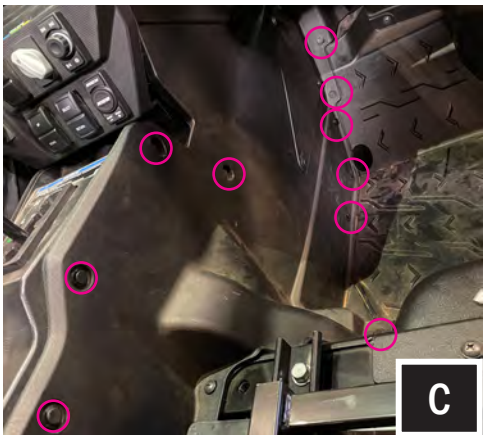


A. Start by mounting the smaller bracket onto the center bar using the (2) bolts. Hand tighten about half way. B. Place large plate with amp attached and screw in the rest of the screws. Go back and tighten bolts on smaller plate.

RUNNING AMP POWER CABLE AND SPEAKER WIRE



A. Run Power and Ground for Phase EQ from the amp to the center console. B. Remove the seat, use a 13mm socket and wrench to remove front (2) bolt and nut, and use a 18mm socket to remove (2) rear nuts and seat belt nut (repeat on other seat)



C. Remove panel clips from passenger side center console and pull panel out enough to access the insed for running cables. D. Using clip removal tool, unclip the (4) clips and remove fuel pump cover.



E. Remove clips and phillips screws from the center console.



F. Remove phillips screws and panel clips to remove the center panel on the back wall.



G. Remove Phillips screw inside cupholder.



H. Lift out center console



I. Once the seat, center console, and passenger side center console cover are removed, run wires back to battery.



J. Run wires behind driver seat and make sure to keep away from any moving parts. Zip tie to factor harness. K. Connect to battery terminal.

MRB2R



A. Run power and ground to busbar.



C. Using an air saw or dremel cut out holes on your rocker switch panel. Clean up with a file.

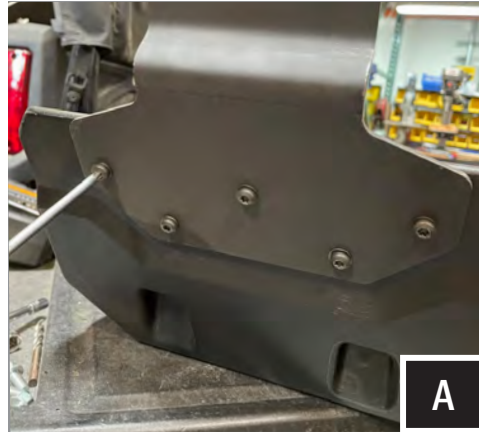
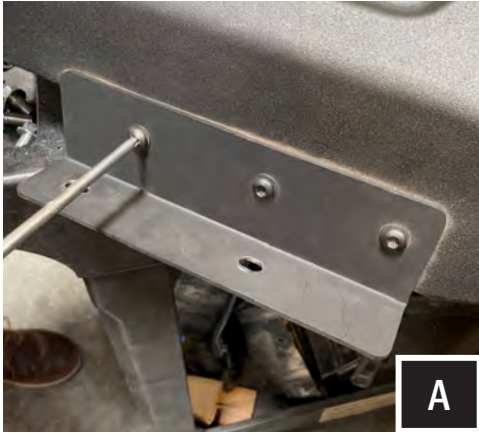


D. Push in both Rock and Ride switch and the MRB2R controller.



E. Carefully line up the plugs for Rock & Ride as well as for the MRB2R, push them together and hand screw nut to tighten.

SUBWOOFER ENCLOSURE



A. Mount plates to sub enclosure using the torx screws provided.



B. Place sub enclosure in its designed location behind passenger seat and using 9/32" or 17/64" drill bit, drill pilot holes where needed.



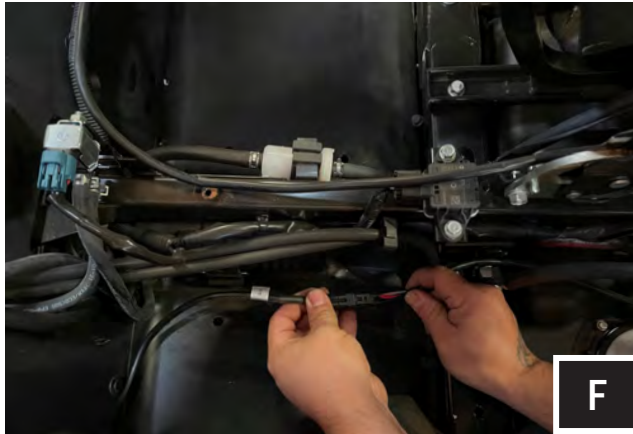
C. Pull enclosure away and finish drilling.



D. Place sub enclosure back in its designed location, place plastic spacer between sidewall of machine and side bracket. Tighten bolt down.



E. Tighten bolts on back wall.



F. Run sub wires to amp, avoiding moving parts.

FRONT KICK PANELS



A. B-H1909 connects to Front Output on 800.5 Amp and splits off to plug into each pod



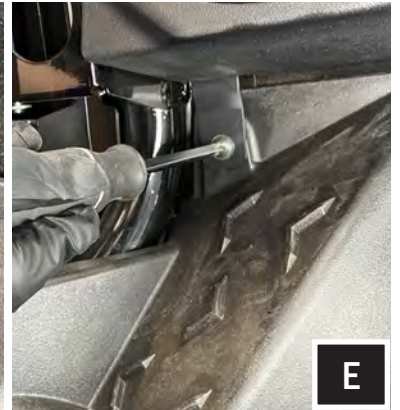
B. Attach Bracket "A" to the driver side pod and Bracket "E" to the passenger side pod as shown using two (2) M6 screws and washers.



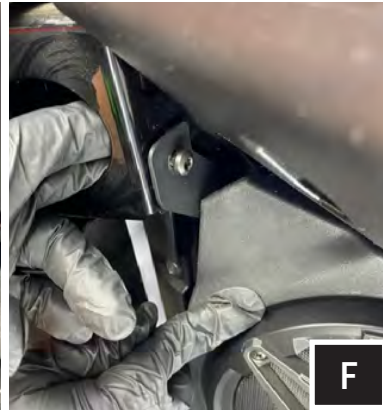
C. Attach Bracket "B" to the driver side pod and Bracket "F" to the passenger side pod as shown using two (2) M6 screws and washers.



D. Attach Bracket "C" to the driver side pod and Bracket "G" to the passenger side pod as shown using two (2) M6 screws and washers.



E. Starting on the drivers side, Remove the factory screw at the top of the footrest. Place the speaker pod in position and use the same factory screw to attach the bottom bracket.



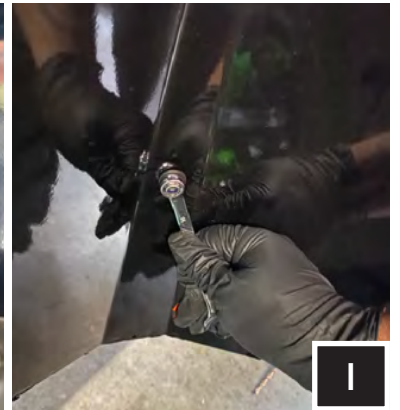
F. Place Bracket "D" through the door jam hole (as shown above) and use a M6 screw and washer to attach Bracket "A"



G. Using a punch tool, create a drill guide at the center of Bracket "C" hole.



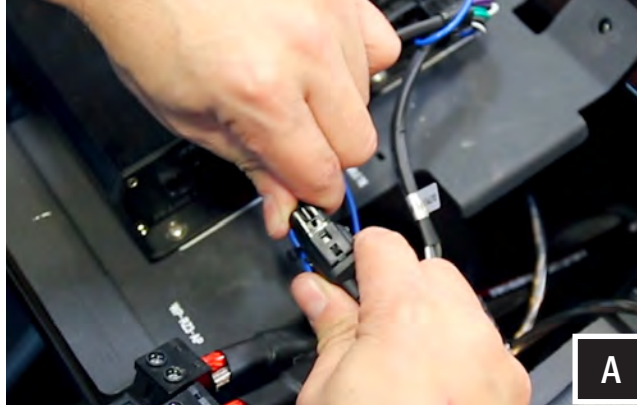
H. Using the guide left by the punch tool, drill a hole using a 1/4" drill bit



I. Connect Bracket "C" by pushing the 25mm M6 screw through the drilled hole and hand tighten the locking nut from the other side of the floorboard. It is recommended to have 2 people complete this step, one person on each end of the screw as it is tightened.

J. Repeat for Passenger side

SPEAKER POD INSTALL



A. Connect the B-H1912 and B-H1913 speaker harness to the SSV Works 800.5 amplifier rear output (green/purple). Then plug in B-H2195 which splits off an plugs into each pod.



B. Find your desired orientation for the US-C65A on your roll cage and fasten the set screws with a 3mm allen key in the opposite holes of where the clamp will install two.



C. Loosely install the clamp base to the US-C65A with (2) M6x1.0x20mm screws and washers using a 8mm open-ended wrench. Position the clamp base to your desired position and tighten the (2) M6x1.0x20mm screws.



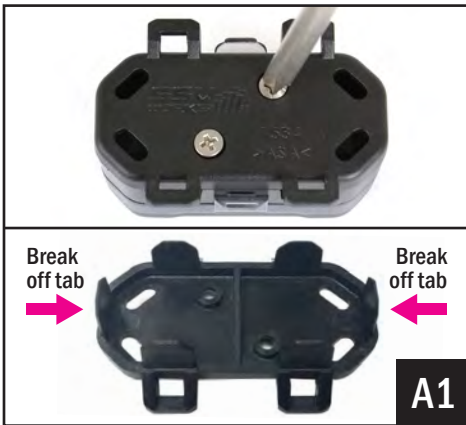
D. Wrap a plastic bag around the roll cage to prevent scratching. Press the clamps onto the roll cage over the plastic bag. Place the (2) M6x1.0x45mm screws and washers through the clamp and clamp base. Secure the clamps to the roll cage with a 5mm allen key.



E

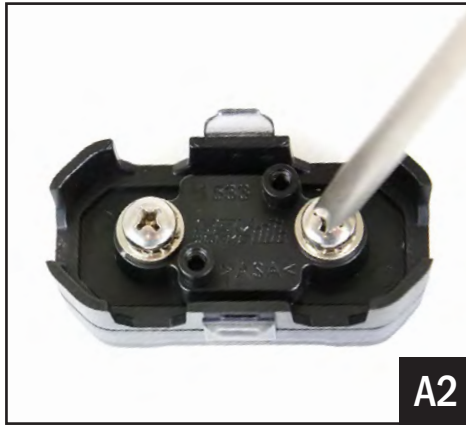
E. Position the speaker to your liking and tighten the 8mm hex screws.

CONNECTING POWER & GROUND CABLE TO BATTERY



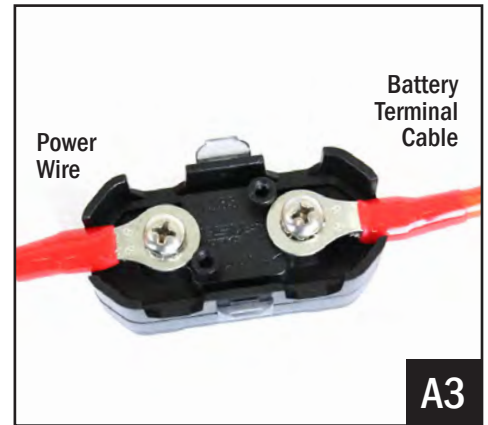
A1

A1. Remove the bottom cover of the fuse holder by extracting the 2 screws. Break off the right and left side tabs on the bottom cover.



A2

A2. Extract both fuse holder screws.



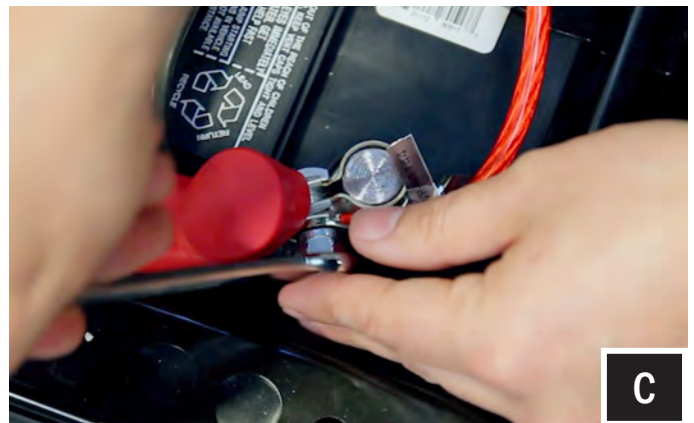
A3

A3. Attach both the Power Wire and Battery Terminal Cable to the fuse holder. Reattach the bottom cover.



B

B. Unscrew the factory nut on the negative battery terminal. Install the 2 ground cables to the screw on the ground battery terminal. Re-install the factory nut.



C

C. Unscrew the factory nut on the positive battery terminal. Install the 2 power cables to the screw on the positive battery terminal. Re-install the factory nut.



D. Remove the top of the fuse holder and extract the 2 screws. Insert the 40A fuse, screw the 2 screws back in and reattach the fuse holder top.



E. Zip tie all of the electrical cabling (factory and audio) along the center column away from the drive shaft.

THIS CONCLUDES THE INSTALLATION PROCESS.

THANK YOU!

We are committed to your satisfaction and we know you will enjoy our products. If you have questions or need any assistance, please let us know.

  [SSVWORKS.COM](https://www.ssvworks.com)
 1-818-991-1778 EXT 2
 SUPPORT@SSVWORKS.COM

Returns must be made within 30 days of purchase date. Claims for missing items or items damaged in transit must be received within five business days of receipt of merchandise. All returns must be in original packaging and in re-sellable condition. Shipping fees are not refundable.