



SSV WORKS, 201 N. Rice Ave Unit A, Oxnard, CA 93030
www.SSVworks.com | Phone: 818-991-1778 | Fax: 866-293-6751

JJT-SA065

Jeep Wrangler JL And JT Overhead Soundbar 6.5in Speaker Adapter

WARRANTY INFORMATION:

All SSV Works enclosures are covered by a limited lifetime warranty against defects in material or workmanship. All SSV Works Electronics are covered by a limited 1 year warranty against defects in material or workmanship. All Kicker Speakers are covered by a limited 1 year warranty against defects in material or workmanship. All Kicker Amplifiers are covered by a limited 2 year warranty against defects in material or workmanship. Labor for replacement of defective components is not covered. Contact SSV Works for further warranty information.



Please read and understand these instructions completely before installation to avoid possible injury, or damage to the accessory or vehicle.

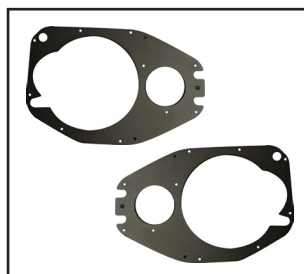
TOOLS NEEDED FOR INSTALLATION

- 5mm Allen key - T20,T30 Torx Driver - #2 Phillips Screwdriver - Permanent Marker - Reciprocating Air Saw - Liquid Thread Locker - Eye Protection & Gloves

PARTS LIST IMAGES



1. JJT-SA065 Adapters (1 pair)



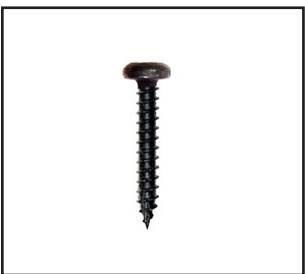
2. Adapter Base Plates (1 pair)



3. M4x0.7x12mm T20 Torx
Screws x12



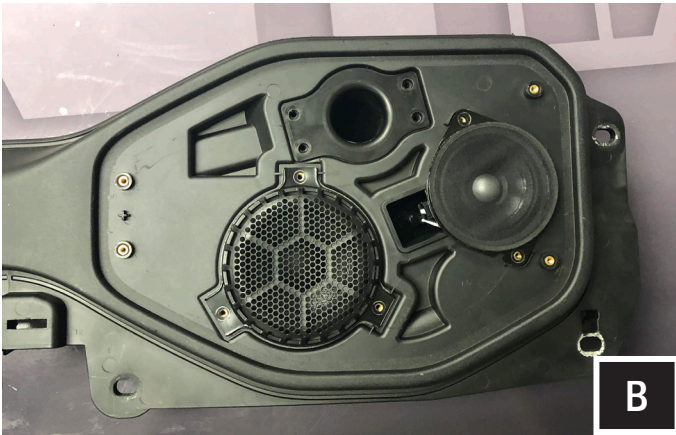
4. #7 Long Screws x8



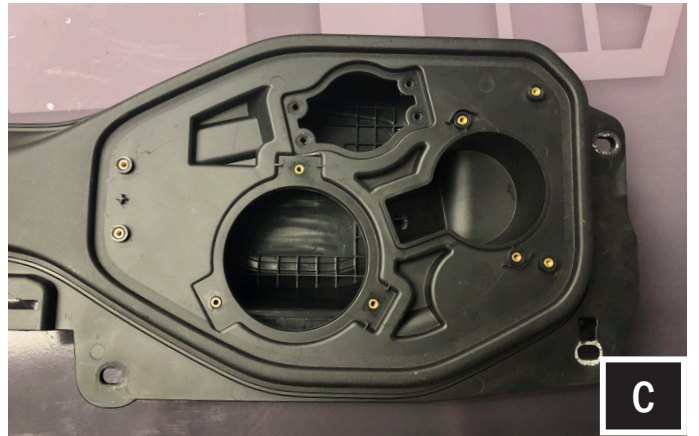
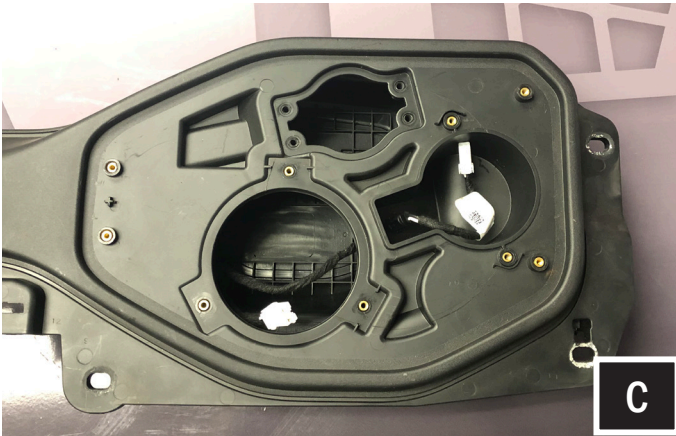
4. #7 Short Screws x20



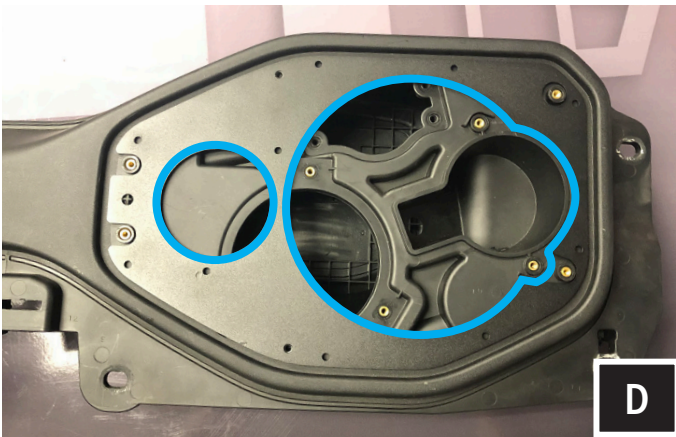
A. Remove the (4) 5mm allen head screws and grill.



B. Remove the (4) T30 torx screws from the port and (5) T20 screws from both speakers. Pull out the port, disconnect and set the speakers aside.



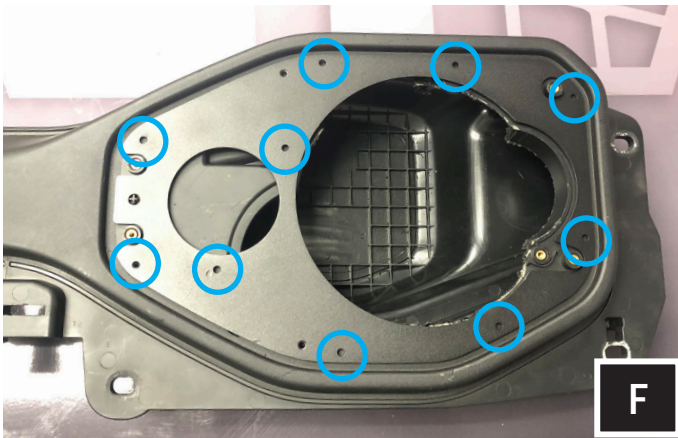
C. Unseat the grommet on the factory speaker harness. Then tuck speaker harness back towards the center of the sound bar to avoid being cut during steps E.



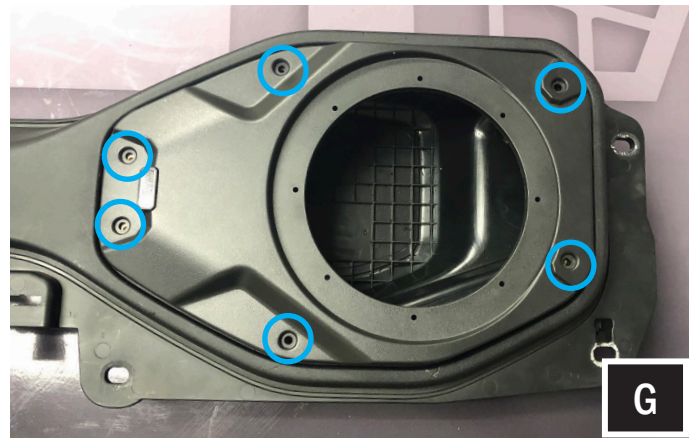
D. Set the adapter base plate onto the disassembled sound bar. With a permanent marker or paint pen, outline the perimeter of the adapter base plate to create a cut line.



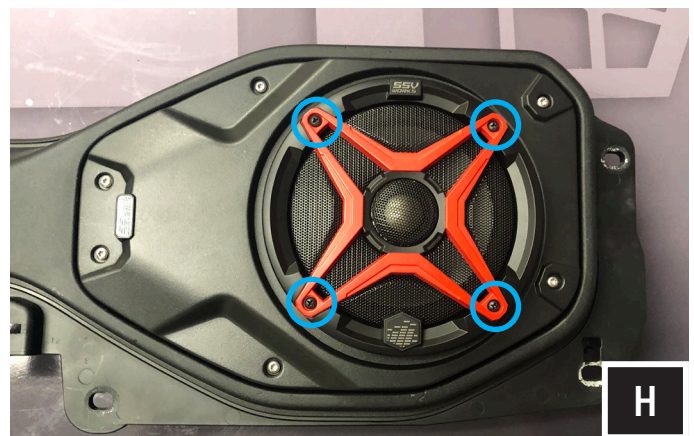
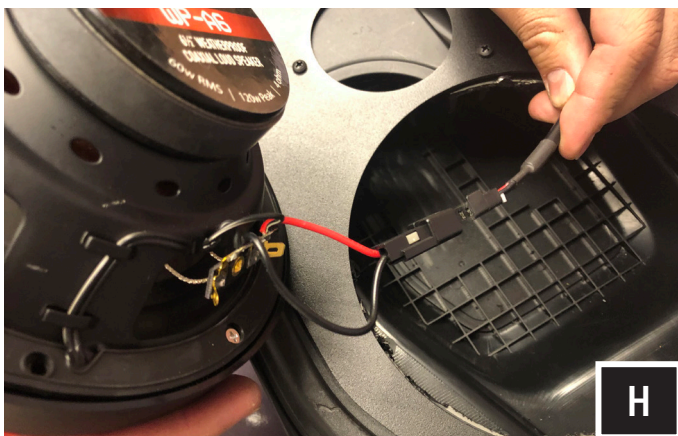
E. Set aside the adapter base plate and follow your cut-line with your preferred cutting device. NOTE: do not rush the cut process. We recommend having an extra set of hand to help steady the sound bar for your cuts. Control your cut speed and blade depth to avoid cutting through the opposite side of the sound bar. Be sure to always wear proper eye protection and gloves.



F. Reset the adapter base plate onto the sound bar and secure the plate to the sound bar with (10) #7 short screws. Do not over torque.



G. Place the adapter over the base plate and fasten the adapter to the base plate with the (6) provided M4x0.7x12mm T20 Torx screws. Use liquid Thread Locker on the screws.



H. Connect your speaker. Fasten the speaker to the adapter with the provided #7 long screws.

