



SSV WORKS, 201 N. Rice Ave Unit A, Oxnard, CA 93030
www.SSVworks.com | Phone: 818-991-1778 | Fax: 866-293-6751

GN-F65

Polaris General

6.5" Speaker Front Kick Panels

WARRANTY INFORMATION:

All SSV Works enclosures are covered by a limited lifetime warranty against defects in material or workmanship. All SSV Works Electronics are covered by a limited 1 year warranty against defects in material or workmanship. All SSV Works Speakers are covered by a limited 1 year warranty against defects in material or workmanship. Labor for replacement of defective components is not covered. Contact SSV Works for further warranty information.



Please read and understand these instructions completely before installation to avoid possible injury, or damage to the accessory or vehicle.

TOOLS NEEDED FOR INSTALLATION

- T-30 Torx Driver

- Drill with 1/4" Drill bit

- Scribe or Punch tool

PARTS LIST IMAGES



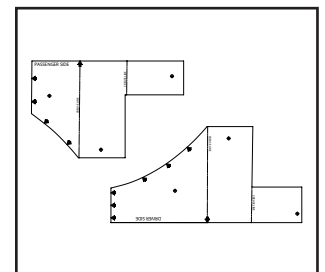
1. GN-F65 Enclosures (1 pair)



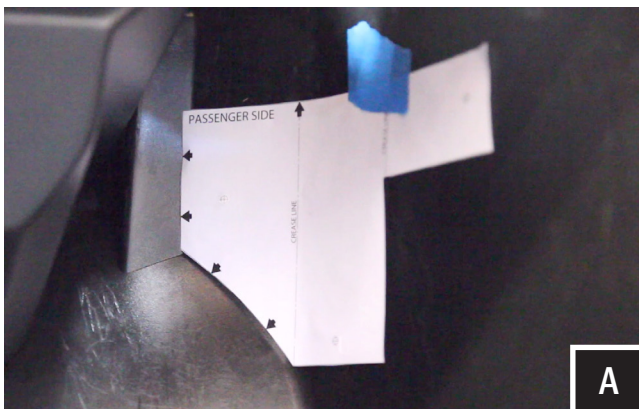
2. M6 x 1.0 Screws x 6



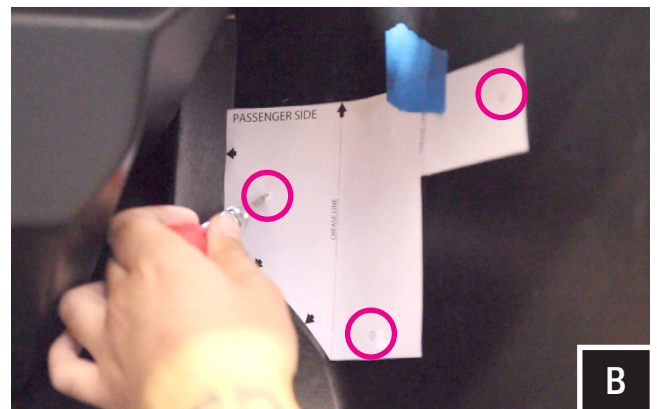
3. M6 Washers x 6



4. Drill Template



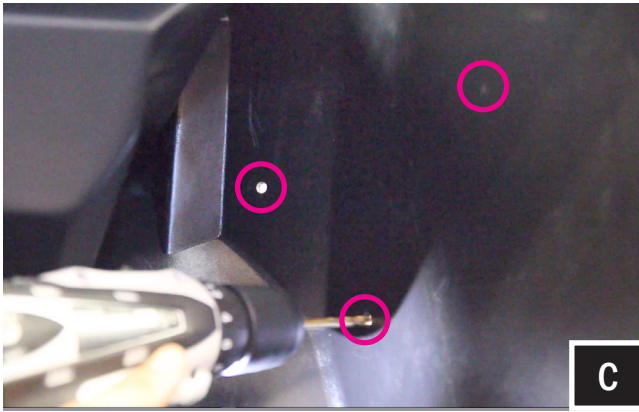
A



B

A. Cut out the INSIDE template (Driver/Passenger) along the cut line. Position the template on kick panel above the foot rest making sure to line up arrows on template to the curves of the panel as seen on image A.

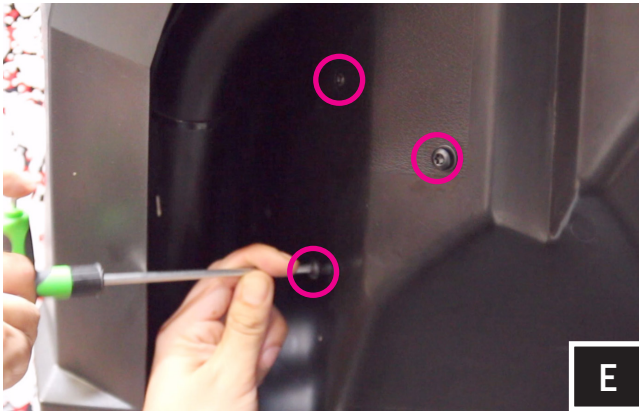
B. Using a scribing tool, mark the center of the 3 drill points illustrated on the template as shown on image B.



C. Using a 1/4 drill bit, drill holes for mounting of kick Pods .



D. Place enclosure in location for mounting.



E. Use the provided M6 screws and washers and loosely tighten the pod in place through the drilled holes. Once all screws have been loosely installed, tighten down by hand.



F. Route the speaker wire away from any moving parts and any sharp metal, then connect to the amplifier. Connecting the GN-F65 using the pre-installed, two-pin connector will require an optional SSV Works plug-&-play harness (WP-H1149 - sold separately). If you are not using the WP-H1149 harness, simply cut off the two-pin connector and follow the wiring instruction below.

WIRING INSTRUCTIONS

For proper sound, ensure the speaker polarity is correct connect the "+" to the "+" and the "-" to the "-" from the speaker wire to the amplifier. If using with an SSV Works complete system refer to the amplifier wiring instructions for more detailed wiring information.

