



SSV WORKS, 201 N. Rice Ave Unit A, Oxnard, CA 93030
www.SSVworks.com | Phone: 818-991-1778 | Fax: 866-293-6751

DF-F65

Can-Am Defender

6.5" Front Kick Panel Speaker Enclosures

WARRANTY INFORMATION:

All SSV Works enclosures are covered by a limited lifetime warranty against defects in material or workmanship. All SSV Works Electronics are covered by a limited 1 year warranty against defects in material or workmanship. Labor for replacement of defective components is not covered. All SSV Works Speakers are covered by a limited 1 year warranty against defects in material or workmanship. Contact SSV Works for further warranty information.



Please read and understand these instructions completely before installation to avoid possible injury, or damage to the accessory or vehicle.

TOOLS NEEDED FOR INSTALLATION

- T30 Torx Driver
- 1/8" Drill Bit
- 1/4" Drill Bit
- 10mm Wrench
- Scribe Tool

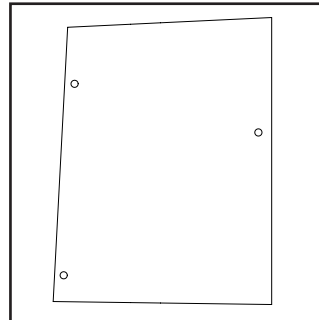
PARTS LIST IMAGES



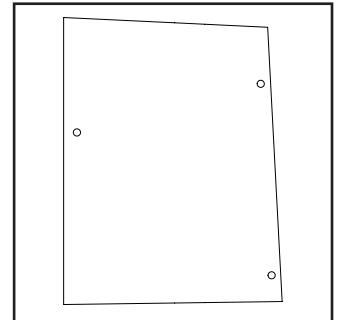
1. DF-F65 Enclosures (1 pair)



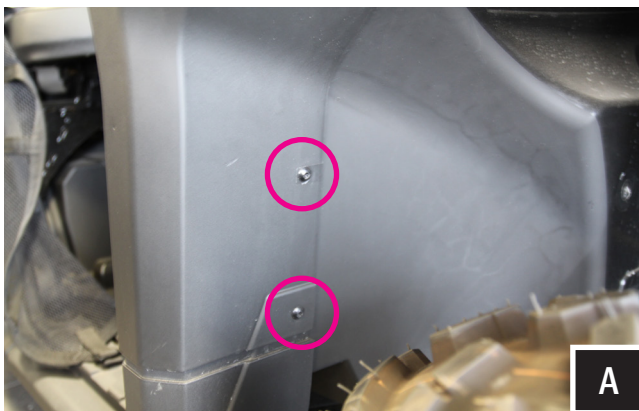
2. M6 x 16mm Screws and Washers x 2



3. Driver Side Drill Template

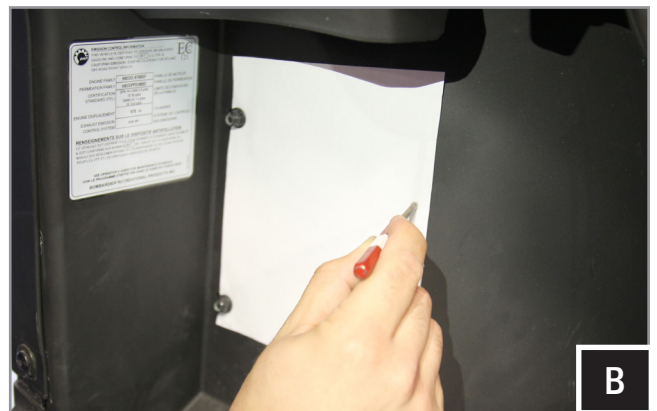


4. Passenger Side Drill Template

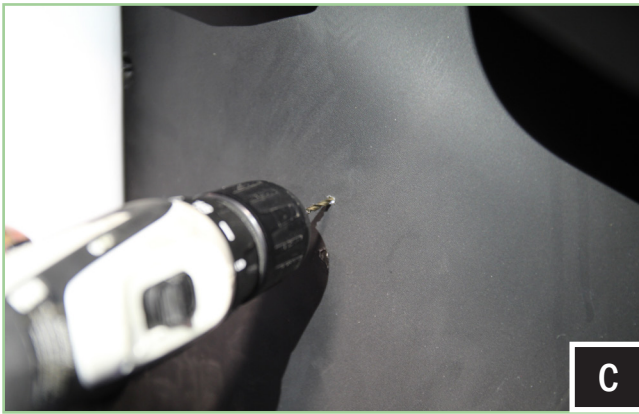


A. Remove the (2) bolts in the driver/pass footwell (circled in pink) with a 10mm wrench and T30 torx driver.

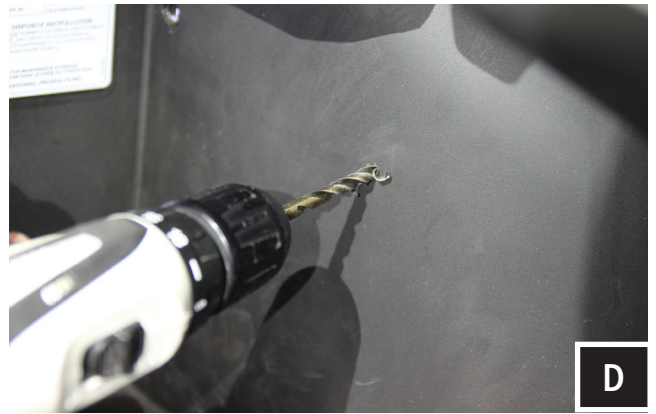
(View from front fender wheel well)



B. Cut out the (Driver/Passenger) template along the cut line. Position the template on the inside footwell and reinstall the (2) factory bolts previously removed through the template. Using a scribe tool, mark the center of the 3rd drill point illustrated on the template as shown in photo.



C. Remove the factory bolts and template and drill a 1/8" pilot hole at the points just marked with a scribe tool.



D. Drill a 1/4" hole through the pilot hole for mounting the pod.



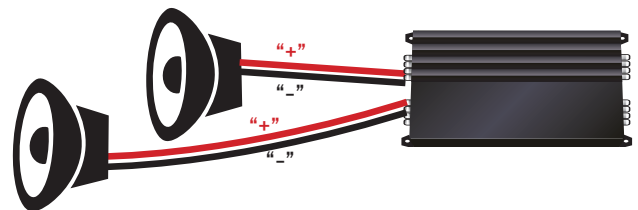
E. Place enclosure in location for mounting. Re-use the (2) factory T30 torx screws and SSV provided M6 screws and washers. to mount the pod loosely. Once all screws have been loosely installed, tighten down by hand.

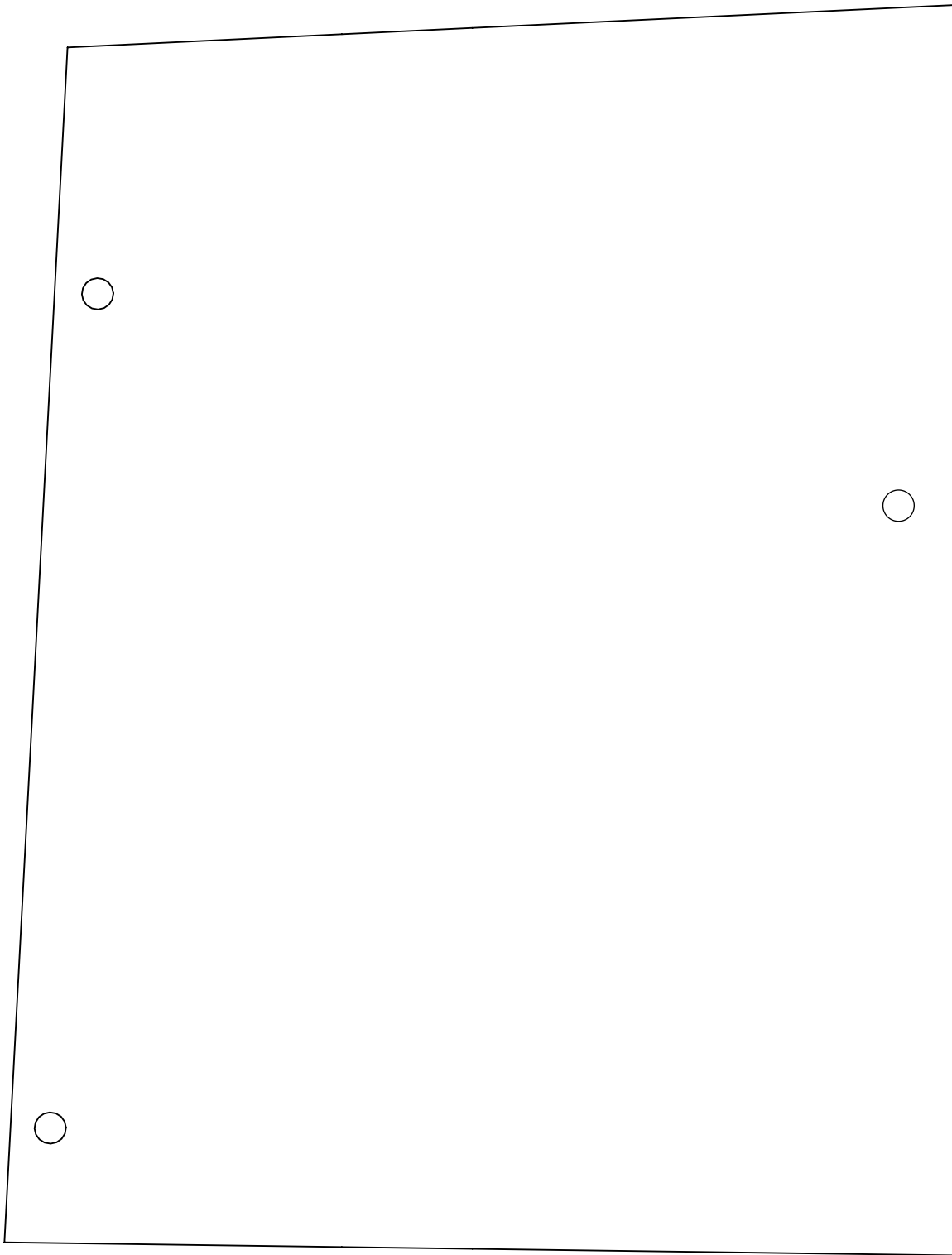


F. Route the speaker wire away from any moving parts and any sharp metal, then connect to the amplifier. Connecting the DF-F65 using the pre-installed, two-pin connector will require an optional SSV Works plug-&-play harness (WP-H1149 - sold separately). If you are not using the WP-H1149 harness, simply cut off the two-pin connector and follow the wiring instruction below.

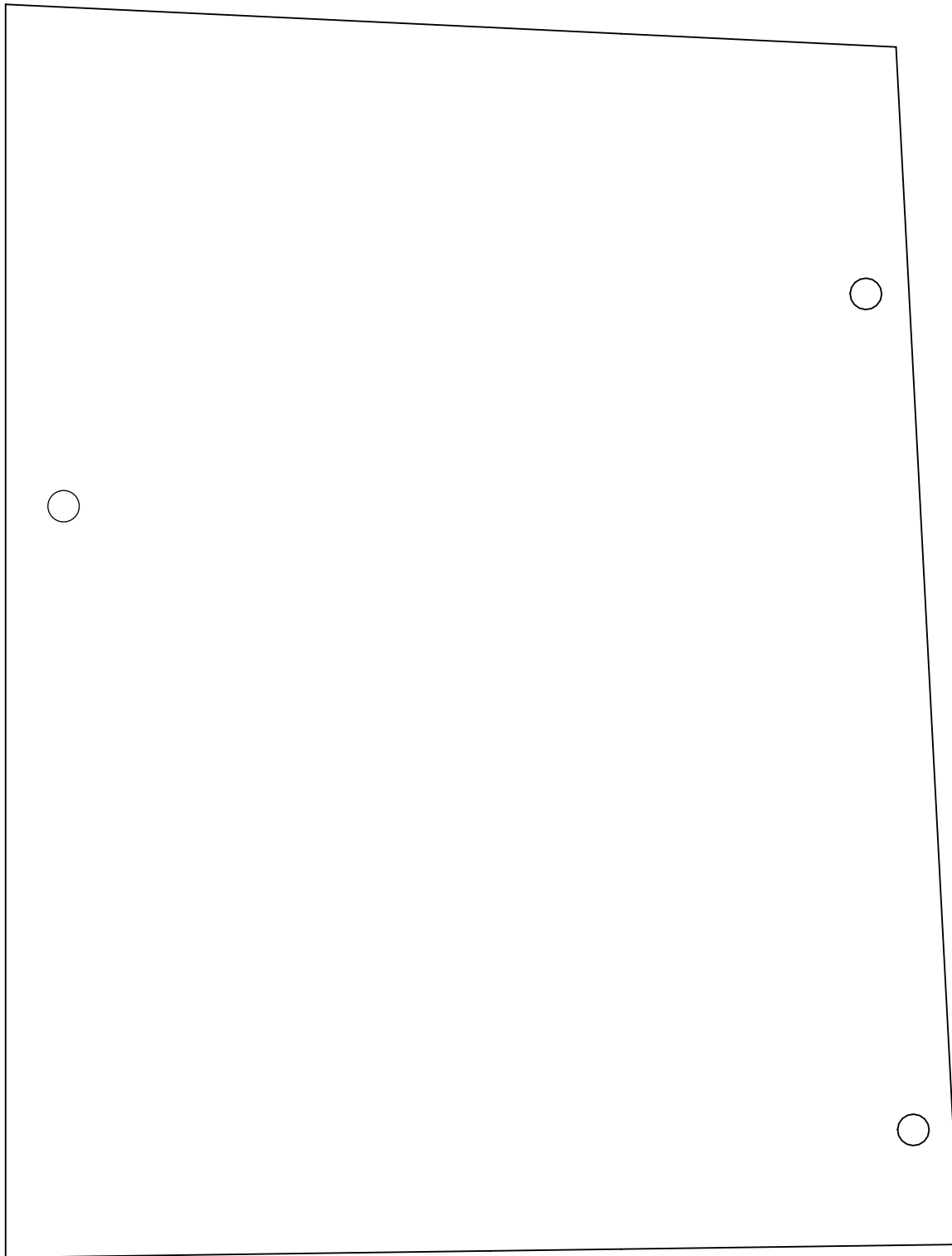
WIRING INSTRUCTIONS

For proper sound, ensure the speaker polarity is correct connect the "+" to the "+" and the "-" to the "-" from the speaker wire to the amplifier. If using with an SSV Works complete system refer to the amplifier wiring instructions for more detailed wiring information.





DEFENDER F65 DRIVER SIDE
DRILL TEMPLATE



DEFENDER F65 PASS SIDE
DRILL TEMPLATE