



DF-2A

Can-Am Defender
SSV Works 2 Speaker Audio Kit

pg 2

MRB3 and Dash Kit
Installation



pg 8

Kick Panel Speakers
Installation





SSV WORKS, 201 N. Rice Ave Unit A, Oxnard, CA 93030
www.SSVworks.com | Phone: 818-991-1778 | Fax: 866-293-6751

DF-2A

Can-Am Defender

MRB3 Dash Kit and MRB3 Brain Tray

TOOLS NEEDED FOR INSTALLATION MRB3 DASH KIT AND MRB3 BRAIN

- #2 Phillips Screw Driver - 1/8" drill bit - 3/32" drill bit - 5/16" drill bit - 9/16" drill bit - 5.5mm Wrench - Drill

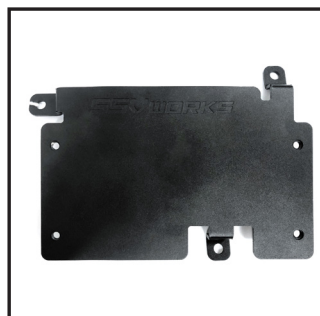
PARTS LIST IMAGES



1. DF-DM3 Dash Panel



2. MRB3 Bluetooth Media Player and Brain



3. MRB3 Brain Tray



4. Front B-H1149 Speaker Wire



5. MRB3 Power & Ground Connector



6. Antenna



7. Drill Guide Buttons & Plastic push pins x2



8. M3 x 20mm Screws, Washers and Hex Nuts x2



9. M3 Hex Nuts x 2



10. MRB3 Brain Plate Mounting Screws x3



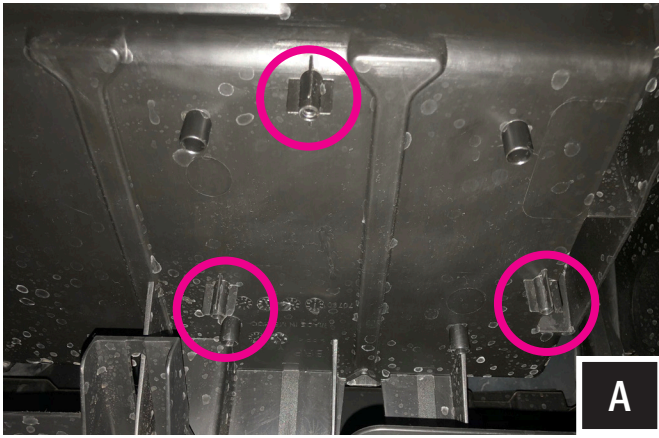
11. MRB3 Brain Mounting Screws x4



12. Zip Ties

INSTALLATION NOTES

For instructions regarding the MRB refer to the MRB3 manual.



A. Using the (3) mounting bosses on the underside of the dash of the passenger side pocket, place the MRB3 brain tray on the bosses and fasten it into place with the provided (3) screws and washers.



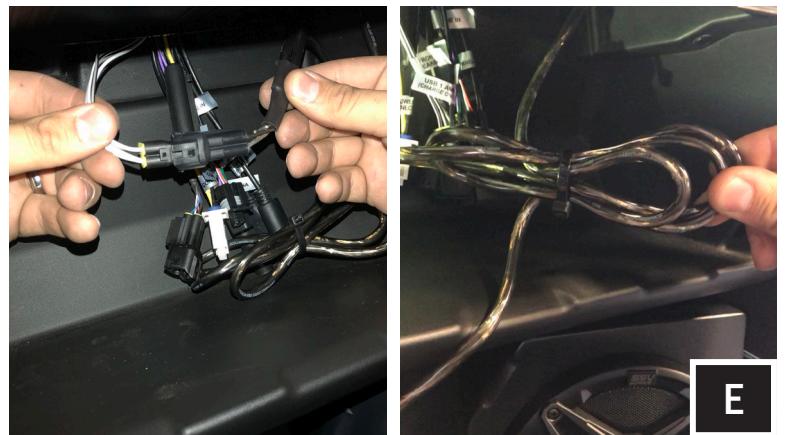
B. Once the MRB3 brain tray is secured, mount the MRB3 brain to the tray with the provided (4) M5 screws and washers.



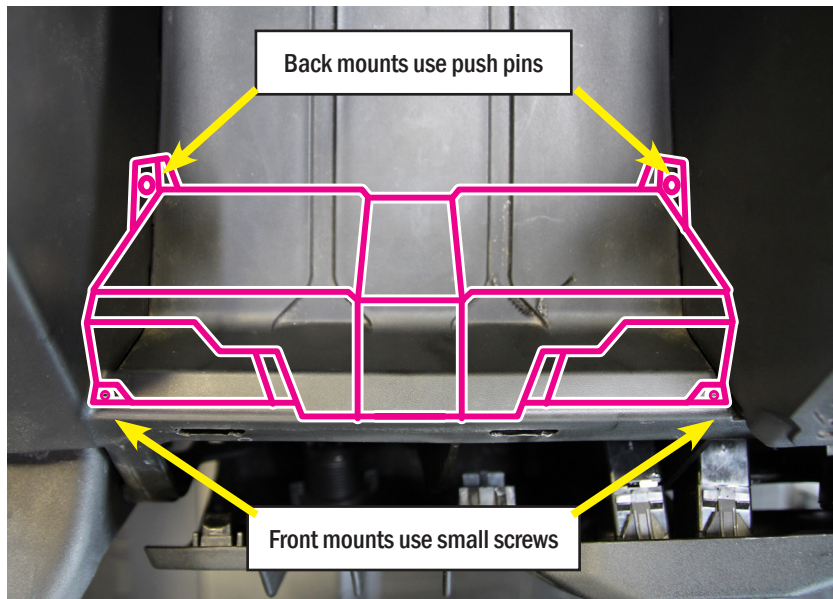
C. Route speaker harness B-H1149 across the inside of the dash to the driver and passenger side. Avoid any moving rotating parts. For the passenger side, tuck the harness down the side of the dash, and pull it through to connect to the pod.



D. For ease of access to route the driver side of the harness remove the pocket located above the pod.
To remove the pocket, pull the pocket open, slightly squeeze the sides, and twist it out.
Connect to the driver side speaker pod.



E. Connect the B-H1149 harness to the front channels (white/grey wires) of the MRB3 brain.
Once connected, coil up any slack and zip tie the additional cable neatly out of the way.



NOTICE: Top view of the dash where the DM3 dash mount kit will be installed.



F. Pry away ignition/switch panel from the bottom. Once detached from the dash, let the panel hang away from where you will be drilling.



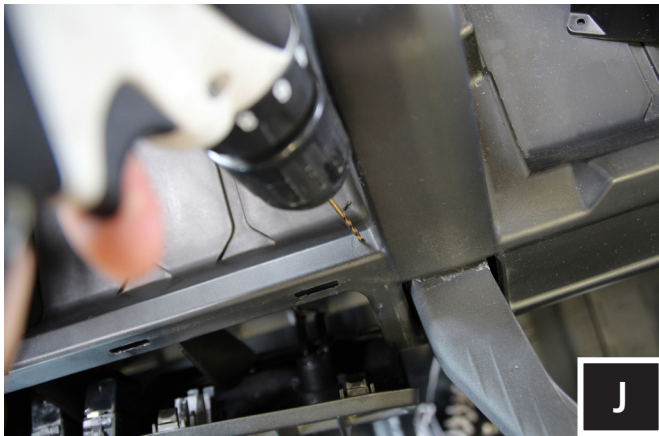
G. Insert the drill bit guide buttons into the two (2) mounting tabs on the back of DM3 dash kit



H. Drill pilot holes through the drill bit guides that were inserted into the back tabs in Step B with a 1/8" drill bit.



I. Place the MRB3 dash mount into its intended location and scribe marks through the front mounting tabs to drill pilot holes.



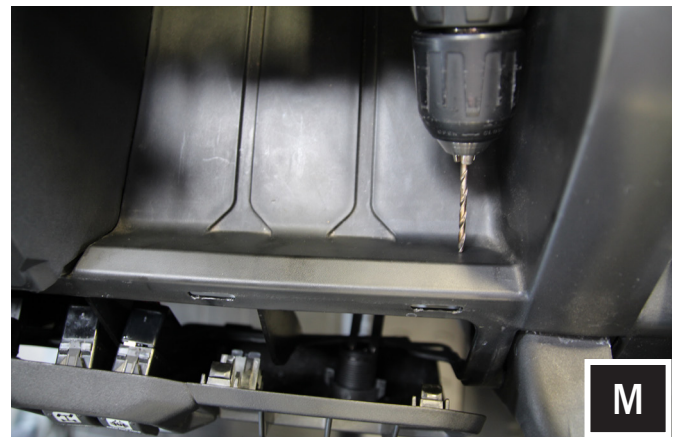
J. Remove the dash mount and drill out pilot holes using a 3/32" drill bit at the scribed locations from Step B



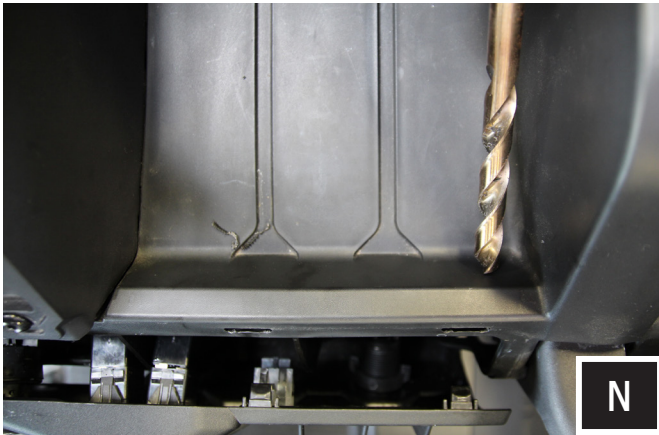
K. Follow through the pilot hole with a 5/16" drill bit.



L. Feed the MRB3 cable through the controller opening and place the MRB3 controller in the DM3. Fasten down with the two (2) provided Phillips screw and 5.5mm nuts.



M. Use a 1/8" drill bit to drill a pilot hole for the MRB3 cable.



N. Drill out the pilot hole with a 9/16" drill bit for routing controller cable through the dash.



O. Route the MRB3 controller cable through the 9/16" hole drilled in Step C and set the DM3 into place



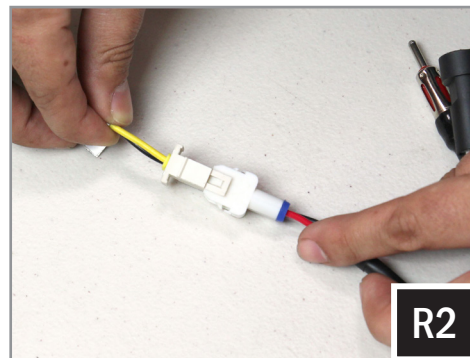
P. Insert push pins through the back of the DM3 into the dash.



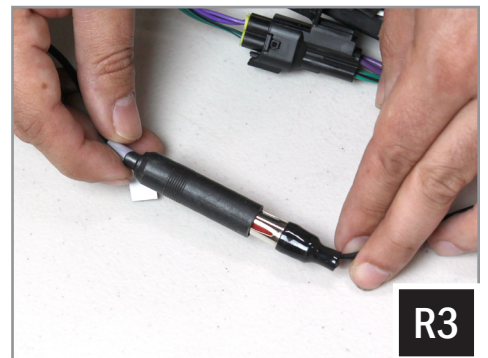
Q. Fasten the front of the DM3 with provided two (2) Phillips screws.



R1. Connect the MRB3 controller to the brain.



R2. Connect the power/ground wire.



R3. Connect the antenna.



S. From under the dash, pull guard away from bus bar, unscrew the nut on the center position terminal for 12v constant or the third position for accessory power and attach the red POWER wire. Refasten on the nut (C1). Then unscrew the nut on the first position terminal and attach the black GROUND wire. Re-screw on the nut (C2).



T. DM3 dash kit installation is now complete.



SSV WORKS, 201 N. Rice Ave Unit A, Oxnard, CA 93030
www.SSVworks.com | Phone: 818-991-1778 | Fax: 866-293-6751

DF-2A

Can-Am Defender

2-Speaker SSV Works Audio Kit

WARRANTY INFORMATION:

All SSV Works enclosures are covered by a limited lifetime warranty against defects in material or workmanship. All SSV Works Electronics are covered by a limited 1 year warranty against defects in material or workmanship. All SSV Works Speakers are covered by a limited 1 year warranty against defects in material or workmanship. Labor for replacement of defective components is not covered. Contact SSV Works for further warranty information.



Please read and understand these instructions completely before installation to avoid possible injury, or damage to the accessory or vehicle.

TOOLS NEEDED FOR SPEAKER POD INSTALLATION

- T30 Torx Driver
- 1/8" Drill Bit
- 1/4" Drill Bit
- 10mm Wrench
- Scribe Tool

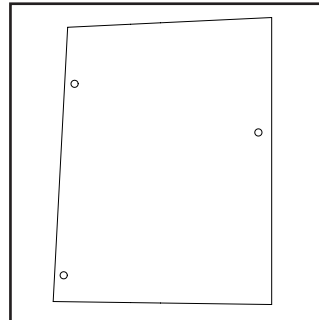
PARTS LIST IMAGES



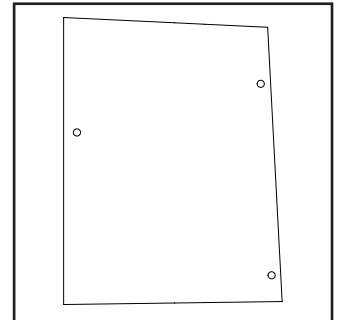
1. DF-F65 Enclosures (1 pair)



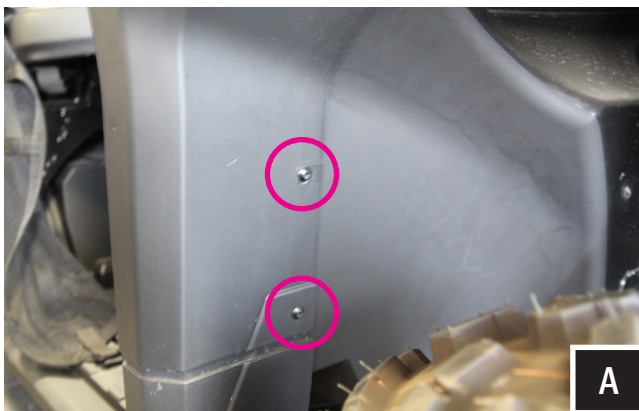
2. M6 x 16mm Screws and Washers x 2



3. Driver Side Drill Template

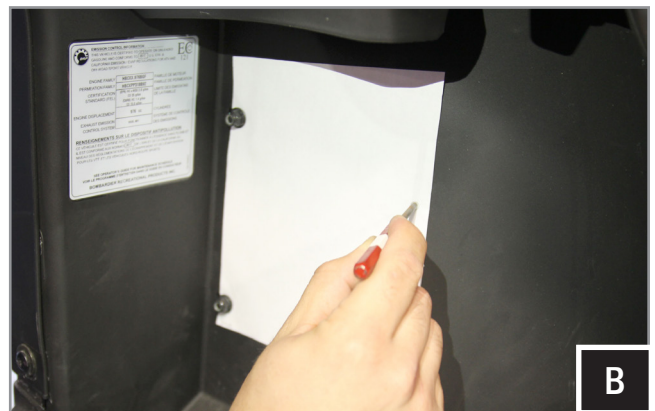


4. Passenger Side Drill Template

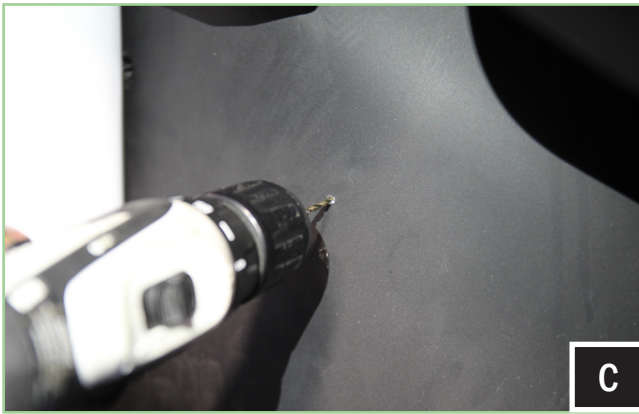


A. Remove the (2) bolts in the driver/pass footwell (circled in pink) with a 10mm wrench and T30 torx driver.

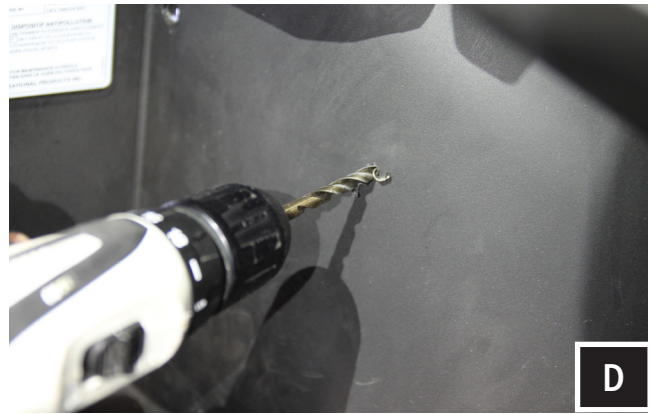
(View from front fender wheel well)



B. Cut out the (Driver/Passenger) template along the cut line. Position the template on the inside footwell and reinstall the (2) factory bolts previously removed through the template. Using a scribe tool, mark the center of the 3rd drill point illustrated on the template as shown in photo.



C. Remove the factory bolts and template and drill a 1/8" pilot hole at the points just marked with a scribe tool.



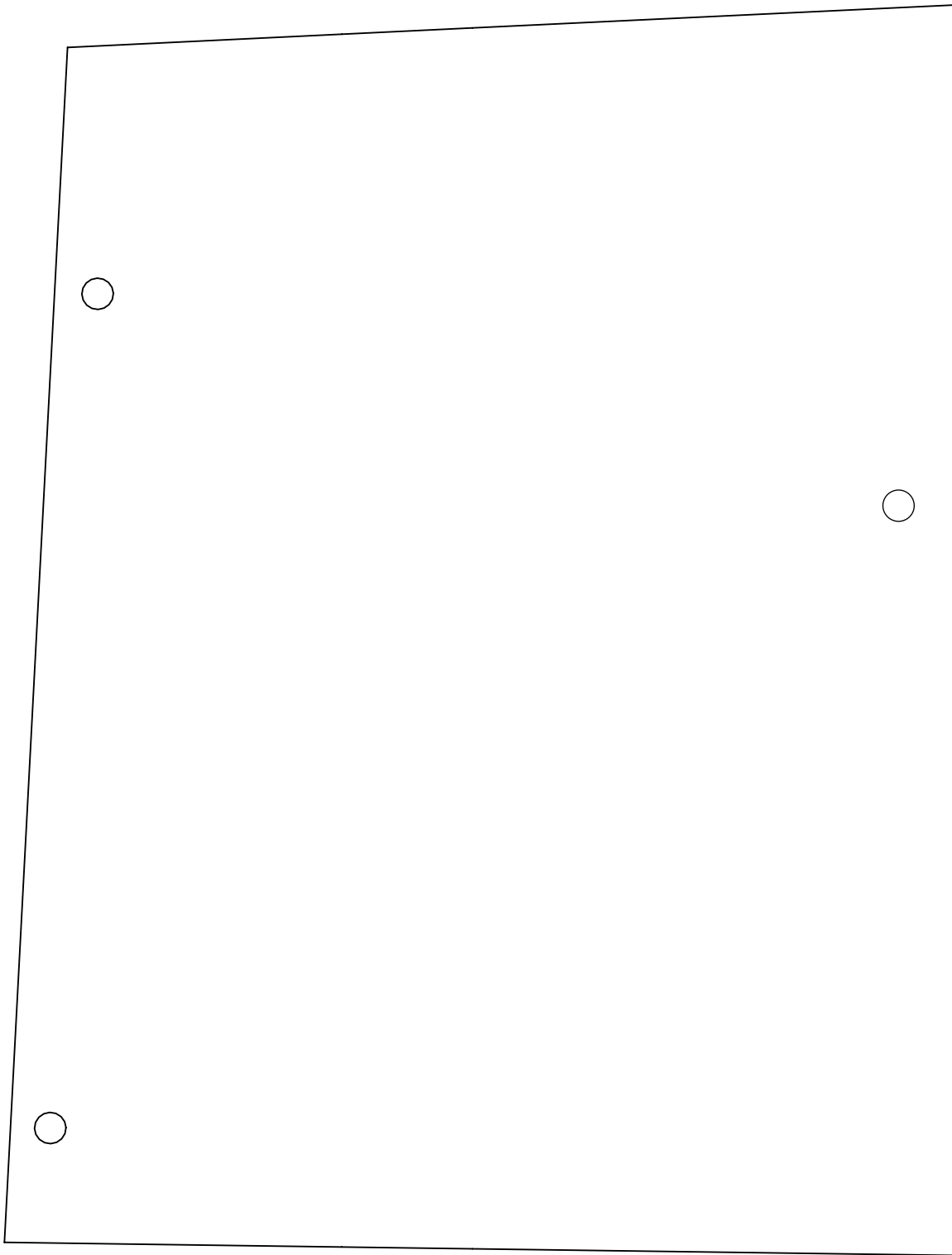
D. Drill a 1/4" hole through the pilot hole for mounting the pod.



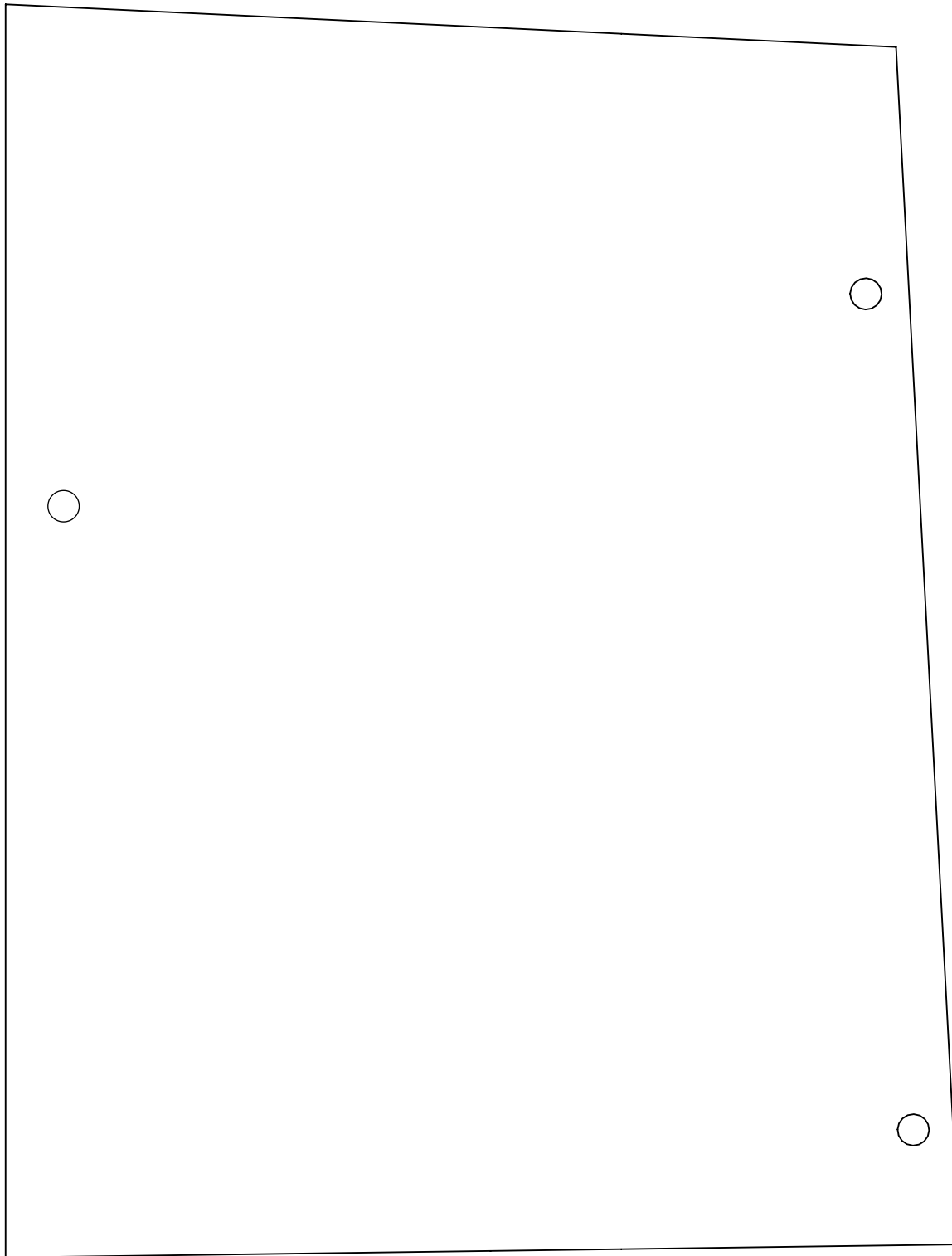
E. Place enclosure in location for mounting. Re-use the (2) factory T30 torx screws and SSV provided M6 screws and washers. to mount the pod loosely. Once all screws have been loosely installed, tighten down by hand.



F. Repeat for the opposite side.



DEFENDER F65 DRIVER SIDE
DRILL TEMPLATE



DEFENDER F65 PASS SIDE
DRILL TEMPLATE