



SSV WORKS, 201 N. Rice Ave Unit A, Oxnard, CA 93030
www.SSVworks.com | Phone: 818-991-1778 | Fax: 866-293-6751

BR-2B65U

2021+ Ford Bronco, 2 Door 6.5" Rear Speaker-Pod Add-Ons

WARRANTY INFORMATION:

All SSV Works enclosures are covered by a limited lifetime warranty against defects in material or workmanship. All SSV Works Electronics are covered by a limited 1 year warranty against defects in material or workmanship. All Kicker Speakers are covered by a limited 1 year warranty against defects in material or workmanship. All Kicker Amplifiers are covered by a limited 2 year warranty against defects in material or workmanship. Labor for replacement of defective components is not covered. Contact SSV Works for further warranty information.



Please read and understand these instructions completely before installation to avoid possible injury, or damage to the accessory or vehicle.

TOOLS NEEDED FOR INSTALLATION

- T25, T30 Torx Driver
- #1 Phillips Screwdriver

PARTS LIST IMAGES



Passenger Rear Door Pod



Driver Rear Door Pod



Bracket Pack



(x2) M6 x Screw



(x2) M6 Washer



(x2) #1 Phillips Screw

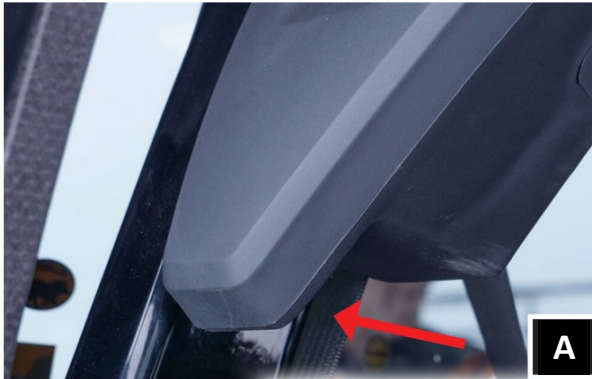


BR-2B65U

2023 SSV Works, Oxnard, Ca 93030

BR-2BR65 Rev. A. 4-24-23

DISASSEMBLY



A. Remove the screw located at the bottom of the speaker enclosure.



B. Removing the two screws securing the bracket to the vehicle. Then remove the two screws securing the bracket to the enclosure.

*Note: These 4 factory screws will be re-used for the SSV pods.
This image is of passenger side.

INSTALLATION



A. Secure the drivers side bracket to the driver side pod using the factory two screws.



B. Hold the pod up near its mounting location and connect the factory harness.



C. Snap the speaker pod harness cover onto the pod making sure the harness exits the cover through one of the two reliefs.



D. Use the provided Philips screw to secure the cover in place.

E. Loosely assemble the bottom of the pod to the frame of the vehicle using the provided M6 screw and washer.

INSTALLATION



E. Loosely assemble the bottom of the pod to the frame of the vehicle using the provided M6 screw and washer.



F. Install the two factory bolts securing the pod to the vehicle.

Note: Image is of passenger side.



G. Fully tighten the bottom screw located at the bottom of the pod.

Repeat all steps for the opposite side.