



230-MAVR-SWE12

Can Am Maverick R (XRS) Alpha12 Switcher Box Mounting Kit

SSV WORKS, 201 N. Rice Ave Unit A, Oxnard, CA 93030

www.SSVworks.com | Phone: 818-991-1778 | Fax: 866-293-6751

WARRANTY INFORMATION:

ALL SWITCH Works Electronics are covered by a limited 1 year warranty against defects in material or workmanship. Contact SSV Works for further warranty information.



Please read and understand these instructions completely before installation to avoid possible injury, or damage to the accessory or vehicle.



BY





*MAV R Controller, Push-In Dash Panel
[B-D3363]*



*MAV R Brain Module Bracket
[B-MB3386]*



*Hex Head M6x16mm Screw & Washer
(x2) [B-HPM616-2]*



*M5x0.8x10, Screws (x4)
[B-S1158]*



*4-40x0.375 Fine Thread
Cutting Screw (x4)
[B-HP3356]*



INSTALLATION

WARRANTY INFORMATION:

All SSV Works enclosures are covered by a limited lifetime warranty against defects in material or workmanship. All SSV Works Electronics are covered by a limited 1 year warranty against defects in material or workmanship. Labor for replacement of defective components is not covered. Contact SSV Works for further warranty information.



Please read and understand these instructions completely before installation to avoid possible injury, or damage to the accessory or vehicle.

TOOLS NEEDED FOR INSTALLATION

- T30, T40 Torx Driver
- 13mm wrench
- Phillips Screw Driver
- Plastic Pry Tool

PANELS AND DASH DISASSEMBLY



A. Mount the 15 button controller to the Mav R Push-In dash panel using the provided (4) 4-40x0.375 thread cutting screws [B-HP3356]



B. Remove the rocker switch panel using a plastic pry tool.



C. Remove the driver side center dash side panel. It is held by clips.



D. Run the cable towards the bottom of the dash. Line up the bottom side of the controller to the dash opening and push in the top to lock it in place.



Completed installation of 15-Button Controller.

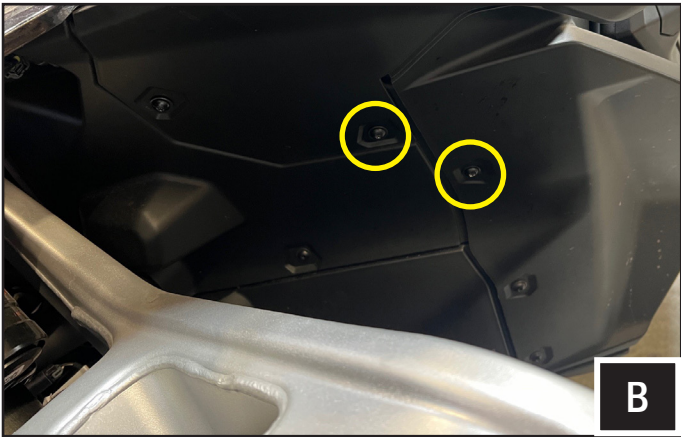
SWITCH Works Brain Module Installation

TOOLS NEEDED FOR INSTALLATION

- Phillips Screw Driver
- T-30 Torx Driver



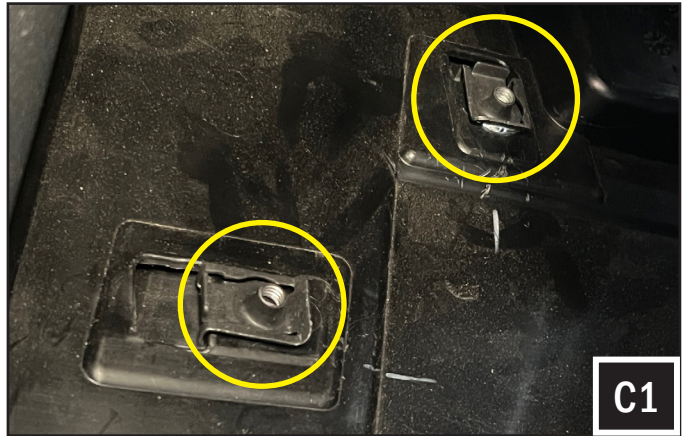
A. Mount the ALPHA12 Brain module to the Mav R brain module bracket using (4) M5x10mm Phillips screws [B-S1158].



B. Remove the (2) factory T-30 screws, circled above, on the driver side wheel well liner.



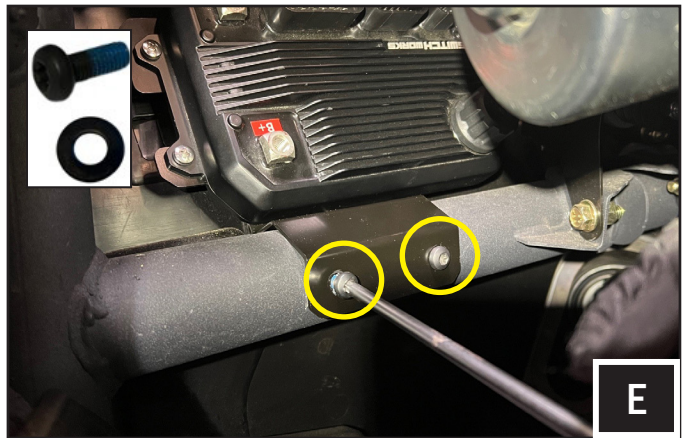
C. Remove the (2) factory U-Nuts that were used to fasten the (2) bolts removed in step B.



C. It might be easier to remove the (2) U-Nuts from inside the vehicle.



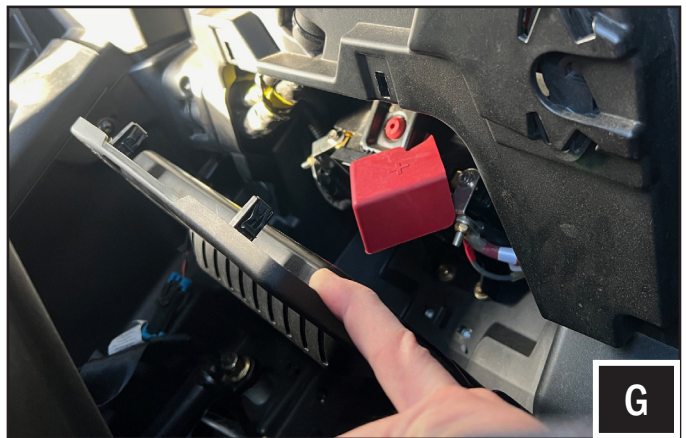
D. While holding the ALPHA12 brain and bracket with your right hand, use your left hand to screw in the (2) factory bolts removed in step B.



E. Use the (2) M6-16mm screws and washers [B-HPM616-2], included in the kit, to secure the Mav R brain bracket to the factory PEM nuts in the tubing.



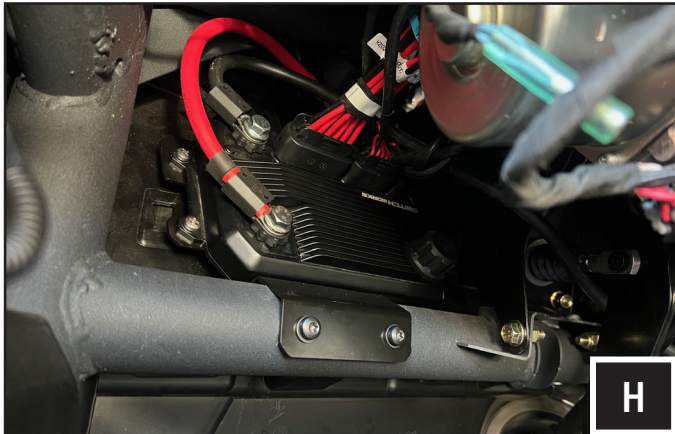
F. Run the power cable to the battery behind the driver seat.



G. Open the battery panel to access the battery.



INSTALLATION



H. Connect the accessories to the High and Low current harnesses and plug the harnesses to the brain module. NOTE that the 15 button controller MUST be plugged in to the module before connecting the power and ground cables to the battery. Snap on the terminal cover to the module's + terminal.



I. Refer to the SW-E12 instructions manual for a detailed installation and programming procedure of the SWITCH Works Alpha12.

THIS CONCLUDES THE INSTALLATION PROCESS. QUESTIONS? PLEASE CONTACT SSV WORKS AT 818-991-1778 OR EMAIL SUPPORT@SSVWORKS.COM

THANK YOU

SWITCHWORKS ALPHA12™ BY SSVWORKS

SWITCH Works is a product by SSV Works. We are committed to your satisfaction and we know you will enjoy our products. If you have questions or need any assistance, please let us know.


 **SSVWORKS.COM**
 **1-818-991-1778 EXT 2**
 **SUPPORT@SSVWORKS.COM**

Returns must be made within 30 days of purchase date. Claims for missing items or items damaged in transit must be received within five business days of receipt of merchandise. All returns must be in original packaging and in re-sellable condition. Shipping fees are not refundable.