



TRANSFORM YOUR HOME INTO A SPECIAL PLACE TO LIVE.

We enable you to create a beautifully designed interior whatever the scale of your project.

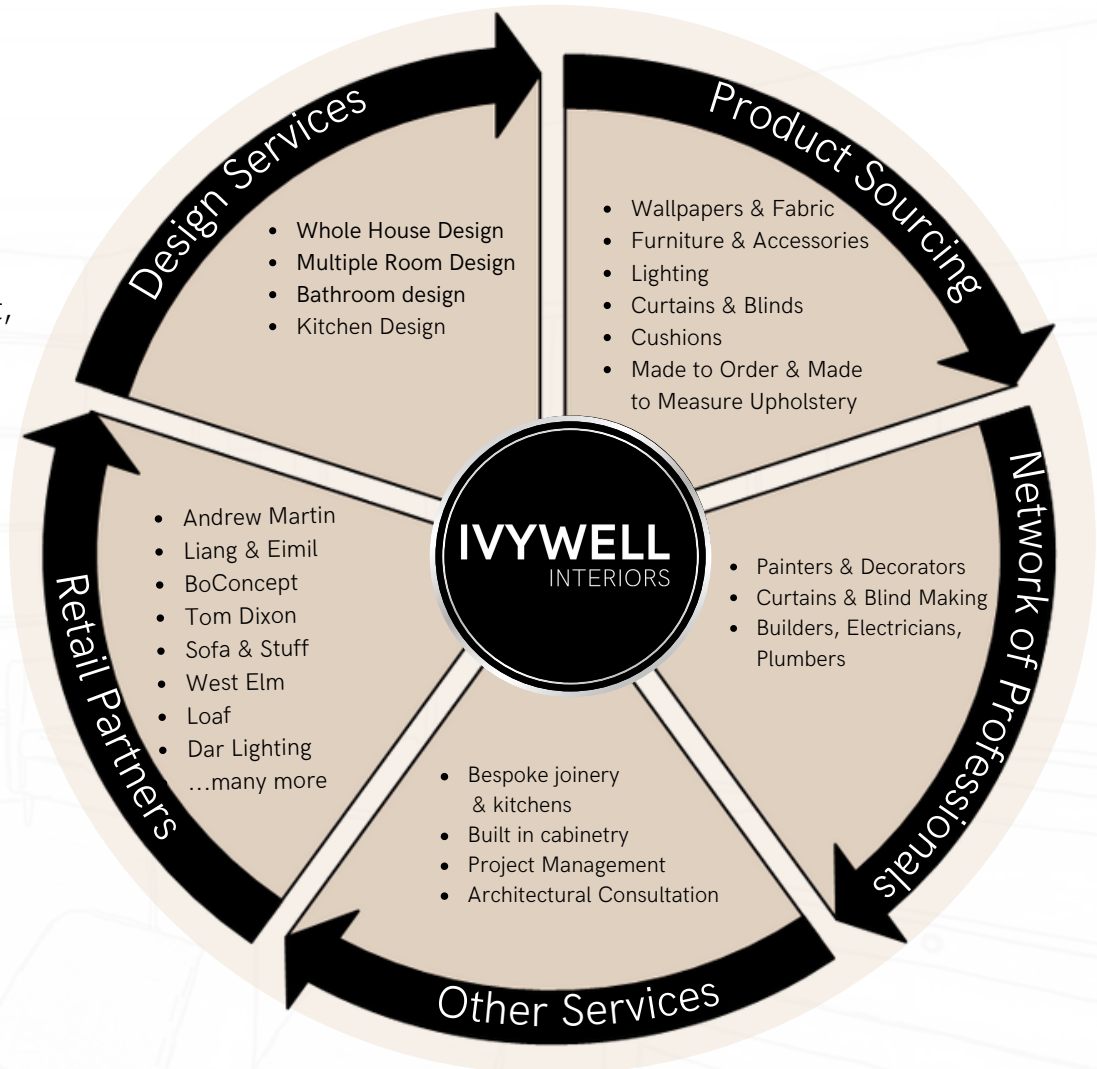
From complete room design services to product sourcing & supply or Made to Order & upholstery services, we create interior solutions to take the hassle out of your project.

We have heaps of experience in residential spaces and work with a trusted network of professionals to deliver your project from start to finish.



A COMPLETE SOLUTION

Flexible services to suit every stage of your project, whatever the scale.



WAYS OF WORKING

It's about you, not us.

We're here to support your vision and help you create an individual home style you love.

We are able to survey, create 2D floor plans, 3D sketches and suggest architectural solutions to make the most out of your space.

We don't leave you with a nice idea or shopping list. We can manage orders, arrange bespoke services, coordinate deliveries, and style your space to achieve a picture perfect finish.



Canowie Rd Project



Converted Barn Project

MEET THE TEAM

We're a close knit team with the inherent desire to realise your vision and deliver a cohesive home style you'll be delighted with.

We work on and review each project as a team to ensure all aspects, whether colour, spatial coherence or furniture sourcing, is carefully considered.



Kirsty comes with bags of experience in design and a formidable flair for quality and value. She's been sourcing and developing products for some of the biggest international brands out there which allows her to create unique home styles for our clients.



Megs has been managing creative projects for the past 10 years. Her hands-on approach with suppliers and contractors keeps every project moving forward to turn our clients' vision into a beautifully balanced space.



Elke is an award-winning architect and has designed 100s of residential projects, spotting the potential of a space and solving layout issues to make a room flow just right. Her projects are featured in [Ideal Home](#), [House Beautiful](#) and many other magazines.



Lauren completed her BA (Hons) Interior Design in 2021 in Bristol. As well as developing beautiful interior schemes, she also produces stunning 3D models that capture each key elements to help our clients visualise the final design.

CASE STUDY

Edwardian Renovation, Redland, Bristol

We helped the owners develop a colour scheme for the house and supported them with the process of making their new space feel unique during a complete renovation.

Services provided:

- Colour and style consultation
- Multiple Room Design
- Made to Order Curtains & Blinds
- Wallpaper supply
- Furniture, Accessories & Soft Furnishings source and supply



CASE STUDY | RESULTS



FEEDBACK FROM THE OWNER

"The team at Ivywell are such a pleasure to work with - highly creative, enthusiastic and full of great ideas. They have a very flexible approach and worked closely with me to bring my interiors dreams to life. They helped us with the colour scheme - making sure it had the dramatic flourishes we were looking for and ensuring it flowed around the house to give a cohesive feel. The textured wallpapers they suggested have added a luxury touch - not something I would have found on my own and I love the effect. Kirsty also helped us choose gorgeous curtains and blinds which we're delighted with. We've also chosen cabinets through their extensive product service. The team are lovely to work with - fun, creative and professional - and I'd highly recommend them".
Carla, Redland, Bristol Sept 22



CASE STUDY

Victorian Renovation & Extension, Henleaze

We helped the owners make their mark on their kitchen diner extension with a scheme inspired by nature and the sea.



COLOUR PALETTE

The owners were looking for a calm scheme with a touch of colour, inspired by the sea, enhanced with natural materials.

INSPIRATION PICTURES



STRONG
WHITE

OVAL ROOM
BLUE

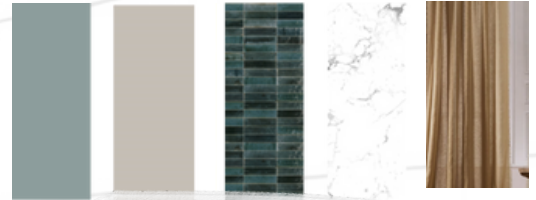
PURBECK
STONE

FIRST CONCEPT

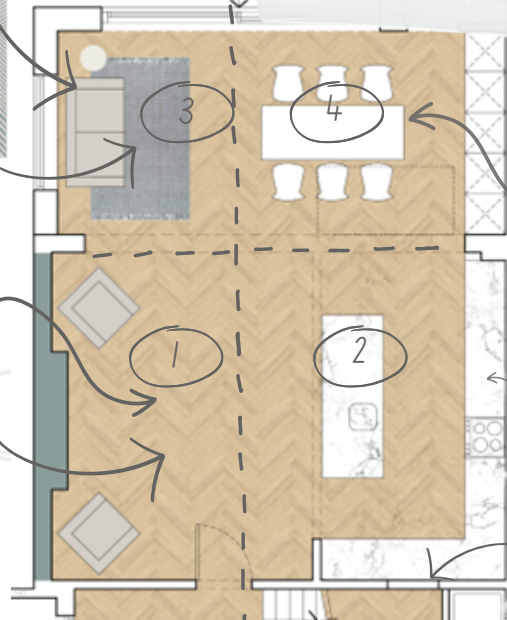
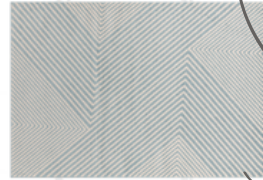
We divided the space into 4 distinct areas, linking each space through colour.

The wooden slats create a stunning backdrop for the snug area, adding texture and breaking up the long wall.

The large South facing window has been dressed with voiles that filter the sun without blocking the light.



STYLE:
NATURAL SCANDI WITH
SEASIDE INSPIRED COLOURS



The owners needed a little extra help to visualise the final space. We produced scaled concept sketches to review options and land on a final design. Each visual is produced specifically for each project, sometimes showing the overview or focussing on the details.



CASE STUDY

Victorian House Renovation, Bishopston

The owners hired us to support them with a complete house remodel and refurbishment. Each room was carefully planned and executed to a high standard while keeping to the overall budget.

Services provided:

- Whole House design
- Project Implementation support
- Main Contractor & Kitchen Joiner
- Made to order curtains
- Made to order upholstery
- Product Sourcing & Supply



DESIGN DEVELOPMENT

Master Loft Bedroom & bathroom

The room was extended into the eaves to provide more storage, built in wardrobes were added as well as new windows, curtains, upholstered headboard and new colour scheme. The adjoining master bathroom was refitted with a walk-in shower and large basin.



FINAL PICTURES

Master Loft Bedroom & bathroom



DESIGN DEVELOPMENT

Living Room & Dining Room

The living room wall was knocked through to allow light to flow into the dining room and create a large entertainment area. The chimney breast was removed in the dining area to allow for the table. We created a bespoke sofa and ottoman with a custom coffee table, added alcoves and re-used some existing furniture pieces to complete the space.



FINAL PICTURES

Living & Dining Room



DESIGN DEVELOPMENT

Kitchen

The owner didn't want to extend the kitchen to retain as much garden area as possible. Instead, we reconfigured the layout, relocating the peninsula to form a breakfast bar. A large window and sliding doors open the space to the outdoor, and the functional galley layout makes best use of the space.



FINAL PICTURES & FEEDBACK

"We have just had a whole house refurb and Ivywell's design service has been fantastic and exceeded our expectations. Ivywell managed the whole project very efficiently and ordered many items, including all bathroom fixtures. They ensured that we stayed within our budget and their service was excellent value for money. Regular visits from Megs helped to make a large project into a positive experience. We absolutely love our newly finished home and could not be happier with the beautifully designed interiors".
Preet, Bishopston, Nov '23



HOW TO GET STARTED

Tell us about your project using the form on our website. We will organise a call to discuss your expectations, timescale and budget to provide you with a quote tailored to your needs.

[Fill in a consultation request](#)

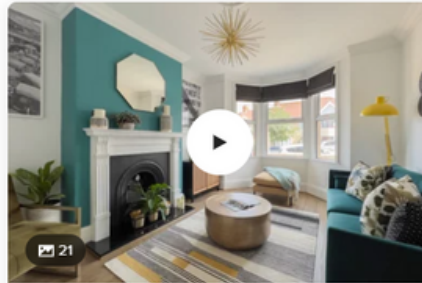
FIND US ON HOUZZ

Discover more of our projects and read our clients' feedback on [Houzz](#).



Whole House Remodel and Extension ...

📍 Bishopston, Bristol, Bristol City



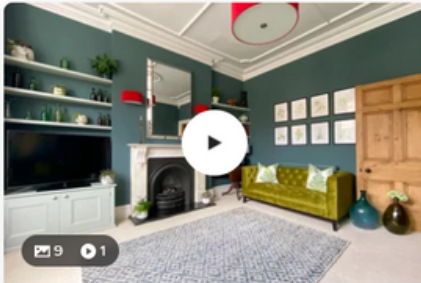
Eclectic Whole House Design, South Bristol ...

📍 Bristol, Bristol City



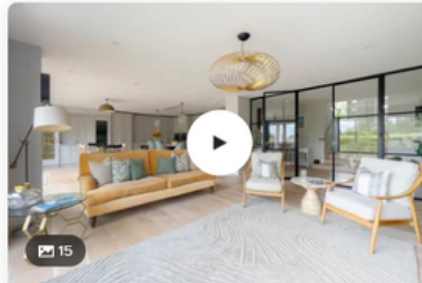
Cotswolds Converted Barn Remodel ...

📍 Stow-on-the-Wold, Gloucestershire



Living Room Design for a Victorian Terrace i... ...

📍 Redland, Bristol, Bristol City



Open Plan Design and Styling for a Contem... ...

📍 Bristol, Bristol City



Guest Bedroom Design with En-suite ...

📍 Stow-on-the-Wold, Gloucestershire

IVYWELL

INTERIORS



hello@ivywellinteriors.com

Megs: 07 904 040 276



Kirsty 07 432 313 342

Office: 0117 984 5314



[Ivywellinteriors.com](http://ivywellinteriors.com)