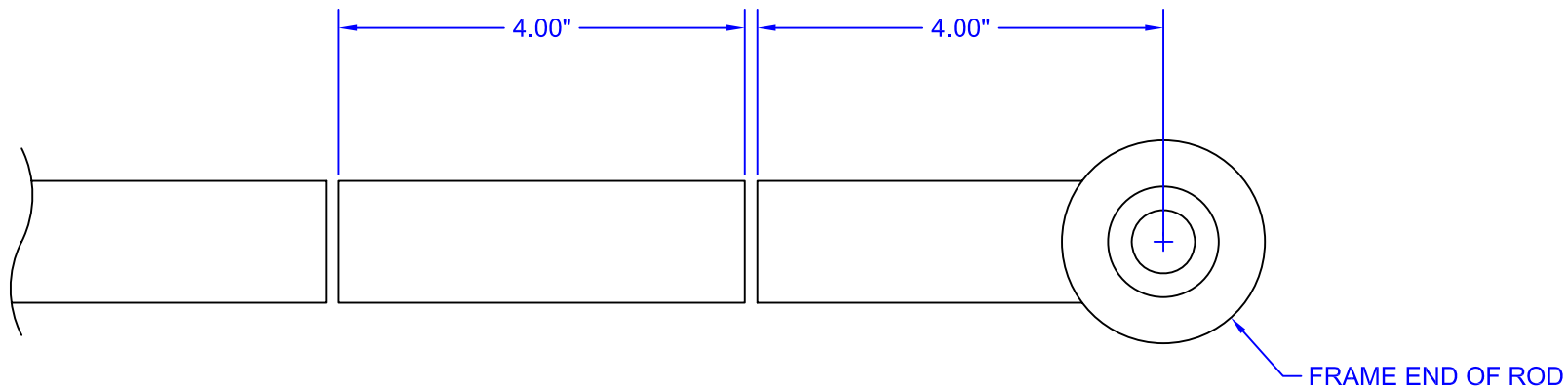


Welding consists of 4 plug welds and around both ends of the joint to the panhard rod itself.



Both front and rear rods are cut the same. Follow the directions above for proper fit. The piece removed should measure 4", the length lost from cutting is calculated in.

tip: measure the length of the panhards prior to cutting and before welding to ensure proper size. The final piece should be slightly shorter than stock but not more than a .25" shorter when fully collapsed.