

WTA



Installation Guide

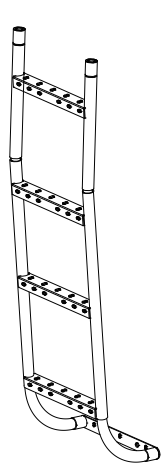


Sprinter Side Ladder

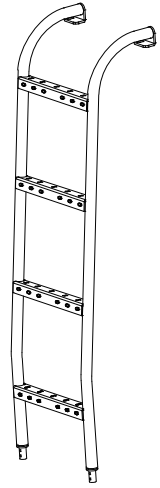
It is crucial to ensure that all WTA products are assembled and securely attached to your vehicle. Failure to do so may result in automobile accidents, posing a significant risk of bodily injury or even death to yourself and others. As the owner, it is your responsibility to properly assemble and secure WTA products, diligently inspecting the mounting points and attachments before use, and regularly checking for any signs of wear or damage.

To guarantee optimal safety, we strongly advise engaging the services of a professional installer for the installation of any aftermarket accessories to your vehicle. If you lack mechanical experience or are unfamiliar with the installation procedures, it is imperative to have the product installed by a qualified professional or individuals who possess the necessary expertise. Remember, the responsibility lies with you, and it must be taken seriously to ensure the safety of all individuals involved.

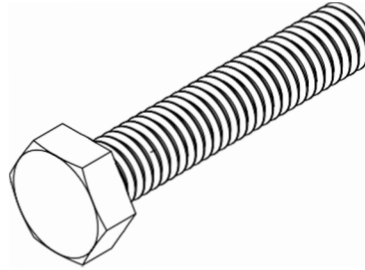
PACKAGE CONTENTS



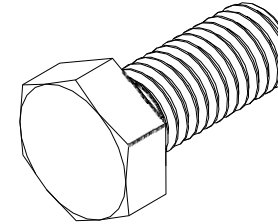
LADDER BOTTOM
QTY-1



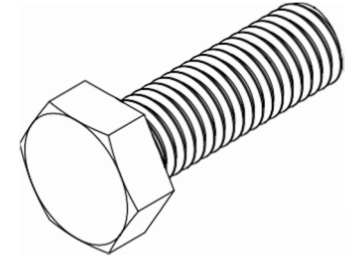
LADDER TOP
QTY-1



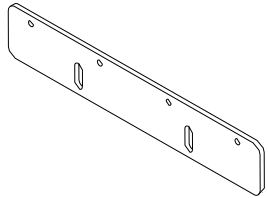
M6-25 HEXAGON HEAD
SCREW QTY-4



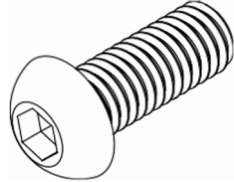
M10-22 HEXAGON HEAD SCREW
QTY-2



M10-30 HEXAGON HEAD SCREW
QTY-2



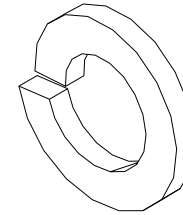
MOUNT PLATE
QTY-1



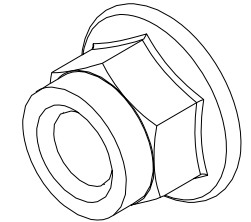
M6-16 BUTTON HEAD SCREW
QTY-4



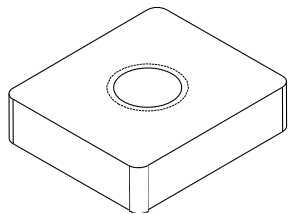
M6-25 HEXAGON HEAD
SCREW QTY-10



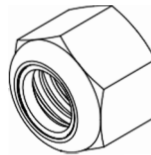
M10 SPRING LOCK WASHER
QTY-2



M10 NYLOCK NUT
QTY-2



RAIL NUT
QTY-2



M6-25 HEXAGON HEAD
SCREW QTY-5



M10 FLAT WASHER
QTY-4

LET'S GET STARTED!

- 1 PLACE THE LADDER HALVES FRONT SIDE DOWN, INSERT THE COUPLERS INTO ONE HALF (SEE FIGURE 1), AND TIGHTEN DOWN USING THE M6-16 SCREWS.
- 2 SLIDE THE OTHER LADDER HALF ONTO THE COUPLERS AND TIGHTEN DOWN. **NOTE- IF DESIRED YOU CAN USE BLUE LOCTITE ON THE SCREWS.**

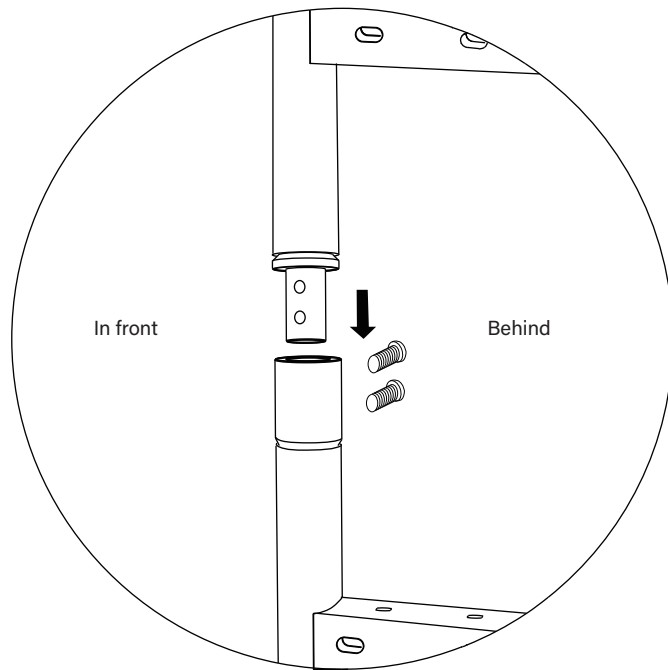
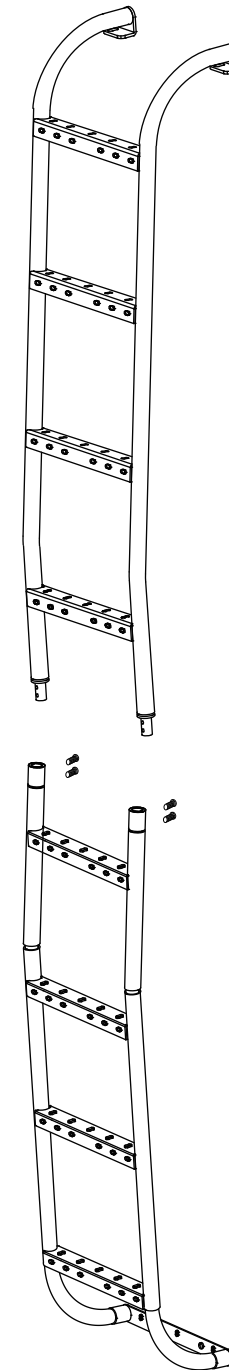


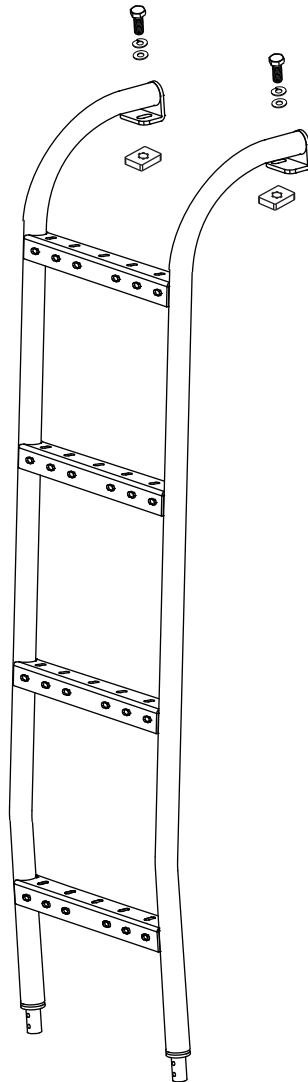
FIGURE 1



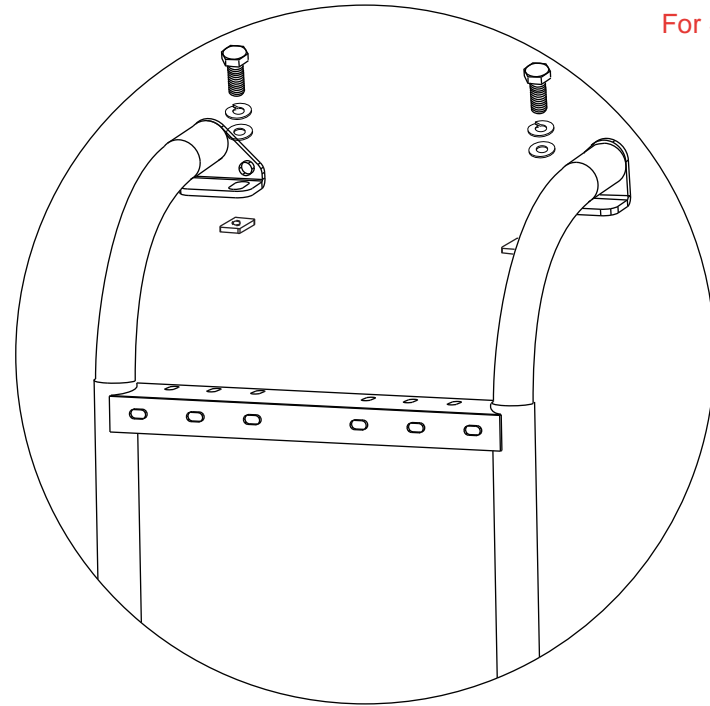
3. NEXT, SLIDE THE TWO (2) RAIL NUTS INTO THE ROOF RAIL ON YOUR VAN. *NOTE-* IF YOU'VE ALREADY INSTALLED A ROOF RACK, THIS MAY BE TIME CONSUMING.

4. NOW POSITION THE LADDER ON THE VAN, HANGING IT ON THE ROOF RAIL. LOOSELY SCREW THE TOP OF THE LADDER DOWN TO THE ROOF RAIL USING THE M10-22 SCREWS AND THE M10 SPRING LOCK WASHERS AND M10 FLAT WASHERS JUST ENOUGH THAT IT IS SNUG (SEE FIGURE 3)

NOTE- WE LIKE TO PLACE THE LADDER AS CLOSE TO THE REAR WHEEL WELL AS WE CAN. SEE IMAGE BELOW.

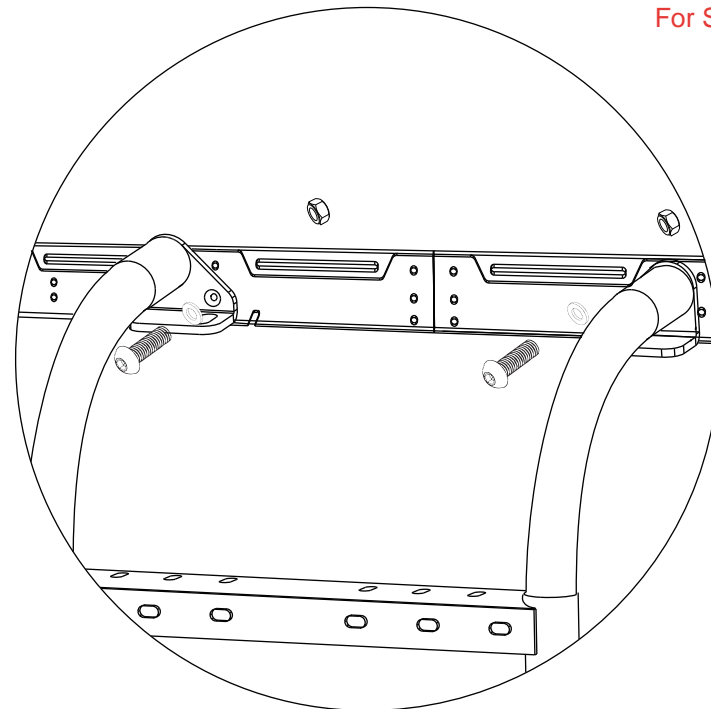


For Stealth Roof Rack



Method1

For Strata Roof Rack



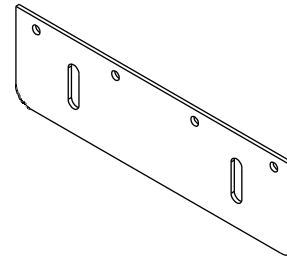
Method2

5. TAKE THE MOUNT PLATE (SEE RIGHT) AND LOOSELY ATTACH THEM TO THE BOTTOM OF THE LADDER USING THE M10-30 SCREWS, M10 FLAT WASHERS, AND M10 NYLOCK NUTS.

NOTE- MAKE SURE THAT THE LADDER IS STRAIGHT UP AND DOWN.

6. Line up the support plate with the ladder and drill 5 holes with $\frac{1}{4}$ inches drill bit.
7. Support the plate on to the pinch weld with M6 bolt and nuts.
8. Support the ladder to the support plate using M10-30 bolts and nuts.

MOUNT PLATE



Only use this plate with Stealth Rack, for the Strata Rack attach the bottom of the ladder directly to the pinch weld.

