



Diode Laser Hair Removal System

More Choice, Better Experience!



About our machine:

3 powers to be selected: 800W/1000W/1200W;

2 super light spot sizes to be selected: 12×16mm² and 12×20mm²;

Light condition and treatment parameter can be displayed on the color LCD screen of the handle;

Multi-wavelengths can be selected: 808nm/755nm/1064nm/3 in 1;

Sapphire freezing point refrigeration, protect the skin continuously in great effective way;

German pump, the water velocity is faster than 4.2L/min;

Target bar is imported from American Coherent, with the total shoots of 30 million;

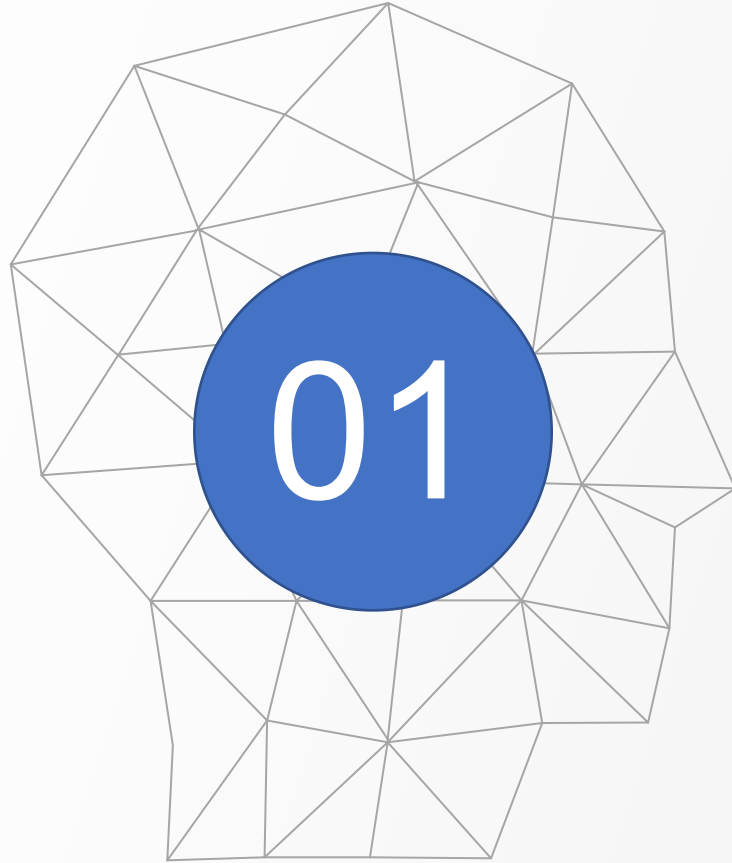
12.1 inches resistive touch screen, perfect interactive experience;

Super strong water cooling module with 6 thermoelectron chip (TEC) for refrigeration, the water temperature does not exceed 30°C;

Continuous working time for 8 hours;

SHR laser hair removal, painless, fast and permanent effect.





Product Introduction

- ✓ Equipped with comprehensive hair removal system of multiple wavelengths: 808nm/755nm/1064nm/3 in 1, suitable for people with various skin and hair colors;
- ✓ The operation interface version, which can be operated with personalized and intelligent recommended parameters, thus the operation threshold of clinical hair removal has been lowered;
- ✓ Meanwhile, during the treatment process, this unique freezing technology with the contact of sapphire can effectively cool and protect the customer's skin, achieving a painless, fast and permanent hair removal effect.



➤ Outlook Design

- ✓ 12.1 inches resistive touch screen, achieving better visual perception;
- ✓ Humanized human-computer interaction interface, perfect interaction experience;
- ✓ Aluminum alloy brushed metal panel, metallic texture;
- ✓ Dual-axis flip screen design, multi-angle adjustment;
- ✓ Metal plate chassis, environmental friendly and durable;
- ✓ The main contour is designed in medical white, the cover slab is in dark gray, which is very good looking.
- ✓ Aluminum alloy handrails, easy to move;
- ✓ Aluminum alloy handle bracket, easy to install;
- ✓ The handle bracket and the handle are completely fit, easy to take and use;
- ✓ Japan imported emergency switch and key switch, beautiful and durable;
- ✓ Knob type handle connection, easy to connect and stable to hold.
- ✓ Handle consists of silicone tube, which is light and soft, durable;
- ✓ The handle mould is newly opened with a display screen, which appeals to the mainstream fashion;
- ✓ Medical standard casters, sturdy and durable. 4 universal wheels (the front two with self-locking function), which can be moved at any angle.

➤ Outlook Display





➤ Outlook Design Description

- ✓ Hollow pattern design on the side and back cover, the function of the hollow is to dissipate heat, which is practical and beautiful;
- ✓ The upper two fan holes are the cooling fans of the semiconductor water cooling module;
- ✓ The four fan holes below are the cooling fans of the condenser;
- ✓ The power cord adopts aerial plug connector, which is firmly connected and not easy to fall off;
- ✓ The door interlock and pedal adopt high-end aviation connector, which is beautiful and durable;
- ✓ Imported CPC faucets are used for the water filling and overflow, which is beautiful and durable;

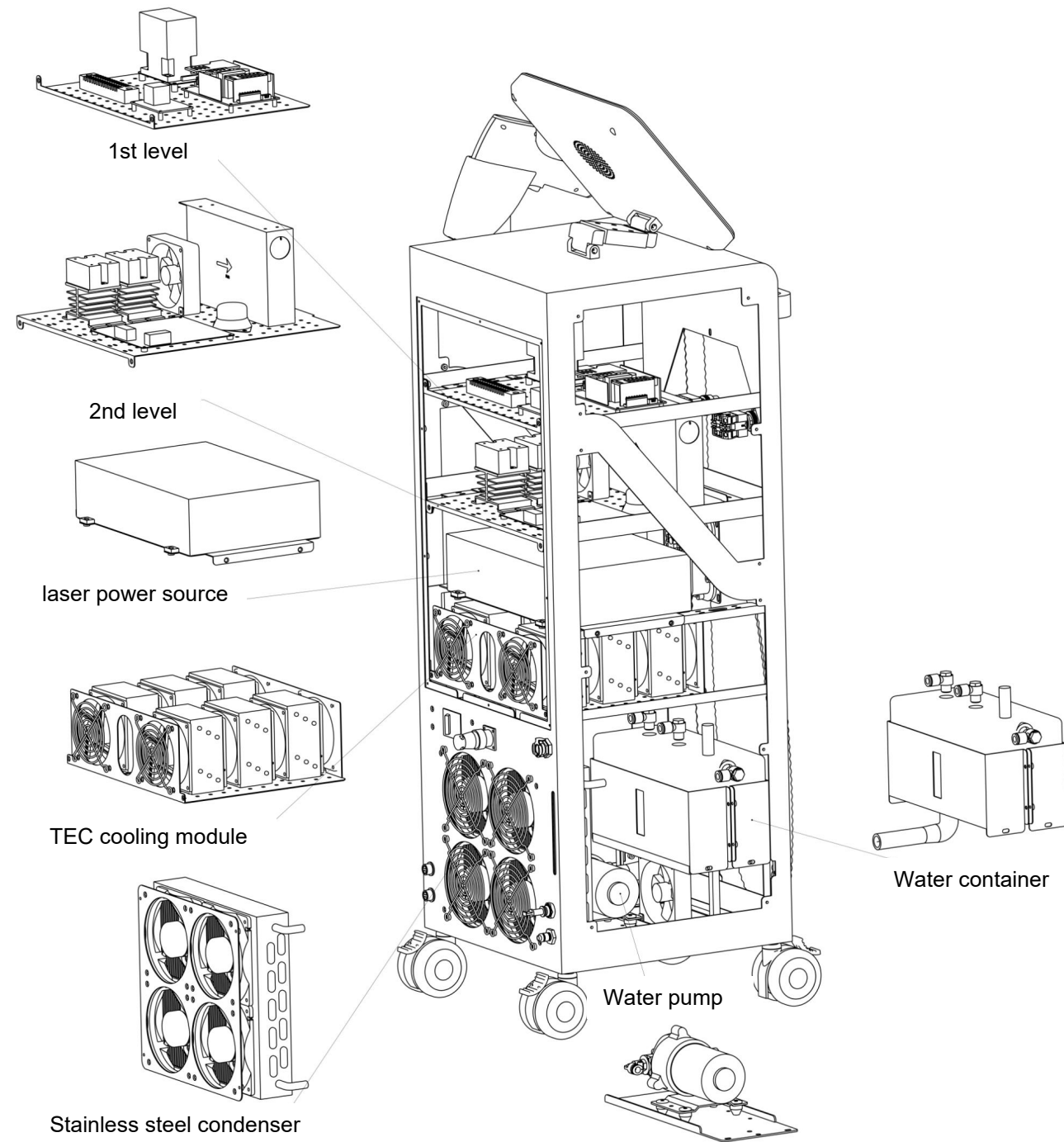


Advantage Analysis



Water and Electricity Separation Design, Safe and Reliable

- ✓ There is an all-metal frame with integrated design inside the sheet metal shell;
- ✓ Water and electricity separation design, safer and more stable;
- ✓ Modular design, convenient for assembly and after-sales maintenance;



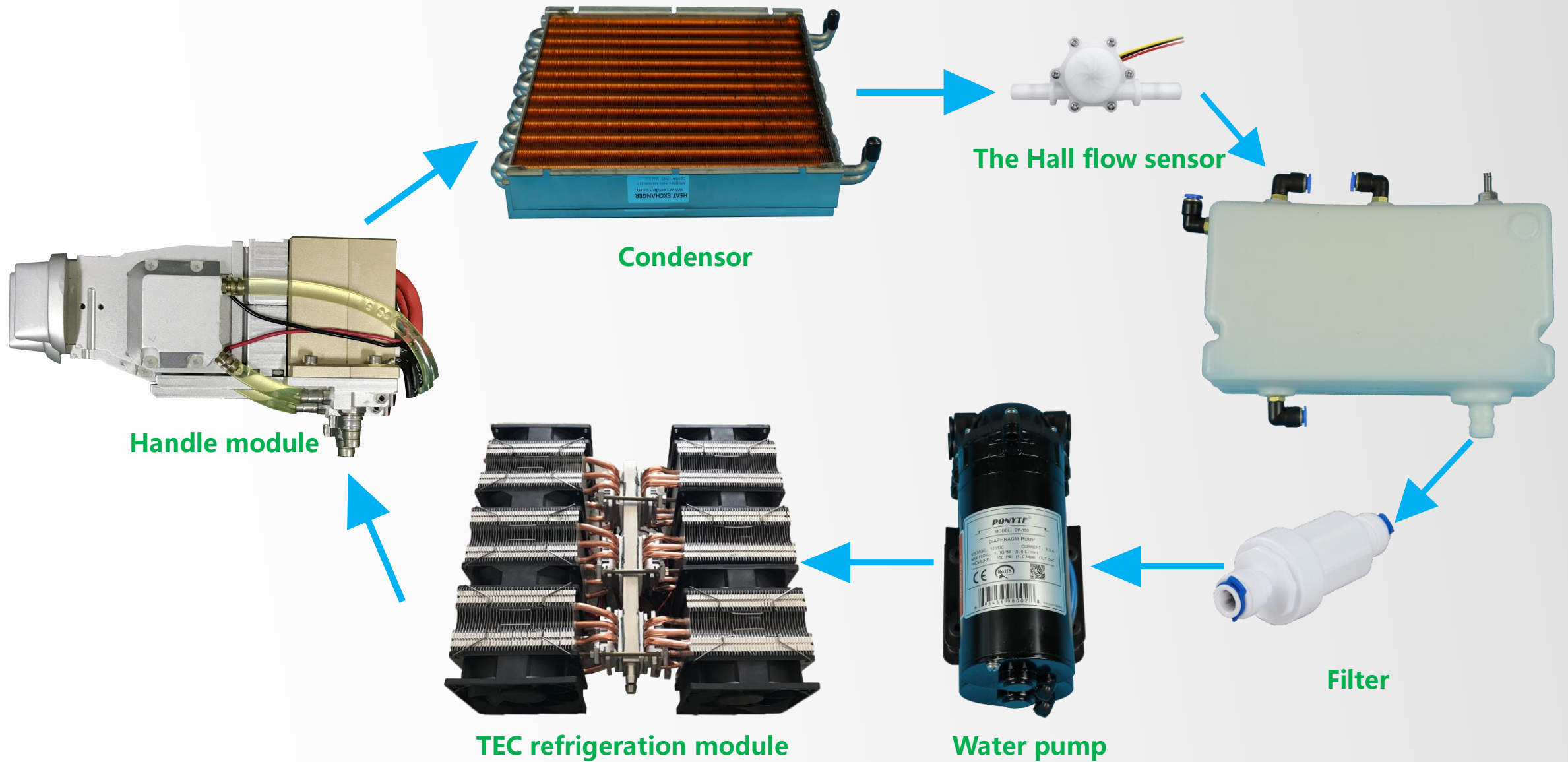
➤ Professional Pulse Constant Current Laser Power Supply

- ✓ Professional pulse constant current laser power supply;
- ✓ The maximum current is 100A, and the maximum output power is 1500W, providing sufficient energy for the laser;
- ✓ It has a multi-level constant current power system and high-precision overshoot suppression function; minimizes the impact on the laser and prolongs the service life of the laser.

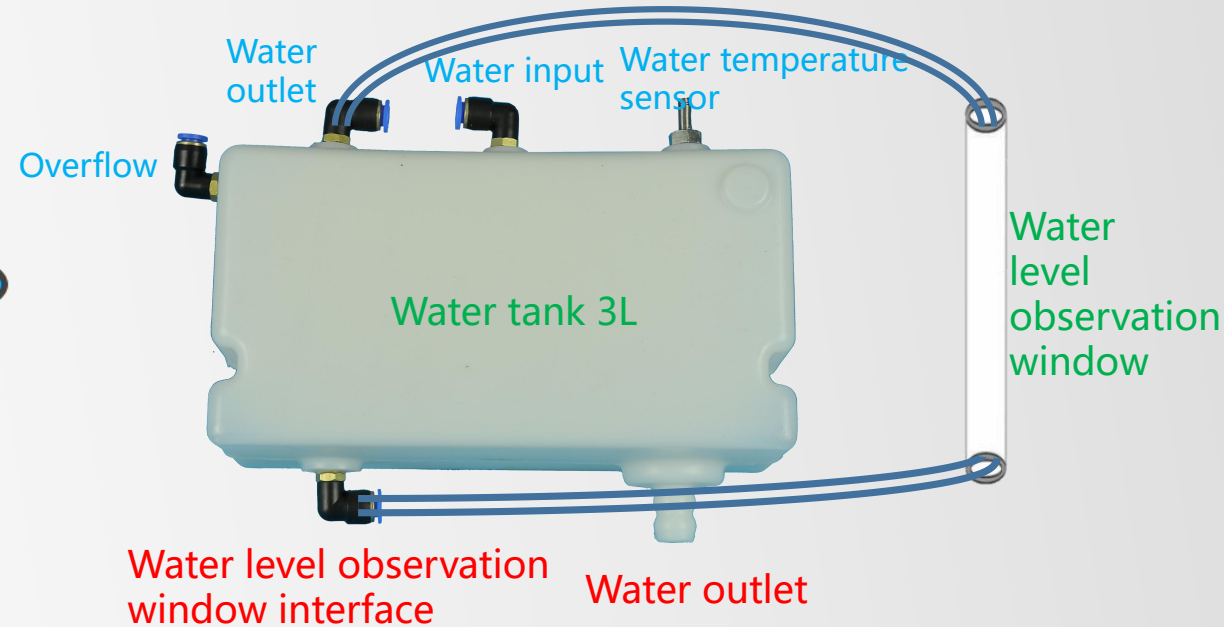
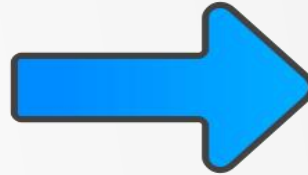


● 提高脈衝能量作用深度，使毛囊吸收更多能量，提高作用效率

Strong Water Circulation Cooling System to Ensure 8 Hours of Continuous Working Time



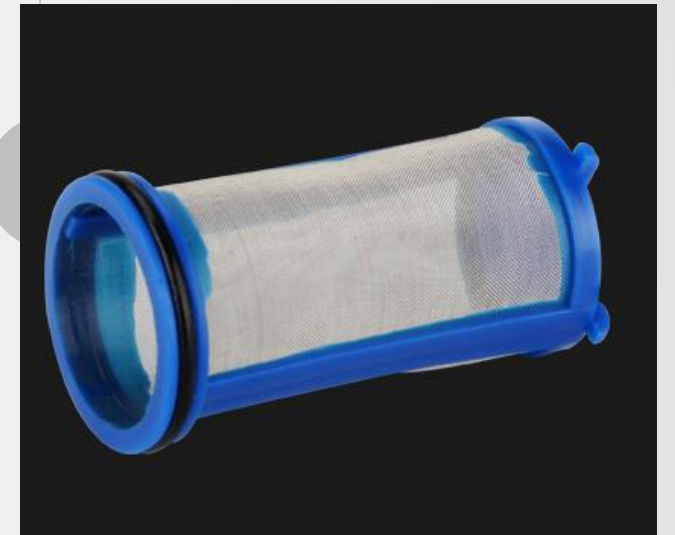
➤ Water Level Observation Window, Water Level in the Tank Can be Accurately Displayed



- The problem we have before: The water level of the observation window will drop after the whole machine is running.
- After upgradation: The water outlet and the water level observation window interface are separated;
The water level of observation window will not drop after the whole machine is running, thus the water level in the tank will be accurately displayed!

➤ High-precision Quick-plug Filter

- ✓ Function: filter impurity particles, avoid blockage of the laser, and extend the service life of the laser;
- ✓ The interface is a 3/9 inch(9.5mm) quick coupler, which is small in size and easy to disassemble and assemble;
- ✓ Built-in stainless steel filter screen with a filtering accuracy of 100um, which can effectively filter out impurity particles;
- ✓ The filter can be used repeatedly, just take out the filter and rinse with water;

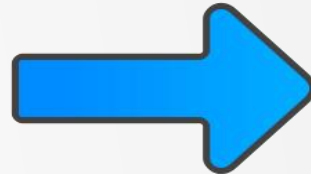


➤ : German Imported Water Pump with Large Water Flow

- ✓ Large water flow: the water velocity is not less than 4.2L/min;
- ✓ Low noise: almost no noise, quiet operation;



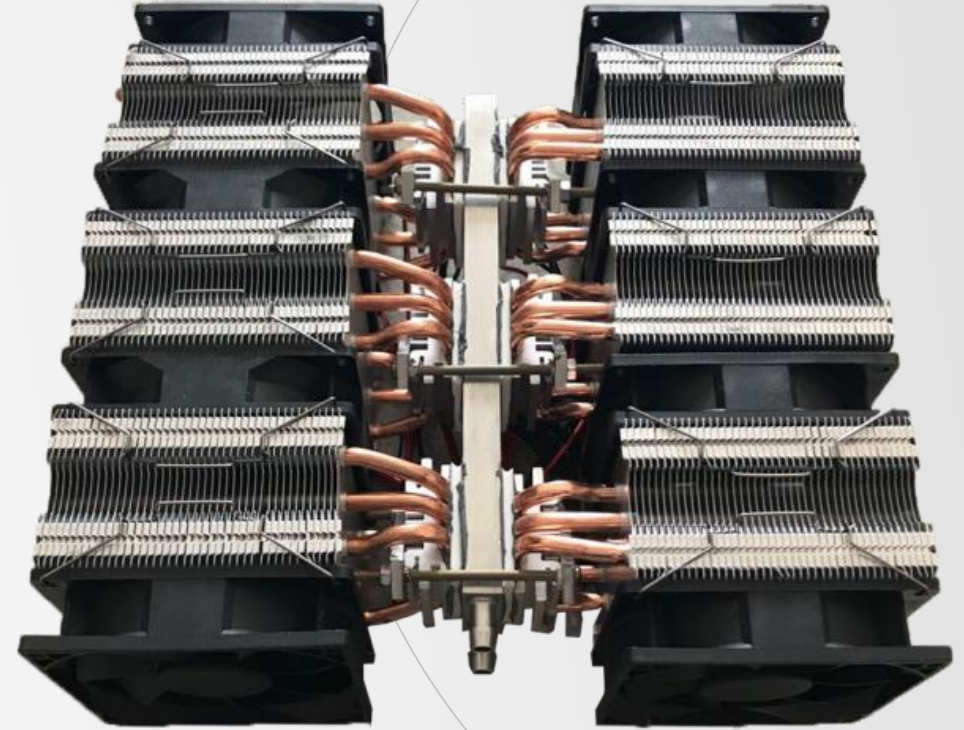
SDL-B American Water Pump
Pressure: 100PSI



SDL-K German Water Pump
Pressure: 150PSI

➤ Super Strong Water Cooling Module with 6 Thermoelectron Chip (TEC) for Refrigeration, the Water Temperature does not Exceed 30°C

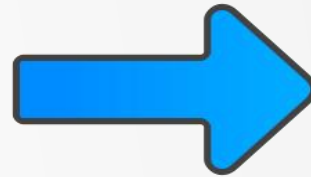
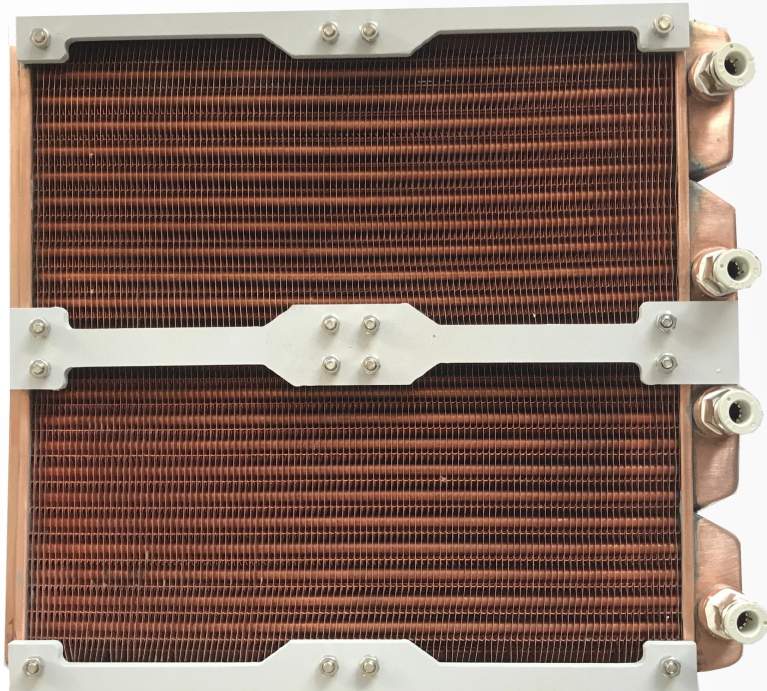
- ✓ Super strong water cooling module with 6 thermoelectron chip (TEC) for refrigeration, using six 12V/6A high-end TEC cooling plates, cooling power up to 420W;
- ✓ Low noise, environmental friendly, fluorine-free and harmless;
- ✓ Easy to form an automatic control system, rapid cooling;
- ✓ In the case of high-energy continuous light output, the water temperature can be maintained at no more than 30°C; (the suitable working environment for the target bar module is 25°C-35°C), which can effectively cool the laser and prolong its service life.



TEC cooling module

➤ : Condenser, High Heat Dissipation Efficiency

- ✓ Copper fin type heat sink, plus 4 fans for heat dissipation, higher efficiency;
- ✓ Built-in stainless steel pipe waterway, no rust or precipitation, reducing the risk of waterway blockage.



Copper pipes, which can cause copper rust to precipitate and block waterways after using for a long time.

➤ : Humanized Handle Design, Comfortable for Operator

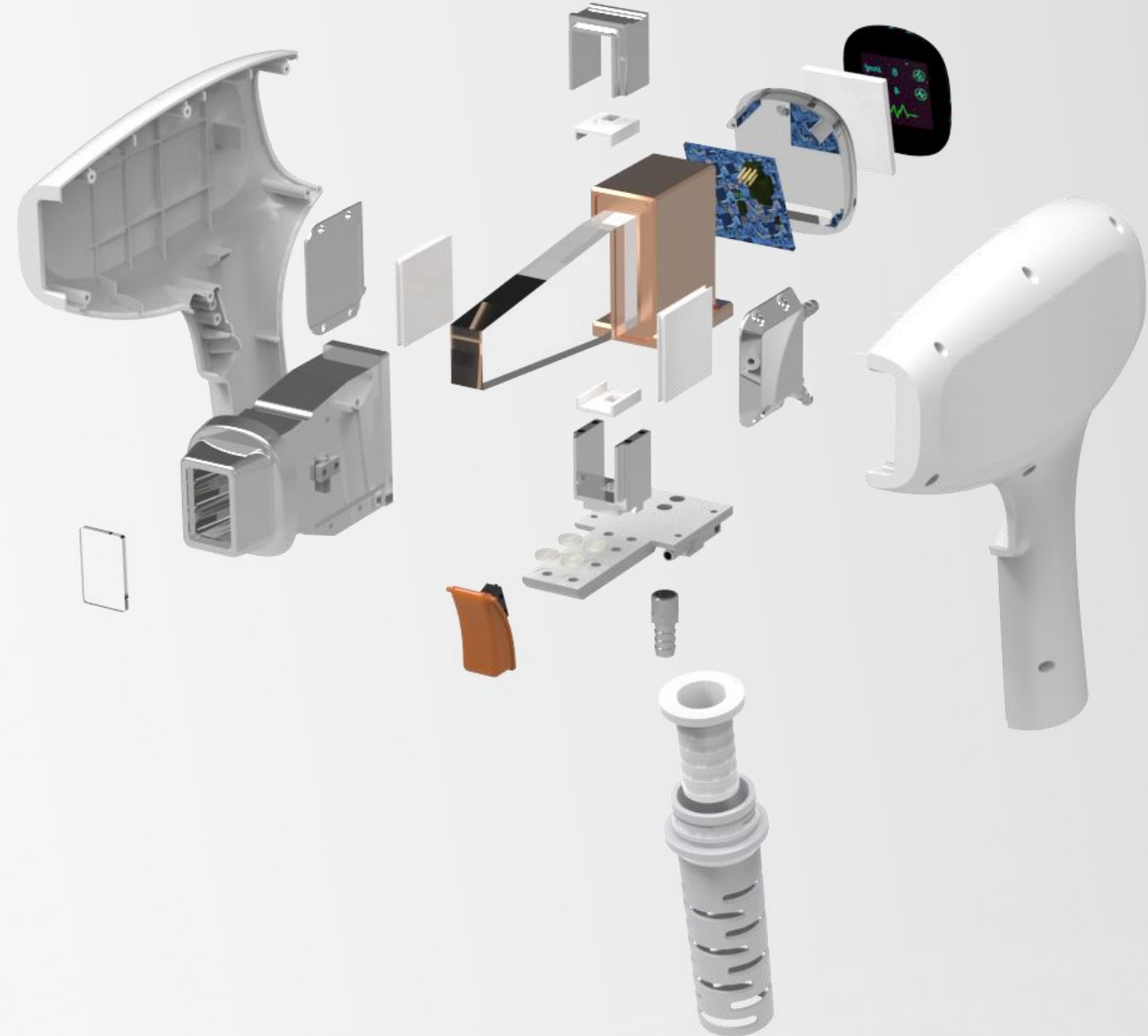


- ✓ The handle adopts ergonomic design and makes operator feels comfortable;
- ✓ Handle is equipped with silicone sheath to prevent the silicone tube from falling off;
- ✓ The handle is equipped with a display screen, which is fashionable and full of high technology.

➤ : Humanized Handle Design, Comfortable for Operator

- ✓ Adopt American Coherent target bar, long life span with 30 million shoots;
- ✓ Two high-end TEC semiconductors make the cooling process quickly, depilate at **freezing points**, and reduce pain;
- ✓ Aluminum alloy treatment head + sapphire crystal to enhance the treatment experience;
- ✓ There is a control panel in the handle, which could:

(1) achieve automatic recognition of the handle and identify the wavelength type and power;
(2) be matched with any host, and ensure the accurate light energy.



➤ The Handle is Equipped with a Display Screen, which is Fashionable

- ✓ The color LCD screen of the handle displays the light output condition and treatment parameters;
- ✓ The handle display adopts the design of aluminum alloy base + acrylic panel, which has a sense of metal texture and high technology.



➤ The Handle is Equipped with a Display Screen, which is Fashionable

- ✓ The color LCD screen of the handle displays the light output condition and treatment parameters;
- ✓ The treatment information can be easily obtained through the handle display screen, allowing operator to focus more on treatment.



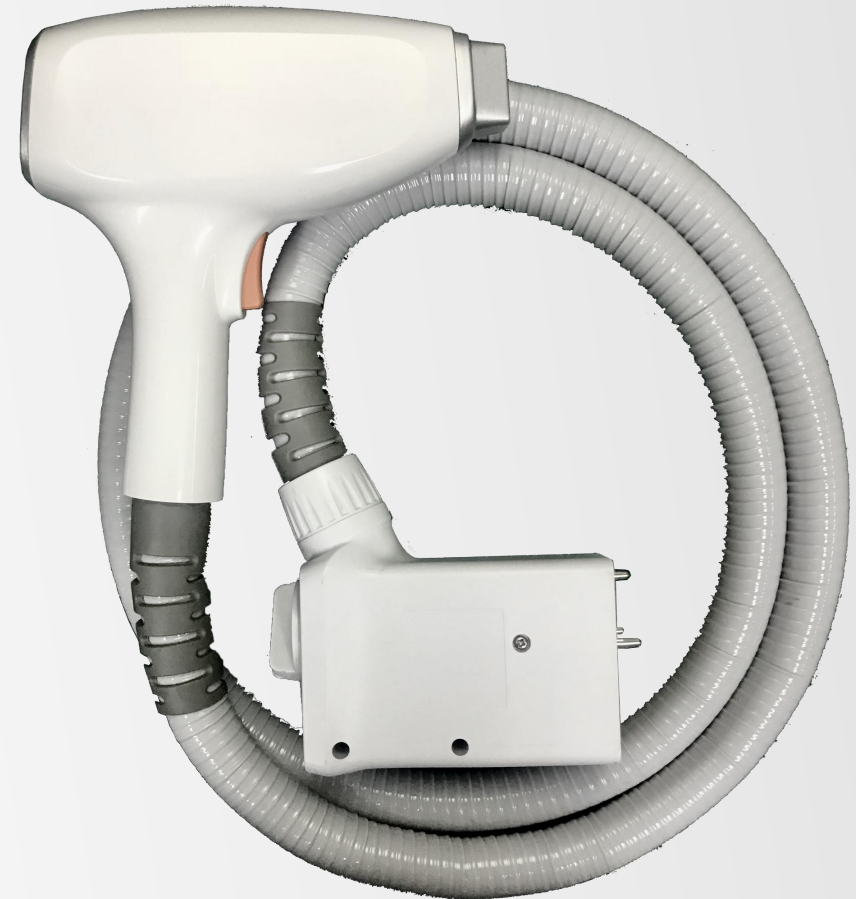
Boot Animation



Main Interface

✦ : K-type Knob Handle Connector, Easy to Operate, Solid Connection

- ✓ Designed with knob connector, convenient for disassembly and assembly;
- ✓ After the handle is screwed in place, the knob points to the 2 o'clock direction!

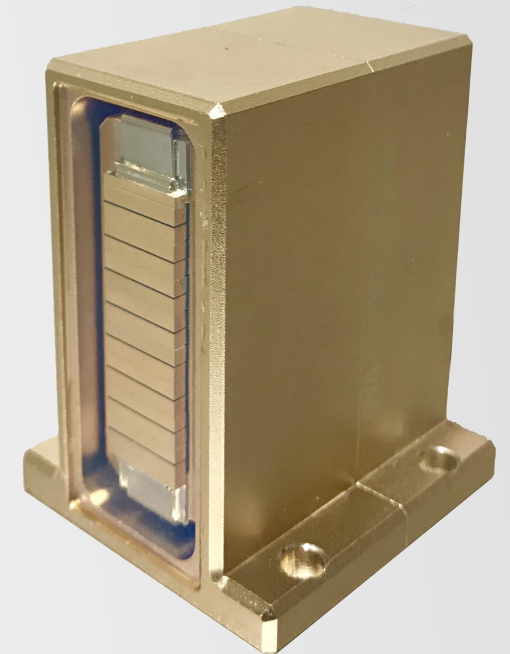
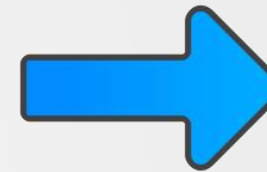


➤ : American Coherent Imported Target Strip

- ✓ Adopt American Coherent target bar, long life span, 50 million shoots;
- ✓ Long service life: maximum power, 20,000 hours of continuous light emission without energy attenuation;
- ✓ Good spot uniformity, more comfortable for clinical use;
- ✓ Fully encapsulated with gold tin, high stability;
- ✓ Macro-channel heat dissipation structure, easy for water cooling;
- ✓ Fully sealed with nitrogen gas, anti-reflection coating, strong environmental adaptability.

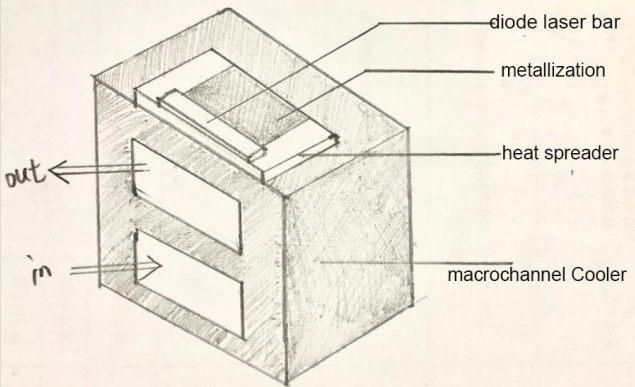
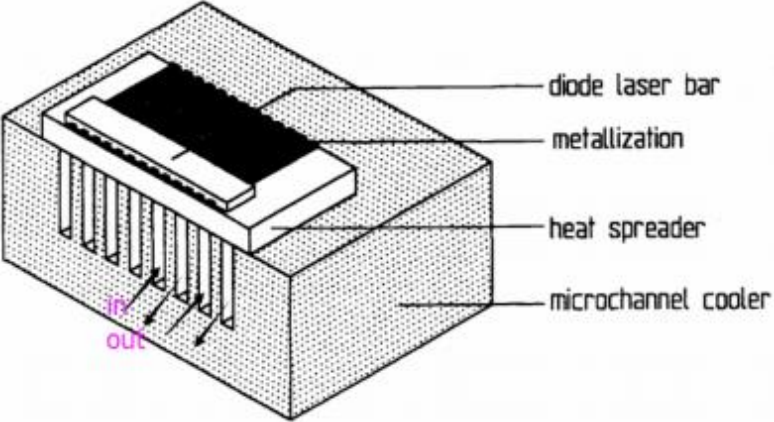



Other product
Encapsulated with Indium,
target bar is exposed



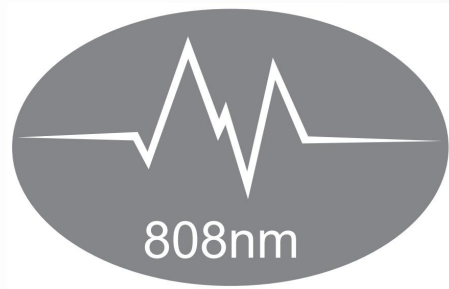
SDL-K laser module
Encapsulated with gold tin, target bar
is sealed with nitrogen filling

➤ : Laser—Macrochannel Encapsulation

Types	✓ macrochannel laser (ours)	microchannel laser	non-channel "chip" laser
Indication	 <p>A 3D schematic diagram of a macrochannel laser encapsulation. It shows a diode laser bar on top of a metallization layer, which is on a heat spreader. Below the heat spreader is a macrochannel cooler with two large rectangular channels. Arrows labeled 'in' and 'out' indicate the flow of coolant through these channels.</p>	 <p>A 3D schematic diagram of a microchannel laser encapsulation. It shows a diode laser bar on top of a metallization layer, which is on a heat spreader. Below the heat spreader is a microchannel cooler with many thin, vertical channels. Arrows labeled 'in' and 'out' indicate the flow of coolant through these channels.</p>	 <p>A photograph of a non-channel chip laser. It shows a small, square chip with a blue laser beam being emitted from the center. The chip is mounted on a metal base.</p>
Advantage	<ul style="list-style-type: none"> ① Macro channel helps heat dissipation because of a thicker waterway; ② Encapsulated with target strip, high energy density and easy to reshape; ③ The process is simple, the heat dissipation area is relatively small, the water resistance is relatively small, and a good heat dissipation effect can be achieved at an appropriate water flow rate (not less than 3L/min); ④ Appeal to the mainstream market. 	<ul style="list-style-type: none"> ① Micro-channel heat dissipation, there are many thinner waterways; ② Encapsulated with target strip, high energy density and easy to reshape; ③ The process is complex, the heat dissipation area is large, and the heat dissipation effect is good, but the water resistance is large, and the water quality is highly required. 	<ul style="list-style-type: none"> ① No channel, a thicker waterway; ② Encapsulated with chip, low energy density; ③ Similar to macro channel heat dissipation.

➤ Multi-wavelengths: 808nm/755nm/1064nm/3 in 1

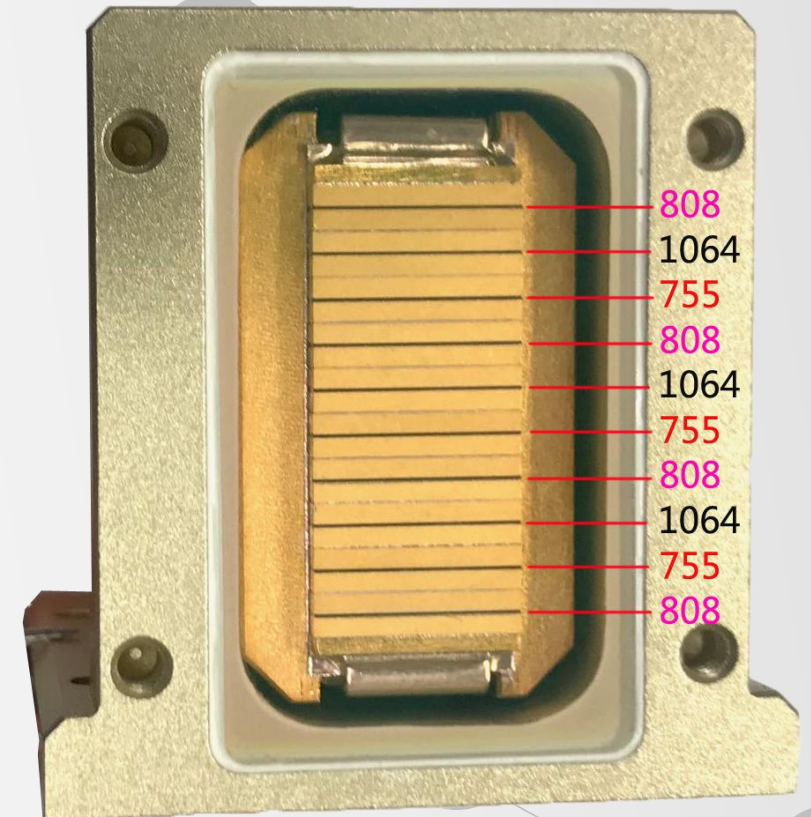
- ✓ Multi-wavelengths: 808nm/755nm/1064nm/3 in 1
- ✓ A variety of wavelengths are available, suitable for people with various skins and hairs.



Note:

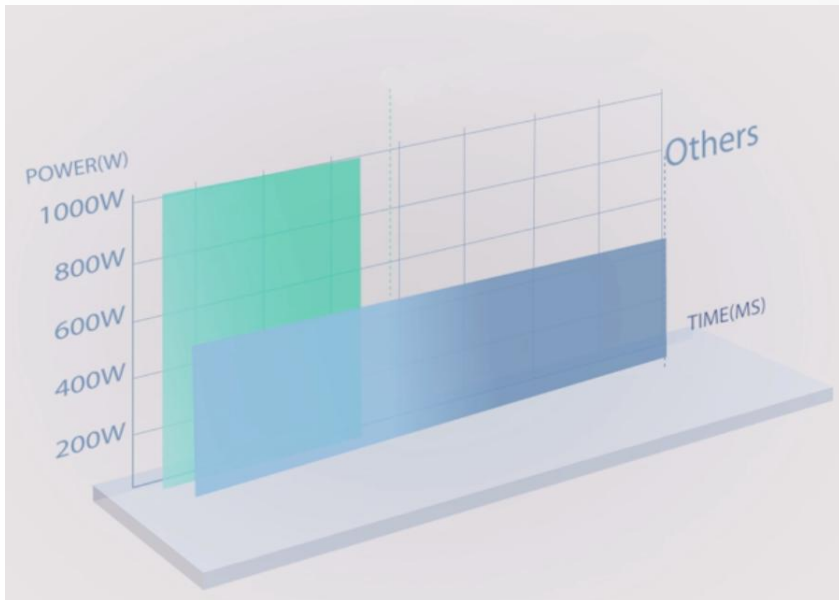
The 3 in 1 laser does not have selective light emission.
Three wavelengths emit light at the same time after it turns on!

3 in 1 laser wavelength
arrangement sequence:



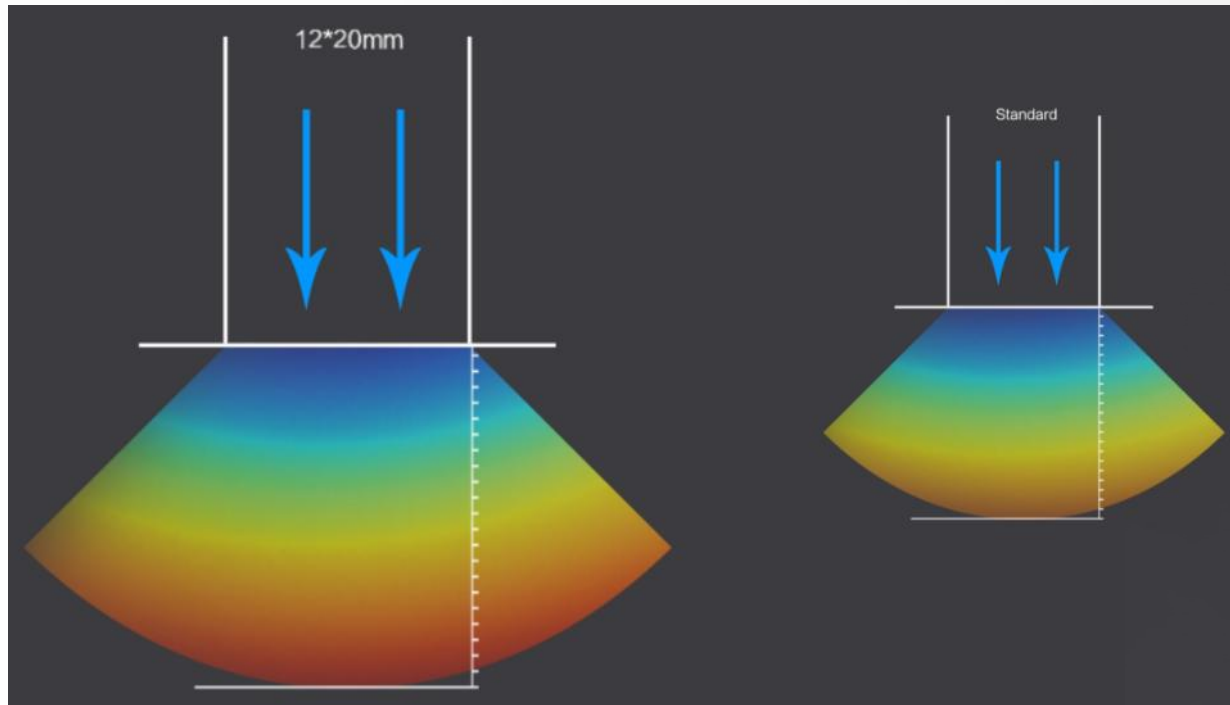
➤ Multiple Power Options: 800W/1000W/1200W

- ✓ Multiple power options: 800W/1000W/1200W
- ✓ Higher power, narrow pulse width, improve experience and hair removal effect
- ✓ Fast, comfortable and effective



➤ Super Light Spot Size: 12*16mm² & 12*20mm²

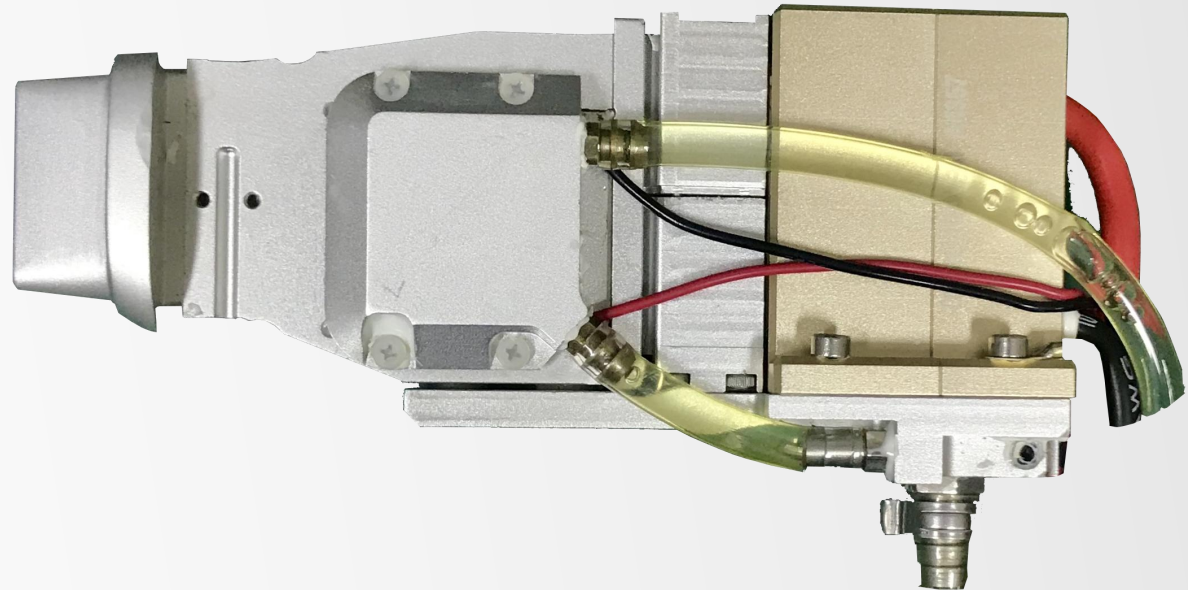
- ✓ Larger light spots, strengthen the depth of energy action, make hair follicles absorb more energy and improve the efficiency of action



Note: 12*20mm² light spot is only available for the 1200W module

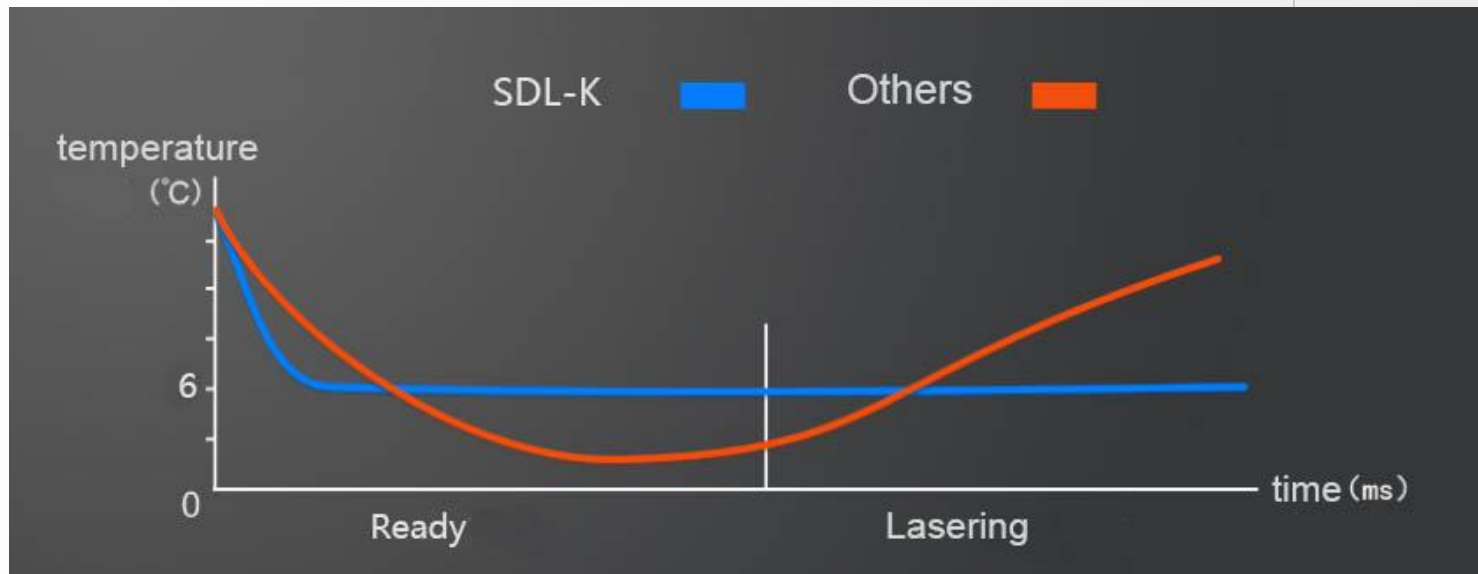
➤ Sapphire Laser Refrigeration, Super Continuous Protection of the Epidermis

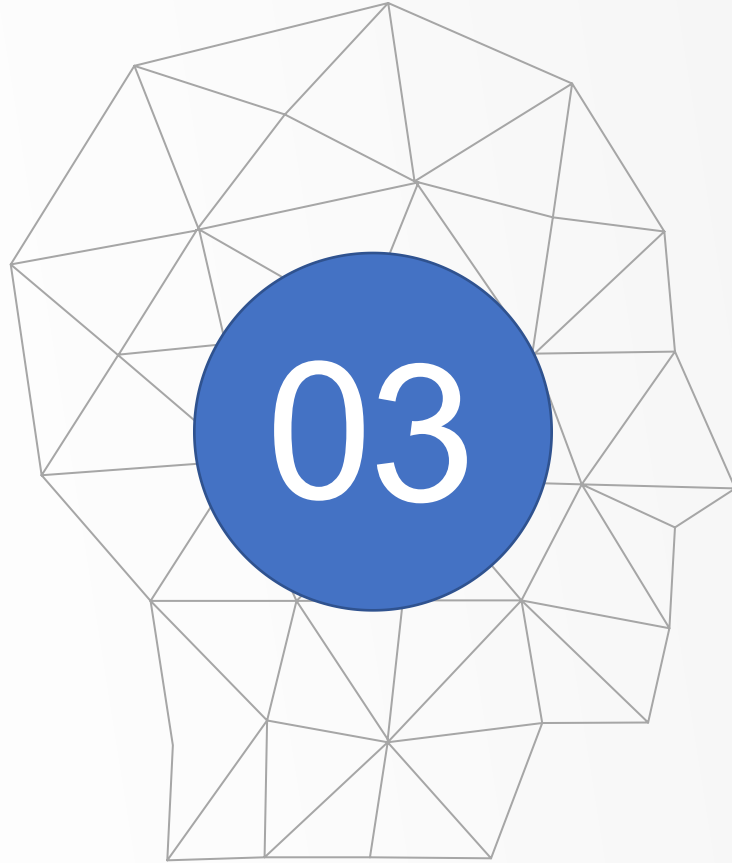
- ✓ The handle has a high-speed microprocessor inside, and it is equipped with a high-precision temperature probe. The high-efficiency PID algorithm is used to accurately control the temperature of the sapphire crystal. The temperature of the treatment head can be cooled at a constant temperature of $-4^{\circ}\text{C}\sim 10^{\circ}\text{C}$, which deeply protects the epidermis;
- ✓ The handle is equipped with two high-end TEC cooling plates, which can make the machine cool down quickly.



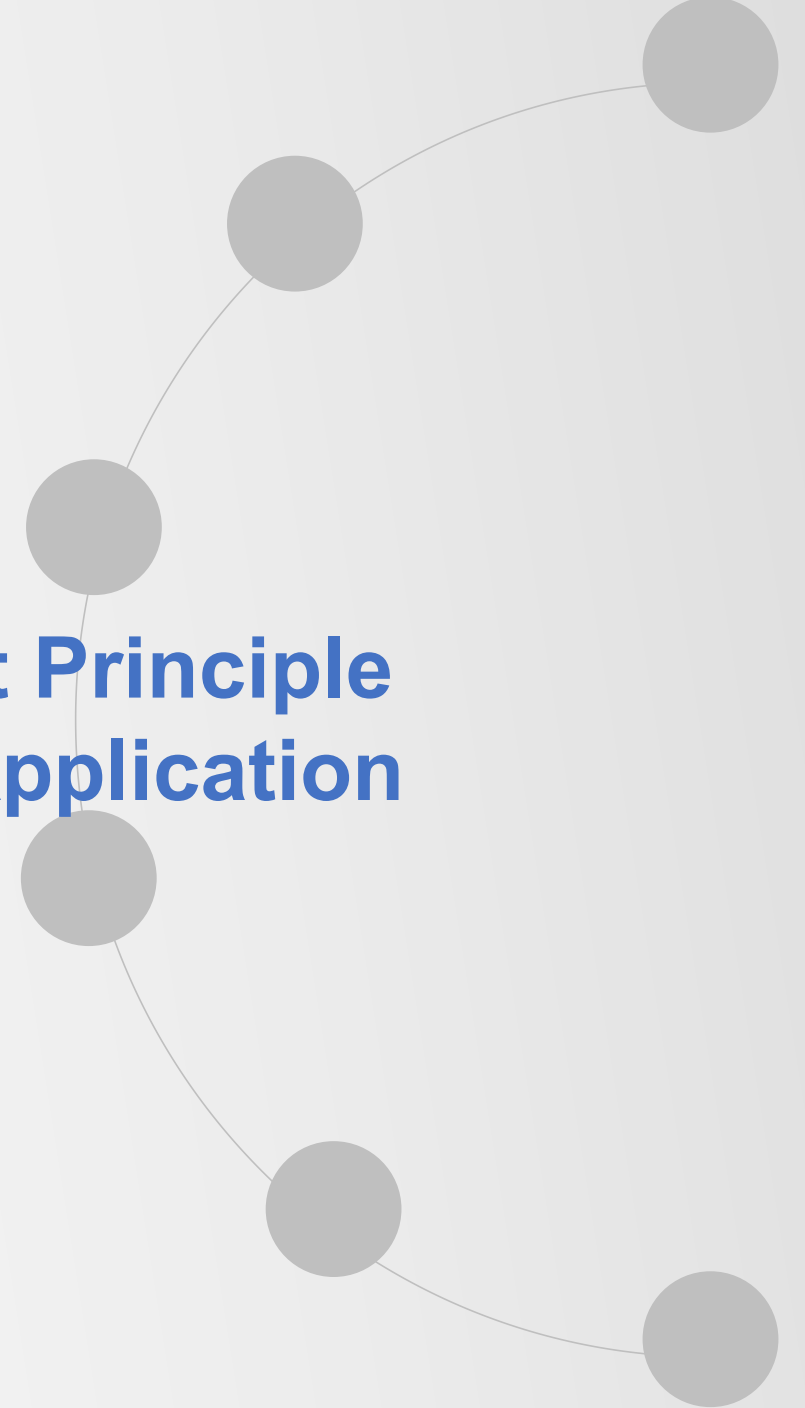
➤ Sapphire Laser Refrigeration, Super Continuous Protection of the Epidermis

- ✓ The temperature of the treatment head drops from 15°C to 4°C in no more than 40 seconds;
- ✓ The temperature can be kept at 6°C stably under the condition of continuous high energy light output;
- ✓ It can provide good protection for the epidermis and make the treatment experience more comfortable.





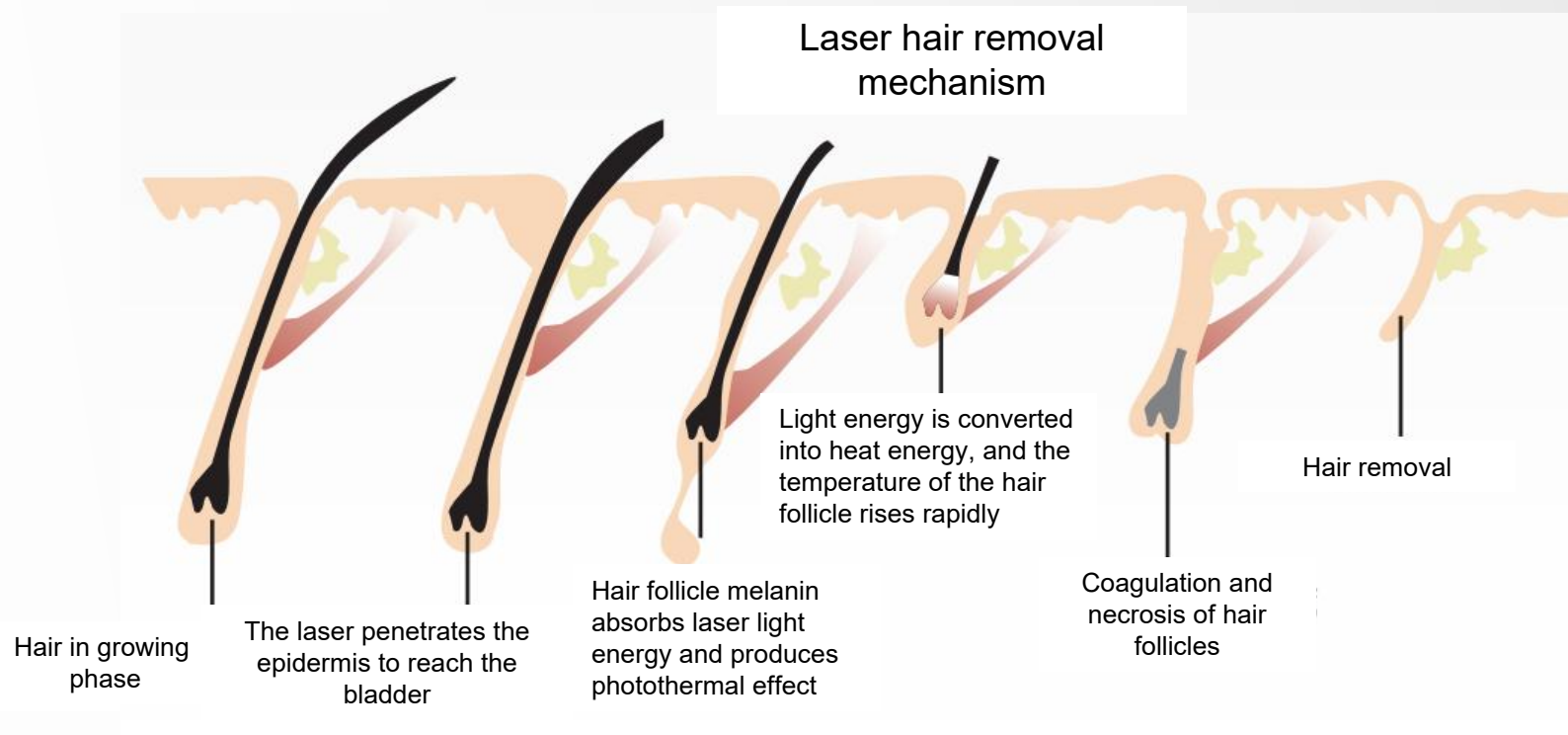
Treatment Principle & Clinic Application



➤ Laser Hair Removal Mechanism

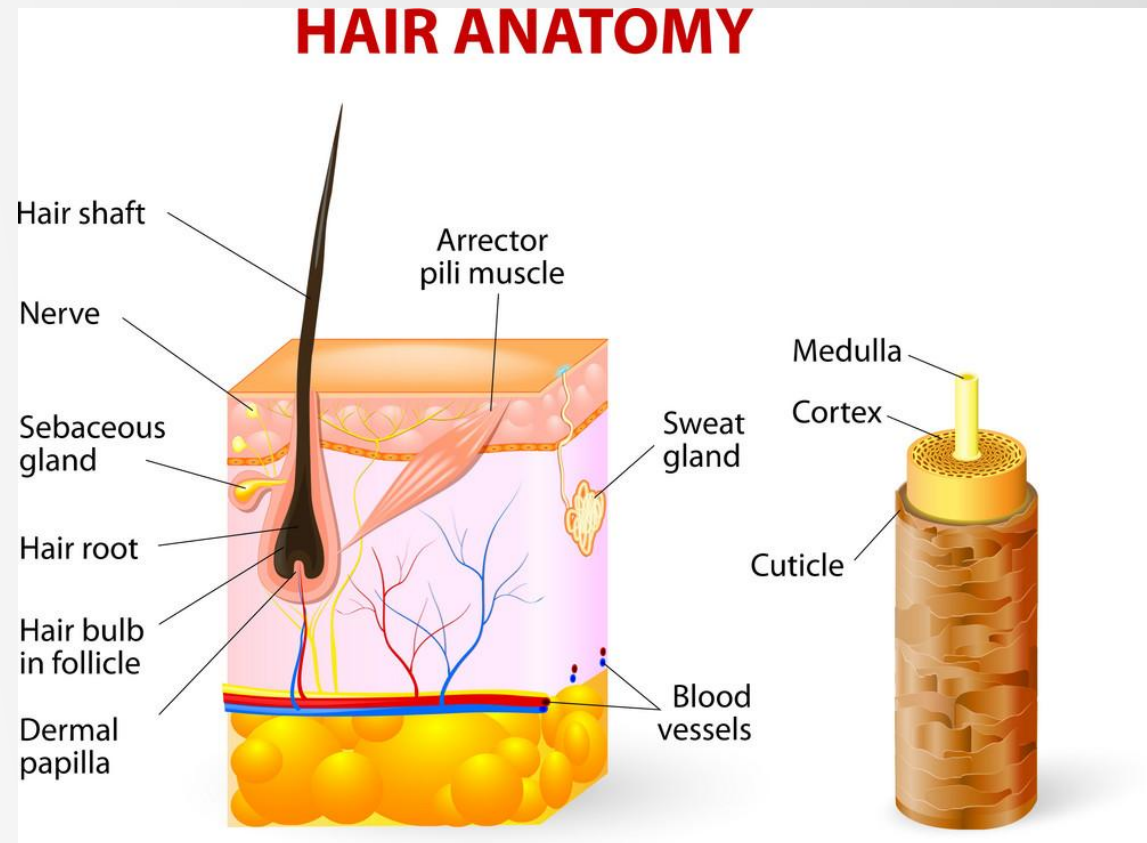
The laser generated by the semiconductor hair removal system can penetrate the epidermis to the hair follicle. According to the selective photothermal principle, the energy of the laser is preferentially absorbed by the melanin in the hair, effectively destroying the hair follicle and shaft, and then losing the hair regeneration ability;

Because the photothermal effect is confined to the hair follicles, it prevents the heat energy from damaging the surrounding tissues and does not form scars.



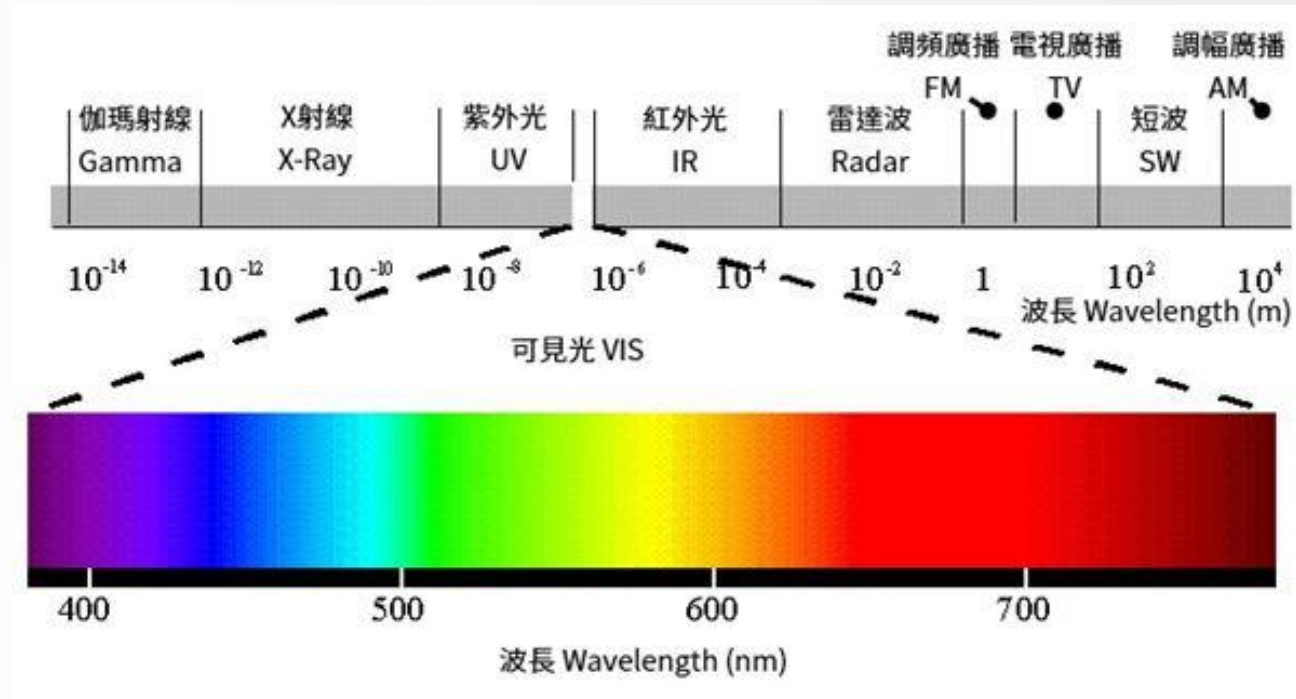
➤ Why do you Have to Epilate Multiple Times?

- ✓ The growth process of hair follicles is divided into growth phase, resting phase and degenerative phase. Only the hair in the growth period can be destroyed by laser because it contains more melanin. Therefore, laser hair removal treatment cannot be successful at one time, and repeated treatment is necessary.
- ✓ Generally 4 to 6 times can achieve permanent hair removal. The treatment interval is 3-6 weeks (not more than 2 months). The best time for retreatment is when the hair grows 2 to 3 mm.



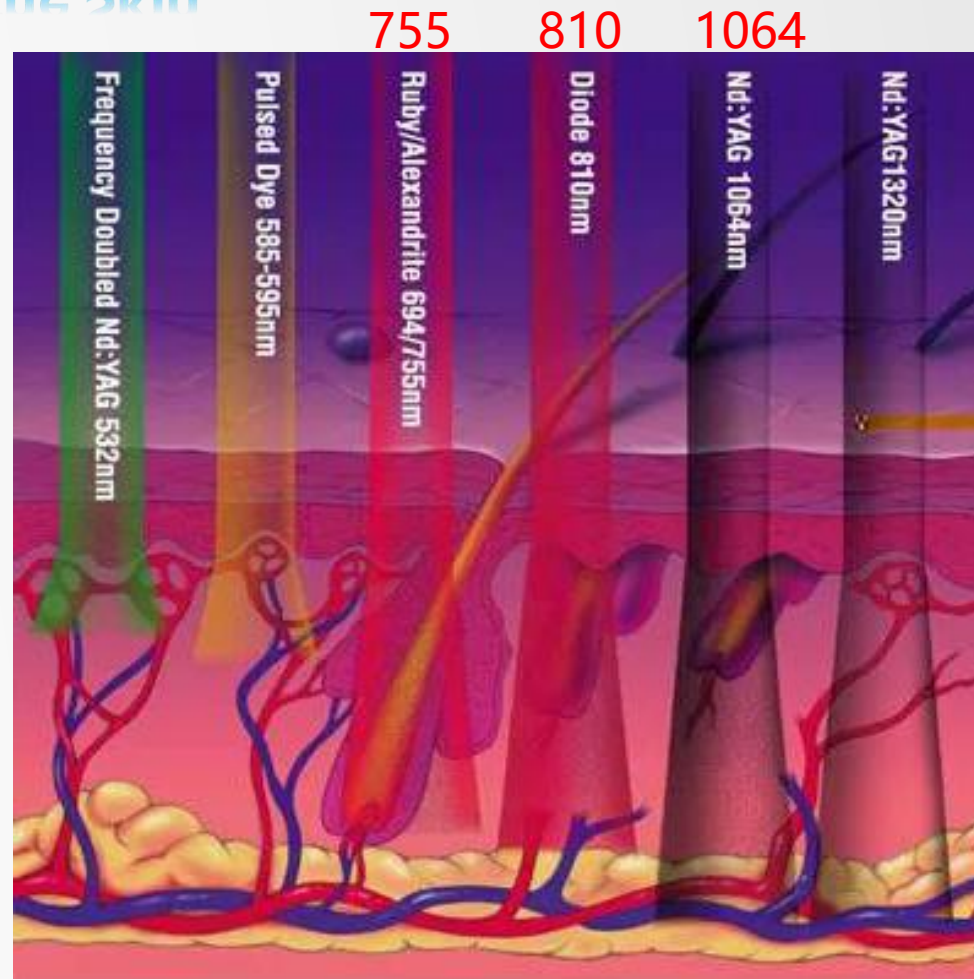
➤ Visible Light

- ✓ Light is an electromagnetic wave (visible spectrum) that can be seen by the naked eye.
The visible light that human eyes can see is only a small part of the entire electromagnetic spectrum.
Different wavelengths of visible light show different colors in human eyes.
- ✓ The visible spectrum of electromagnetic waves is approximately 390~800nm.



➤ Depth of the Laser Penetrating the Skin

- ✓ As the laser wavelength increases, the laser penetrates the skin deeper.

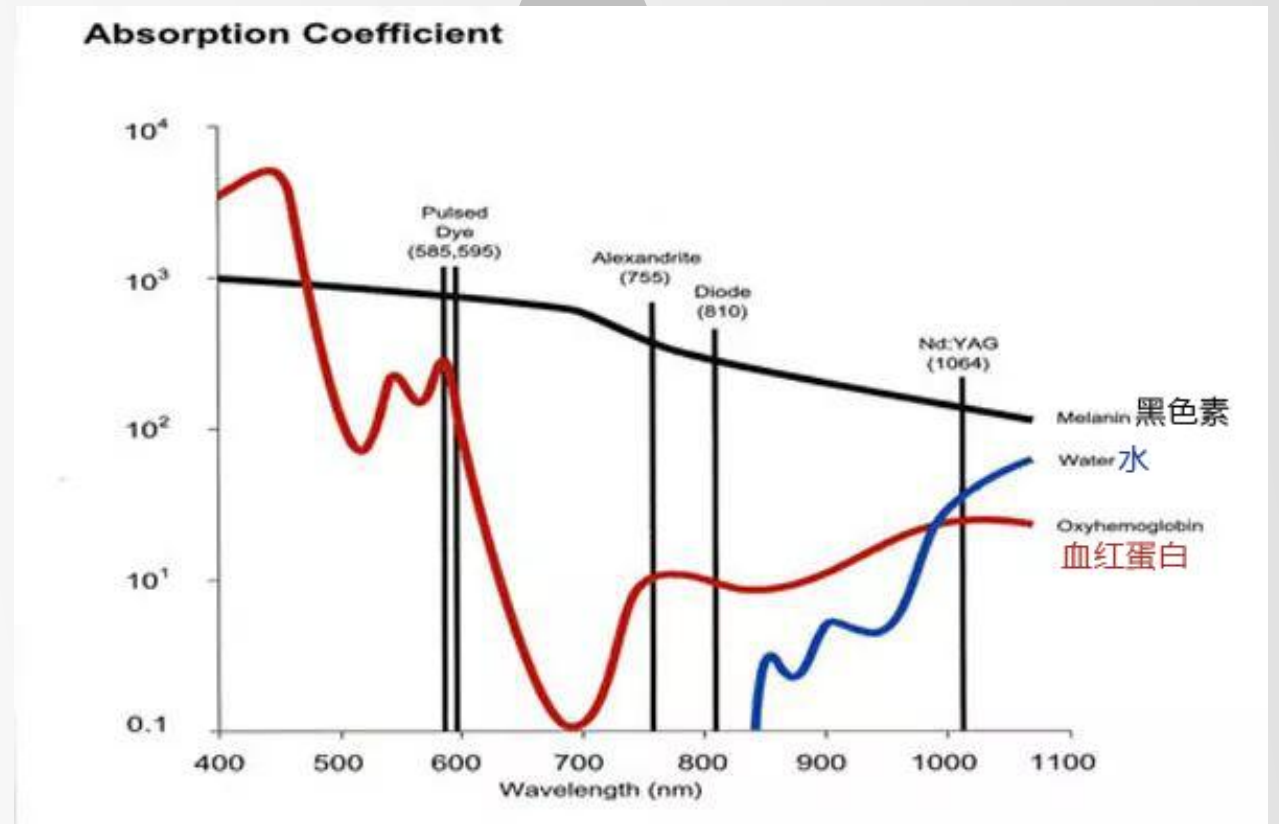


Various wavelengths of light can penetrate the depth of white skin

➤ Melanin Absorption of Laser

- ✓ With the increase of laser wavelength, the absorption rate of melanin to laser decreases;
- ✓ Lasers with wavelengths below 700nm preferentially heat the melanin in the epidermis. Short wavelengths are more likely to cause very high epidermal temperatures, so short-wavelength hair removal is generally not necessary;
- ✓ As the wavelength increases, the absorption rate of melanin decreases, but the penetration of the laser is deeper (at the same time it means that the epidermis is less likely to be heated);
- ✓ 755nm, 808/810nm, 1064nm can be used for hair removal treatment.

Absorption curves of various color bases in the skin to laser wavelength:



➤ 755nm/808nm/1064nm Clinic Application

Laser wavelength	Clinic application
755nm	Better for white skin, light-colored or fine hair
808nm	Suitable for all kinds of skin and hair
1064nm	Better for black hair with darker skin

Why is 1064nm semiconductor laser suitable for black skin?

Because black skin has more melanin in the epidermis, long wavelengths such as 1064nm can bypass the melanin in the epidermis, so the pain will not be so strong.

In addition, the 1064nm laser has strong penetrating power to the skin and can directly act on the hair follicles of dermis, so the hair removal effect is good.

➤ Precautions for Hair Removal

- ✓ A skin test must be performed before treatment;
Energy must be adjusted from low to high;
- ✓ During the skin test, the most suitable energy for the skin is obtained, and then a large area treatment is performed.
- ✓ The interval is 30-40 days;
- ✓ 4-6 times can achieve permanent hair removal effect.



Before

After

➤ Service

1. Machine life

- (1) The target bar has 50 million shoots in total.
- (2) The service life of the host is 5 years;
- (3) The treatment handle is the main application part, and its warranty period is 1 year;

2. After-sales service

Free 24-hour online technical support, engineers directly provide online technical support to clients.



About Us

Rejuva Fresh, LLC is a preeminent US supplier of professional beauty machines and aesthetic solutions. We are passionate about helping you and your clients to achieve the most effective results in skin rejuvenation and body sculpting. Our expansive selection of non-invasive products include ultrasonic cavitation, ems sculpting, cool sculpting, hydro dermabrasion, cosmetic lasers and much more..

When you shop with Rejuva Fresh you are buying more than a piece of equipment; you are also investing in the future success of your salon/ spa/clinic business, and the ability to strategically capitalize on market trends in the beauty industry.



Rejuva Fresh



1(800)249-1310



rejuvafresh.com



hello@rejuvafresh.com