

---

# User Manual



**Thank you and congratulations on your choice of the Musculpting Machine.**



Before Installing or Operating this equipment, please read these instructions carefully, and keep near the device for future reference.

### **Manufacturer's Disclaimer Statement**

The information in this document is subject to change without notice and does not represent a commitment on the part of the vendor. No warranty or representation, either expressed or implied, is made with respect to the quality, accuracy or fitness for any particular purpose of this document. In no event will the manufacturer or any authorised distributors be liable for direct, indirect, special, incidental or consequential loss or damages arising out of the use or inability to use this product or documentation, even if advised of the possibility of such damages.

# Table of Contents

Thank you and congratulations on your choice of the Musculpting Machine.....	2
Chapter 1 - Introduction of the Machine.....	4
1.1 Treatment Principle.....	4
1.2 Device Structure.....	4
Chapter 2 - Safety and Compliance.....	5
2.1 Client Safety.....	5
2.2 Electric Safety.....	5
Chapter 3 - Installation Procedure.....	6
3.1 Accessories List.....	6
3.2 Installation Requirements.....	7
3.3 Installation of Handle Bracket and Screen.....	7
3.4 Install the Handle.....	11
3.5 Install the Emergency Stop Handle.....	12
3.6 Leakage Protection.....	12
3.7 Emergency Stop Button and Key .....	12
Chapter 4- Operational Procedure.....	13
4.1 Requirement for Operators.....	13
4.2 Examination.....	13
4.2.1 Professional mode.....	15
4.2.2 Intelligent mode.....	16
Chapter 5 - The Operation of the Machine.....	17
5.1 Treatment Operation.....	17
5.2 Operate Areas.....	19
5.3 Treatment Notice.....	19
5.4 Taboo Crowd.....	20
5.5 Clinical Response.....	20
Chapter 6 - Maintenance of the machine.....	21
6.1 General Cleaning.....	21
6.2 Transport, Storage and Movement.....	21
6.3 Troubleshooting Guide.....	21
6.3.1 The machine does not start.....	21
6.3.2 Operating head does not work when the button is pressed.....	21
6.3.3 Electric shock may occur when touching the machine.....	21
Contact Us.....	22

# Chapter 1 - Introduction of the Machine

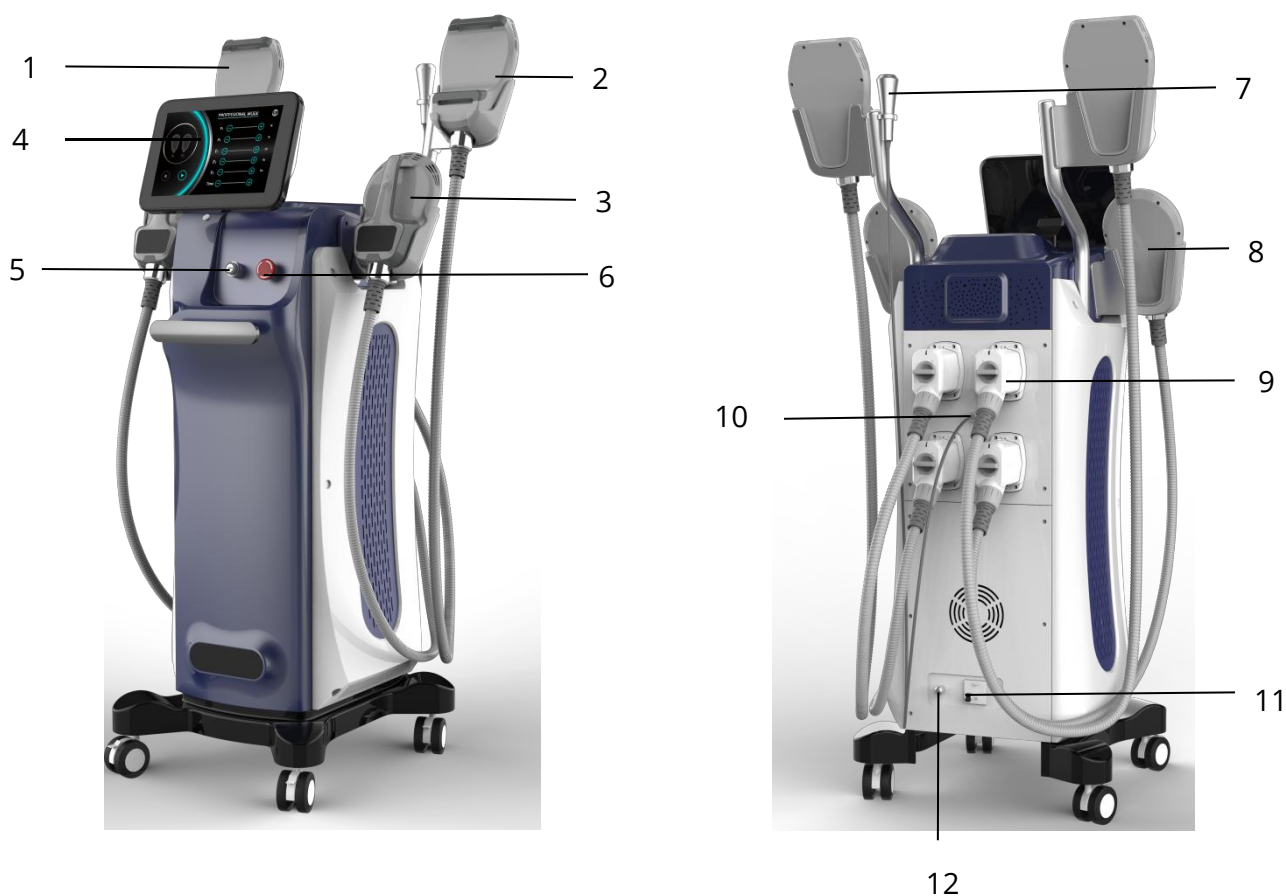
## 1.1 Treatment Principle

Using High Intensity Focused Electro-Magnetic (HIFEM) technology, Musculpting Pro induces supramaximal muscle contractions not achievable through exercise (or voluntary contractions).

During normal voluntary muscle contractions the muscle fibers relax between each nervous stimulus. Musculpting Pro generates impulses at such a rapid frequency that it doesn't allow such a relaxation phase. Supramaximal contractions cause an enhanced adrenaline release, which triggers an intensive lipolysis response in fat cells. When exposed to the supramaximal contractions, the muscle tissue is forced to adapt, responding with a deep remodeling of its inner structure that results in muscle building and fat burning.

## 1.2 Device Structure

The machine structure consists of the following units:



1. Handle	7. Emergency Stop Handle
2. Handle	8. Handle
3. Handle	9. Connector of Handle
4. Touch screen	10. Connector of Emergency Stop Handle
5. Key Switch	11. Leakage Protection
6. Emergency Stop Button	12. Power Connector

# Chapter 2 - Safety and Compliance

## 2.1 Client Safety

Client's safety mainly depends upon well-trained operators, client consultation, correct skin analysis and a suitable treatment room. The attending operators must inform the client of all the risks with the use of this device.

### **Warning**

Warning: Use this system only if you are trained and qualified to do so.

Warning: If any problems occur during system operation, take immediate action(s): lift the transducer off the patient's skin, press the emergency stop handle to discontinue treatment in progress, and/or press the red emergency stop button to completely halt system operation.

## 2.2 Electric Safety

To ensure safe use, the rated voltage of the operating system is 220V, the maximum input current is 10A or 110V, and the maximum input current is 15A. This machine is equipped with an automatic leakage protection device. When a leakage occurs, the machine will automatically cut off the protection system.

# Chapter 3 - Installation Procedure

The process of installation includes:

- ◆Unpacking the device and checking contents.
- ◆Assembly of its components and ensure that all connections are firmly in place.
- ◆Installation of handpiece.
- ◆Connect the power supply.
- ◆Switch on the device and test all functions / parameters of the system.

## 3.1 Accessories List

- ◆Unpack the unit, remove all packaging material, and examine for damages.
- ◆Do not proceed with installation if unit is damaged.



1. Keys 2. Fuse 3. Belt	4. Parts of the Handle Brackets 5. Screws
-------------------------------	--

**IMPORTANT ATTENTION:** Please keep all packaging for safe storage and in case of any warranty returns or servicing.

It is forbidden to open the machine and tear down all the components without any authorization.

### 3.2 Installation Requirements

Place the equipment according to the requirements below:

- ◆Treatment Room Temperature: 10°C~30 °C
- ◆Relative humidity: ≤75%
- ◆Air pressure: 860-1060hpa
- ◆Power requirement: AC 220v± 10%; 50Hz±2% ;
- ◆Keep the fans and vents clear of any obstructions to maintain airflow and prevent overheating.

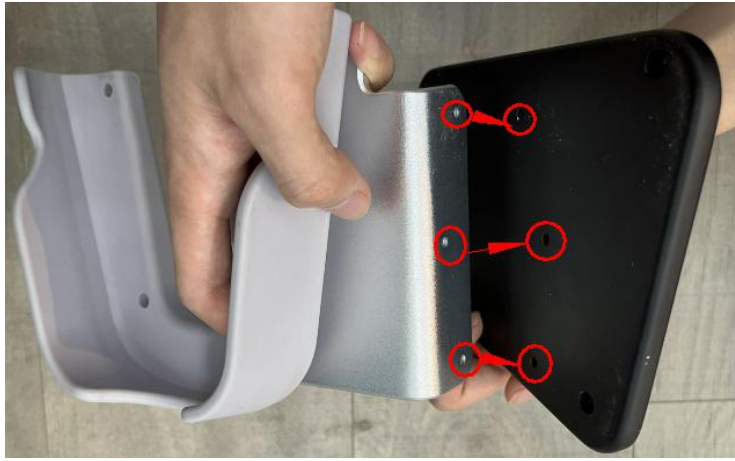
### 3.3 Installation of Handle Bracket and Screen



**Step 1:** Align the components as shown above.



**Step 2:** Put the screws in the holes shown and tighten them with a hex screwdriver.



**Step 3:**Align the components as shown above.

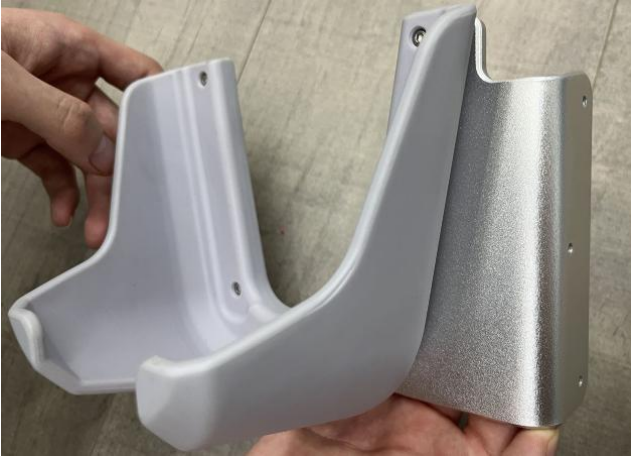


**Step 4:**Put the screws in the holes shown and tighten them with a screwdriver.



**Step 5:** Align the components to the machine as shown above, put the screws in the holes shown and tighten them with a screwdriver.





**Step 6:** Align the components as shown above.



**Step 7:** Put the screws in the holes shown and tighten them with a hex screwdriver.



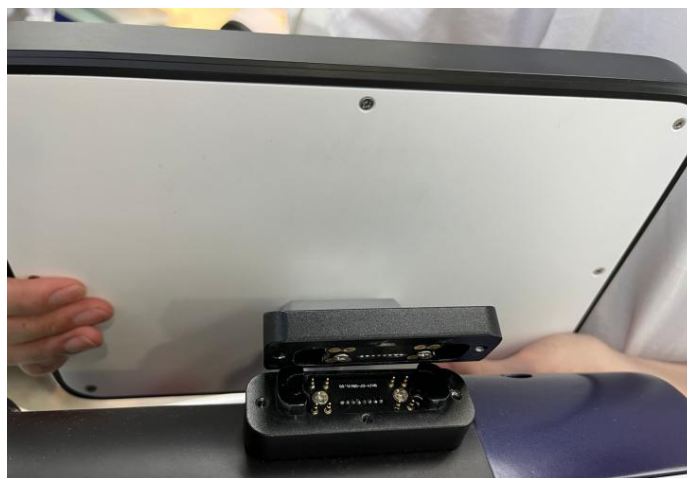
**Step 8:** Align the components as shown above.



**Step 9:**Put the screws in the holes shown and tighten them with a screwdriver.



**Step 10:**Align the components as shown above. Put the screws in the holes shown and tighten them with a screwdriver.



**Step 11:**Align the screen on the machine as shown above.

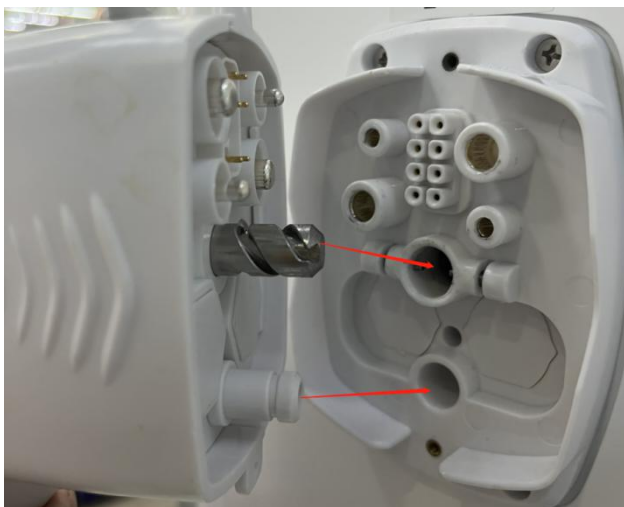


**Step 12:**Put the screws in the holes shown and tighten them with a hex screwdriver.



**Step 13:**Install the handle bracket of other side as Step1-10 and install the bracket of the emergency stop handle. The machine ends up as pictured above.

### 3.4 Install the Handle



**Step 1:**Align the protrusion on the interface of the handle with the groove of the machine's connector, and then push it in.



**Step 2:**Turn the icon knob as shown.

### 3.5 Install the Emergency Stop Handle



**Step 1:** Align the groove on the interface of the handle with the protrusion of the machine's connector, and then push it in.



**Step 2:** Turn the icon knob as shown.

### 3.6 Leakage Protection



**OFF**



**ON**

After the mains lead is connected, flick the Leakage protection upwards and the machine is now ready for use.

### 3.7 Emergency Stop Button and Key



**Step 1:** Release the emergency stop button in the direction of the arrow.



**Step 2:** Turn the key as shown.

# Chapter 4- Operational Procedure

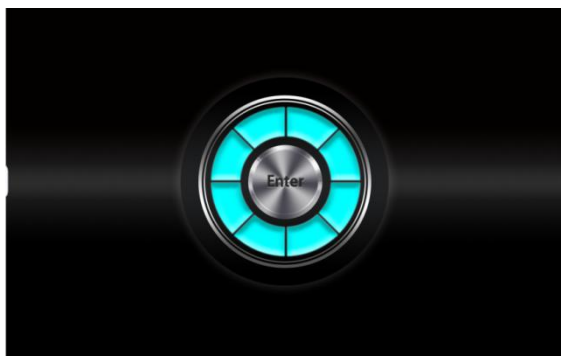
## 4.1 Requirement for Operators

- ◆The operator should be aware of the expertise required to use the machine, should be trained to meet local and national laws and adhere to best practice for the country the machine will be used in.
- ◆Complete Core of Knowledge Training.
- ◆Have full insurance that covers Public Liability, Contents and Treatment Risk insurance.

## 4.2 Examination

Examine to make sure the equipment is installed according to the installation instructions and requirements. Check if working environment is suitable.

After turning on the machine, you will see the following operation interfaces(Pic1).



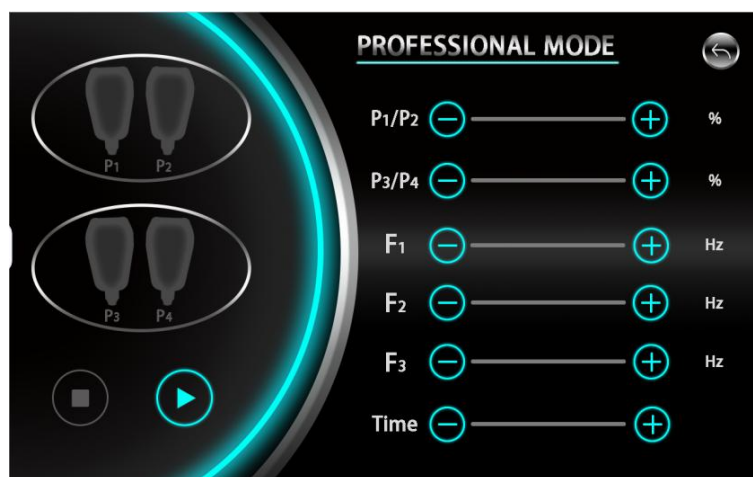
(Pic1)



(Pic2)

Choose the mode on interface of mode selection(Pic 2) and click it to enter the next interface.

If you click the Professional Mode then you will enter the parameter setting interface(Pic3).

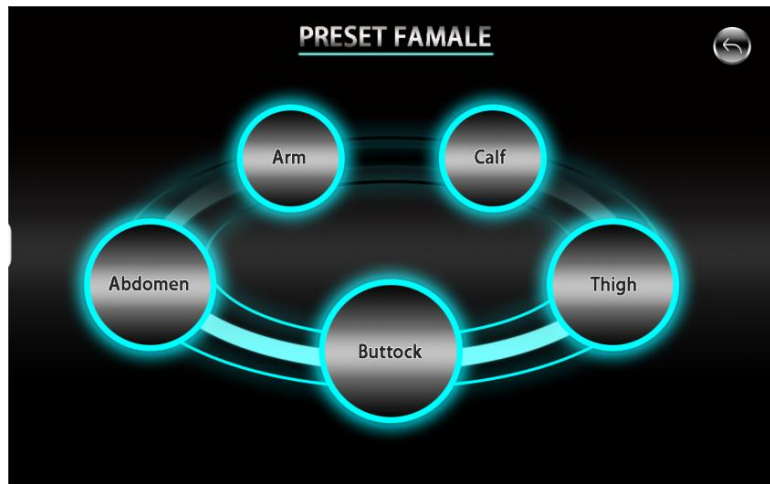


(Pic3)

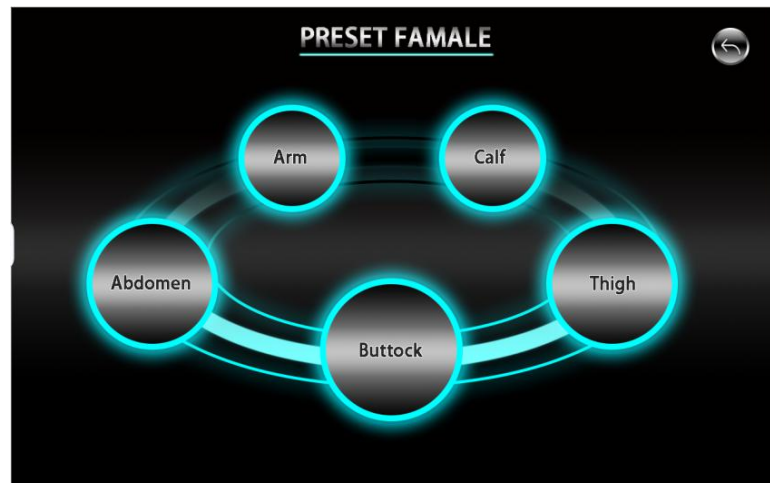
If you click the Intelligent Mode then you will enter the mode selection interface(Pic4), then it will enter the next interface (Pic5) to choose the gender you would like to use, then you can see the body part selection (Pic6), after that you will enter the parameter setting interface(Pic7).



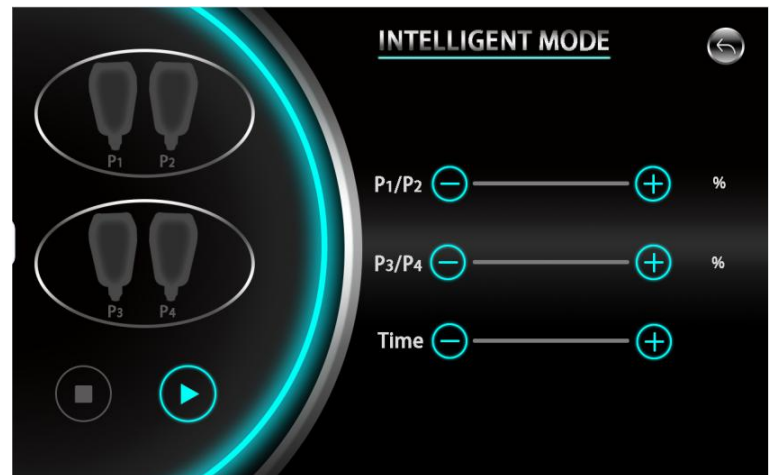
(Pic4)



(Pic5)



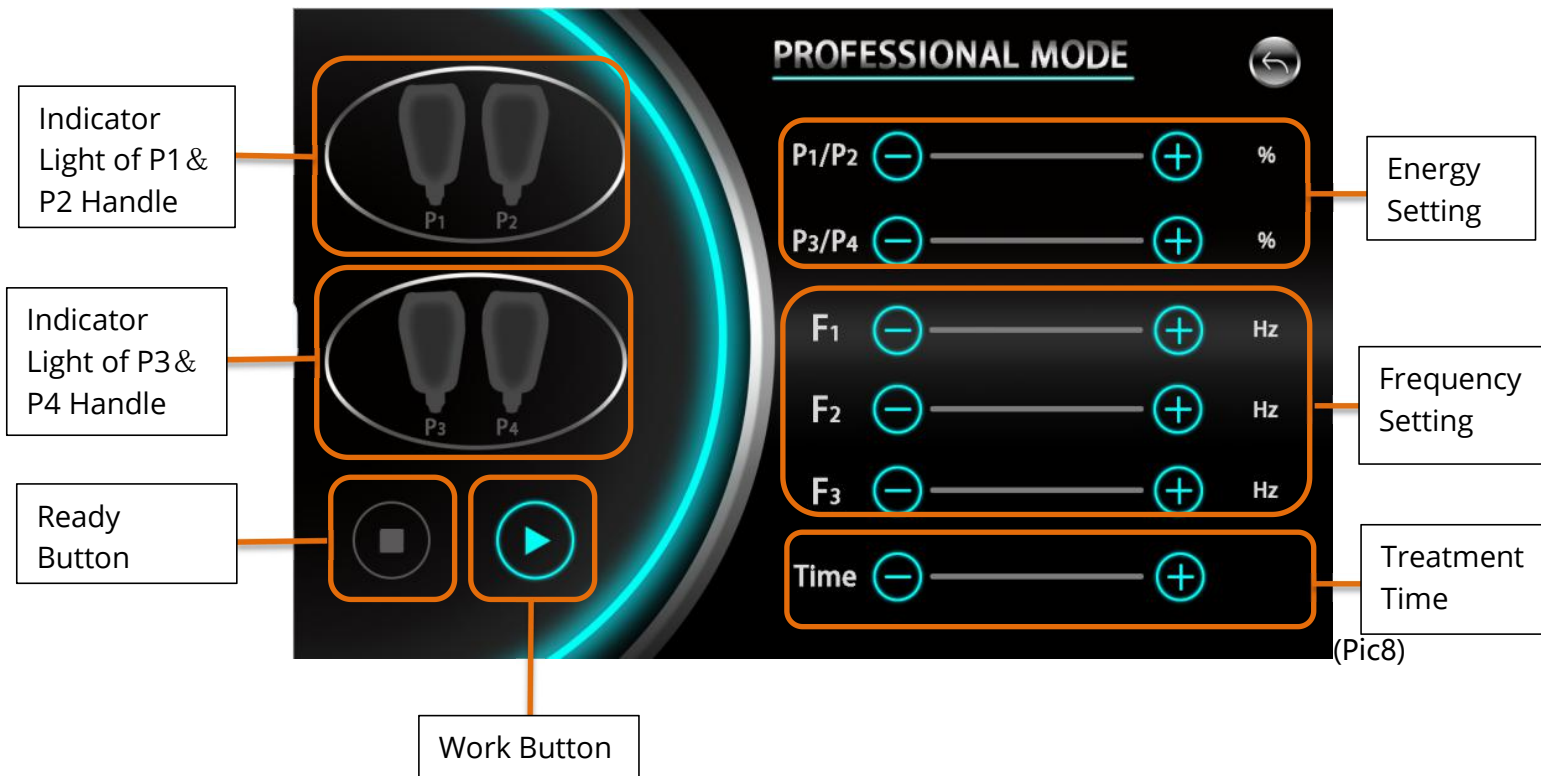
(Pic6)







(Pic7)

#### 4.2.1 Professional mode

This mode the interface as follow(Pic8):

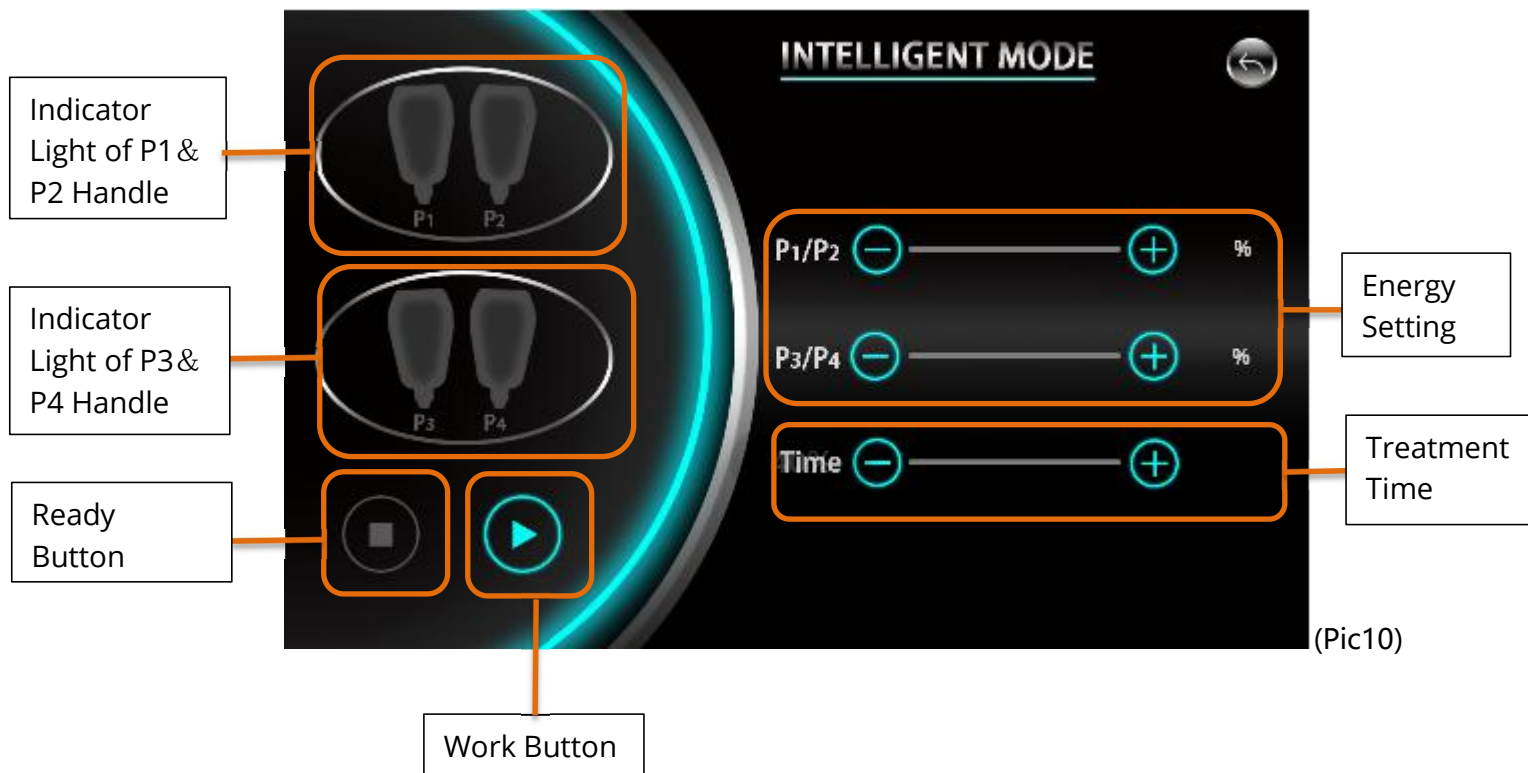





Touch the symbol   to adjust the parameters then click the  to ready the treatment. After that you can click  to begin the treatment.

Notice: The system divides the work process into 3 phase, F1,F2,F3 means the frequency of every phase.

## 4.2.2 Intelligent mode

This mode the interface as follow(Pic10):



Touch the symbol   to adjust the parameters then click the  to ready the



treatment. After that you can click  to begin the treatment.





# Chapter 5 - The Operation of the Machine

## 5.1 Treatment Operation

### Step1. Preparation of the treatment

- ◆Fully communicate with customer. Understanding the guest's needs, physical condition, take photos, and fill in customer information files.
- ◆Check if the instrument is working properly, clean the handle before treatment.
- ◆Explain to clients how they might feel during treatment.

### Step2. Before the treatment

- ◆Remove all metal accessories from customers.
- ◆Undress the treatment area and have the patient lie down.

### Step3. Begin the treatment

- ◆Tie the handle to the treatment site with the belt.
- ◆ Turn on the machine and select the mode you need and adjust the parameters. Adjust instrument parameters according to the treatment item. And then click ready button, and stick the handle vertically close to the treatment area, press the work button to operate, ask customer's feeling, and adjust the energy.



◆The following picture shows the suggested parameters.

male	ARM				CALF				THIGH				BUTTOCK				ABDOMEN			
	HIIT				HIIT				HIIT				HIIT				HIIT			
	P	F1	F2	F3	P	F1	F2	F3	P	F1	F2	F3	P	F1	F2	F3	P	F1	F2	F3
	50%	20	36	15	50%	20	36	15	60%	20	36	15	60%	20	40	15	60%	20	36	15
	STRENGTH				STRENGTH				STRENGTH				STRENGTH				STRENGTH			
	P	F1	F2	F3	P	F1	F2	F3	P	F1	F2	F3	P	F1	F2	F3	P	F1	F2	F3
	50%	25	40	20	50%	25	40	20	60%	25	40	20	60%	25	42	20	60%	25	40	20
	MUSCLE BUILDING				MUSCLE BUILDING				MUSCLE BUILDING				MUSCLE BUILDING				MUSCLE BUILDING			
	P	F1	F2	F3	P	F1	F2	F3	P	F1	F2	F3	P	F1	F2	F3	P	F1	F2	F3
	50%	30	45	25	50%	30	45	25	60%	30	45	25	60%	30	45	25	60%	30	45	25
SHAPE UP				SHAPE UP				SHAPE UP				SHAPE UP				SHAPE UP				
P	F1	F2	F3	P	F1	F2	F3	P	F1	F2	F3	P	F1	F2	F3	P	F1	F2	F3	
50%	15	40	20	50%	15	40	20	60%	15	40	20	60%	15	42	20	60%	15	40	20	
FAT BURNING				FAT BURNING				FAT BURNING				FAT BURNING				FAT BURNING				
P	F1	F2	F3	P	F1	F2	F3	P	F1	F2	F3	P	F1	F2	F3	P	F1	F2	F3	
50%	5	40	8	50%	5	40	8	60%	5	40	8	60%	5	45	8	60%	5	40	8	

\*The above parameters can be adjusted according to the feeling and actual situation of the customer.

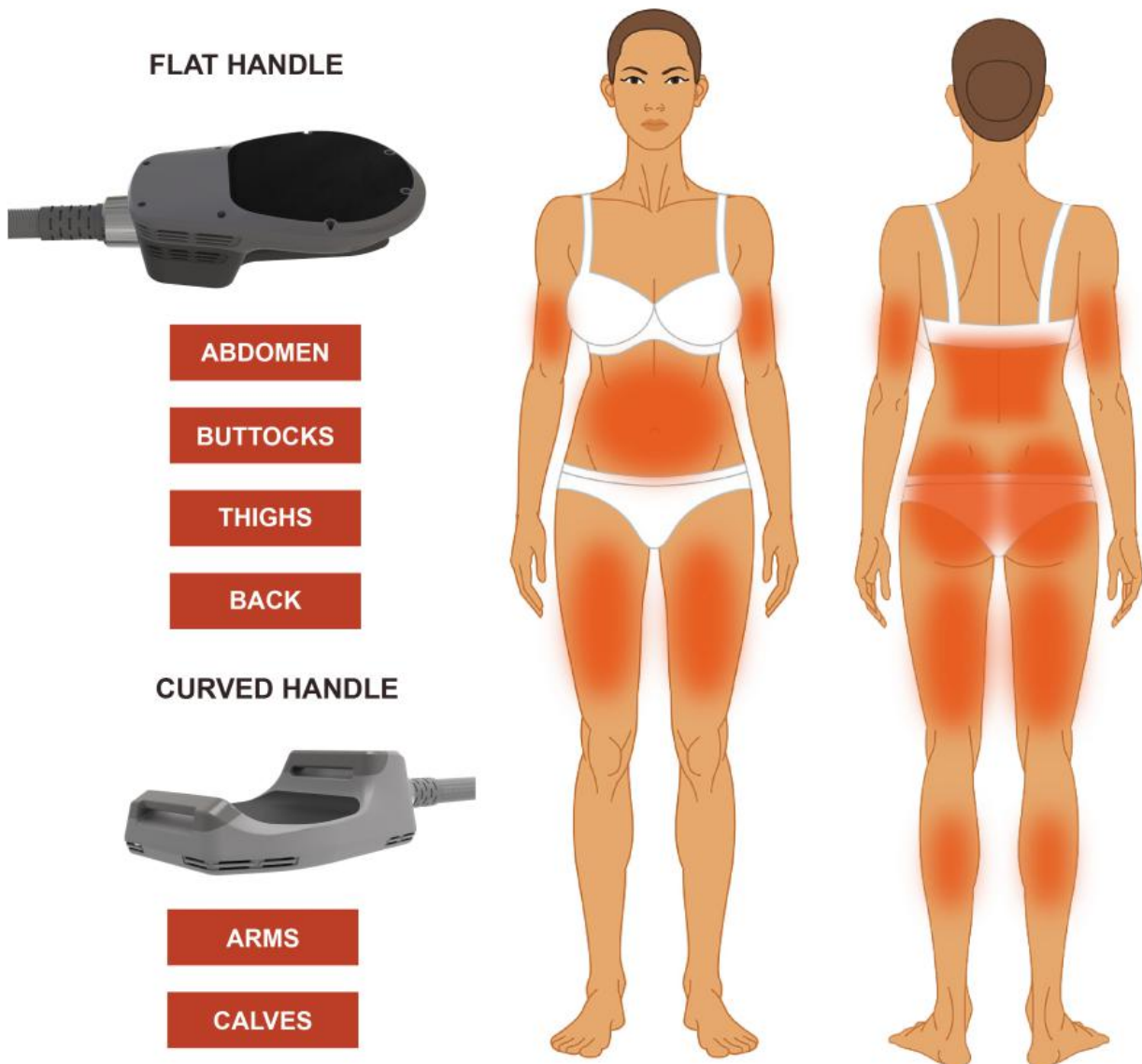
male	ARM				CALF				THIGH				BUTTOCK				ABDOMEN			
	HIIT				HIIT				HIIT				HIIT				HIIT			
	P	F1	F2	F3	P	F1	F2	F3	P	F1	F2	F3	P	F1	F2	F3	P	F1	F2	F3
	50%	20	36	15	50%	20	36	15	60%	20	36	15	60%	20	40	15	60%	20	36	15
	STRENGTH				STRENGTH				STRENGTH				STRENGTH				STRENGTH			
	P	F1	F2	F3	P	F1	F2	F3	P	F1	F2	F3	P	F1	F2	F3	P	F1	F2	F3
	50%	25	40	20	50%	25	40	20	60%	25	40	20	60%	25	42	20	60%	25	40	20
	MUSCLE BUILDING				MUSCLE BUILDING				MUSCLE BUILDING				MUSCLE BUILDING				MUSCLE BUILDING			
	P	F1	F2	F3	P	F1	F2	F3	P	F1	F2	F3	P	F1	F2	F3	P	F1	F2	F3
	50%	30	45	25	50%	30	45	25	60%	30	45	25	60%	30	45	25	60%	30	45	25
SHAPE UP				SHAPE UP				SHAPE UP				SHAPE UP				SHAPE UP				
P	F1	F2	F3	P	F1	F2	F3	P	F1	F2	F3	P	F1	F2	F3	P	F1	F2	F3	
50%	15	40	20	50%	15	40	20	60%	15	40	20	60%	15	42	20	60%	15	40	20	
FAT BURNING				FAT BURNING				FAT BURNING				FAT BURNING				FAT BURNING				
P	F1	F2	F3	P	F1	F2	F3	P	F1	F2	F3	P	F1	F2	F3	P	F1	F2	F3	
50%	5	40	8	50%	5	40	8	60%	5	40	8	60%	5	45	8	60%	5	40	8	

\*The above parameters can be adjusted according to the feeling and actual situation of the customer.

Suggested Parameters of EMS			
Treatment Time	Interval of Single Treatment	Course of treatment	Interval of every course
30-40min	3 Days	4 times as a course	2-3months
*The above parameters can be adjusted according to the feeling and actual situation of the customer.			

- ◆Take a photo and record the guest's usage parameters for reference in the next operation.
- ◆ Explain the customer's postoperative care and make an appointment for the next treatment time.
- ◆ A single treatment time is 30 minutes, twice a week, four times as a course of treatment. The operator can set the treatment course according to the client's physical condition and expected effect to achieve the best effect. After the first course of treatment is completed, it is recommended to do a course of treatment every 2-3 months to maintain the best condition.

## 5.2 Operate Areas



## 5.3 Treatment Notice

- ◆ Wait at least half an hour after eating to do the treatment. It is forbidden to eat or drink during the treatment, and eat after 1 hour after the treatment.
- ◆ No metal objects are allowed on the patient.
- ◆ The total treatment time of one day should not exceed 1.5h, and one part should not exceed 1h.
- ◆ After treatment, there may be soreness, just like after exercising, it is a normal reaction, and the soreness will disappear automatically in 1-3 days.
- ◆ There are prostheses or fillers in the treatment area, and the operation should be avoided.
- ◆ The continuous working time of the instrument is too long in the middle of the way, it should be properly shut down and protected for a few minutes before use.
- ◆ For people with excessive fat, it is recommended to use it in combination with other fat-dissolving instruments.

## **5.4 Taboo Crowd**

- ◆ People with defibrillators, pacemaker, neurostimulator and drug pump.
- ◆ People with malignant tumors.
- ◆ Epilepsy.
- ◆ Pregnant, lactating, menstrual women
- ◆ If there is a wound on the skin, avoid the wound or do not do it.
- ◆ People with metal or electronic implants at the treatment site.
- ◆ People who have recently had surgery
- ◆ Unrealistic fantasists about the effect.

## **5.5 Clinical Response**

◆ After treatment, there may be soreness, just like after exercising, it is a normal reaction, and the soreness will disappear automatically in 1-3 days.

◆ After one course of treatment, the average fat was reduced by 19%, the fat layer was reduced by 4.4 mm, the fat metabolism was accelerated by five times, the waist circumference was reduced by an average of 4 cm, the abdominal muscle separation was reduced by 11%, the average muscle mass was increased by 16%, and the average muscle mass was increased by 16%.

# Chapter 6 - Maintenance of the machine

To ensure safe and reliable operation, regular maintenance and good care are very important. This section describes the routine and other periodic maintenance of this machine handling system that operators can perform.

## 6.1 General Cleaning

Clean the outside of the device regularly with a soft damp cloth or microfiber cloth. You can also use neutral detergents and alcohol-free wipes. The handle operating head should be cleaned regularly after use.

You should clean the head once a week or after use.

The operating head should always be free of dirt and accessories.

## 6.2 Transport, Storage and Movement

- ◆ Minimize transportation, because the risk of equipment damage is greater.

- ◆ When moving or storing, please keep and use the original packaging.

- ◆ If you move to another treatment room, please keep the device level when moving.

- ◆ Be careful when storing and using, pay attention to avoid impact, collision, squeezing and vibration. And the machine needs to be reset and stored in a dust proof state after each use.

- ◆ When moving or storing, please keep and use the original packaging. Do not move your device unless necessary. If you move to another treatment room, keep it level while carrying it.

- ◆ 220V/110V, 2000W voltage stabilizer should be installed to prevent voltage instability and pulse interference from causing damage to the machine.

- ◆ This machine should be placed in a room with a temperature higher than 20°C, and stay for at least 6 hours before use.

## 6.3 Troubleshooting Guide

This section outlines the most basic troubleshooting steps for the machine.

### 6.3.1 The machine does not start

- ◆ Check the power supply has electricity and the attaching plugs are securely inserted both ends and socket is switched on.

- ◆ Check the red emergency button is released.

### 6.3.2 Operating head does not work when the button is pressed

- ◆ Check whether the machine is in the correct working state.

- ◆ Check whether the cable and connection plug are damaged, if any parts are damaged, please contact us to replace.

### 6.3.3 Electric shock may occur when touching the machine

- ◆ Three grounding plugs should be used, and the power socket must be properly grounded.

- ◆ The voltage is unstable, and a voltage regulator should be introduced.