



FOUR-IN-ONE

Rotary Negative Pressure RF Machine
+ Inner ball rollrt Machine

A. Product Description

Welcome to choose the latest product of our company, the four-in-one multifunctional combination instrument, which is a combination of **rotary negative pressure RF Machine** and **inner ball roller Machine** to realize multi-function use of one machine.

Rotary negative pressure RF Machine. The liposuction handle combines vacuum negative pressure + 6MHz radio frequency + 180° mechanical rotation + LED red and blue light technology in one. It is a non-invasive shaping machine. Accurately heat the skin tissue as deep as 2mm and 30mm, so as to promote blood circulation and accelerate the metabolism of fat tissue, so as to realize the four effects of fat melting, shaping, skin tightening and lifting in one. Rotary Negative Pressure RF can be used on any body area that may need contouring: thighs, abdomen, arms, belly and more, and is effective in helping clients suffering from cellulite to improve their skin condition.

Inner ball roller Machine, which uses innovative compression micro-vibration + infrared technology. This technology is to generate mechanical compression micro-vibration to the skin through by a 360° intelligent rotating cylindrical roller handle. which cannot be replicated by hands or other technologies. "Compression micro-vibration therapy" replaces the traditional method of "suction traction massage", using micro-compression instead of suction, and micro-vibration instead of traction. When it used for the body, which can help to improve lymphatic drainage and circulation, deep detoxification, relieve muscle stiffness and soreness, break down subcutaneous fat deposits, eliminate cellulite, reduce cellulite and shape contours. After a few procedures, your body will immediately reduce its volume by 1-2 sizes. When it is used for the face, which can help to improve the formation of blood vessels, thereby supporting the production of collagen and elastin, increasing oxygen delivery,

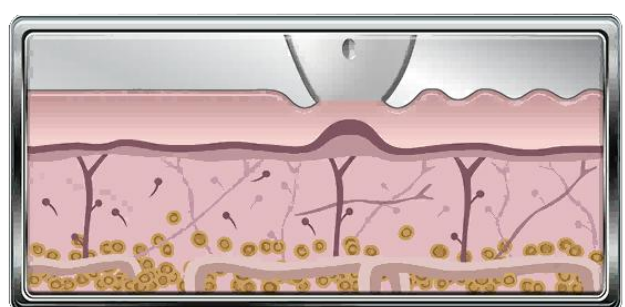
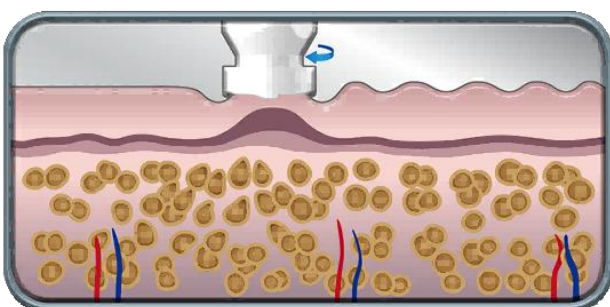
helping to nourish and brighten tissues from the inside, in addition, it can relax and regulate muscles and help reduce expression wrinkles. Appears, reduces swelling, fights tissue sagging, and rejuvenates the face significantly. Compression micro-vibration therapy is specially designed for non-invasive skin rejuvenation, body shaping and physical therapy.

Please read the instruction manual carefully before use and follow the instructions.

B. Working Principle

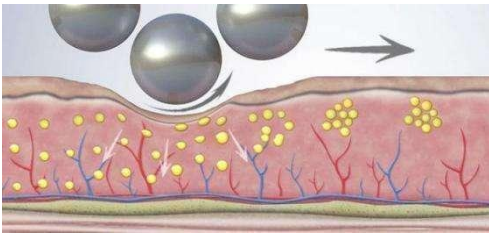
1. Rotary Negative Pressure RF Machine Principle

The Rotary Negative Pressure RF Machine uses vacuum negative pressure + 180° mechanical rotation + temperature control radio frequency + LED red and blue light technology to pull up the skin and subcutaneous muscle tissue, massage the body evenly, dissolve fat and decompose fat cells into fatty acids and glycerin, and then excreted through the lymphatic circulation, eliminate local stubborn fat, while stimulating the contraction and regeneration of collagen fibers in the dermis, reducing cellulite, and making the skin firmer and smoother. Achieve balanced body shape and contouring and facial rejuvenation. The four techniques are combined with aerobic exercises such as sucking, pinching, and rotating on the skin and fat tissue. This aerobic exercise can quadruple the lymphatic drainage function and blood circulation.



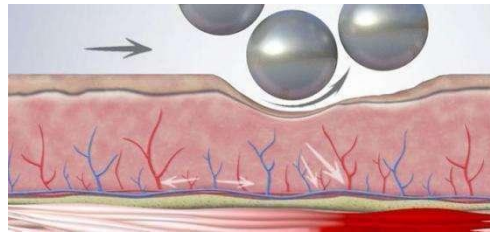
2. Inner ball roller Machine Principle

The inner ball roller machine is a non-invasive mechanical compression micro-vibration + infrared treatment. The principle is to generate compression micro-vibration by rolling the silicone ball along the 360° rotation of the roller. As the ball rotates and exerts pressure on the skin, it produces a "pulsation compression" effect, which realizes the reciprocating motion of continuous pushing, pulling and kneading, and the tissue will experience some pressure. And lifting action, will not squeeze or damage the skin, its principle is to release infrared rays while pressure is applied to the tissues to stretch the cells to naturally and deeply stimulate cell activity, blood flow and oxygenation, and the fat deposits are pressurized and thus loosened for final decomposition , Reduces cellulite and removes cellulite; also exerts pressure on deep muscle groups to fully soften and stretch, thereby reducing muscle stiffness and soreness, accelerating metabolism, eliminating stagnation and fluid accumulation, conditioning tissues and re-tightening skin tissues, reshaping your body . It can also stimulate fibroblasts, increase the production of collagen and elastin, increase blood flow and increase oxygen. As a result, wrinkles are smoothed, puffiness and bags under the eyes are reduced, and the skin is rejuvenated and tightened. This technology has been clinically proven to help tone muscles and sculpt the body and face to rejuvenate. It can also help redesign and tighten the chest.



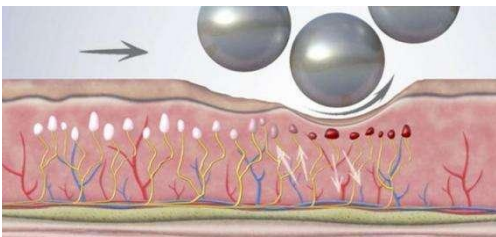
Reshaping action

Reshapes contours and smooths out wrinkles.



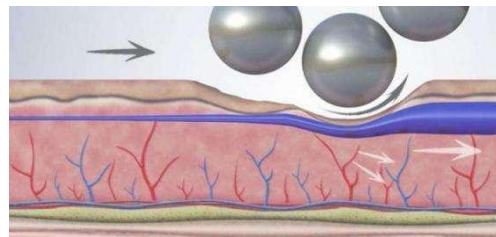
Muscle action

Tones muscles and tightens tissues.



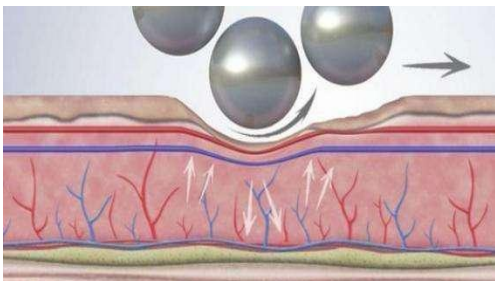
Sedation

Improve oxygen and eliminate pain.



Drain action

Eliminate toxins and help lymphatic drainage.



Vascular effect

Improve blood circulation and nourish tissues.

C. Technology Core

- The RF energy heats cellulite, removes fat deposits, and stimulates the contraction of collagen fibers for better blood flow to all tissues, folds and wrinkles are smoothed, and bags under the eyes and areas of loose skin, including the chin area, disappear.



6MHz RF

- Preset the target temperature before treatment, always control the temperature at the set temperature, and monitor and display it in real time.

Adjustable 42-45° C constant temperature. The subcutaneous tissue reaches 65-70° C, precisely melting fat.



Real-time Temperature Control

- Through the rotation movement and contact with the vacuum negative pressure at the same time, it stimulates the lymph and blood circulation, accelerates the elimination of edema, eliminates lymphatic obstruction, and enhances blood flow to the tissue.



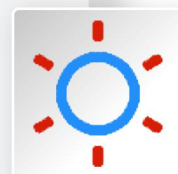
Vacuum Negative Pressure

- 180° alternating rotation and twisting stimulates the metabolism in cells, reduces edema, expels toxins, relieves muscle spasms and pain syndromes.



180° Rotation and Tweaking

- LED red and blue dual light irradiates the skin, which can increase the temperature of fat, stimulate the activity of deep cells, promote blood circulation and decompose triglyceride more efficiently, and help it to be excreted.



LED red and blue double light

D. Accessories

1. Rotary Negative Pressure RF Machine Appendix

Body Swirl Handle

5 Inch Touch Screen



- The liposuction handle combines the four technologies of vacuum negative pressure, 6MHz RF, 180° mechanical rotation, and LED red and blue dual lights to suck, knead, and rotate skin fat to achieve the effect of fat melting and body shaping.



Swivel Head - Large

Suitable for waist, abdomen, thighs, back.



Swivel Head - Small

Suitable for arms and calves.

Face Handle

2.8 Inch Touch Screen



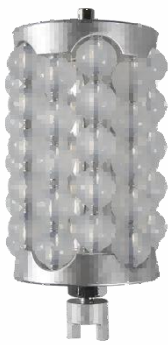
- The facial handle combines vacuum and radio frequency heating to achieve focused heating and precise lifting of the epidermis, dermis and subcutaneous tissue, effectively anti-wrinkle, firm and lift your skin.

2. Inner Ball Roller Appendix

Body Roller Handle



▪ The ball body handle combines mechanical compression micro-vibration and infrared ray technology in one, the reciprocating motion of continuous push-pull kneading on the skin, the tissue will experience some pressure and lifting actions, which helps to tone and firm the skin tissue, reduce cellulite and shape contour.



Silicone Large Head



Metal - Gold Plated Large Head

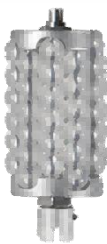


Metal - Silver Plated Large Head

Facial Roller Handle



▪ The facial roller handle combines mechanical compression micro-vibration and infrared technology in one, and the reciprocating motion of continuous pushing, pulling and kneading of the skin will cause the tissue to undergo some pressure and lifting actions, effectively reducing swelling, resisting tissue sagging, and rejuvenating the face significantly.



Silicone Small Head



Metal - Gold Plated Small Head



Metal - Silver Plated Small Head

▪ Silicone is soft and comfortable good for lifting.

▪ Metal is good for lymphatic.

E. Advantage

01 Dual Interface Design

The body handle has a 5-inch color touch screen, and the face handle has a 2.8-inch color touch screen, which is more intuitive and easy to control and adjust parameters.

02 Intelligent Temperature Control System

Set the target temperature of the skin before treatment, and always keep the temperature at the set temperature, which can effectively avoid tissue damage.

03 Patented Liposuction Handle

Ergonomically designed, with excellent grip and convenient operation, it makes the beautician feel more relaxed and less prone to fatigue and strain.

04 Real-time Temperature Detection System

Real-time control of output energy, real-time detection of skin temperature, real-time display of skin temperature during treatment, safe and efficient.

05 Non-invasive

There is no recovery period, and you can do whatever you want, without affecting your normal work and life.

06 Safe & Efficient

Purely physical, no damage to the skin, the best and deepest effect.

07 Long-term Effects

Long-lasting, after treatment, the skin will improve every day due to the continuous production of new collagen. And will achieve more significant and satisfactory results in about 4-6 months.

08 Comfortable Labor-saving Convenient

The treatment process is more comfortable, just like manual liposuction to deal with cellulite, which greatly reduces the pain of treatment.

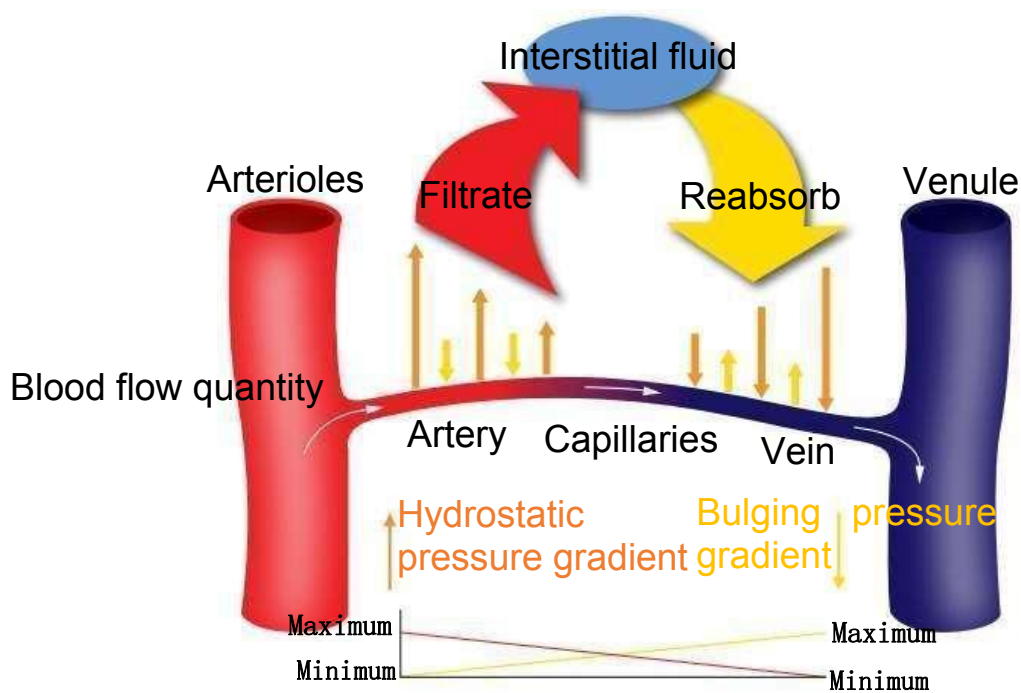
F. Indications

- Body Sculpture: Create beautiful body curves
- Skin Lifting: lifts sagging face/body skin
- Skin Firming: Tightens sagging face/body skin
- Relax tendons and activate blood circulation: dredge meridians and promote blood circulation
- Promote detoxification: flush out toxins and relax
- Dispelling cold and warming the palace: Warming the palace, improving cold and damp physique

G. Taboo crowd

1. Malignant or diseased pigment
2. Light sensitive skin
3. Women's third period
4. Use of non-coagulant drugs
5. Bacterial infectious diseases
6. Immune system deficiency
7. Scleroderma
8. Patients with heart disease, diabetes, epilepsy, etc.
9. There are metal plates, prosthetics, or pacemakers near the treated area;
10. Acute inflammation, goiter, asthma, cancer, etc.
11. There are open wounds or recently sutured wounds in the treatment area;
12. Inflammation or skin disease (dermatitis, rash, eczema, herpes, psoriasis, psoriasis, pyoderma) in the treatment area;
13. Thrombophlebitis; Chronic and Acute Thrombophlebitis
14. Chronic diseases during exacerbation; infectious diseases; neoplastic diseases; mental and neurological diseases.

H. Inner ball roller Machine-Five Collaboration effects



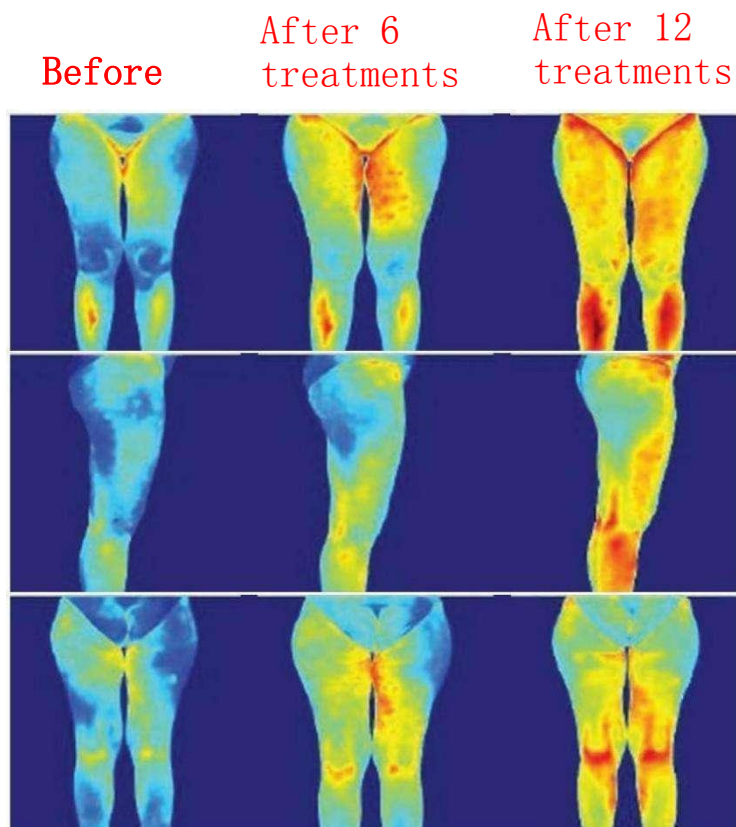
Physiology of capillary circulation

Vascular effect

The balance between hydrostatic pressure and bulging pressure usually allows fluid and nutrients to flow from the arterial side, and fluid and catabolites to re-enter the venous side. The increase in hydrostatic pressure is due to the slowing down of venous outflow, which results in water stagnation in the extracellular fluid, forming edema inside the tissue matrix.

Due to the special arrangement of the spheres, they are in a honeycomb shape, through pressure and lifting movements to obtain gradual tissue compression, achieving the effect of vascular exercise.

The "compression microvibration" therapy allows us to balance the hydrostatic pressure of the veins by reversing the internal metabolism and hemodynamic exchange mechanism.



This activity has been scientifically confirmed by the thermal imaging evaluation on the right. This heat increase effect will lead to "increased skin perfusion and oxygenation, increased tissue metabolism, decomposition of fat aggregates and activation of the anti-inflammatory process of tissue changes. "To reduce and eliminate the pain caused by inflammation.

Drainage effect

Edema is the result of an imbalance between fluid supply and drainage, so water accumulates in the gaps of the organism. The increase in the volume of interstitial fluid leads to the number of stagnant tissues or serous cavities in the latter, which is relevant from a clinical point of view. The most obvious symptom of this condition is swelling, which is manifested as palpable and compressible swelling (pitting). Over time, the retention of toxic substances in the tissues will change the state of the interstitium .

The direction of rotation of the sphere is opposite to the direction of application, which strengthens the activity of the lymphatic system and produces a pumping effect with the gradual movement of the liquid, thereby restoring and maintaining the stability of the blood vessels and the extracellular matrix.

"Compression micro-vibration" therapy is a rhythmic pulsating compression effect, which can stimulate lymphedema, lipoedema and other typical interstitial stasis components, improve deep lymphatic drainage, and eliminate tissue edema and fluid stagnation. It does not cause any skin traction or suction. The use of "compression micro-vibration" therapy in the state of interstitial stasis is more effective than manual lymphatic drainage.

Toning to relax muscles and relieve pain

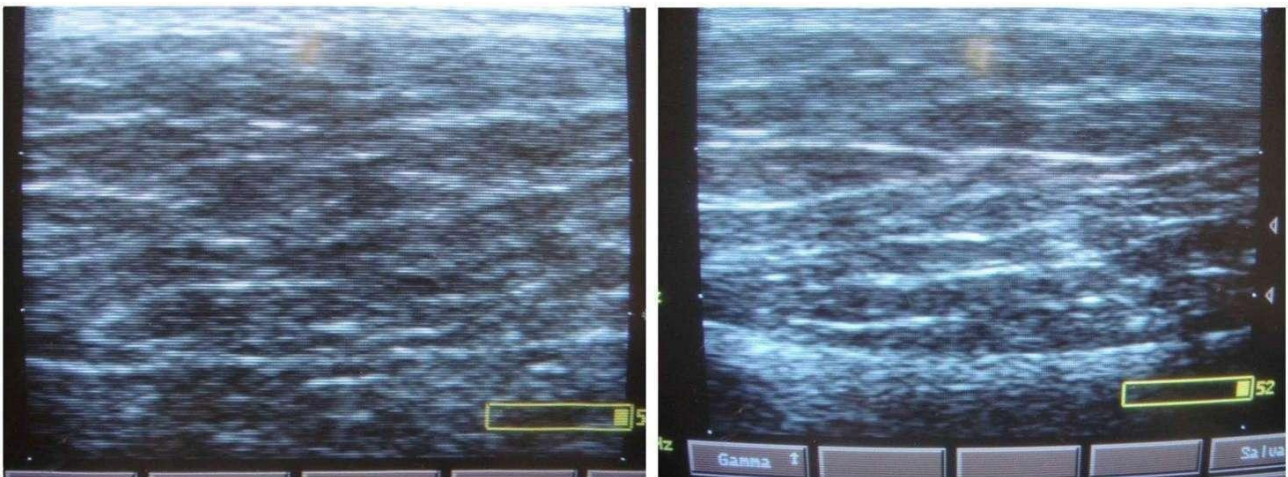
This mechanical rotation exerts rhythmic pulsating compression on the tissues, which in turn generates vibration stimulation, so that the stiff and sore deep muscles are fully soft and stretched, thereby eliminating pain and contractures. The non-invasive "compression micro-vibration" patented system is more special and in-depth than manual treatment.

In addition, the compressed micro-vibration also relieves the simulated contraction action of facial muscles. Vascularization increases. Vascularization allows fibroblasts to naturally stimulate the production of collagen, elastin and hyaluronic acid, making tired, dull or sagging skin tone. Rejuvenate and re-awaken your natural beauty. This treatment works deep in the skin, conditioning facial muscles, relaxing contracted muscles (expression lines), fighting tissue sagging and reducing the appearance of wrinkles.

Remodeling effect

Due to the synergy between mechanical compression micro-vibration and infrared rays, it improves blood circulation and lymphatic flow in the tissues, breaks down fat aggregates and fibrous membranes, reduces cellulite, improves cellulite, makes them less hardened and makes the skin more Firm and smooth. Therefore, it can reduce blemishes and produce remodeling effects from the first few treatments.

This activity is amplified by the response of the underlying muscle layer, which provides active resistance and strengthens the response action. In this way, it can also cover the 24 most ingrained cellulite types and the most serious conditions, such as changes in the adipose tissue of the chest or hip. These activities determine the local skin remodeling, which is conducive to the physiological reorganization of the tissues. Thanks to blood vessels, metabolism and purification activities, as well as remodeling the connected system.



Before

Ultrasound examination showed tissue remodeling after 6

Clinical observations have shown that compression microvibration therapy is an effective treatment method for stimulating blood volume, increasing oxygenation, improving lymphatic drainage and improving microcirculation. This therapy is also an ideal method for treating venous stasis and eliminating toxins.

I. Effect Comparison Chart



Before

After



Before

After



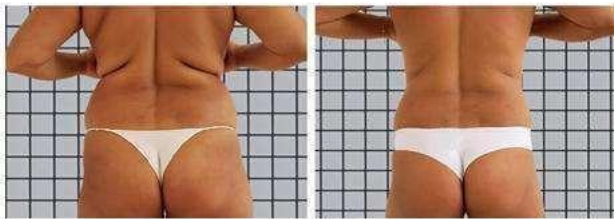
Before

After



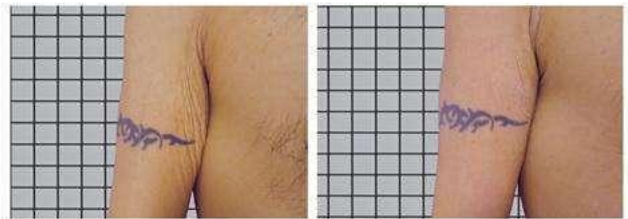
Before

After



Before

After



Before

After



Before

After



Before

After



Before

After



Before

After



Before

After



Before

After



Before

After



Before

After

Before

After



Before

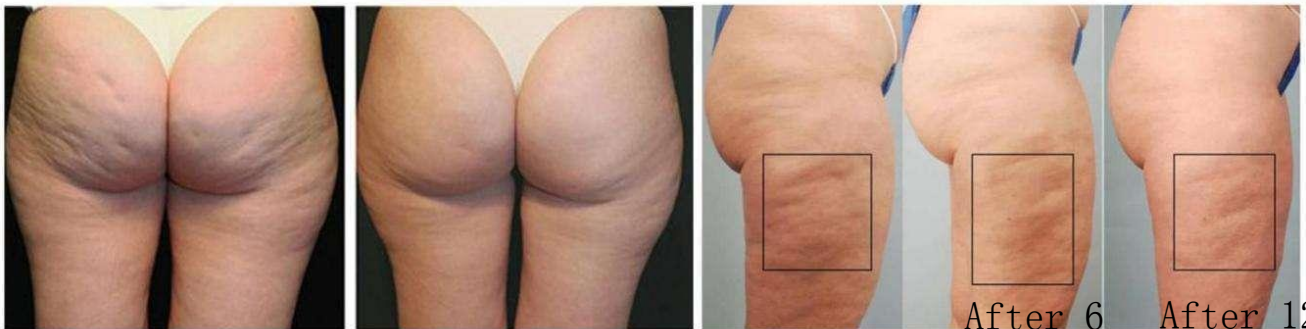
After

Before

After

Before

After



Before

After

Before

After 6
times

After 12
times



Before

After

Before

After



Before

After

Before

After



Before

After



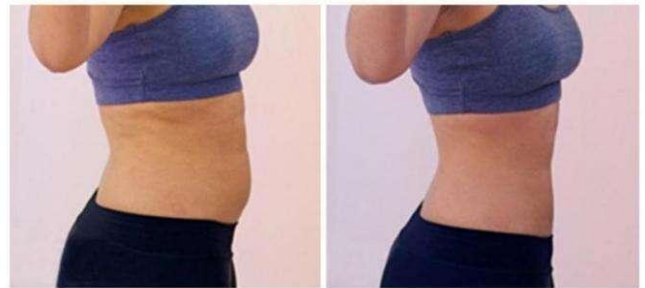
Before

After



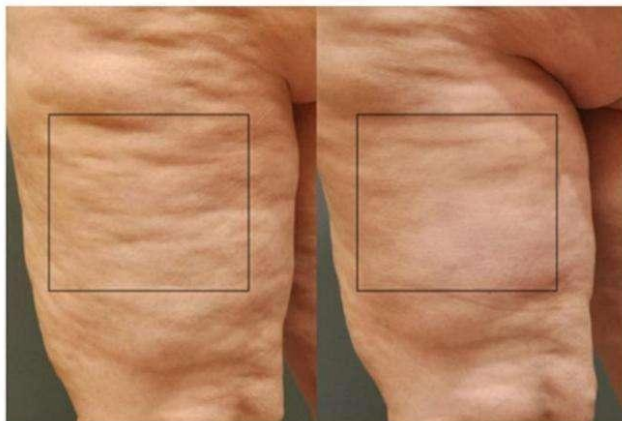
Before

After



Before

After



Before

After



Before

After



Before

After



Before

After

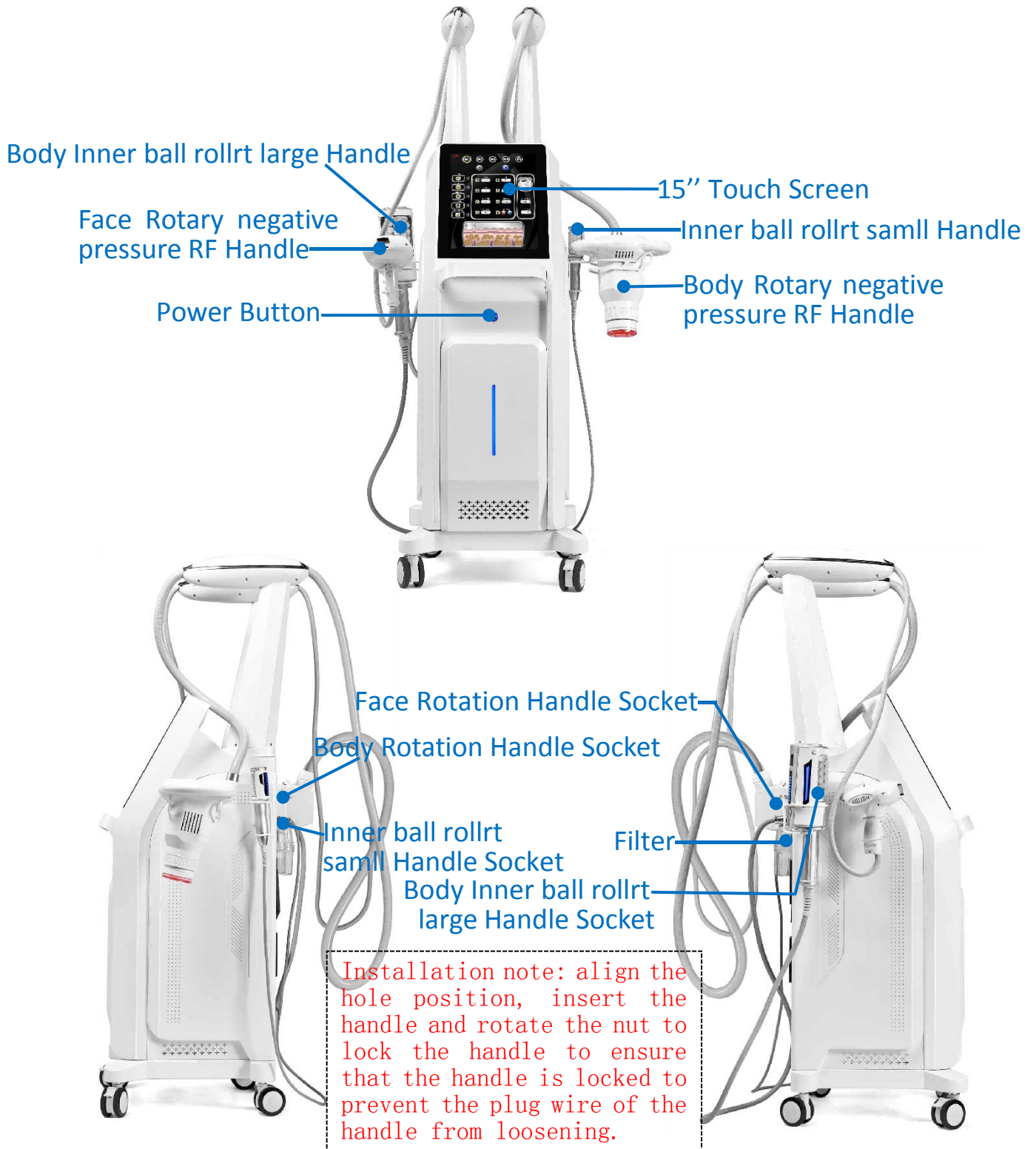
J. Technical Parameter

| | |
|--------------------------------|--|
| Product Name | FOUR-IN-ONE (Rotary Negative Pressure RF Machine+ Inner ball rollrt Machine) |
| Touch screen | 15 inch |
| Radio frequency | 6MHz |
| Vacuum Negative Pressure | 10-80KPA |
| Angle of rotation | 10-180° |
| Photon | Red and blue double light |
| Inner ball rollrt handle speed | 675rpm |
| operating voltage | AC110V~220V±10%, 50Hz-60Hz |
| power | 10-400W |
| Airbox size | 63×76×118cm |
| Gross weight | About 79.3kg |

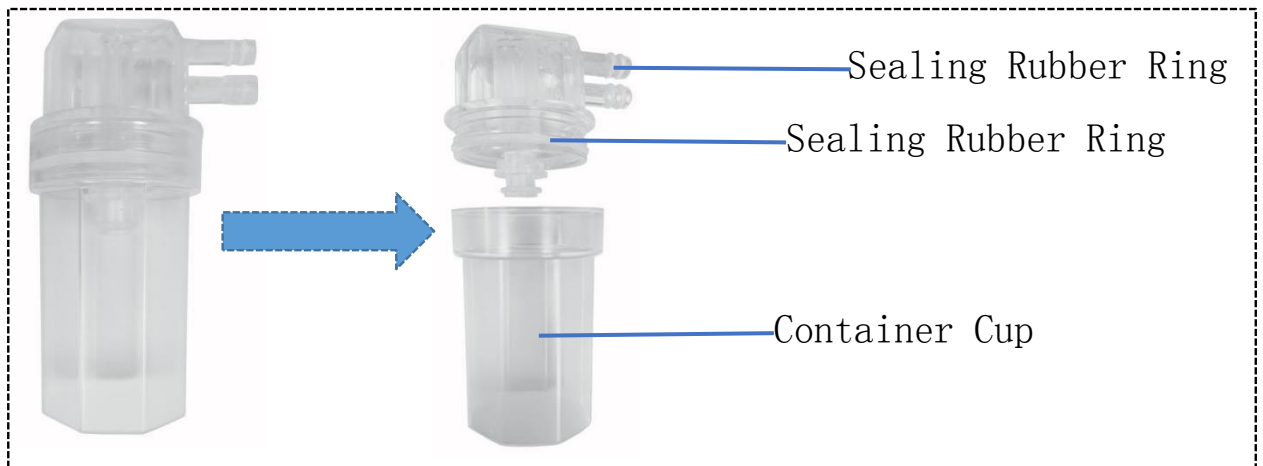


K. Product Instructions

1. Installation: Align the handle with the handle socket on the back of the device, insert and place it;
2. Insert the power cord into the rear socket of the device, turn on the power and turn on the power switch, and then press the power button to start the device.



3. Filter Indication and Maintenance::



- How to disassemble: Pull down while rotating to twist out the container cup.
- Installation method: Push up while rotating to install the container cup.

(If it is difficult to install and insert, it is recommended to wipe a little oil or water before installing and inserting)

- Notice! Before each use, please check the filter cup for foreign matter or water, please clean it before use.
- Notice! When twisting out the container cup to clean, pay attention to the sealing rubber ring between the cup body and the filter body, and check whether the rubber ring is damaged or displaced. If the rubber ring is damaged, please replace it with a new one. It snaps into the groove and installs flat to avoid air leakage!

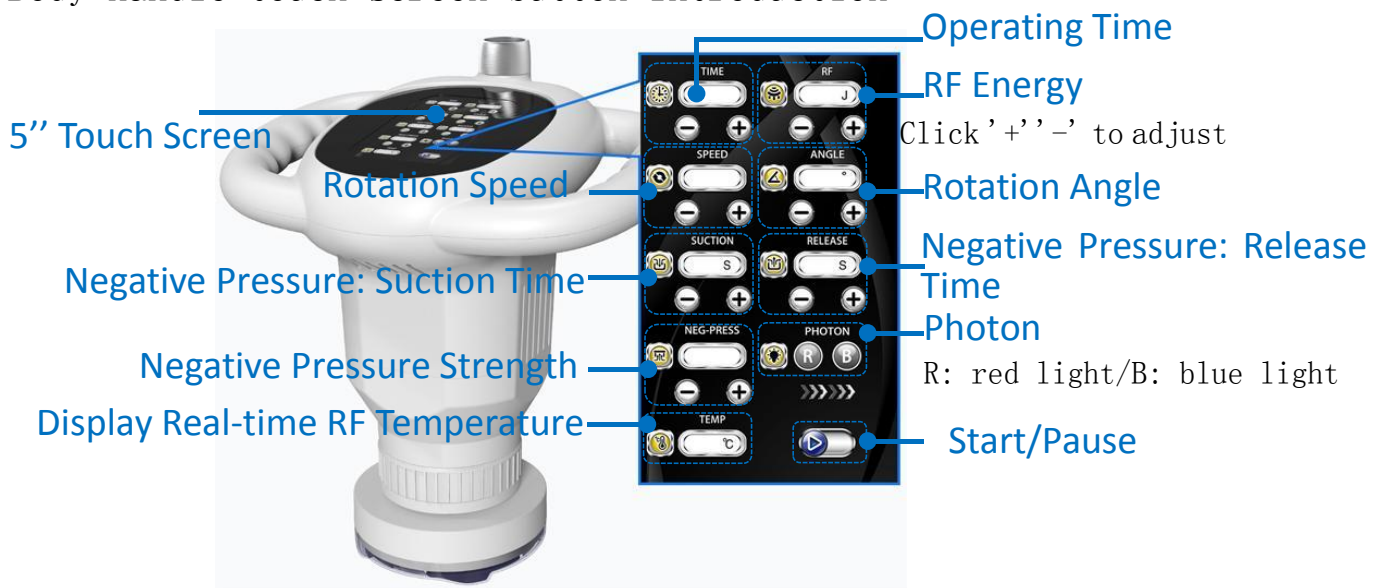
4. Plug and Unplug Precautions:



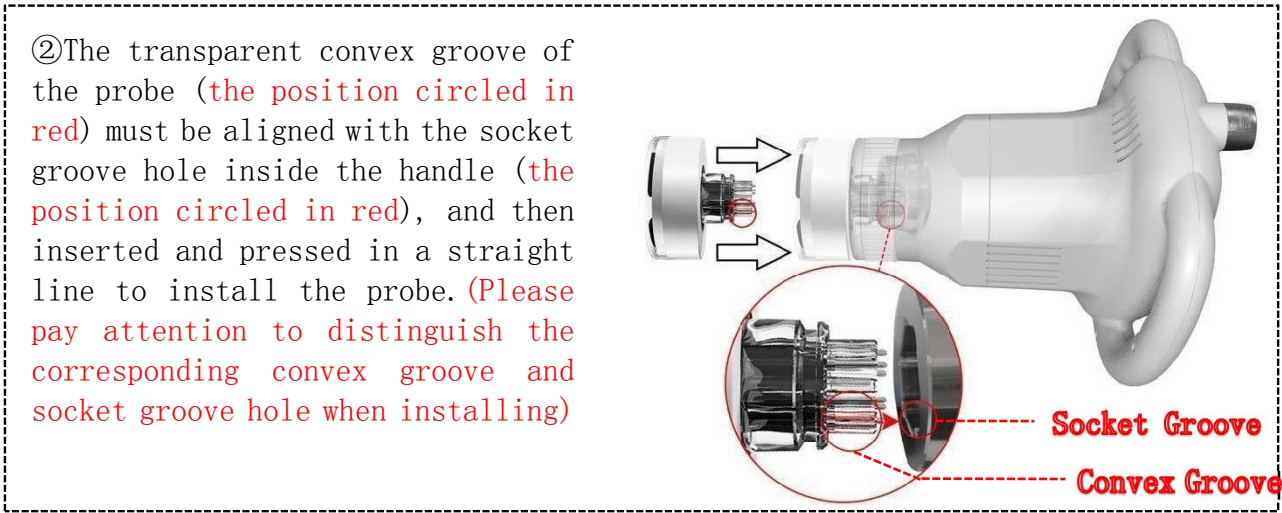
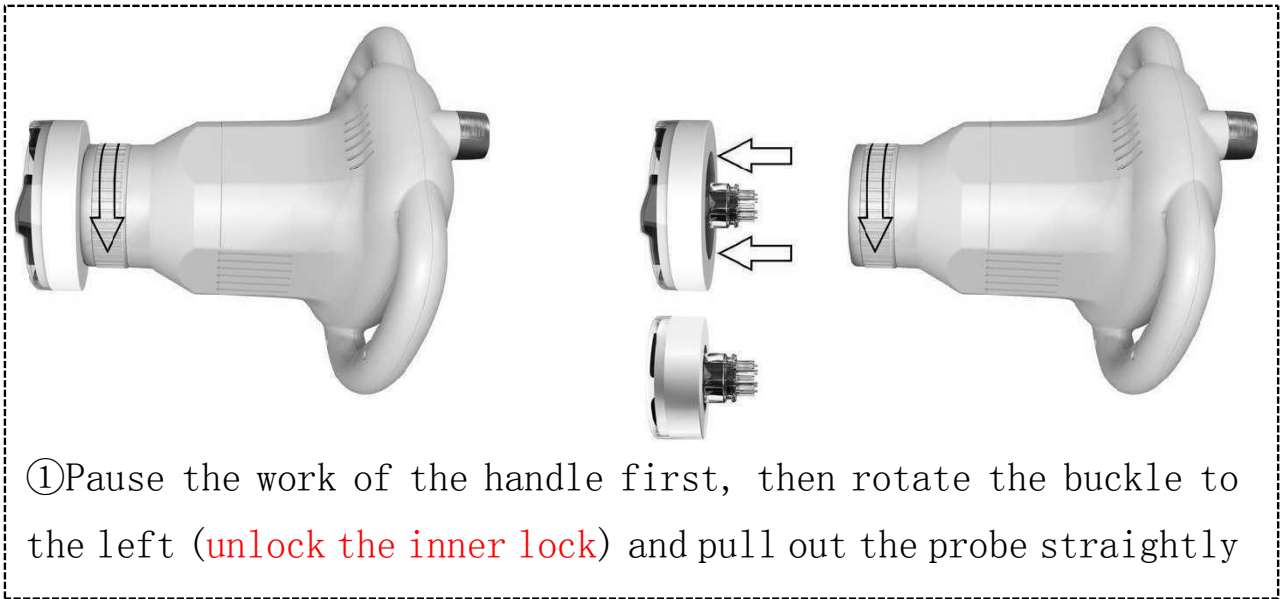
- Notice! Before each installation, check whether the black apron (Position 1, 2, and 3 indicated by the circle) is damaged. If it is damaged, a new apron must be replaced, snap it into the groove and install it flat to avoid air leakage.
- Notice! Only when the device is turned off or paused can the handle be plugged in or replaced.

5. Body Handle Indication

- Body handle touch screen button introduction

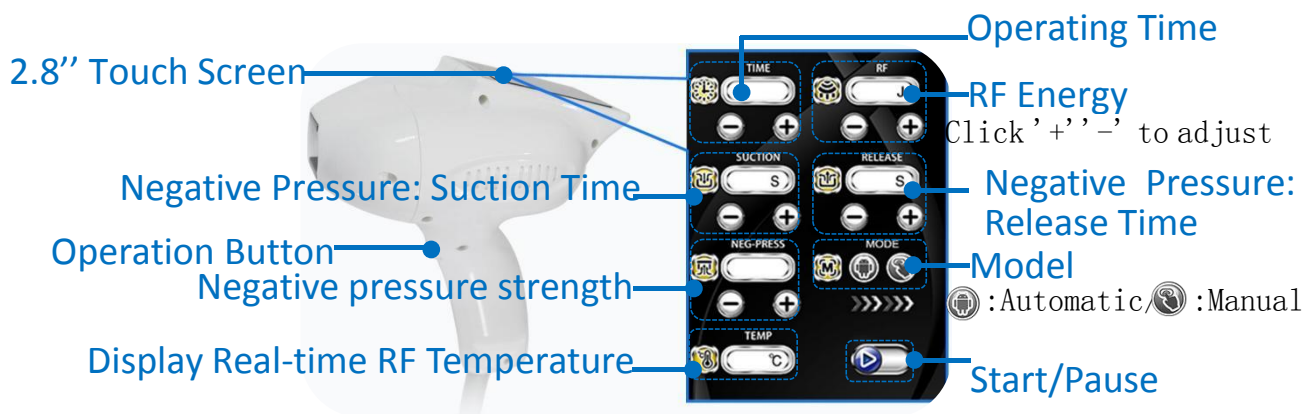


- Probe replacement and installation are shown in the figure below:



6. Face handle indication

- Introducing the Touch Screen Buttons on the Face Controller



• Operation Button Description:

① When the "🤖" automatic mode is selected, after clicking "▶" to start, you only need to press the operation button on the handle to work continuously at intervals of sucking and releasing.

② When selecting "🌐" manual mode, after clicking "▶" to start, you need to press the operation button on the handle once to operate, and after sucking and releasing, you need to press the operation button on the handle again.

L. Instrument Interface Button Introduction

1. After starting up, the function selection interface (Figure 1) will appear, Select the corresponding function interface according to the icon.



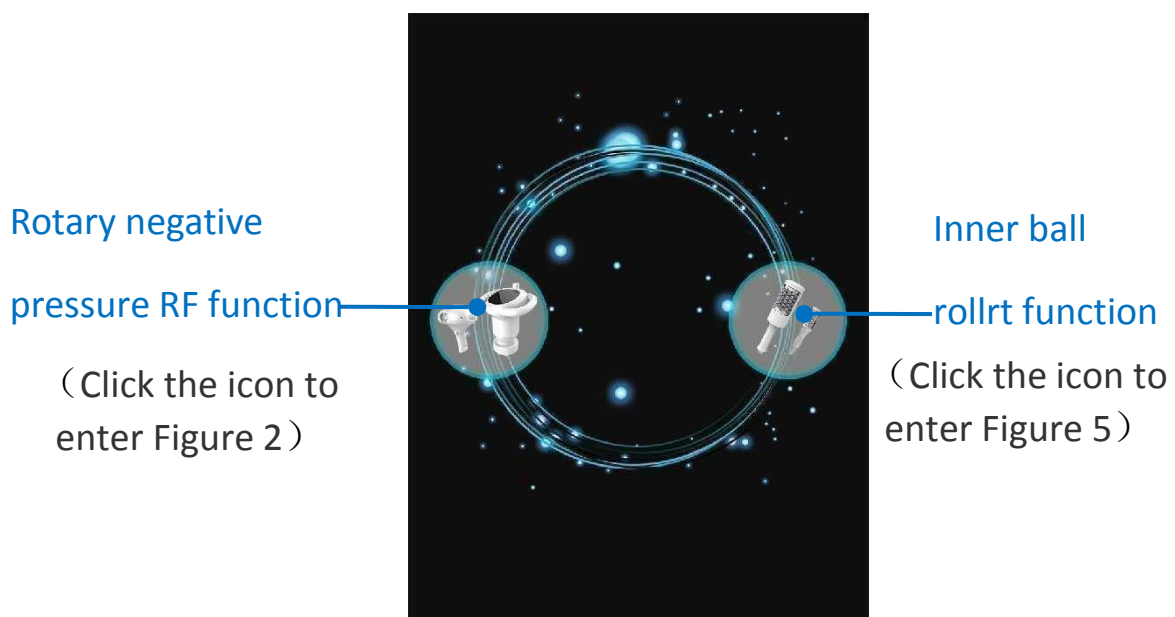
- click  to enter (Figure 2) the Rotary negative pressure RF interface .
- click  to enter (Figure 5) the Inner ball rollrt Dual-control & Single-control interface .

Figure 1: Function selection Interface




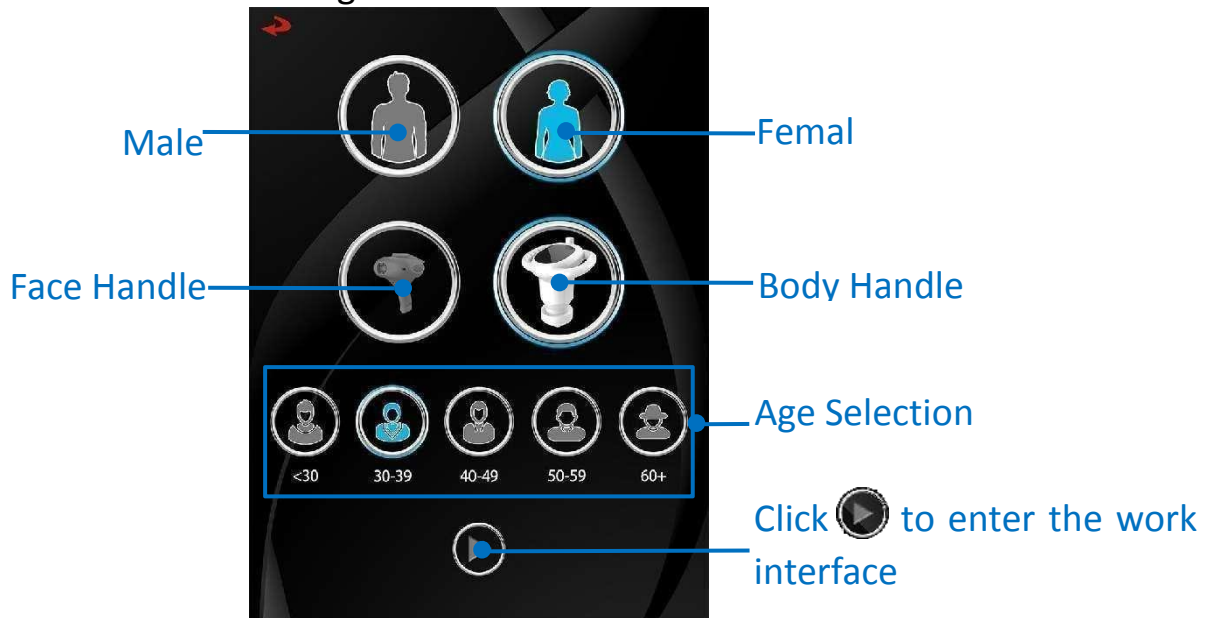
2. Select to set (male or female, age) user information in Figure 2; In Figure 2, select the handle icon that needs to be worked, and click  to enter the work interface.

Figure 2: Interface





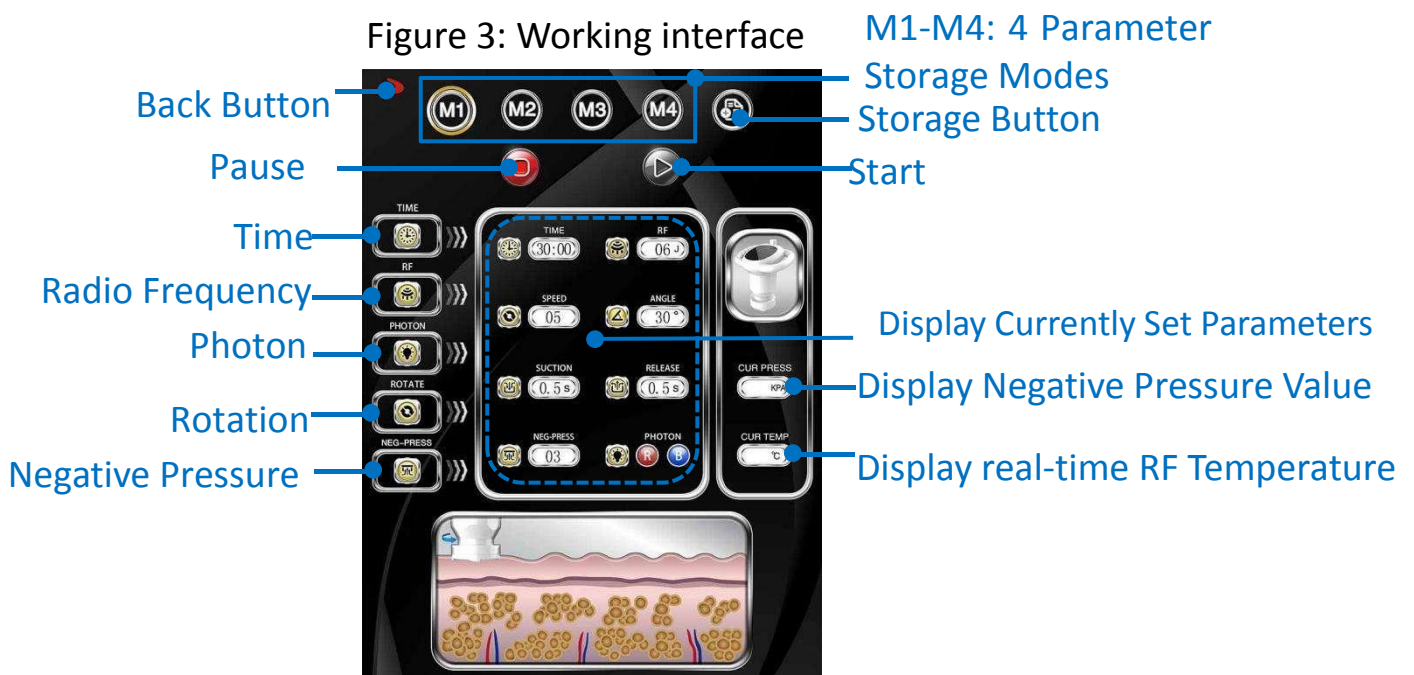














3. Select  the handle icon in Figure 2, and then click  to enter the working interface (Figure 3).

Figure 3: Working interface





- **【M1】 – 【M4】** Indicates the selection of 4 parameter storage modes or recall parameters. You can customize the settings to store ideal parameters for later recall. Click **【】** to save the parameter storage.
- Click **【】** Indicates returning to the previous interface.
- Click **【】** turn into **【】** Indicates the device starts to work.
- Click **【】** turn into **【】** Indicates pause, the device is in standby state.

- Click “****” icon to enter to set working hours: click **【】** **【】** Addition and subtraction adjustment, **【】** TIME:Time, range 01-90 minutes.

- Click “****” icon to access RF adjustment: click **【】** **【】** Addition and subtraction adjustment, **【】** RF: Radio frequency, range 00-10 gears, refer to the recommended file 03-05 gears.

If you feel that the RF energy is not enough, you can slowly fine-tune it until the experiencer can accept it.












- Click “****” The icon enters the red and blue dual light setting: **【】** PHOTON:For Photon, click the R and B icons to light up to turn it on, and double-click it to turn it off.



Click **【】** R icon becomes **【】** Indicates that the setting turns on the red light;

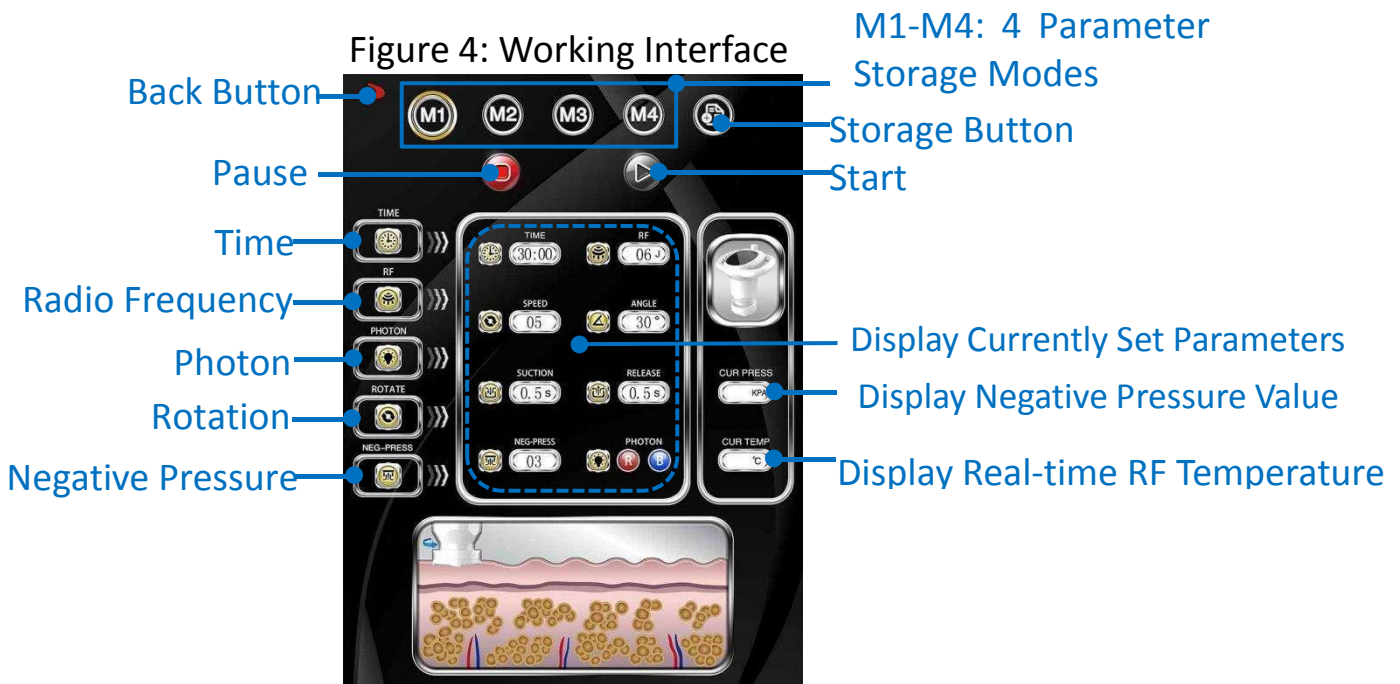
Click **【】** B icon becomes **【】** Indicates that the setting turns on Blu-ray.











Red photons promote blood circulation and nourish skin, improve cell activity, while blue photons whiten, calm and soothe, antibacterial and anti-inflammatory.

Two photons can also be used simultaneously. Choose according to the skin type of the treatment area.


- Click “” icon to enter the rotation parameter setting: Click   Addition and subtraction adjustment,  SPEED:Rotation Speed, The range is 01-10 files; refer to the suggested file 03-08.  ANGLE:Rotation angle, range 000-180° ; reference suggestion 60° -90° .
- Click “” icon to enter the negative pressure parameter setting: Click   Addition and subtraction adjustment,  NEG-PRESS:Negative pressure strength (suction size), range 01-08 files; refer to the suggested 02-05 files.  SUCTION:Suction time, range 0.5s-3.0s (seconds); refer to the suggestion 1-2s.  RELEASE:Playing time, the range is 0.5s-3.0s (seconds); refer to the suggested 0.5-1s.

4. Select  the handle icon in Figure 2, and then click  to enter the working interface (Figure 4).







- **【M1】 — 【M4】** Indicates the selection of 4 parameter storage modes or recall parameters. You can customize the settings to store ideal parameters for later recall. Click  to save the parameter storage.
- Click  Indicates returning to the previous interface.
- Click  turns into  Indicates that the device is started.
- Click  turns into  Indicates pause, the device is in standby state.
- Click “  ” icon to enter to set working hours: Click   Addition and subtraction adjustment,
 **TIME:**Time, range 01-90 minutes.


- Click “” icon to access RF adjustment: Click   Addition and subtraction adjustment,


 RF:Radio frequency, range 00-10 files, refer to the recommended file 03-05.


If you feel that the RF energy is not enough, you can slowly fine-tune it until the experimenter can accept it.


- Click “” icon to enter the negative pressure parameter setting: Click   Addition and subtraction adjustment,





 NEG-PRESS:Negative pressure strength (suction size), range 01-08 files; refer to the suggested 02-05 files.

 SUCTION:Suction time, range 0.5s-3.0s (seconds); refer to the suggestion 1-2s.





 RELEASE:Release time, range 0.5s-3.0s (seconds); refer to the suggestion 0.5-1s.

- Click “” Icon entry mode selection:

 MODE:Mode, click to select the corresponding icon to set the automatic or manual mode.

Click  icon becomes  Indicates that the automatic mode is set: When “” automatic mode is selected, Click “” After starting up, you only need to press the operation button on the handle,

and then you can work continuously at intervals of suction and release.

Click  icon becomes  Indicates setting manual mode:
When “” manual mode is selected, Click “” After starting, you need to press the operation button of the handle once to operate, and after sucking and releasing, you need to press the operation button of the handle again.


5. In Figure 1, click  the handle icon to enter the interface of selecting Dual-control & single-control of the ball rollrt (Figure 5).

Figure 1: Function selection Interface

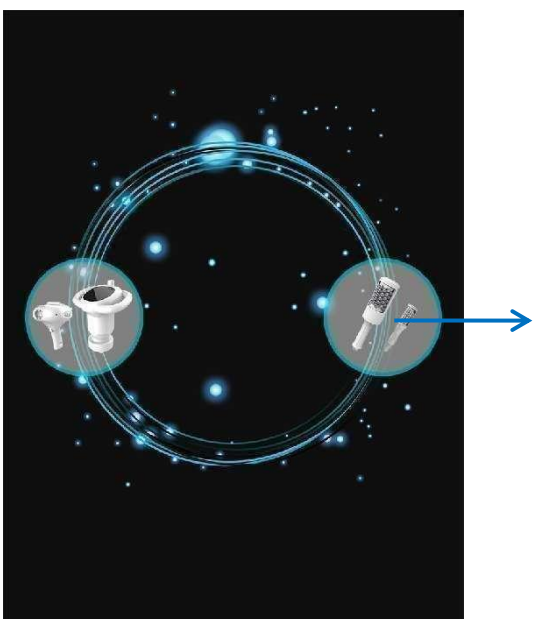
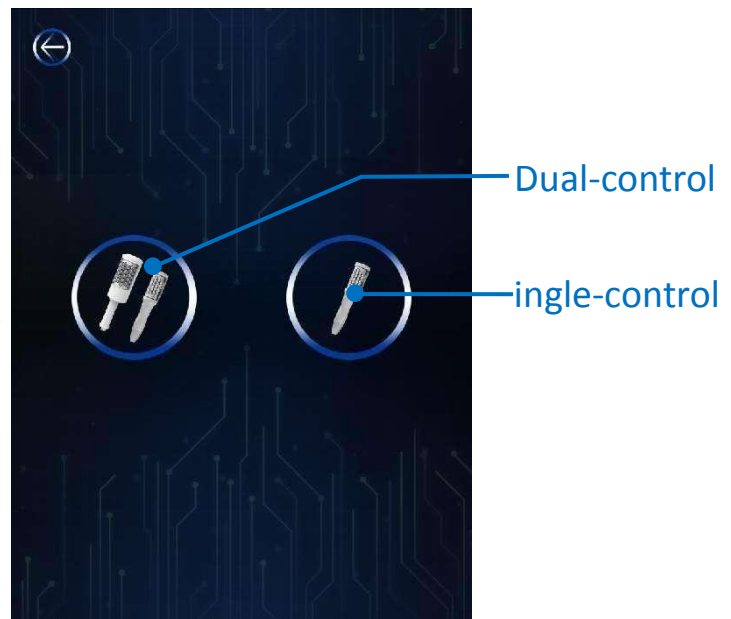




Figure 5: Dual-Control & Single-Control Interface



①Click  enter (Figure 3) Dual-channel dual-control work interface,
The two handles can work separately and independently, or the two handles can work at the same time, and the two handles can independently adjust different parameters.

②Click  enter (Figure 4) Dual-channel single-control working interface: Only one handle works.


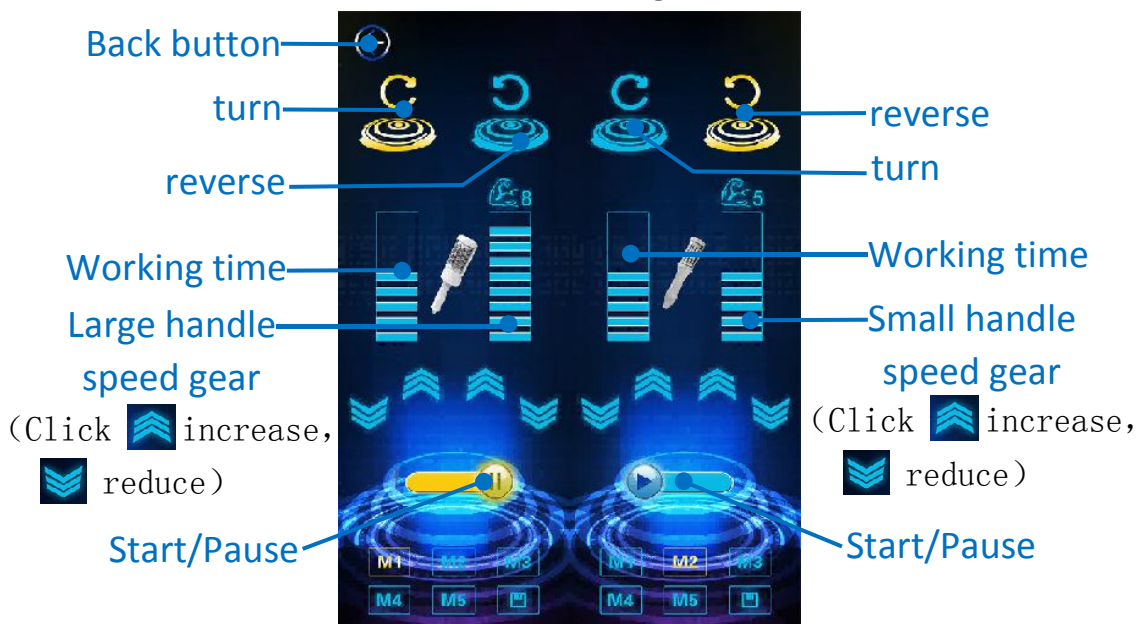
6. In Figure 5, click  the handle icon to enter the interface of selecting Dual-control of the ball rollrt (Figure 6).

Figure 6: Dual-channel dual-control working interface




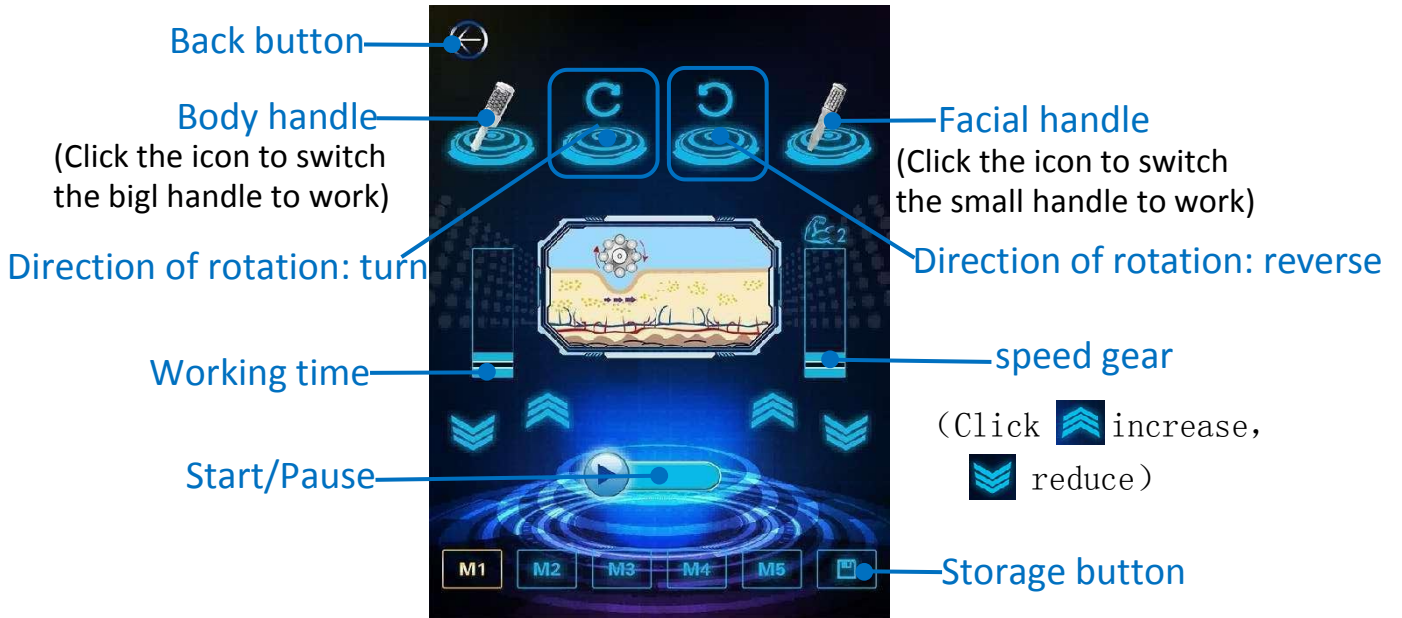


7. In Figure 5, click  the handle icon to enter the interface of selecting single-control of the ball rollrt (Figure 7).


Figure 7: Dual-channel single-control working interface




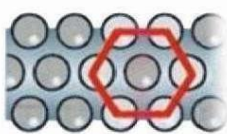
• The keys of the work interface are introduced as follows:

Click on  Switch the big handle to work;

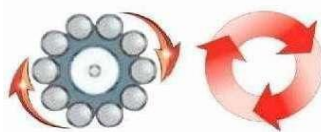
Click on  Switch the small handle to work;

Click on  Switch the direction of rotation: Clockwise rotation (Abbreviation: clockwise rotation).

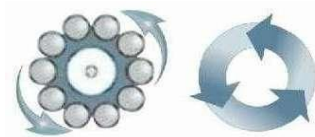
Click on  Switch the direction of rotation: Rotate counterclockwise (Abbreviation: reverse).



Honeycomb sphere arrangement



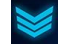


Clockwise rotation (Abbreviation: clockwise rotation)





Rotate counterclockwise (Abbreviation: reverse)



【90:00】 operating time:90 mins,1-9 ↑ gear, 10 minutes for each additional gear;



【】 Rotating speed:0-9gears, adjust the speed, click on 【】 increase, 【】 reduce;

The rotating speed of small handle: First gear 225rpm, Second gear 345rpm, Third gear 375rpm, Fourth gear 420rpm, Fifth gear 480rpm.Sixth gear 525rpm, seventh gear 600rpm.eighth gear 645rpm,ninth gear 675rpm.

The rotating speed of large handle: First gear 172rpm, Second gear 240rpm, Third gear 307rpm, Fourth gear 375rpm, Fifth gear 450rpm.Sixth gear 510rpm, seventh gear 585rpm.eighth gear 625rpm,ninth gear 675rpm.

Click on 【】 the button becomes 【】 to indicate that the instrument starts to work.

Click on 【】 the button becomes 【】 to indicate that the instrument pause to work.

【M1】 — 【M5】 indicate 5 parameter storage modes or options for recalling parameters ,click on 【】 ,save parameter storage. Click on 【】 show to return.

M. Rotary negative pressure RF-Operation Steps

1. You should remove the jewelry you are wearing, and be naked (or wear thongs, or wear disposable underwear).
2. Wipe and clean the probe, wipe it dry and keep it dry to ensure that there is no moisture.
3. Before operation, clean the skin.
4. Before operation, apply massage essential oil products on the implementation site to enhance the operation effect.
5. Choose the appropriate liposuction head according to the obesity degree of the caregiver: Generally, the small size is suitable for arms and calves. The large size is suitable for the midsection, thighs and back.
6. Set Parameter Values (RF radio frequency 03-05 gear, negative pressure 00-05 gear, adsorption time 1-2s, release time 0.5-1s, rotation angle 60°-90°, rotation speed 0.5-1s), RF radio frequency recommendation Start at a low level and then adjust according to the feedback from the experiencer. It is recommended to fine-tune to avoid scalding the skin. Set the photon color; red photon promotes blood circulation and nourishes skin, improves cell activity, blue photon whitens, calms and soothes, antibacterial and anti-inflammatory. Two photons can also be used simultaneously. Choose according to the skin type of the treatment area.
7. Set the parameters and click the "start button" to operate, and move close to the nursing site.

Note: Before the operation, the beautician first tries the negative pressure and energy on his own hands.

8. **Body Operation:** From the outside to the inside, from the bottom to the top, slowly move in parallel (note that the hands can move together according to

the rotation angle), and it is recommended to operate on one part for about 15-40 minutes.

Face Operation: From the chin to the front of the ear, from the corner of the mouth to the middle of the ear, from the nasolabial fold to the temple, suck and release and then move, while soothing with the other hand, the operation time is about 15-20 minutes.

9. During the operation, it is necessary to constantly ask the user about the comfort level and the adjustment of the energy level, and adjust the appropriate "RF radio frequency", "suction time", "negative pressure", "rotation angle parameters" etc. according to the user's feedback parameters to ensure that the experiencer accepts the experience in a pleasant state.

10. Remember: It is forbidden to stay in a certain part without moving.

11. After the operation, wipe off the massage cream or essential oil left on the cleansed area; such as: apply a mask on the face.

12. Rotary negative pressure RF-Nursing Course

(1) Facial interval time: generally recommended once a week.

Course setting: 5-10 times/1 course of treatment.

(2) Body interval time: 1-2 times a week is generally recommended.

Course setting: 8-15 times/1 course of treatment.

(3) The operation time of the whole body in one course of treatment:

1hour 30min is generally recommended.

Whole body operation sequence: Back-Arm-Leg-Hip-Abdomen;

The abdomen is generally recommended for 40 minutes, with an average of about 6 minutes for each technique;

It is generally recommended to operate the whole leg including the thigh and calf for 1 hour, and it is generally recommended to operate for 20-30 minutes only for the thigh or calf;

Shoulders is generally recommended for 10-15 minutes;

Butterfly sleeves are generally recommended for 15-20 minutes;

The buttocks are generally recommended for 30 minutes.

(4) Operation View



Be worth noting: Don't be in a hurry for the effect, because the operation and nursing process is a process of fat dissolution and body contour sculpting, which requires metabolism to excrete fat cells from the body. After operating the instrument, drink plenty of water and sweat more to strengthen metabolism to achieve weight loss and shaping the goal of.

About postpartum care: When the surgical site is no longer painful and the postoperative sensory nerves have fully recovered, normal delivery usually takes 3-6 months, and radiofrequency liposuction care can only be performed at least 8 months after caesarean section. In addition, the cesarean section should avoid the location of the incision, and the abdomen can be operated for at least one year.

N.Inner ball rollrt-Operation Steps

1. The accessories worn on the body should be removed, naked (or wear thongs, or wear disposable underwear).
2. Unload the roller sphere built in the handle, wipe and clean the sphere (do not immerse it in liquid), and wipe it dry before putting it in the massage roller to ensure that the sphere is free of any moisture.
3. Clean the skin;
4. Before the operation, apply massage cream or essential oil products to the implementation site to enhance the operation effect;
5. Set the direction of the speed (the direction of rotation is opposite to the direction of application) and adjust the intensity of the speed;
6. Use the roller handle to treat the entire area; hold both ends of the handle with both hands and slowly and gently push and pull. As the sphere automatically rolls, it slowly pushes and fits the skin.
7. After the operation, wipe off the residual massage cream or essential oil on the cleaning site;
8. Such as: applying a mask on the face.
9. After each use, it is recommended to wipe and clean the sphere with saline or alcohol, wipe it dry to keep it dry, and do not immerse it in liquid.
10. Please do not touch the silicone probe with sharp tools to avoid cutting the probe.
11. Note: During the working process of the handle, do not put your fingers into the groove of the handle to avoid pinching your hands.

12、 Inner ball rollrt-Nursing Course

- (1)Facial interval time: 1-2 times a week is generally recommended.Course setting: 6-12 times/1 course of treatment.
- (2)Body interval time: 2-3 times a week is generally recommended.
Course setting: 12-18 times/1 course of treatment.

(3)Operation View

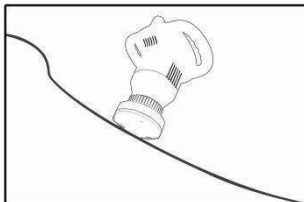


0. Precautions

1.To avoid poor contact, please note that you need to apply massage essential oil products on the operation site before operation.

Note: Do not use paste or the consistency of the product should not be too thick, otherwise it will be easily sucked by negative pressure and block the probe.

2.Handle Precautions:



The 180-degree lipo-rotating head should be close to the skin of the customer, and the bone should be avoided during operation.

3. Remember: It is forbidden to stay in a certain part without moving. It is also not allowed to stay in one area for a long time, and cannot stay for more than 1 minute.

4. Before operation, put the probe on the palm of your hand to test the heat, and you can operate it only when you feel that the energy is moderate.

5. It is strictly forbidden to wear any metal objects on the treatment site.

6. It is forbidden to use functional skin care products and similar exfoliation treatments during the use of the instrument.

P. Instrument Maintenance & Maintenance

1. After each use of the instrument, it is recommended to use 75% medical alcohol or normal saline to disinfect and wipe the cleaning accessories, dry and keep it dry, and do not immerse it in liquid. And keep it properly.

Note: All parts of the instrument made of organic materials (such as accessory hangers, panels, handles, etc.) should not be cleaned with pure alcohol or corrosive solvents.

2. Before use, you must use a plug with a grounding pin, and make sure that the power socket of the instrument is truly grounded.

3. The voltage of the instrument is adapted. If the local power supply voltage is unstable, we recommend that the user increase the power matching regulated power supply.

4. Handle with care when operating the hand tool, and bumping is prohibited. The company will not provide warranty for damage to the hand tool caused by artificial violent bumping.

5. When in use, please do not approach the wall, and keep a space of 30cm around the instrument to facilitate heat dissipation.

6. Do not place it in a humid place or near a water source, and do not expose the instrument directly to sunlight.

7. The instrument is close to a strong heat source, because this may affect the life and normal use of the instrument.

8. Please remove all metal objects on your body first, so as not to affect the curative effect due to unpredictable conditions.

9. When the instrument is not in use, please turn off the power switch of the instrument, and ensure that the total power of the instrument is turned off before use to ensure the safety of electrical products.

10. Use the instrument strictly in accordance with the instructions in the manual or train the operator of the instrument.

Q. Common Malfunctions & Maintenance Method

| No. | Symptoms | Malfunction Analysis | Solution |
|-----|--|--|--|
| 1. | Unable to start (the whole machine has no power) | Whether the power cord plug is not connected properly (poor contact) or whether the power switch is turned on or the power switch is damaged | Re-insert the plug to make it in close contact, or replace the power cord and power socket |
| | | Blown Fuse | Replace the fuse |
| 2. | The output energy is weak/foreign matter enters the operation head | The probe is dirty | Clean the probe |
| 3. | Abnormal rotation of the handle and head | Damaged motor or wiring connection problem | Contact the manufacturer |
| 4. | The handle does not glow or is abnormal | The circuit module is damaged | Contact the manufacturer |
| 5. | Temperature acquisition error | Temperature sensor failure | Contact the manufacturer |
| 6. | Significantly lower energy | The internal parts of the handle are damaged | Contact the manufacturer |

R. Common Problem

What does it do?

- Body SPA

Designed to stimulate lymphatic and blood circulation, it helps to tone and reshape the body, giving a feeling of lightness and health.

- Body reshaping

Designed to remove stubborn fat deposits, it has a natural skin-lifting effect, reshaping the entire figure, giving the body form a new pleasant feeling of harmony, lightness and well-being.

- Improves scars

Improves the quality and elasticity of the skin around all major types of scars: inflamed, uninfamed, old, surgical or traumatic (e.g. C-section), acne with keloid tendency, hypertrophic scar tissue. Apply to all areas of the face and body.

- Anti-Aging

Promotes tissue oxidation and skin regeneration. Smooths wrinkles for younger looking skin.

- Liposuction support

Before: Drains and softens skin tissue, facilitating surgical procedures.

After: Aids in rapid tissue recovery and avoids irregular skin after liposuction.

- Improve lymphedema

Designed to improve blood and lymphatic circulation and promote tissue oxygenation, this treatment provides immediate and long-lasting results, reducing aesthetic and functional recovery time.

- Relieve muscle pain

Relieves muscle tension, also caused by conditions like fibromyalgia, and relieves tissue congestion.

Is it safe?

A non-invasive treatment, it is 100% safe and does not have any side effects.

Does it hurt?

No, it is actually a very pleasant treatment. Most customers say it feels similar to deep tissue massage. The intensity/stress level gradually increases with each treatment and can be adjusted to your desired tolerance. There are no side effects, and you can return to normal life immediately after treatment.

How long is a single treatment?

It is suitable for any part of the body or face, but depending on the size of the area to be treated, **the single time varies from about 45 minutes to 1 hour and 30 minutes.**

How long will it take to see the results?

Usually you can see the initial results after 6 to 12 treatments. According to your physical condition and related lifestyle factors, determine the appropriate number of treatments you need. It is recommended to perform 12-18 treatments to get the best results. In the case of excessive sagging or overweight, 24 treatments may be required. The post-maintenance course can be set once a month. Maintenance packages can be used to further improve results or help maintain existing results.

How to care after treatment?

Use mild products and moisturizing essences and moisturizers.

Can I receive treatment if I have hyaluronic acid fillers?

It is recommended to use hyaluronic acid fillers at least 30 days later. This is to avoid vascularization, which may reduce the effect of the filler.