

# Reveal the sexy body You Deserve

BEFORE



AFTER EMSZERO



BEFORE



AFTER EMSZERO



BEFORE



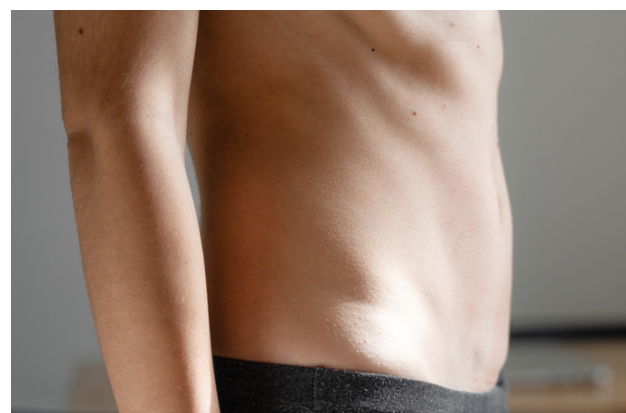
AFTER EMSZERO



BEFORE



AFTER EMSZERO



“Beautiful Design and I love that it's simple to use, so it's been very successful in my spa so far!”

Review from Rejuva Fresh Customer

Ask your provider TODAY!

## Parameters

- Air cooled system
- 5-150Hz Fast Frequency
- Power 5000W
- 13 Tesla High Energy
- Dynamic Temperature Monitoring
- 2 in one Technology: HIEMT+RF
- 2 handles or 4 handles simultaneously



# Get Sculpted

NO SURGERY - NO DOWNTIME



EMSZERO





# EMSZERO Neo

## Body Contouring Machine

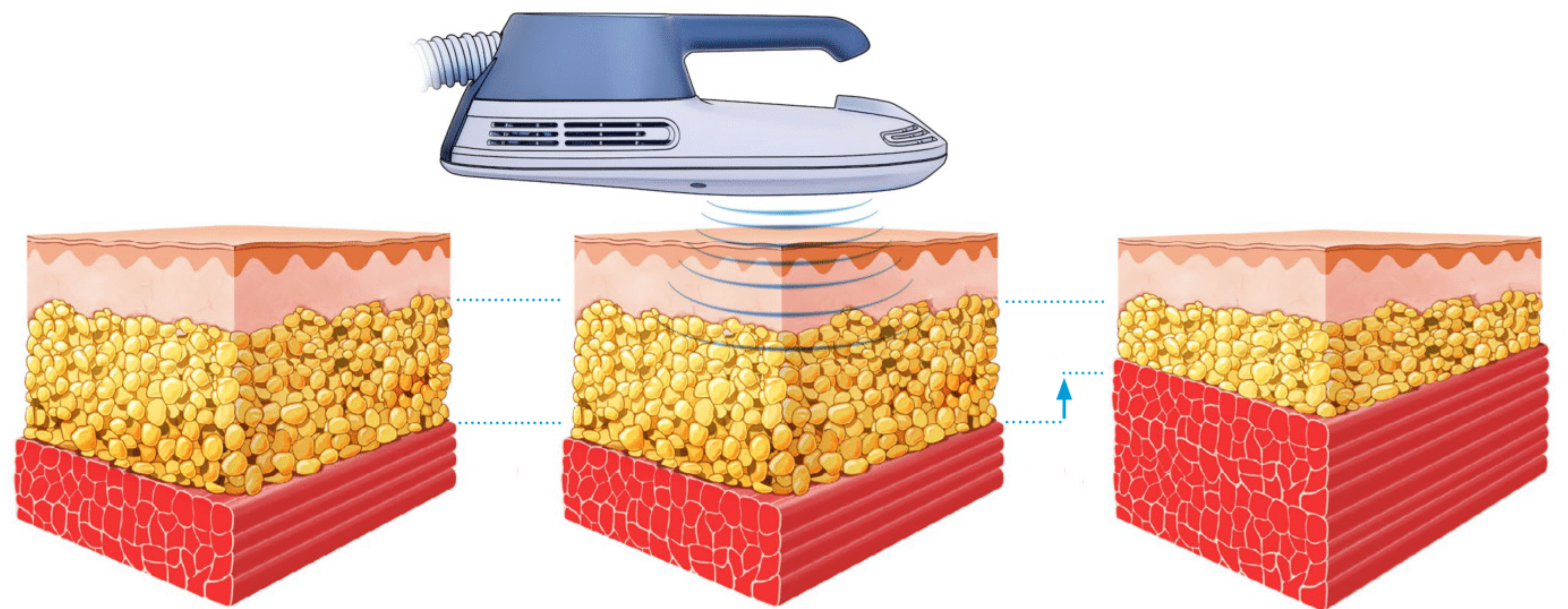
### TO GET AN ATTRACTIVE BODY YOU NEED TO BUILD MUSCLE.

EMSZERO is a powerful non-invasive procedure to build muscle and burn fat. It helps you restore your core and get your flat sculpted abs back.



- **Am I a CANDIDATE?**  
Anyone can benefit from the EMSZERO procedure. Ask your provider for more details.
- **What is the TREATMENT time?**  
30 minutes per treatment with a minimum of 4 sessions spaced at least 2-3 days apart. Your provider will create a treatment plan designed to meet your specific goals. .
- **Is there any DOWNTIME? Any pre/post treatment preparation?**  
EMSZERO is non-invasive and requires no recovery time nor preparations.

- **What does it FEEL like?**  
The EMSZERO procedure feels like an intensive workout. You can lay down and relax during the treatment.
- **Does it really WORK?**  
YES! The technology has been clinically tested for safety and effectiveness.
- **How fast will I see RESULTS?**  
You will begin to feel tangible results immediately after the treatment. Obvious visible results are typically reported 2-4 weeks after the last session and continue to improve for several weeks following the treatment.



**BEFORE**  
Skin, fat and muscle form your overall body appearance.

**DURING**  
The skin remains unaffected while the energy penetrates to fat and muscle layers.

**AFTER**  
This results in substantial improvement of your appearance