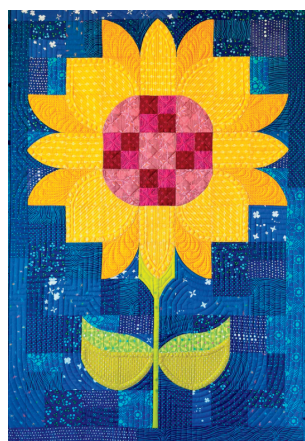
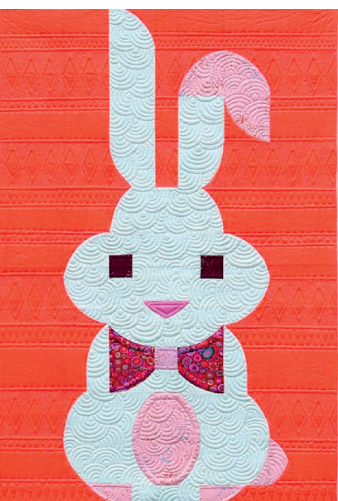


# Learning to Piece Posh Curves Class

## Sewing Basket Supplies

- Sewing machine (*including power cord and foot pedal!*)
- Rotary cutter and various rulers
- Pins
- Sewing machine needles
- Seam ripper
- Thread
- Tape measure
- Marking pencil
- Wonder Clips
- Snips and medium scissors



## Supplies Needed

- Any Posh Pattern (Bunny, Petals, Pocus, Lucky, Gobble, Sunflower, Jack-O)
- QCR Mini Ruler
- Rulers (8-1/2" x 24" and 6-1/2" square)

## Fabric Requirements

- Follow fabric requirements on pattern
- Complete all basic cuts **BEFORE** class
  - *do NOT use the QCR Mini Ruler before class!*

**Nebraska Quilt Company**  
330 N. Main St.  
Fremont, NE 68025

### Store Hours

Tuesday-Friday: 10a-5p, Saturday: 10a-4p, Sunday and Monday: CLOSED

