



SERVING THE FOOD INDUSTRY SINCE 1951

## Commercial Electric Stainless Steel Bowl Cutter

ITEM: 47711  
47776

Model: FP-IT-0006  
FP-IT-0012

#47711  
10 Lbs Capacity



#47776  
20 Lbs Capacity



**Elevate Your Culinary Experience with an innovative Food Processor**



Cut, chop, grind and mix a variety of foods such as meats, cheese, vegetables, nuts, and breads with ease using this cutting-edge tool.



Designed to streamline the cooking process, this bowl cutter features a sleek design and a powerful motor for a seamless cooking experience.



All stainless-steel construction is corrosion resistant providing durability and appliance longevity.

Telephone: 1-800-465-0234

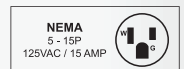
Fax: (905) 607-0234

Email: [sales@omcan.com](mailto:sales@omcan.com)

Website: [www.omcan.com](http://www.omcan.com)



Authorized Dealer

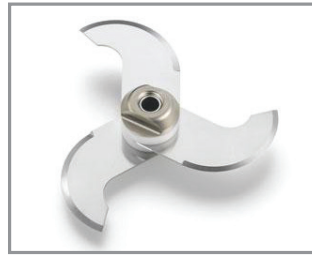


## KEY FEATURES



### Convenience

The lid with an open mouth design allows for easy addition of food without interrupting the machine.



### Efficiency

With a powerful ventilated asynchronous motor running at 1680 rpm, the 3-blade hoop can make up to 5000 cuts per minute. This significantly reduces cooking processing time.



### Non-drip feet

3.6" legs with rubber feet guarantee stability on any surface, preventing tipping and other dangerous situations.



### Easy-to-clean

The blade, bowl and lid can be quickly detached without tools needed for convenient cleaning to meet hygiene and food-safe standards.



### User-friendly

With IP67 waterproof and greaseproof ON/OFF button ensures easy usage



### Secure Operation

The machine's body and cover are tightly connected by interlock mechanism for safe operation.

## SPECIFICATION

Item	47711	47776
Bowl Capacity	10 lbs	20 lbs
Power	750 W / 1 HP	1,400 W / 2 HP
Current	6.8 Amp	12.6 Amp
Electrical	120V / 60Hz / 1Ph	120V / 60Hz / 1Ph
Body Material	Stainless Steel	Stainless Steel
Plate Hub Rotation	1,680 rpm	1,680 rpm
Net Dimensions (WDH)	32.75" x 23" x 18.63" 831.9 x 584.2 x 473.2 mm	35.5" x 26.75" x 20" 901.7 x 679.5 x 508 mm
Gross Dimensions (WDH)	32" x 48" x 34" 812.8 x 1219.2 x 863.6 mm	32" x 48" x 34" 812.8 x 1219.2 x 863.6 mm
Net Weight	134 lbs/ 60.8 kg	156 lbs/ 70.8 kg
Gross Weight	220 lbs/ 99.8 kg	240 lbs/ 108.9 kg

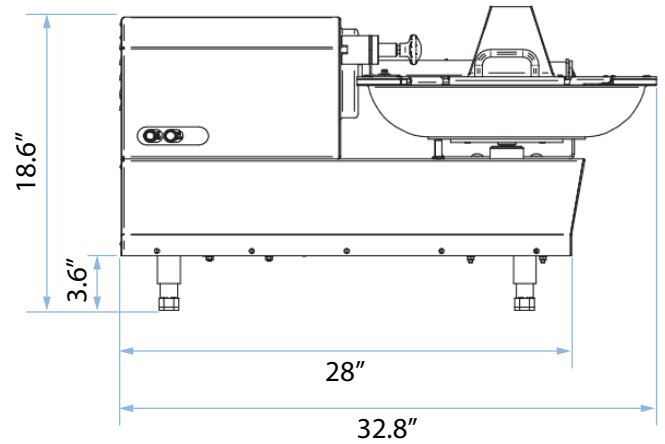
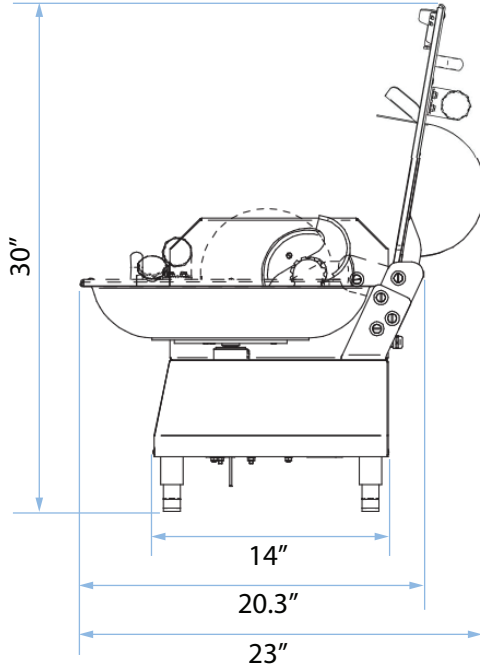
# Commercial Electric Stainless Steel Bowl Cutter



## **DIMENSIONS**

(Measurements in diagrams are in inches)

#47711 - 10 Lbs Capacity



#47776 - 20 Lbs Capacity

