

DELAY



UTOPIA

WARM & VINTAGE ANALOG VOICED TAPE ECHO DELAY

TAPE ECHO DELAY ENHANCED BY A DEEP MODULATION MADE TO MAGNIFY YOUR SOUND,
FROM ATMOSPHERIC SOUNDSCAPES TO THE CRAZIEST DRIVING SOLO

DESIGN



MAHOGANI
SANDING : 8
VARNISHING : 6
LASER ENGRAVED
DIE CAST ALUMINIUM

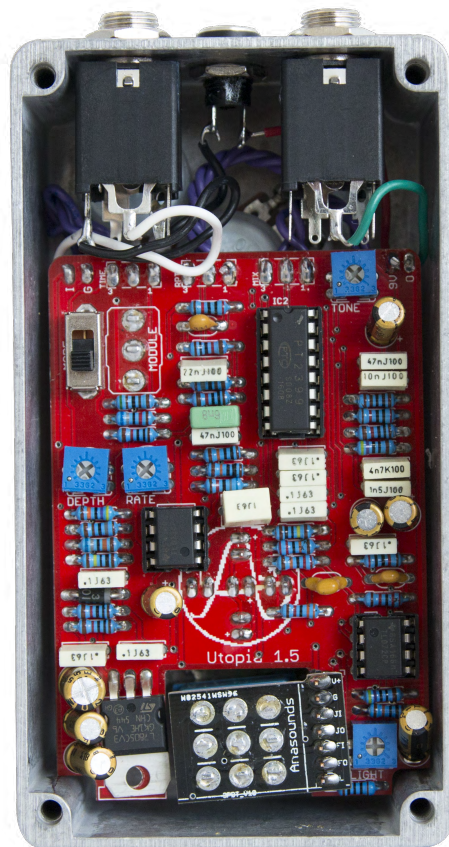
EMERALD MIRROR-PLEXIGLASS
LOGO LIGHTING
INTENSITY CONTROLLER



TONE/ELECTRONIC

2 SIGNALS ARE WORKING IN PARRALEL,
THE INPUT TONE OF THE UTOPIA IS BUFFERED,
ENHANCED AND MIXED WITH THE DELAY EFFECT.
THE PURPOSE HERE IS
TO KEEP ALL THE PRECISION OF YOUR ANALOG TONE
AND THEN ADD SOME ECHO. THEREFORE,
YOUR GUITAR'S QUALITY SIGNAL IS CONSERVED,
THIS WILL BRING HEAT TO THE TONE
AND AN ECHOVERB EFFECT.

CALIBRATED FOR ECHOES FROM 0 TO 400 MS
(UP TO 600 MS THANKS TO INTERNALS SETTINGS),



THE PEDAL CAN BE USED
WITH VERY FEW REPETITIONS
AND SHORT DELAY TIME
FOR A GORGEOUS SLAPBACK,
AS WELL AS
A LONG DELAY TIME
WITH MANY REPETITIONS
TO BRING YOURSELF
TO A FAR FAR GALAXY !



SPECIFICATIONS

POWER CONSUMPTION : 34 mA

INPUT IMPEDANCE : 185 k Ω

OUTPUT IMPEDANCE : 260 Ω

SUPPLY : 9V DC, 34 mA, NEGATIVE POLARITY

OPA DYNAMIC : 9 V

SWITCHING : GOLD TRUE BYPASS

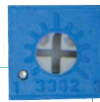
INTEGRATED CIRCUITS : OPA TEXAS INSTRUMENT

SIZE L*L*H : 118*64*59 MM

WEIGHT : 290 G ,



INTERNAL SETTINGS



TRIMMERS

TINY POTENTIOMETERS YOU CAN TURN LIKE SCREWS

THE MODULATION IS CONTROLLED BY 2 SETTINGS : DEPTH AND RATE. NOTICE THAT THE MODULATION ACTS ON REPETITIONS BY MODULATING THE TIME OF THE REPETITION, HERE, WE ARE NOT TALKING ABOUT A PHASER OR OTHER EFFECT WHICH MODULATE THE ENTIRE SIGNAL. WHAT IS INTERESTING WITH THIS TYPE OF MODULATION IS THAT WE CAN CHANGE THE PITCH, AND THEN BE UNTUNED ON OUR REPETITIONS.

DEPTH OF THE MODULATION

0 % (AS DELIVERED) : DEEP MODULATION

100 % : LIGHT AND ALMOST INAUDIBLE

DEPTH

RATE

WHICH SPEED WOULD YOU CHOOSE ?

0 % (AS DELIVERED) : VERY SLOW --> GET A BEAUTIFUL INTRO

100 % : EFFECT CLOSE TO A VIBE, WHY NOT ?

STONE

FROM A TAPE TONE TO A CLEAN TONE

0% (AS DELIVERED) : UNFILTERED REPETITIONS

--> TAPE ECHO

100 % : ALL THE REPETITIONS ARE FILTERED, NO MORE OSCILLATIONS

--> COLD TONE, MORE CLEAN

LIGHT

WE ALL LOVE WHEN IT LIGHTS

0% : LIGHT

100% : POWERFULL LIGHT

⚠ NEVER LET AT 100% TOO LONG

DELIVERED AT 75%.



DIP SWITCHES

MORE

THE UTOPIA HAS BEEN CREATED TO SOUND AT 400 MS

BUT YOU CAN PUSH IT FURTHER !

UP : 600MS MAX, AND GET A LOFI TONE, TAPE EFFECT IS ENHANCED !

DOWN : 400 MS

DELIVERED SETTLED DOWN

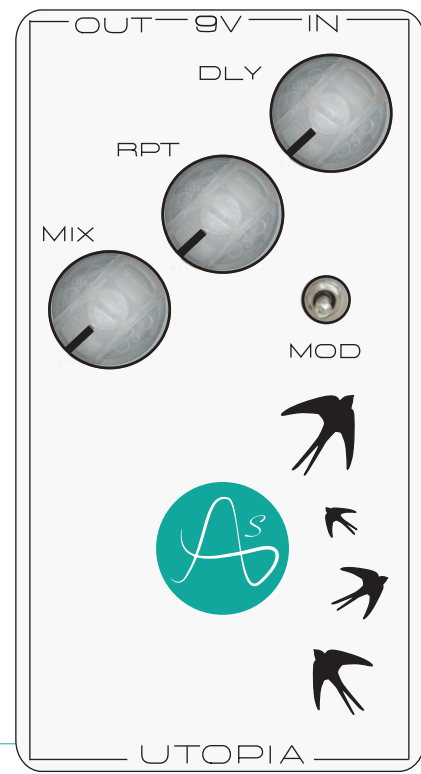
EXTERNAL SETTINGS

MIX : BLEND YOUR DRY AND WET SIGNALS

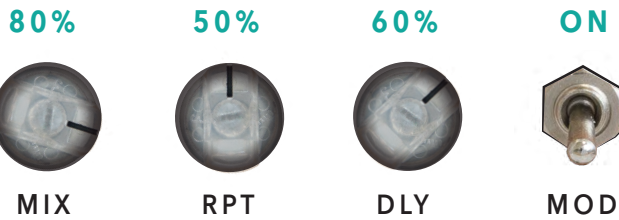
RPT : REPETITIONS QUANTITY

DLY : TIME BETWEEN EACH REPETITION

MOD : ACTIVATE THE MODULATION ON THE REPETITIONS

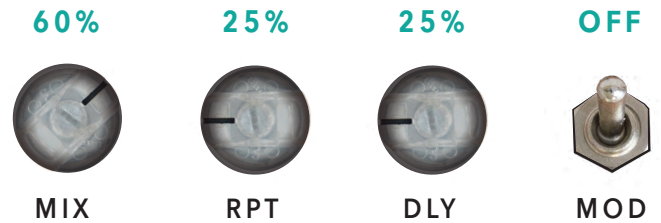


DOTTED EIGHT DELAY



YOU'RE NOT ALONE ANYMORE !

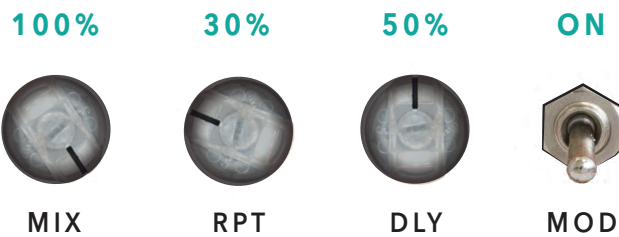
SLAPBACK ECHOVERB



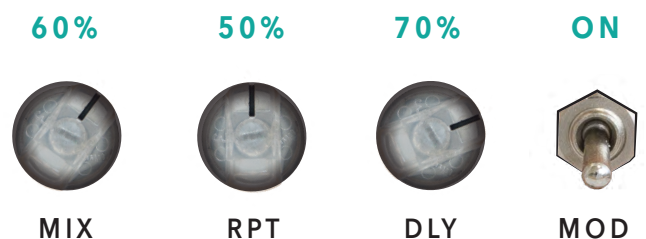
A BEAUTIFUL CALIFORNIAN SLAPBACK

IT'S TIME TO SHOW THEM

DEEP ECHO



LONG DELAY



ROCK ON WITH A GODNESS LEAD !