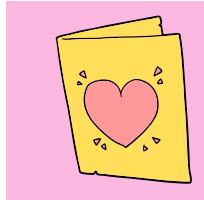
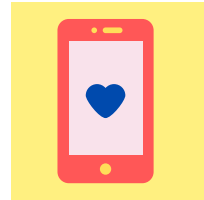


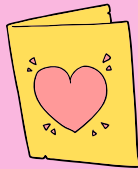
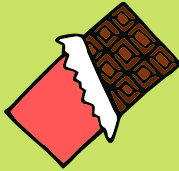
Best Mom



friends



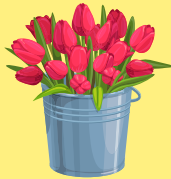
MOTHER'S DAY BINGO



MOTHER'S DAY BINGO



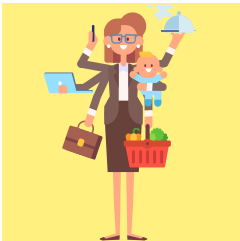
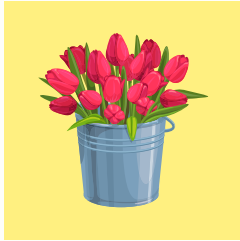
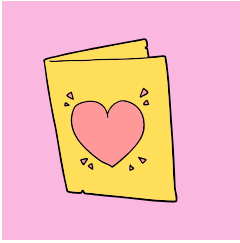
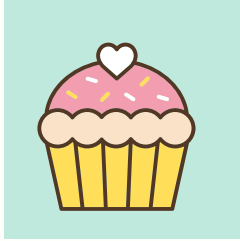
Best
mom



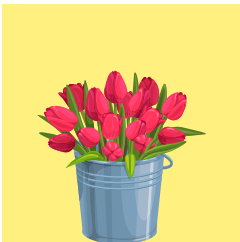
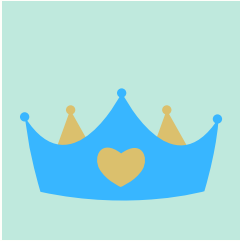
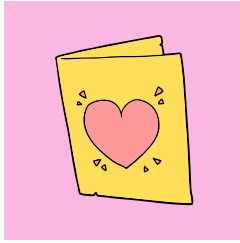
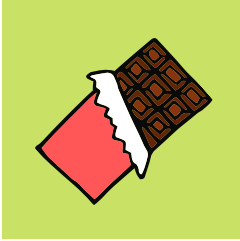
friends



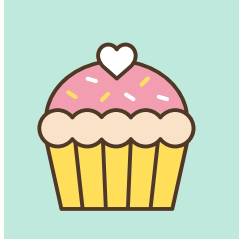
MOTHER'S DAY BINGO



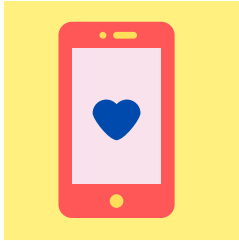
MOTHER'S DAY BINGO



MOTHER'S DAY BINGO



friends



Best Mom



NUMBER OF PLAYERS

1 MODERATOR

5 PLAYERS

WHAT YOU NEED

1 BOX + 5 PENS

**CUT OUT THE INDIVIDUAL
IMAGES ON PG 1 AND PUT
THEM IN A BOX**

**HAND OUT CARDS (2-6) TO THE
PLAYERS.**

**MODERATOR HAS TO PICK ONE
CARD AT A TIME AND PLAYERS
HAVE TO STRIKE IT OFF**

**THE PERSON WHO STRIKES OFF
ALL ITEMS ON HIS CARD FIRST
HAS TO SHOUT -
'I LOVE MOM' TO BE DECLARED
THE WINNER!**

MOTHER'S DAY BINGO HOW TO PLAY

