

PIRANHA P6 NITRO | SURFACE MOUNT

PIRANHA
 — SERIES —



PIRANHA P6 Nitro Underwater Light produces 3500 fixture lumens.

Compact low profile design is perfect for all boat types, suitable for transom and side mounting on all hull types.

Switch on for normal power, for Nitro power turn off then back on and the brightness is boosted by 35%.

Incredibly simple to install just one small cable entry hole and 3 mounting screws. Reverse polarity protection with in built driver technology and active thermal rollback.

New Hydro Block Technology.

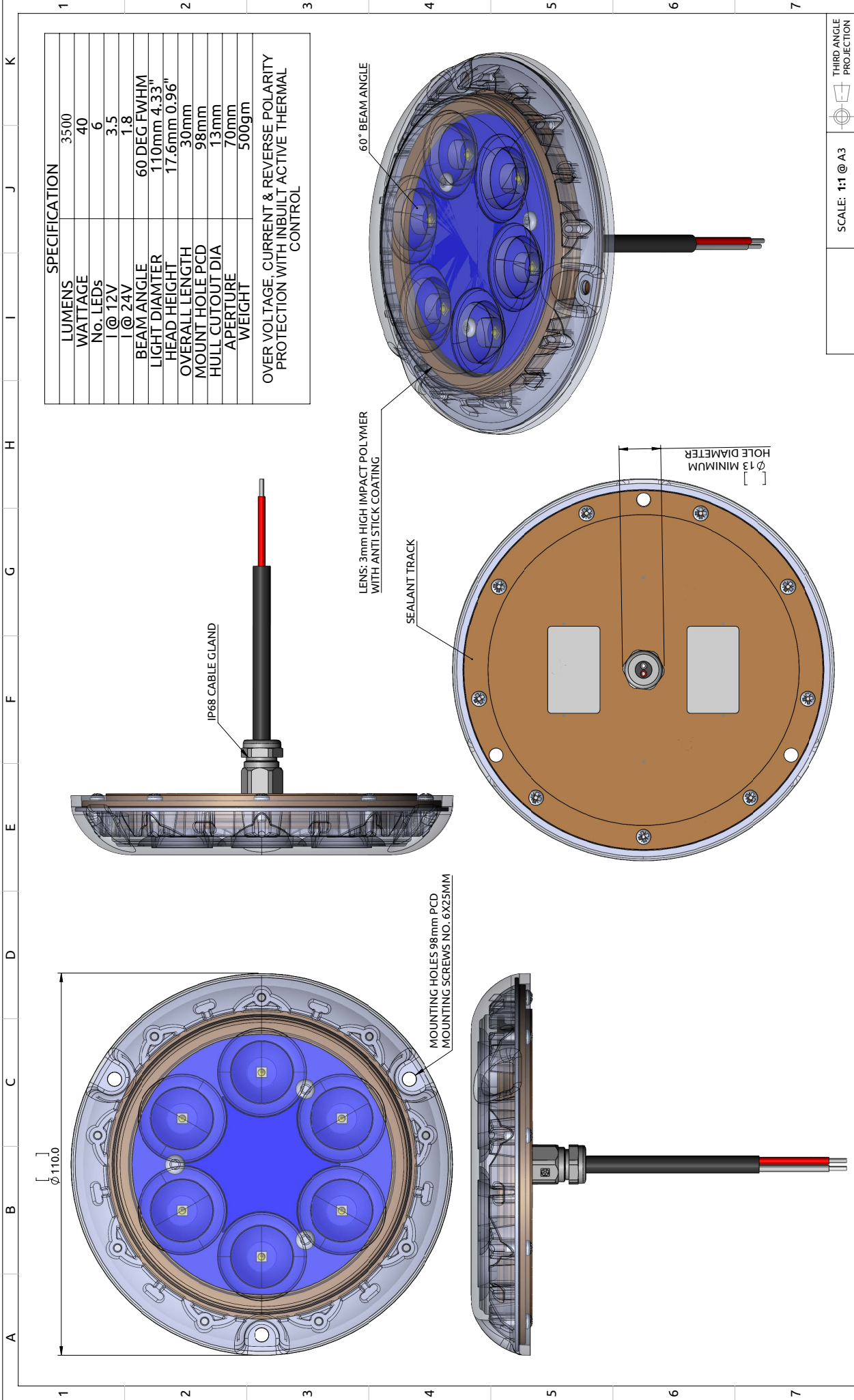
Suitable for in and out of water use.

- RINA Type approval
- 2-Year Warranty

SPECIFICATION	PIRANHA P6 NITRO MK11 SINGLE / DUAL COLOUR
Mounting Type	Surface
Hole cut out size	15mm
Maximum Lamp Lumens	4500
Fixture Lumens	3500
Max Wattage	40 watts
Typical Life Expectancy	50,000 Hours
Voltage	12v or 24v (Dual Colour 12v only)
Power Draw	3.5 amps @ 12v / 1.8 amps @ 24v
Protection	Over / Under Voltage, Over Current, Reverse Polarity protection, Active thermal protection. Hydro block technology.
Fixture Profile	17.6mm
Fixture Diameter	95mm
Lens Type	3mm Optical grade high impact polymer, Guard X Coating
Fixture Material	AB2 Bronze (standard) or Marine grade aluminium
Beam Angle	60 Degree
Warranty	2 Year
Type Approval	RINA IEC 60529
Available Colours	Diamond White 6500k Emerald Green Cobalt Blue Sapphire Blue Dual Colour White/Blue
Suitable Use	Above & below the water-line
Spacing	1.2 - 2mtr
Driver Type	Integral
Total weight	500 gm
Attached cable length	1.8 mtr Over-moulded
Included in box	In-line fuse holder & rated fuse, Gel connector, Inline Crimps, Heat shrink, Fixing Screws, Template and installation instructions
ACCESSORIES	(OPTIONAL)
Junction Box	4 Way IP68 Wiring Junction Box
BL-Switch	Panel mount illuminated switch & wiring loom
220/110v Power Supply	Power supply 24v for up to 5 lights
I.Y.S Lighting Control	Control via MFD screen or mobile device

All Piranha models now available in aluminium finish to suit aluminium/composite hulls





SPECIFICATION		LUMENS	3500
		WATTAGE	40
		No. LEDs	6
		I @ 12V	3.5
		I @ 24V	1.8
		BEAM ANGLE	60 DEG FWHM
		LIGHT DIAMETER	110mm 4.33"
		HEAD HEIGHT	17.6mm 0.96"
		OVERALL LENGTH	30mm
		MOUNT HOLE PCD	98mm
		HULL CUTOUT DIA	13mm
		APERTURE	70mm
		WEIGHT	500gm
OVER VOLTAGE, CURRENT & REVERSE POLARITY PROTECTION WITH INBUILT ACTIVE THERMAL CONTROL			
DESCRIPTION:		PIRANHA P6 NITRO	
MATERIAL:		MARINE AB2 BRONZE & POLYMER LENS	
FINISH:		SEE PART DRAWINGS	
DRAWING No:		GAA-0128 Iss B00A	
ISSUE:		B00 A	
REV:		STATUS:	
SCALE: 1:1 @ A3		THIRD ANGLE PROJECTION	

Bluefin LED
Underwater Lighting

THIS DRAWING IS THE PROPERTY OF BLUEFIN LED. IT IS TO BE USED ONLY FOR THE PROJECT AND PART AND MUST NOT BE REPRODUCED OR DISCLOSED WITHOUT THE WRITTEN AUTHORIZATION OF BLUEFIN LED. NO DEVIATION FROM THIS DRAWING IS PERMISSIBLE WITHOUT WRITTEN AUTHORIZATION FROM BLUEFIN LED.