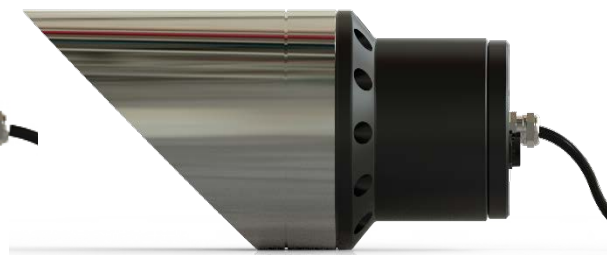
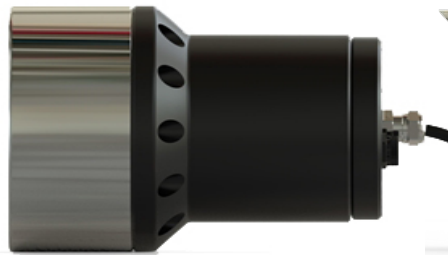


SY ELITE SY48R-FF / SY48R-VA | WELD IN

SUPERYACHT ELITE
— SERIES —



The Bluefin Elite Superyacht SY48R-VA and SY48R-FF series boasts the highest fixture lumen light output currently available on the market.

Flush fit weld in section for either Steel or Aluminium hulls.

Variable angle 0-45 degree weld in section for either Steel or Aluminium hulls.

The LED cartridge can be serviced or upgraded from inside the hull eliminating the need to haul the vessel.

Available in White, Blue or RGBW Colour Change which can be controlled via our dedicated touchpad controller/app or our I.Y.S Control system for MFD/Mobile devices. Alternatively the lights can be integrated into the yachts existing DMX control system.

- Type approval Lloyds, DNV or ABS by design appraisal documentation.
- 2-Year Warranty

SPECIFICATION	SY48R-FF	SY48R-VA
Mounting Type	Weld in	
Cofferdam Type	0 - 20 Degree	0 - 45 Degree
Hole cut out size	130mm	
Fixture Lumens	26,000	
Max Wattage	255 Watts	
Typical Life Expectancy	50,000 hours	
Voltage	110 / 220v	
Power Draw	2.3amp @ 110v / 1.1 amp @ 220v	
Protection	Over / Under Voltage and Current, Reverse polarity and Thermal regulation	
Fixture Length Std Cofferdam	157 mm	301 mm
Fixture Diameter	140mm	
Lens Type	Optical grade 8mm Borosilicate glass with Guard X coating	
Fixture Material	316L Stainless or Type Approved Aluminium	
Beam Angle	60 Degree FHWM	
Warranty	2 year	
Type Approval	Design Appraisal Document Lloyds, DNV , ABS or RINA	
Available Colours	Diamond White 6500k Cobalt Blue RGBW	
Features	Endless colours, cycling, strobe, dimmer or sound to light	
Suitable Use	Below the water-line only	
Spacing	1.2 - 2mtr	
Driver Type	External IP67 plug and play driver with built in WIFI / DMX	
Total weight	5.3 kg Stainless 3.5 kg Aluminium	8.9 kg Stainless 4.7 kg Aluminium
Attached cable length	1.8mtr Plug and play IP67	
Included in box	Plug and play power communication leads and interlink cables, WIFI / DMX, driver box and fittings instructions	
ACCESSORIES	(OPTIONAL)	
WIFI/DMX Controller	DMX controller with built in WIFI and phone/tablet app download	
I.Y.S Lighting Control	Control via MFD screen or mobile device	





THIRD ANGLE PROJECTION 1 of 1 Scale: 1:2 A3

Description:		SY48 DRIVER BOX	
Material:			
Finish:			
DWG No.	ISS.	Rev.	Status.
GAA-0119	Iss A00A	A	RELEASED

Bluefin LED
 Underwater Lighting

© 2014. SY48-DRIVER BOX LIGHTING DOCUMENT MUST NOT BE REPRODUCED IN WHOLE OR IN PART AND MUST NOT BE USED OR DISCLOSED WITHOUT THE WRITTEN AUTHORIZATION OF COASTLINE LED. NO DEVIATION FROM THIS DRAWING IS PERMISSABLE WITHOUT WRITTEN AUTHORIZATION FROM COASTLINE LED.



SPECIFICATIONS

LUMENS	GW48 WELD-IN
WATTAGE	16,000lm CC & UP TO 26,000lm SC
Current	2.3 Amp @ 110Vac 1.1 Amp @ 240Vac
No. LEDs	48
BEAM ANGLE	60 DEG FWHM
LIGHT DIA	130mm, 5.1"
LIGHT HEAD HEIGHT	N/A
LIGHT OVERALL LENGTH	306.5mm, 12.07"
MOUNTING HOLES	N/A
PCD	130mm, 5.1"
HULL CUTOUT DIA	70mm, 2.76"
LIGHT APERTURE	STAINLESS STEEL HULL: 8.9kg ALUMINIUM HULL: 4.7kg
WEIGHT	12mm BOROSILICATE WITH ANTI-STICK COATING
LENS	

M5 JACKING POINTS
3 LOCATIONS
USE CLAMP BOLTS IN
INSTANCES WHERE
REAR TUBE WILL NOT
MOVE FREELY.

WELD-IN RING
FULL PENETRATION WELD
WELD FLUSH TO HULL EXTERIOR

LENS: 12mm BOROSILICATE WITH
ANTI STICK COATING

ALUMINIUM TUBE

INTERCHANGEABLE
LIGHT ENGINE

THIRD ANGLE PROJECTION
Scale: 1:1.5 A3

Description.	SY WELD-IN 0-45 DEGREE - ALUMINIUM BODY		
Material.			
Finish.			
DWG No.	ISS.	Rev.	Status.
GAF-0115 Iss 01B	01	C	

Bluefin LED
Underwater Lighting

© 2014 Bluefin LED. THIS DOCUMENT MUST NOT BE REPRODUCED IN WHOLE OR IN PART AND MUST NOT BE USED OR DISCLOSED WITHOUT THE WRITTEN AUTHORIZATION OF COASTLINE LED. NO DEVIATION FROM THIS DRAWING IS PERMISSIBLE WITHOUT WRITTEN AUTHORIZATION FROM COASTLINE LED.



SPECIFICATIONS

LUMENS	16,000lm	GW48 WELD-IN
WATTAGE	25.5	CC & UP TO 26,000lm SC
Current	2.3 Amp @ 110Vac	
	1.1 Amp @ 240Vac	
No. LEDs	48	
BEAM ANGLE	60 DEG FWHM	
LIGHT DIA	130mm, 5.1"	
LIGHT HEAD HEIGHT	N/A	
LIGHT OVERALL LENGTH	196mm, 7.72"	
MOUNTING HOLES	N/A	
PCD	N/A	
HULL CUTOUT DIA	130mm, 5.1"	
LIGHT APERTURE	70mm, 2.72"	
WEIGHT	STAINLESS STEEL HULL: 5.3kg	
	ALUMINIUM HULL: 3.5kg	
LENS	12mm BOROSILICATE WITH ANTI-STICK COATING	

THIRD ANGLE PROJECTION
 Scale: 1:1.5 A3

Description.	SY WELD-IN ALUMINIUM		
Material.			
Finish.			
DWG No.	ISS.	Rev.	Status.
GAE-0115 Iss 02B	02	B	RELEASED

© 2014 Bluefin LED. THIS DOCUMENT MUST NOT BE REPRODUCED IN WHOLE OR IN PART AND MUST NOT BE USED OR DISCLOSED WITHOUT THE WRITTEN AUTHORIZATION OF COASTLINE LED. NO DEVIATION FROM THIS DRAWING IS PERMISSIBLE WITHOUT WRITTEN AUTHORIZATION FROM COASTLINE LED.