

DECK/PATHWAY LIGHT



All new Deck/Pathway Light, manufactured from 316L Polished stainless steel with patented compact design.

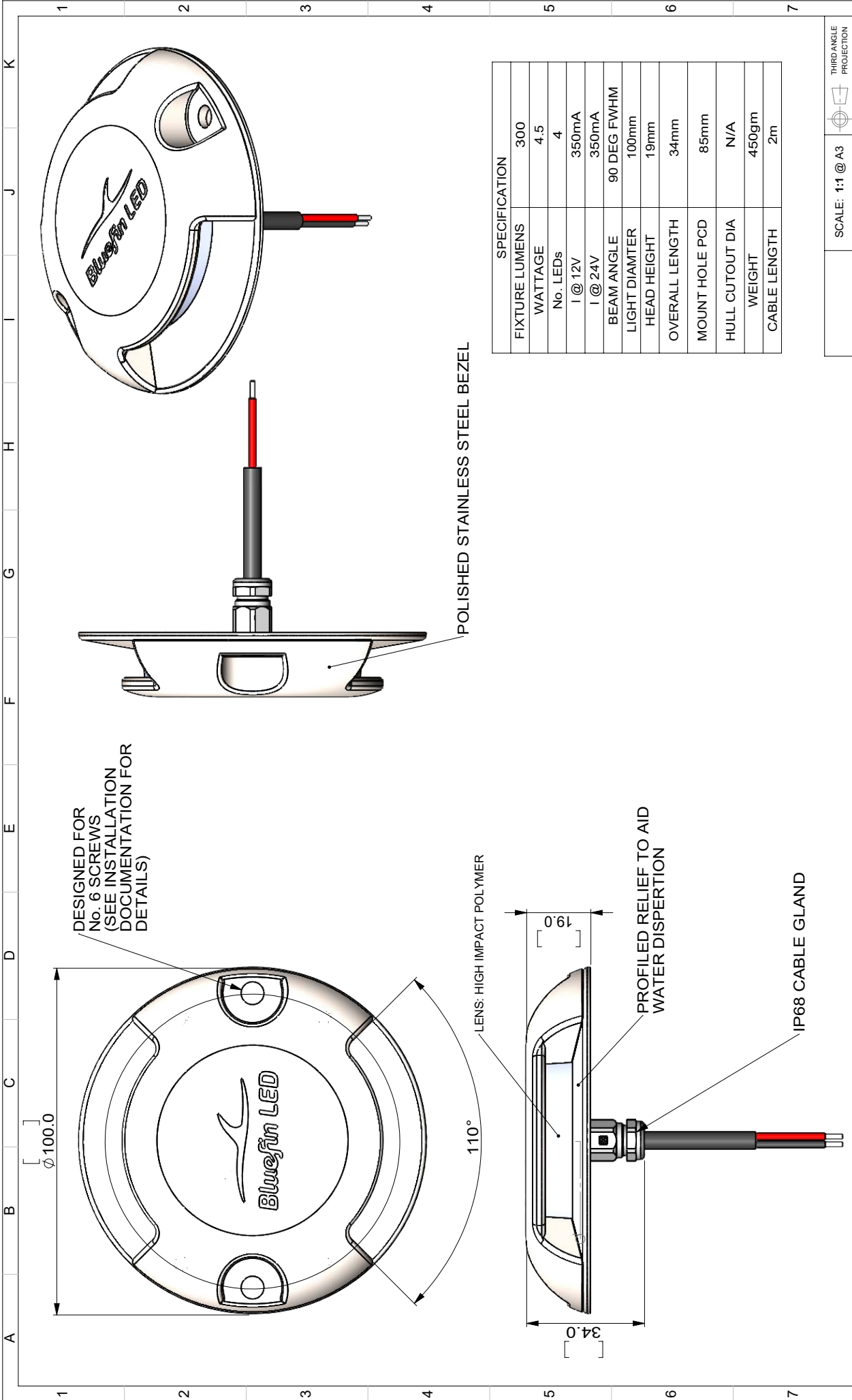
With high output LED's giving you the ultimate illumination solution for walkways in marinas, docks or anywhere you need unobtrusive lighting.

Colour combinations available to match every situation on land or sea.

- 2-Year Warranty

SPECIFICATION	DECK/PATHWAY LIGHT
Hole cut out size	13mm
Fixture Lumens	300Lm
Max Wattage	8.5 Watts
Typical Life Expectancy	40,000 Hours
Voltage	12v AC/DC
Power Draw	350ma
Protection	IP68
Fixture Profile	19 mm
Fixture Diameter	100 mm
Fixture Material	316L Stainless Steel
Beam Angle	Flat 110 Degree
Warranty	2 year
Available Colours	Warm White, Cold White, Blue, Cold White/Blue, Blue/Green, White/Green
Suitable Use	Above the waterline only, pathways, pontoons and docks walkways
Driver Type	Integrated
Attached cable length	2 Mtr over-moulded





SCALE: 1:1 @ A3

THIRD ANGLE PROJECTION

DESCRIPTION: PATHWAY DOUBLE SIDE EMITTING DECK LIGHT

MATERIAL: 316L STAINLESS STEEL & POLYMER LENS

FINISH: SEE PART DRAWINGS

DRAWING No: GAA-0155 Iss D00B

ISSUE/ REV: STATUS: D00 B

Bluefin LED
Underwater Lighting

© 2016 Bluefin LED Lighting. ALL RIGHTS RESERVED. THIS DRAWING IS THE PROPERTY OF BLUEFIN LIGHTING AND IS NOT TO BE REPRODUCED, COPIED, OR TRANSMITTED IN ANY FORM OR BY ANY MEANS, ELECTRONIC OR MECHANICAL, INCLUDING PHOTOCOPYING, RECORDING, OR BY ANY INFORMATION STORAGE AND RETRIEVAL SYSTEM, WITHOUT THE WRITTEN AUTHORIZATION OF BLUEFIN LED. NO DEVIATION FROM THIS DRAWING IS PERMISSIBLE WITHOUT WRITTEN AUTHORIZATION FROM BLUEFIN LED.