

ORCA OR20 | SURFACE MOUNT

Signature
 SERIES



ORCA OR20 is the most powerful surface mounted Underwater LED light available.

2 models to choose from, Single colour or RGBW Colour Change model with WIFI DMX functionality or control with our I.Y.S Control system* for MFD/Mobile devices.

A radical departure from conventional sealing methods the Orca has an unique rear cassette design with multiple sealing systems.

Machined from Billet AB2 Marine grade Bronze.

Suitable for Transom mounting on all hull types.

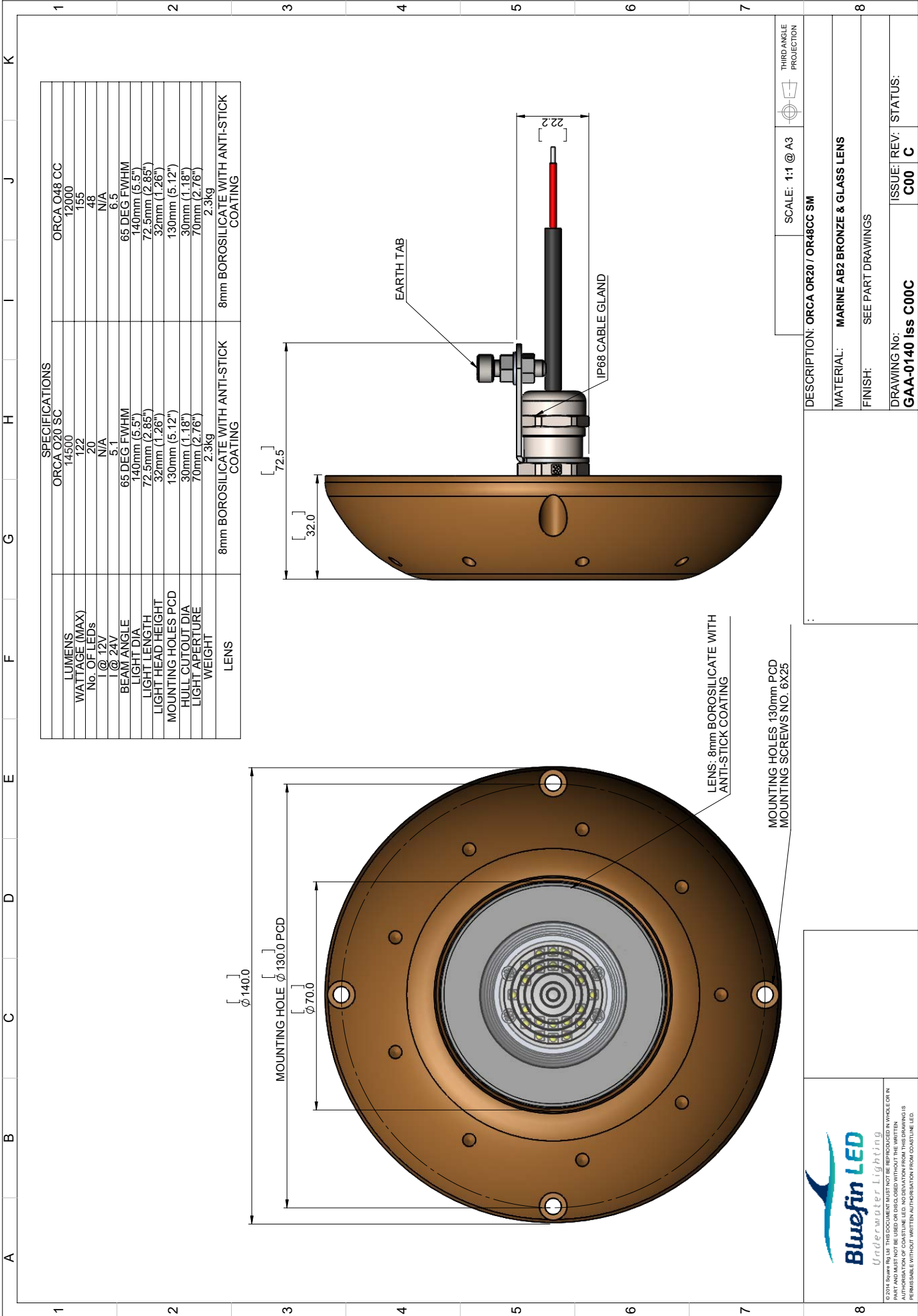
Built in driver technology with active thermal rollback.

12V version also available with 7000 fixture lumens (price on application).

- RINA Type approval
- 2-Year Warranty

SPECIFICATION	ORCA OR20 SINGLE COLOUR
Mounting Type	Surface
Hole cut out size	22mm
Maximum Lamp Lumens	16,000
Fixture Lumens	14,500
Max Wattage	122 Watts
Typical Life Expectancy	50,000 Hours
Voltage	24v
Power Draw	2.6 amps
Protection	Over / Under Voltage, Over Current, Reverse Polarity protection, Active thermal protection. MLST Sealing technology
Fixture Profile	32mm
Fixture Diameter	140mm
Lens Type	Optical grade 8mm Borosilicate glass with Guard X coating
Fixture Material	AB2 Bronze
Beam Angle	65 Degree FWHM
Warranty	2 year
Type Approval	RINA IEC 60529
Available Colours	Diamond White 6500k Emerald Green Cobalt Blue
Suitable Use	Below the water-line only
Spacing	1.2 - 2mtr
Driver Type	Integral
Total weight	2.3kg
Attached cable length	1.8mtr Over-moulded
Included in box	In-line fuse holder & rated fuse, Gel connector, Inline Crimps, Heat shrink, Fixing Screws, Template and installation instructions
ACCESSORIES	(OPTIONAL)
Junction Box	4 Way IP68 Wiring Junction Box
Delrin Sleeve	Isolating kit for steel, aluminium and carbon fibre hulls
220/110v Power Supply	Power supply 24v for up to 5 lights
BL-Switch	Panel mount illuminated switch & wiring loom
I.Y.S Lighting Control	Control via MFD screen or mobile device





THIS DRAWING IS THE PROPERTY OF BLUEFIN LED. IT IS TO BE USED ONLY FOR THE PURPOSES SPECIFIED IN THIS DRAWING AND IS NOT TO BE REPRODUCED, COPIED, OR TRANSMITTED IN ANY FORM OR BY ANY MEANS, ELECTRONIC OR MECHANICAL, INCLUDING PHOTOCOPYING, RECORDING, OR BY ANY INFORMATION STORAGE AND RETRIEVAL SYSTEM. WITHOUT THE WRITTEN AUTHORIZATION OF BLUEFIN LED, NO DEVIATION FROM THIS DRAWING IS PERMISSIBLE WITHOUT WRITTEN AUTHORIZATION FROM BLUEFIN LED.

DESCRIPTION: ORCA OR20 / OR48CC SM

MATERIAL: MARINE AB2 BRONZE & GLASS LENS

FINISH: SEE PART DRAWINGS

DRAWING NO.: GAA-0140 Iss C00C

ISSUE/REV. STATUS: C00 C