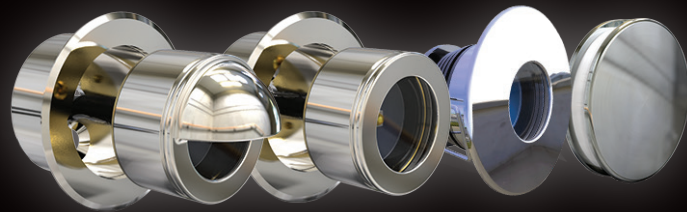


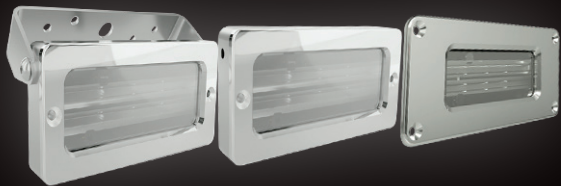
INTERIOR / EXTERIOR ~ LIGHTING ~



COURTESY LIGHTING



FLOOD-SPREADER-UTILITY LIGHTING



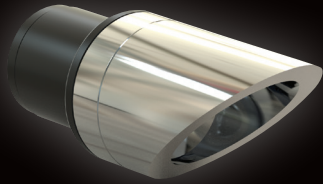
SUPERYACHT ELITE ~ SERIES ~

- The perfect solution for interior or exterior lighting on any vessel, powerful light output with ultra low power consumption.
- Use for safety or to enhance the natural beauty of your boat.
- Polished 316L.

TECHNICAL SPECIFICATION	COURTESY LIGHTING	FLOOD-SPREADER-UTILITY LIGHTING
Colours:		

QUALITY • RELIABILITY • PERFORMANCE

For more information call us on +44 (0) 1827 880450 or visit www.BluefinLED.com

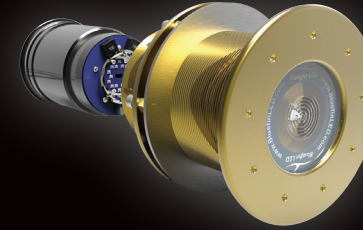


ELITE SERIES SY48R-VA

- The Bluefin Elite Superyacht SY48R-VA series boasts the highest fixture lumen light output currently available on the market.
- Variable angle 0-45 degree weld in section for either Steel or Aluminium hulls.
- The LED cartridge can be serviced or upgraded from inside the hull eliminating the need to haul the vessel.
- Available in White, Blue or RGBW Colour Change which can be controlled via our dedicated touchpad controller or app. Alternatively the lights can be integrated into the yachts existing DMX control system.
- Fully customisable.
- Model also available for Fuel/Water tanks.

TECHNICAL SPECIFICATION

Colours:	
Boat Size:	up to 30m/105ft+
Lumen Output:	28000
Current:	110V AC 2.3A / 240V AC 1.1A

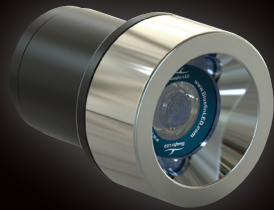


ELITE SERIES SY48-IFM

- Thru Hull interchangeable Flush-mount.
- Almost unlimited mounting options thanks to its ultra-low profile bezel.
- Thru Hull mounting offers secure fixing with the additional benefit of a removable LED cartridge that can be serviced inside the hull.
- Available in single colour or RGBW Colour Change model with full WIFI DMX compatibility.
- RGBW Colour Change model can be controlled via our dedicated touchpad controller or via a 3rd party device such as i phone, android or tablet, alternatively the lights can be integrated into the yachts existing control system.
- Delrin isolation sleeve must be used on Steel, Aluminium or Carbon composite hulls.
- RINA Type approval.

TECHNICAL SPECIFICATION

Colours:	
Boat Size:	up to 30m/105ft+
Lumen Output:	22000
Current:	110V AC 2.3A / 240V AC 1.1A (External Driver)

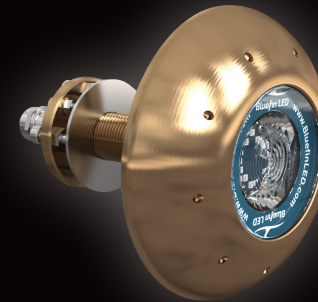


ELITE SERIES SY48R-FF

- The Bluefin Elite Superyacht SY48R FF series boasts the highest fixture lumen light output currently available on the market.
- Flush fit weld in section for either Steel or Aluminium hulls.
- The LED cartridge can be serviced or upgraded from inside the hull eliminating the need to haul the vessel.
- Available in White, Blue or RGBW Colour Change which can be controlled via our dedicated touchpad controller and app. Alternatively the lights can be integrated into the yachts existing DMX control system.
- Fully customisable.
- Model also available for Fuel/Water tanks.

TECHNICAL SPECIFICATION

Colours:	
Boat Size:	up to 30m/105ft+
Lumen Output:	26000
Current:	110V AC 2.3A / 240V AC 1.1A



ELITE SERIES SY48 THRU-HULL

- Formidable performance with the added security of a thru-hull stem fitting.
- Available in single colour or RGBW Colour Change model with full WIFI DMX compatibility.
- RGBW Colour Change model can be controlled via our dedicated touchpad controller or via a 3rd party device such as i phone, android or tablet, alternatively the lights can be integrated into the yachts existing control system.
- RINA Type approval.
- Delrin isolation sleeve must be used on Steel, Aluminium or Carbon composite hulls.

TECHNICAL SPECIFICATION

Colours:	
Boat Size:	up to 30m/105ft+
Lumen Output:	22000
Current:	110V AC 2.3A / 240V AC 1.1A

