

ONE-STEP HAIR DRYER

Professional Hair Dryer Brush
MODEL: AJ-PCA044

SAFETY INSTRUCTIONS



DO NOT use the appliance near filled bathtub, wash basin or during shower. When used in a bathroom, make sure to keep it away from liquid and unplug from power immediately after use to avoid electric shock or fire hazard.

Electricity Safety

Always unplug the appliance immediately after using.
DO NOT operate this appliance with a voltage converter.
DO NOT place or store appliance where it can fall or be pulled into a tub or sink.
DO NOT use near, place in, or drop into water or other liquid.
DO NOT use the appliance near filled bathtub, wash basin or during shower. If the appliance falls into water, unplug it immediately.
This appliance should never be left unattended when plugged in. Turn off the switch and unplug the electrical cord when not in use.
DO NOT use the appliance with a twisted, bent or otherwise damaged cord. DO NOT pull, twist or wrap the cord around the appliance. DO NOT use an extension cord with this appliance. Never operate this appliance if it has a damaged cord or plug, if it is not working properly, or if it has been damaged or dropped into water. Return the appliance to the manufacturer for examination and replacement, if applicable.
IMPORTANT - This appliance has a polarized plug (one blade is wider than the other). To reduce the risk of electric shock, this plug is intended to fit in a polarized outlet only one way. If the plug does not fit fully in the outlet, reverse the plug. If it still does not fit, contact a qualified electrician. Do not attempt to rig this safety feature.

Related to Use

Close supervision is necessary when this appliance is used by, or near children or individuals with certain disabilities.
Use this appliance only for its intended use as described in this manual. DO NOT use attachments not recommended by the manufacturer.
Keep the cord and appliance away from heated surfaces. Attachments (when furnished) may be hot during use. Allow to cool down before handling.
Never use while sleeping.
Never block or insert any object into the air openings of the appliance or place it on a soft surface, such as a bed or couch, where the air openings may be blocked. Keep the air openings free of lint, hair, and the like.
DO NOT direct hot air toward eyes or other heat-sensitive areas. DO NOT place appliance on any surface while it is operating, keep your hair away from the air inlets.
DO NOT use outdoors or operate where aerosol (spray) products are being used or where oxygen is being administered.
Household use only.
This appliance is provided with a protective device that may make the appliance inoperable under some abnormal conditions (such as immersion of the appliance). If the appliance becomes inoperable, return the appliance to a service center for examination and repair. For appliances provided with user- resettable protective devices, the instructions shall:
a) Describe the purpose of the test and reset buttons,
b) Specify the frequency of the testing,
c) Describe the indication of proper functioning of the protective device, and
d) Indicate that an appliance that does not operate in the proper functioning condition is to be discarded or returned to a service center for examination and repair.



- HIGH level**
Hot air, fit for thick or coarse hair
- LOW level**
Hot air, fit for fine or thin hair
- COOL level**
Cold air, lock in the style
- OFF**
Turn off the dryer

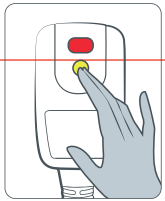
Input	125V AC - 60Hz
Rated Power	1300W
Operating Current	10-11A
Rotate Speed	110000 rpm

SAVE THESE INSTRUCTIONS

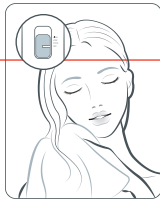
USING THE HAIR DRYER



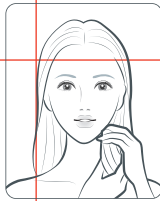
- Always test the safety plug before use. Periodically check the plug to verify its status.
- If the TEST button works improperly, stop using and return the appliance to the manufacturer.



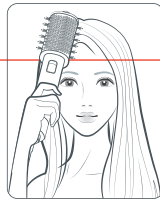
1. Plug into a socket and press the TEST button. The RESET button should pop up and the dryer stops. Press the RESET button again to resume.



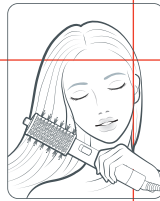
2. Towel dry your hair to remove excess water to 50% dry, then comb through the damp hair to detangle for better results.



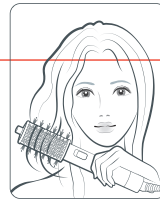
3. Select a level of COOL -LOW-HIGH according to your desire to turn on the hair dryer. Separate your hair into manageable sections.



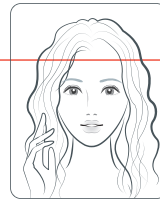
4. For smooth blowouts, place the dryer close to the roots and brush down toward the ends.



5. For voluminous blowouts, place the dryer UNDER the roots and roll outward to the ends. For extra lift, hold for 2-3s under the roots.



6. To curl ends IN/OUT, place the dryer UNDER/ OVER the ends and hold the dryer for 2-3s before rotating INWARD/ OUTWARD.



7. Repeat until hair has been dried into luxurious, voluminous styles. Select the OFF position to turn off the hair dryer.

CLEANING AND MAINTENANCE



Always unplug the appliance from power source and allow it to cool down before cleaning and maintenance.



Cleaning

- Wipe the exterior with a damp cloth.
- Unlock the air inlet cover at the bottom of the appliance, remove dust and lint with a small brush or vacuum cleaner brush attachment.
- DO NOT rinse in water or allow moisture or additional debris to enter the unit while cleaning.



Maintenance

- This appliance is equipped with a thermostat that may cycle OFF if it is over-temperature due to the partially blocked air inlet or air outlet openings.
- If the appliance slows down during use, turn it off and allow it to cool down, at which time the thermostat will automatically reset.
- When using this appliance near water (e.g., bathrooms), the use of an electrical outlet protected by a Ground Fault Circuit Interrupter is recommended.



Storage

- Allow appliance to cool down completely and store out of reach of children in a safe, dry location.
- Handle cord carefully for longer life and avoid wrapping, jerking, twisting or straining, especially at plug connections.

TROUBLESHOOTING

Q: How to use for optimal effect?

A: It is recommended to use the hair dryer when your hair is 50% dry after washing.

Q: Hair is easily stuck.

A: The unique design of tufted bristles with boar technology can make the hair fluffy with better styling effect. It is recommended to comb your hair before using to reduce hair stuck.

Q: How to clean the hair dryer?

A: Please clean the hair on the dryer after each use, and clean the dust at the bottom of the dryer after using for a period of time.

WARRANTY & SERVICE

Thanks for choosing Anjou Salon One-Step Hair Dryer. This product is covered with Anjou product and labor warranty for 12 months from the date of its original purchase.

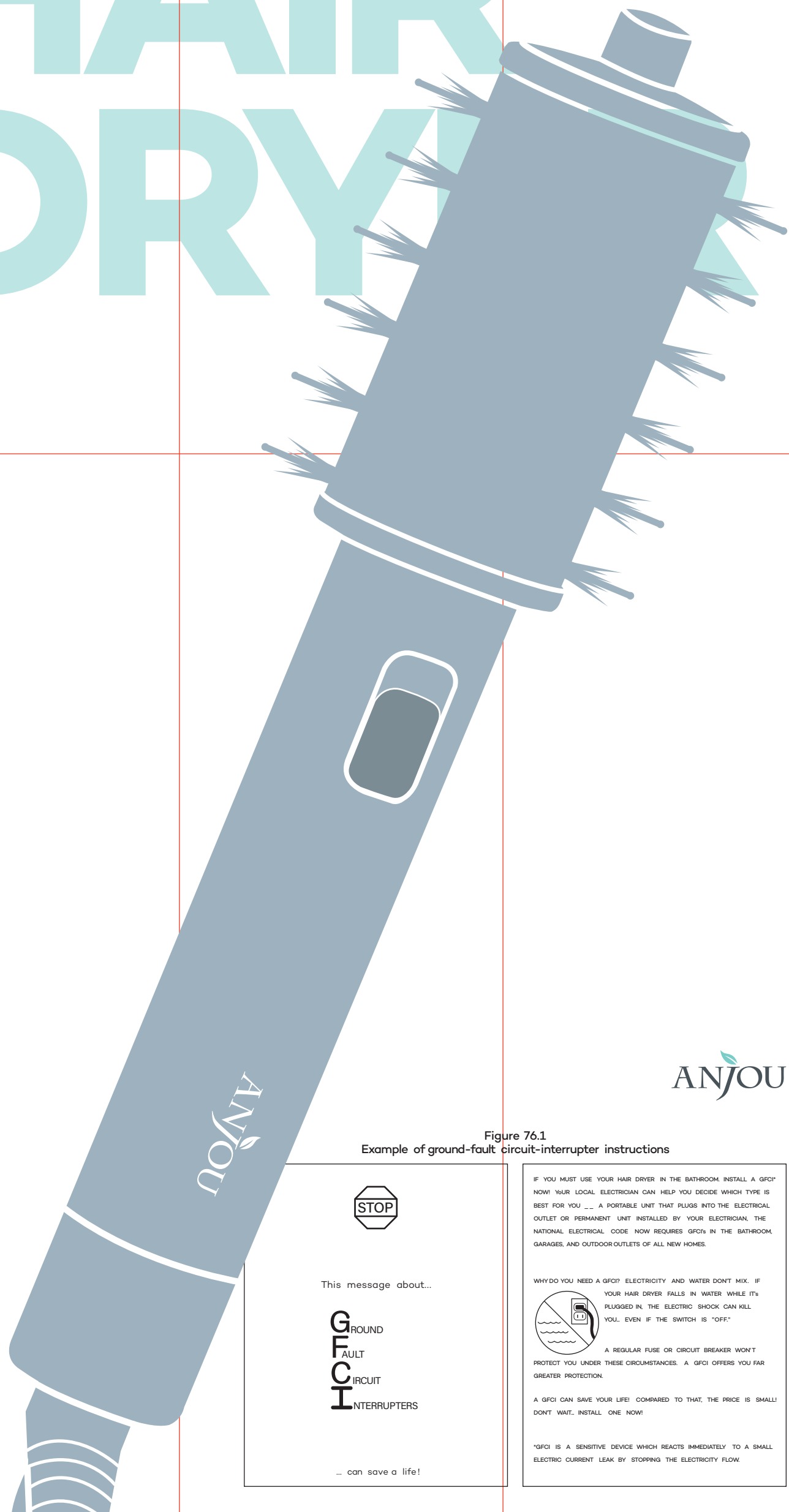
- The warranty will not apply in cases of:
 - Accident, misuse, or repairs performed by unauthorized personnel.
 - Any unit that has been tampered with or used for commercial purpose.
 - Use of force, damage caused by external influences.
 - Damage caused by non-observance of the User Manual, e.g. connection to an unsuitable mains supply or non-compliance with the instructions.
 - Partially or completely dismantled appliances.
 - Defects caused by or resulting from damages from shipping or from repairs, service, or alteration to the product or any of its parts that have been performed by a repair person not authorized by Anjou.

We can only provide after-sales service for products that are sold by Anjou or Anjou authorized retailers and distributors. If you have purchased your unit from a different place, please contact your seller for return and warranty issues.

*** Please have your invoice and order ID ready before contacting Customer Support.**




ONE-STEP HAIR DRYER



ANJOU

Figure 76.1
Example of ground-fault circuit-interrupter instructions



This message about...

**GROUND
FAULT
CIRCUIT
INTERRUPTERS**

... can save a life!

IF YOU MUST USE YOUR HAIR DRYER IN THE BATHROOM, INSTALL A GFCI* NOW! YOUR LOCAL ELECTRICIAN CAN HELP YOU DECIDE WHICH TYPE IS BEST FOR YOU. A PORTABLE UNIT THAT PLUGS INTO THE ELECTRICAL OUTLET OR PERMANENT UNIT INSTALLED BY YOUR ELECTRICIAN, THE NATIONAL ELECTRICAL CODE NOW REQUIRES GFCIs IN THE BATHROOM, GARAGES, AND OUTDOOR OUTLETS OF ALL NEW HOMES.

WHY DO YOU NEED A GFCI? ELECTRICITY AND WATER DON'T MIX. IF YOUR HAIR DRYER FALLS IN WATER WHILE IT'S PLUGGED IN, THE ELECTRIC SHOCK CAN KILL YOU, EVEN IF THE SWITCH IS "OFF."

A REGULAR FUSE OR CIRCUIT BREAKER WON'T PROTECT YOU UNDER THESE CIRCUMSTANCES. A GFCI OFFERS YOU FAR GREATER PROTECTION.

A GFCI CAN SAVE YOUR LIFE! COMPARED TO THAT, THE PRICE IS SMALL! DON'T WAIT... INSTALL ONE NOW!

*GFCI IS A SENSITIVE DEVICE WHICH REACTS IMMEDIATELY TO A SMALL ELECTRIC CURRENT LEAK BY STOPPING THE ELECTRICITY FLOW.

成品尺寸:70*233MM

折页

材质:80克日本白牛皮

红色线为折痕线,印刷时删除