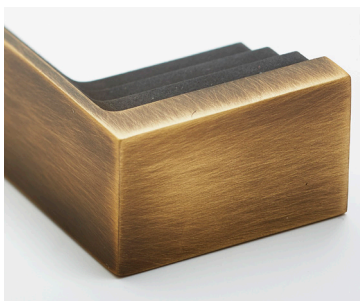


# NEST STUDIO

• COLLECTION •

## FINISH GUIDE



### Antique Brass

Warm tone with darker hand rubbed striations  
Matte protective lacquer



### Antique Copper

Dark black/brown finish  
Hand rubbed to reveal copper highlights  
Matte protective lacquer



### Antique Nickel

Rich charcoal color hand relieved to reveal subtle lighter tones  
Semi-gloss protective lacquer



### Blackened Bronze

Gray brown toned with highlights of warm bronze  
Hand waxing allows to for additional patina



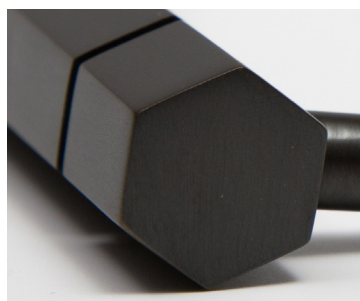
### Gloss White

Bright white lacquer with glossy finish



### Matte Black

Rich black lacquer with solid matte finish



### Oil Rubbed Bronze

Rich dark gray-brown hue with flat protective lacquer



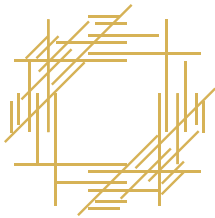
### Polished Brass No Lacquer

High shine brass with no finish. Will patina and age over time



### Polished Chrome

Cool blue-toned silver gray that is plated with no additional protective finish needed



# NEST STUDIO

• COLLECTION •

## FINISH GUIDE



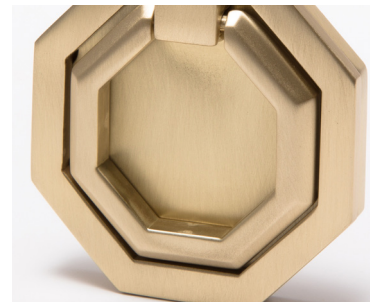
### Polished Copper

Pinkish/orange plated finish that will patina and age with time.



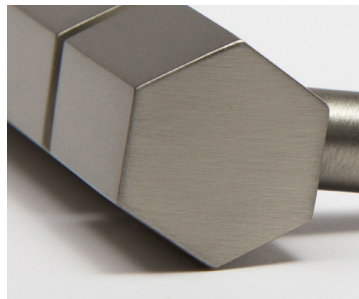
### Polished Nickel

Warm bright silver gray plated finish with no additional protective finish needed



### Satin Brass\*\*\*

Warm gold hued finish that is brushed to a matte finish  
Matte protective lacquer



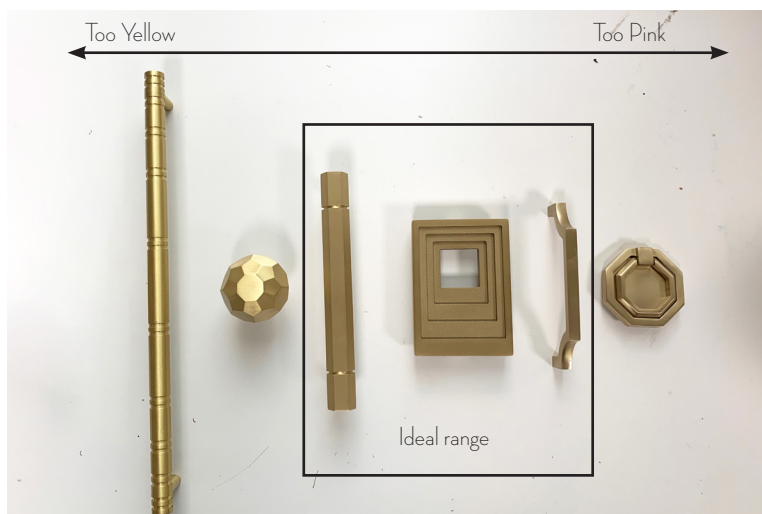
### Satin Nickel

Plated nickel with soft linear striations



### Verdigris

Aged green patina that is hand rubbed to reveal brass highlights



### \*\*\*Special Note

Our satin brass is one of our most popular finishes. The tone and coloration can vary depending on method of production, brass quality and lacquering technique. We require all our satin brass finishes to fall within an acceptable range of warmth. We will not accept brass that is bright yellow or too shiny. Based on our experience, if a baked lacquer is applied at a high temperature the brass will turn too bright for our acceptable range.