

BLUECO

SKU: BCO-EPS



USER MANUAL

SAVE THESE INSTRUCTIONS FOR FUTURE REFERENCE

WWW.BLUECOBRAND.COM

BCO-EPS



Preface:

Please read this manual carefully before using the machine to avoid operation errors. Proper operation and regular inspection are the most important factors for the economy of operation and the service life of the machine.

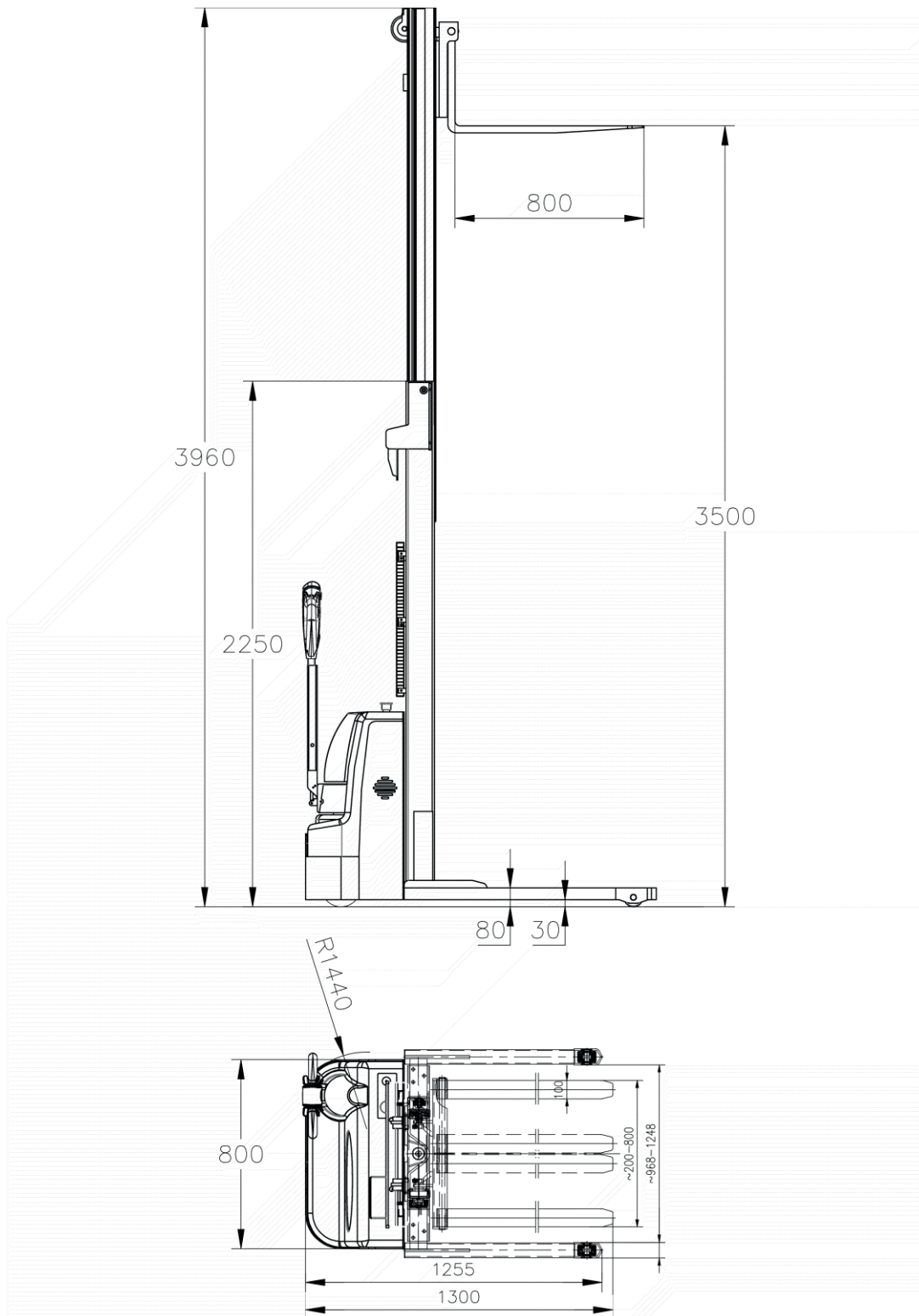
These important elements are described in the following relevant sections below. All the information in this booklet is based on the valid data of the product at the time of printing, and the manufacturer reserves the right to modify the product at any time, without the obligation to inform it. Therefore, any changes in the product should be checked.

1. Use

BCO-EPS all-electric reactor vehicle powered by battery, hydraulic lifting multi-functional stack machine and lift goods, short distance transportation, widely used in workshop, warehouse, wharf, station, freight yard and other places, is an ideal tool to improve efficiency, reduce labor intensity.

2. Technical parameter

The basic parameters of BCO-EPS are shown in Figure 1 and Table 1



graph 1

Table 1

Project			Model
			BCO-EPS
rated load weight	Q	t	3,309 lbs.
Load center distance	C		600
maximum height of lift	h2		118 inch
The lowest altitude from the ground			3 inch
Minimum height of cargo fork			90
The cargo fork length	L		44.29 inch
Outer spacing of cargo fork	W3		560/680
Goods fork center	W2		400/520
Driving speed (heavy / empty)			km /h
Stock fork lifting speed		mm /s	70-105mm
The speed of cargo fork decline		mm /s	95-105mm
Battery / battery charger			12V /80Ah×2/24V10A
Two rounds of distance	Y		1250
Rear wheel distance			500
minimum turning radius	Wa		1700/1560
Walking motor			24V/750W
Lift the motor			24V/2200W
outline dimension	overall length	L 2	1748
	overall width	W	800
	Door rest height	H	2009/1530/1780/2030/2180/2250
	The car body is always high	h1	850
wheel	Front wheel outer diameter		80
	Outer diameter of load bearing wheel		210

3. Guide to operation

3.1 Check before use

- ① If the pallet truck is damaged during transportation, Do not use. Contact the dealer immediately.
- ② The pallet truck has been filled with lubricating oil before delivery, and has been filled with hydraulic oil in the hydraulic system.
- ③ If the stacked car is equipped with two batteries, the battery has been charged.
- ④ before operation, carefully check the stacker to ensure that there is no fault.

3.2 Operation of Electric Pallet Stacker

- ① The stacker car can only be exercised on hard road surface <math><2.5\%</math> of a slope, do not work on the oily ground.
- ② Open the switch key, check whether the capacity is sufficient, and determine enough can be used.
- ③ If the power is insufficient, charge before use. Do not use it when losing power to avoid battery damage. If the battery is not used for a long time (more than a month), It should also be charged and discharged regularly to protect it.
- ④ In use, when the initial lift button is pressed, the fork is the initial lift, release the button fork stop the rising; when the initial drop button is pressed, the fork will drop, release the button fork can stop the fall.
- ⑤ When vehicles should keep a certain distance from the surrounding personnel when loading and unloading the goods, and should be particularly careful when the goods are too high or too heavy.
- ⑥ Please load strictly according to the load curve, do not overload, so as not to cause mechanical damage or cause casualties.
- ⑦ Driving the fork should be in the lowest position, do not lift the goods at the same time, flat turning and up and downhill should slow down. It is forbidden to raise the head and turn on the slope to avoid danger.
- ⑧ After use, the fork should be placed in the lowest position, the stacker should not be placed on the slope, and finally turn off the power supply and take out the key to extend the service life of the battery.

4.2 heap high vehicle handle, operation (push button function description)



Reverse side of the handle



Front of the handle

5. Use and maintenance of the storage battery and the charger

5.1 Use of the charger

- ① The charger we use for the high pile car has excellent constant current characteristics and extremely fast overcurrent protection ability, and can automatically stabilize the output current when the voltage fluctuates.
- ② The floating charging device effectively prevents the phenomenon of overcharging. No matter whether the battery changes significantly in temperature during the charging process, the electrolyte is not cloudy, which extends the service life.

5.2 Battery charging

- ① Connect the plug of the charger to the power plug standard 110v circuit charge the battery.
- ② Good ventilation should be maintained during the charging process. Smoking or using open flame is strictly prohibited.
- ③ After charging, simply unplug the charger from power circuit.
- ④ After charging, the battery should be maintained, check the acid position in the battery, and pay attention to whether the battery acid consumption exceeds the normal value.
- ⑤ The specific gravity meter is used to determine the electrolyte, and the ratio of acid and distilled water should be adjusted in time with the change of temperature.

6 Maintenance guidelines

6.1 Management inspection

- ① The stacker should be maintained and checked regularly to prevent fatigue wear and damage of the parts, and the possible hidden dangers will be found in time before the occurrence of serious damage.
- ② Battery is the energy source of the pallet stacker, it can provide sufficient electricity according to the corresponding instructions, lasting battery endurance can keep the machine in best condition

6.1.1 Daily inspection

- ① Check that the battery is fully charged (but also see the side face of the battery).
- ② Raise the fork to the top position to check the hydraulic oil in the hydraulic system, fill YA-N32 hydraulic oil or similar oil if necessary.

6.1 .2 Week check

Users of stack machines should spend several minutes a week to clean the machine, with special attention to removing the wheels and axle like silk, hemp, rags and other entanglement.

6.1 .3 Half a year inspection

- ① Apply the lifting chain and check the wear.
- ② Check and tighten the screws, nuts that may be loosened, and the cable connection for the battery.
- ③ Check the brush wear in the hydraulic pump motor and replace the brush that may be substandard to maintain good contact.

6.2 Replacement of the oil in the hydraulic system

We recommend replacing the hydraulic oil after one year of machine operation, (or the operation time reaches 200 hours). Even if the operation time is not reached, the hydraulic oil should be replaced once a year. The YA-N32 hydraulic oil or a similar oil shall be used. The oil used shall be filtered and clean and kept in sufficient amount. When the fork is raised two to three times, there is no excess air in the system, and the machine is able to work properly again. If the lifting height of the fork does not reach the required height, add hydraulic oil.

7. Handling and storage

The electric pallet stacker must be placed in a horizontal position during transportation and storage to prevent oil overflow.

In the storage, it should be kept clean to avoid the humid and harsh climate environment. The surrounding environment temperature should not exceed 40°C. If the battery is not used for a long time, it should be timely recharged.

8. General failure and handling

Hitch	Failure cause	Processing method
Open Switch, power supply indication the light isn't working.	Loose and switch Poor touch, resulting in electricFlow interruption.	Check the battery terminals and tighten tightl The screws at all the connections, the switche Keep the contact unobstructed.
Lift the piston rod of cylinder The velocity of the extent not uniform	There is air in the lifting cylinder	Start the machine two to three times and drain air in the oil cylinder.
Lift the cylinder cannot lift	Insufficient hydraulic oil	Add hydraulic oil
	The battery charge is less than that mark can be worst	Charge the battery
	Oil leakage	Check and repair, replace the seals, And tighten the screws at the tubing joint.
	overload	The lifting load shall not exceed the specified
During the rise and fall of the electricity The source system h abnormal sound	The hydraulic oil insufficient or not clean	Add enough hydraulic oil. Not clean with clean hydraulic oil The hydraulic oil.
	Due to the loose electric motor it effects the housing Displacement causes the main losing cause	Tighten the secured screws
	The surroundings are very humid	The ambient humidity is 90%

BLUECO

