



[www.Bluecobrand.com](http://www.Bluecobrand.com)

## User Manual

**SKU: BC012**

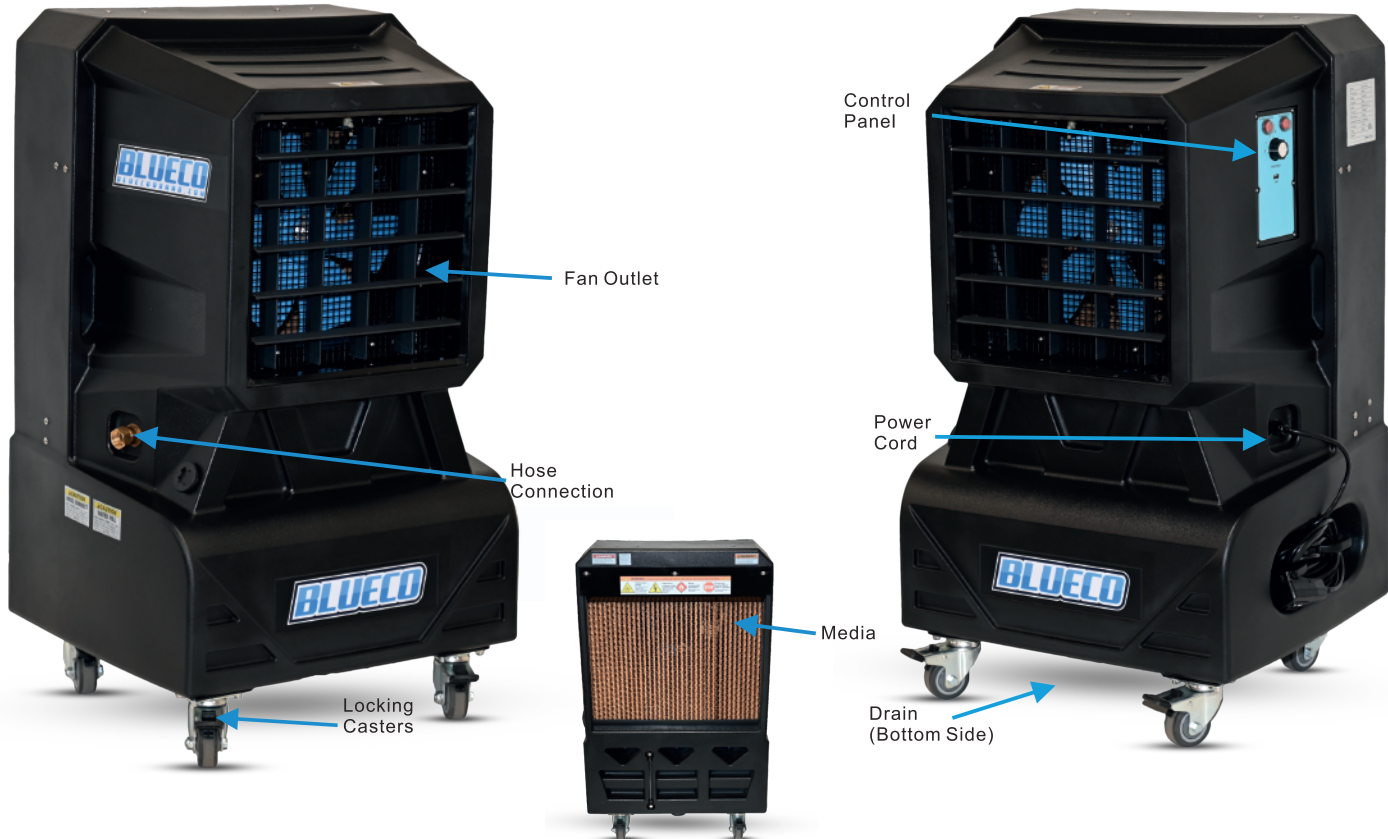


### INSTRUCTION MANUAL

SAVE THESE INSTRUCTIONS FOR FUTURE REFERENCE



**SKU: BC012**



Fan Outlet

Hose Connection

Locking Casters

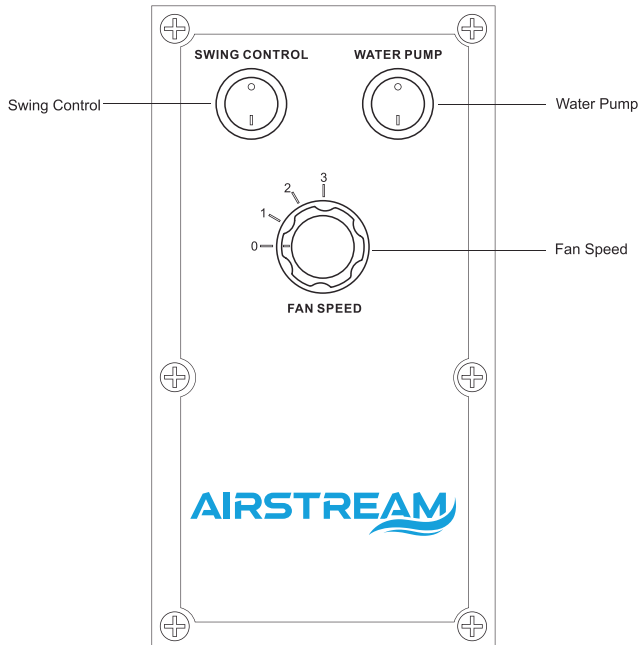
Control Panel

Power Cord

Media

Drain (Bottom Side)

## 12" Cooler Fans Status Display



The Control Panel's Status Display provides the on-off status of the functions.

### Control Functions

Fan Cooling Speed - 1 SPEED,2 SPEED,3 SPEED,2 SPEED,1 SPEED,OFF

Swing Control-Push on-Off

Water Pump - Push on - Off

### ⚠ CAUTION

Never push the buttons on the Control Panel or the Remote Control with anything sharp (e.g. screwdrivers, pens or a knife). Sharp objects can puncture the membrane creating a malfunction requiring repairs not covered under warranty.

# READ AND UNDERSTAND ALL WARNINGS AND INSTRUCTIONS BEFORE USING THIS COOLER!

## **OPERATION WARNINGS**

1. Not for use by children
2. Not for use by persons with reduced physical sensory or mental capabilities
3. Not for use by persons who have not reviewed the owner's manual and familiarized themselves with the operation of the product

## **SAFE OPERATION**

- Do not operate any evaporative cooler with a damaged cord or plug
- Do not run power cord under carpeting or cover with throwrugs, runners or similar coverings. Arrange power cord away from traffic areas to avoid tripping hazards.
- Read the evaporative cooler's instructions, owner's manual and labels thoroughly before use.
- Always unplug the power cord to the evaporative cooler before performing inspections or repairs.
- Always unplug the evaporative cooler during filling and cleaning.
- Do not step on or roll over power cord with heavy or sharp objects.
- Do not operate evaporative cooler unless all cool?
- Evaporative media is securely in place.
- Test the GFCI receptacle or breaker monthly to ensure it is functioning properly.
- Remove the plug from the electrical receptacle by pulling on the plug, not the power cord.
- Operation near open flames or sparks is not recommended.
- If operating near open flame or sparks, ensure the pump is continuously running in order to saturate and wet cool evaporative media.
- When cleaning your evaporative cooler, ensure water does not get into the motor or electrical system to prevent damage.
- The use of extension cords with your evaporative cooler is not recommended. However, if the owner determines that his or her circumstance or intended use requires the use of an extension cord, the following requirements must be met:
  - Use properly grounded 18 AWG or greater for BC012.
  - Extension cord must not exceed 50 feet (15.24 meters) in length
  - Extension cord must be properly grounded
- Evaporative coolers should not be modified in any way (other than repairs made by BLUECO replacement parts).
- If the evaporative cooler is damaged or malfunctions, do not continue to operate it. Refer to the warranty or FAQ sections of this owner's manual, please feel free to contact us.

The BLUECO series utilizes a GFCI to help protect users against ground electrical faults, which prevent some fire and electrical shock hazards. These devices are intended to trip at very low leakage currents.

BLUECO model BC012 uses a GFCI, which is built into the power cord and requires 5-20R(120V) electrical outlet.

The GFCI on model BC012 will not automatically reset when the evaporative cooler is plugged into an electrical outlet; the "reset" button located on the GFCI device must be pressed each time the evaporative cooler is plugged in.

If the GFCI tripped and a simple "reset" will not work, please feel free to contact us.

## PLACEMENT

1. Make sure there is a clear, unobstructed path in front of the evaporative cooler to provide maximum airflow.
2. If the evaporative cooler is positioned on a raised platform, ensure the platform is stable, well constructed, and will not allow the evaporative cooler to tip over and that it allows for the full weight of the evaporative cooler including a tank full of water . The cooler must be level and in the upright position. The casters also be locked to prevent the evaporative cooler from moving.
3. If placed near a wall or other obstruction, position the evaporative cooler a minimum of 3 feet (0.9 meters) from the wall or obstruction with evaporation media facing the wall. This allows the unrestricted flow of warm air to the cool Comfort evaporative media side of the evaporative cooler. When using multiple evaporative coolers in close proximity, be sure to aim each evaporative cooler so the air flows complement each other to achieve maximum cooling capacity.

## STARTING THE PUMP AND ADJUSTING THE WATER FLOW

Once the tank is full of water , moving the pump switch to the"ON" position on the control panel with turn on the pump . When initially turning on the pump , the level in the water tank will drop suddenly and restart the flow of supply water . This is a normal condition , as the evaporative media requires a large amount of water for proper wetting.

New cool Comfort evaporative media will require an initial 'breaking-in' period. This period is required for the media to begin readily absorbing water. It may require to a week to achieve maximum efficiency.

It is important to ensure that the water flow to the evaporative media is properly adjusted when first starting the water flow in the evaporative cooler. Increasing the flow using the water adjustment valve makes this adjustment. Proper water adjustment should leave the evaporative media saturated with water, but not flooded.

Evaporative media should appear wet.

When turning the evaporative cooler off at the end of the day or week, the pump should be turned off about 15 minutes before the fan to allow the evaporative media to dry.

## STARTING THE BLUECO EVAPORATIVE COOLER

Start the fan by turning the fan switch to the desired speed on the control panel. Before starting, make sure casters in locked position.

### 1 . Speeds

The Rotary Switch control the air velocity of the cooler.Fan cooling speed - 1 speed,2 speed,3 speed,2 speed,1 speed,off.

### 2.Pump

Press the pump button once to power on and again to power off.

## DAILY MAINTENANCE

The pump should be turned off approximately 15 minutes before the fan is turned off, which allows the evaporative media to dry. Ensuring your evaporative media is dry at the end of the day not only extends its life,it also helps control the growth of media mold, bacteria and other odor-causing elements.

## WEEKLY MAINTENANCE

BLUECO evaporative cooler should be shut down, disconnected from power and the tank should b drained once a week by removing the drain cap. Once the tank is drained and the power disconnected, the evaporative media may be removed to allow cleaning of the tank, where dust may collect over time. Replace evaporative media in correct airflow direction, referring to the label on the evaporative media.

If conditions, such as hard water ,warrant, Hard Water Treatment can be purchased from authorized distributors. BLUECO Hard Water Treatment keeps minerals present in your water in solution and off of your evaporative media by changing the ionic structure of the particles. It can increase cooling efficiency, remove and inhibit scale building up, reduce equipment corrosion, and extend evaporative media life.

## STORAGE

1. Drain all water from the tank and wipe the tank clean, ensuring the evaporative media and tank the dry.
2. Roll up the power cord and secure it to ensure it will not be rolled over, tripped over or caught in equipment.
3. Cover the evaporative cooler completely to prevent dust build-up and store in a dry area. This also helps to prevent damage to the evaporative media.

## TROUBLE-SHOOT

Turn off all power to the evaporative cooler before attempting to troubleshoot any of the following symptoms. For problems not listed, please contact Customer Service.

SYMPTOM	POSSIBLE CAUSES	REMEDY	SYMPTOM	POSSIBLE CAUSES	REMEDY
Evaporative cooler fails to start or deliver air	<ol style="list-style-type: none"> <li>1. No electricity to the evaporative cooler</li> <li>A. Circuit breaker tripped</li> <li>B. GFCI tripped</li> <li>C. Power unplugged or damaged</li> <li>2. Motor overheated and/or frozen</li> </ol>	<ol style="list-style-type: none"> <li>1. Check power</li> <li>A. Reset breaker*</li> <li>B. Reset GFCI**</li> <li>C. Plug in cord(s) or replace if damaged</li> <li>2. Replace motor</li> </ol>	Knocking, shaking, or rattling sounds	<ol style="list-style-type: none"> <li>1. Loose parts</li> <li>2. Fan blade rubbing shroud</li> </ol>	<ol style="list-style-type: none"> <li>1. Check and tighten needed</li> <li>2. Inspect and adjust, or replace fan blade</li> </ol>
Evaporative cooler starts, but air delivery is inadequate	<ol style="list-style-type: none"> <li>1. evaporative media side of the evaporative cooler is too close to a wall</li> <li>2. Fan motor failure</li> <li>3. Capacitor failure</li> </ol>	<ol style="list-style-type: none"> <li>1. Move evaporative cooler at least three feet from the wall</li> <li>2. Replace fan motor</li> <li>3. Replace capacitor</li> </ol>	Musty or unpleasant odor	<ol style="list-style-type: none"> <li>1. Stale or stagnant in tank</li> <li>2. evaporative media is mildewed or clogged</li> </ol>	<ol style="list-style-type: none"> <li>1. Move evaporative cooler at least three feet from the wall</li> <li>2. Replace fan motor</li> <li>3. Replace capacitor</li> </ol>
Water draining from the evaporative cooler	<ol style="list-style-type: none"> <li>1. Seat in float valve leaking</li> <li>Drain plug not tight</li> </ol>	<ol style="list-style-type: none"> <li>1. Replace float valve</li> <li>2. Tighten plug</li> </ol>	Water droplets in the discharge air stream	<ol style="list-style-type: none"> <li>1. Too much water delivered to evaporative media</li> <li>2. Leaking hose</li> </ol>	<ol style="list-style-type: none"> <li>1. Make sure evaporative media is properly positioned in the frames and evaporative cooler is level</li> <li>2. Tighten connection or replace hose</li> </ol>

## TECHNICAL SUPPORT

Technical support and services is available directly from your distributor.

## **WARRANTY AND REPLACEMENT PARTS**

### **BLUECO EVAPORATIVE COOLER LIMITED WARRANTY**

For one (1) year from date of purchase, BLUECO warrants any original component part or parts of its BLUECO portable evaporative coolers (the "Equipment") that are found, upon examination by factory-authorized personnel, to be defective in material or workmanship.

Notwithstanding anything herein to the contrary, BLUECO warrants its housings for the full lifetime of the product to the extent they are found, upon examination by factory-authorized personnel, to be defective in material or workmanship. The Lifetime Warranty on product housings is void if the housing is found upon examination by BLUECO to have been misused, abused or otherwise tampered with by unqualified personnel. The Lifetime Warranty on product housings does not cover ordinary wear and tear and is non-transferrable.

If the equipment and/or its original component parts, including product housings, develop a defect by this limited warranty within the applicable time periods described above, the same may be repaired or replaced at the option of BLUECO.

All transportation charges for shipment of the Equipment and/or its component parts that are submitted for replacement or repair under this warranty must be borne by the purchaser.

This warranty is void if: i) the Equipment and/or its component parts are found to have been misused, abused, repaired by or tampered unqualified personnel; ii) any of the product's component parts have been replaced with parts that were not authorized BLUECO replacement parts; iii) the product has been modified in any way (other than repairs made by qualified individuals with BLUECO replacement parts); iv) the has not been appropriately registered by its original purchaser; or v) the customer cannot show proof of purchase as the product's original owner.

#### **Q. What assembly is required?**

A None. BLUECO evaporative coolers are ready to use right out of the box.

#### **Q. How do I prepare my evaporative cooler for storage?**

A Drain the evaporative cooler dry out the evaporative media, cover the evaporative cooler and store in a dry place.

#### **Q. I just ran my evaporative cooler for the first time and there is an unpleasant odor.**

A. Our unique design and manufacturing technique, together with our superior materials, enable our products to perform efficiently within a wide range of conditions. When installed correctly, our evaporative media products allow complete molecular evaporation of water ensuring pure, clean stream of air. When new, it is possible that a small amount of aromatic molecules may evaporate along with the water molecules, which could be detected as a slight smell. This scent lessens in time. Our product does not, in any way, allow harmful chemicals to be evaporated into the air stream.

#### **Q. My evaporative cooler is not putting out any cool air.**

A. First, make sure the water source and electricity source are connected and working. Second, check to see if the evaporative media is damp. If not, adjust the water flow with the water adjustment valve. Third, make sure there is water in the tank. It should be allowed to fill before you turn the pump on.

#### **Q. What is the best environment to produce the most cool air?**

A. For optimum performance, the temperature should be 85°F or higher and the relative humidity should be below 75%. However, BLUECO evaporative coolers will reduce the temperature in almost any environment, making it more comfortable.

#### **Q. How often should my Comfort evaporative media be replaced?**

A. Depending on the quality of maintenance and frequency of use, Comfort evaporative media typically last up to five years. However, should you have any questions about the life of the media in your

BLUECO portable evaporative cooler, please call our Customer Service department for more detailed information.

**Q. What is the difference between evaporative cooling and misting systems?**

A. Misting systems spray a shower of water into the air that will collect on people, objects, equipment, floors, etc. BLUECO evaporative coolers use the process of evaporation to produce cooler air, but do not produce a mist.

**Q. Where can I buy replacement parts?**

A. Replacement parts may be purchased online at or from any BLUECO distributor. You may also contact BLUECO Customer Service department for additional assistance.

**Q. What is the amount of moisture produced?**

A. An increase in humidity of approximately two to five percent is produced, depending on the temperature and humidity of the environment. This increase is not noticeable in a ventilated area where the air produced by the cooler is exhausted.

**Q. How long will the water supply last in the tank?**

A. With no direct water source available, the water will evaporate in a filled tank within two to 10 hours of operation, depending on the water capacity of the evaporative cooler, ambient conditions, temperature and humidity. A water source for refilling the tank is recommended by the manufacturer.

## HOW TO REPLACE YOUR COMFORT EVAPORATIVE MEDIA

**Step 1**

Be sure to unplug your BLUECO potable evaporative cooler before doing any maintenance. Lock the casters to keep your evaporative cooler from moving while you are working. Remove the flap and Comfort evaporative media from the evaporative cooler. The flap is attached at the top of the evaporative cooler with screws. Remove the screws and set the flap aside.

**Step 2**

All Comfort evaporative media must be removed before accessing the inside of the evaporative cooler. Remove the center set of Comfort evaporative media first by grasping at the top and tilting it out and away from the evaporative cooler. While tilting the Comfort evaporative media out, lift it up and out of the evaporative cooler.

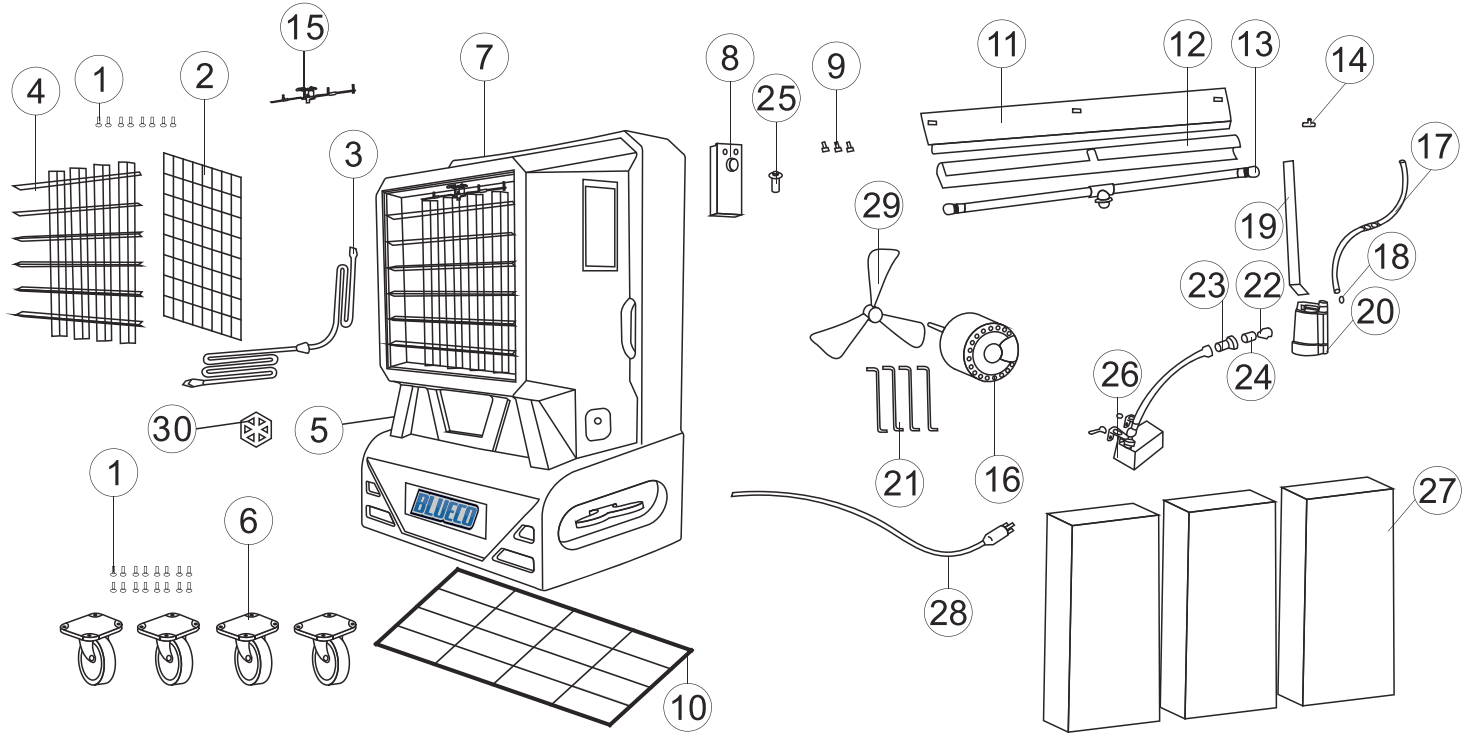
**Step 3**

Remove remaining Comfort evaporative media in the same manner. Set aside in a safe place to prevent damage while out of the evaporative cooler. Once all the Comfort evaporative media has been removed, you should have access to the inside of evaporative cooler and internal components.

**Step 4**

Replace your Comfort evaporative media by beginning on the outer edges and working towards the center. Pay close attention to the stickers on the evaporative media the arrow sticker should point up and inward. Replace evaporative media flap, securing it with screws.





ref#	description	qty	ref#	description	qty	ref#	description	qty
1	Screw	32	12	Spray Bar Bonnet	1	23	Inlet Water Regulator	1
2	Fan blade protective grill	1	13	Spray bar	1	24	Inlet Hose Adapter	1
3	Internal conductor	1	14	Joint	1	25	Circuit breaker protector	1
4	Shutter	1	15	Shutter controller	1	26	Constant water inlet shut-off valve	1
5	Fill cap	1	16	Variable speed fan motor	1	27	Evaporative media pads	3
6	Caster set	1	17	Sight Tube	1	28	GFCI plug/cord	1
7	Cooling fan shell	1	18	Wire Spring Clamp	1	29	Venturi shroud	1
8	Electronic Touch Pad Control	1	19	Submersible pump mount bracket	1	30	The water level switch	1
9	Spray Bar Bonnet For	3	20	Submersible pump	1	31		
10	Caster support	1	21	Bracket	1	32		
11	Media holder splash guard	1	22	Float Bolt	2	33		







**AIRSTREAM** *INSTRUCTION MANUAL*

[www.Bluecobrand.com](http://www.Bluecobrand.com)