



Mako Inc.

Sample 409-082422-182

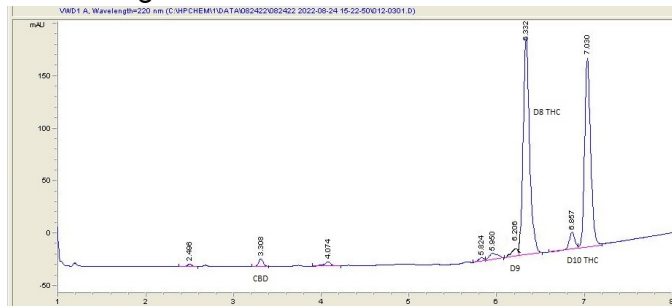
Delta 10 - Strawberry Banana Kush

Sample Submitted: 08-24-2022; Report Date: 08-26-2022

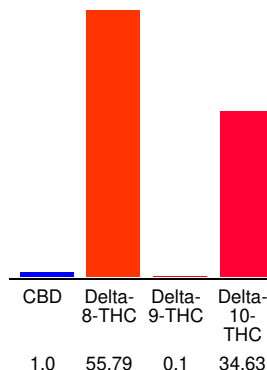
## Delta 10 - Strawberry Banana Kush

Distillate

### Chromatogram



### Cannabinoid Profile



### Cannabinoid Profile by HPLC

**0.10%**

Calculated Delta-9-THC Yield

**1.00%**

Calculated CBD Yield

**91.52%**

Total Cannabinoids

Cannabinoid	% wt	mg/g
CBD	1.0	10.0
Delta-8-THC	55.79	557.9
Delta-9-THC	0.1	1.0
Delta-10-THC	34.63	346.3
<b>Total Cannabinoids</b>	<b>91.52</b>	<b>915.2</b>
<b>Calculated Delta-9-THC Yield</b>	<b>0.10</b>	<b>1.00</b>
<b>Calculated CBD Yield</b>	<b>1.00</b>	<b>10.00</b>

Calculated Maximum Delta-9-THC Yield = Delta-9-THC + 0.877 \* THCA  
 Calculated Maximum CBD Yield = CBD + 0.877 \* CBDA

**Marin Analytics, LLC**

250 Bel Marin Keys Blvd, Suite D4  
 Novato, CA 94949

415-936-6477 / sarabiancalana1@gmail.com

**Sara Biancalana**  
 Chief Scientist

This sample has been tested by Marin Analytics, LLC using valid testing methodologies and a quality system. Values reported relate only to the sample tested. Marin Analytics, LLC makes no claims as to the efficacy, safety or other risks associated with any detected or non-detected levels of any compounds reported herein. This Certificate shall not be reproduced except in full, without the written approval of Marin Analytics, LLC.