



*The new gold standard
for laboratory glassware.*





The new gold standard for laboratory glassware.

Designed to meet the needs of the most demanding laboratory professionals, Globe Glass™ laboratory glassware sets the standard for performance and packaging in the glassware marketplace. Top quality borosilicate glass delivers outstanding strength, durability, and chemical resistance. Superior GlassGuard™ packaging has been engineered to ensure that Globe Glass™ products arrive at their destination intact and ready for use, each and every time. Globe Glass™ beakers, Erlenmeyer flasks, volumetric flasks, graduated cylinders, and media bottles are offered in sizes most commonly used in laboratories everywhere.





Globe Glass™ Gold Standards

Premium Raw Materials

Globe Glass™ laboratory glassware is made exclusively from ASTM E438, Type I, Class A, 3.3 borosilicate glass for excellent resistance to thermal shock and high chemical resistance to most acids, alkalis, and solvents.

ASTM Compliant Designs

Globe Glass™ laboratory glassware meets applicable ASTM standards for volume, shape, dimensions, graduation markings, and calibration. These ASTM standards are clearly marked for easy confirmation that each piece of Globe Glass™ laboratory glassware will meet the needs of laboratory professionals.

Precision Manufacturing

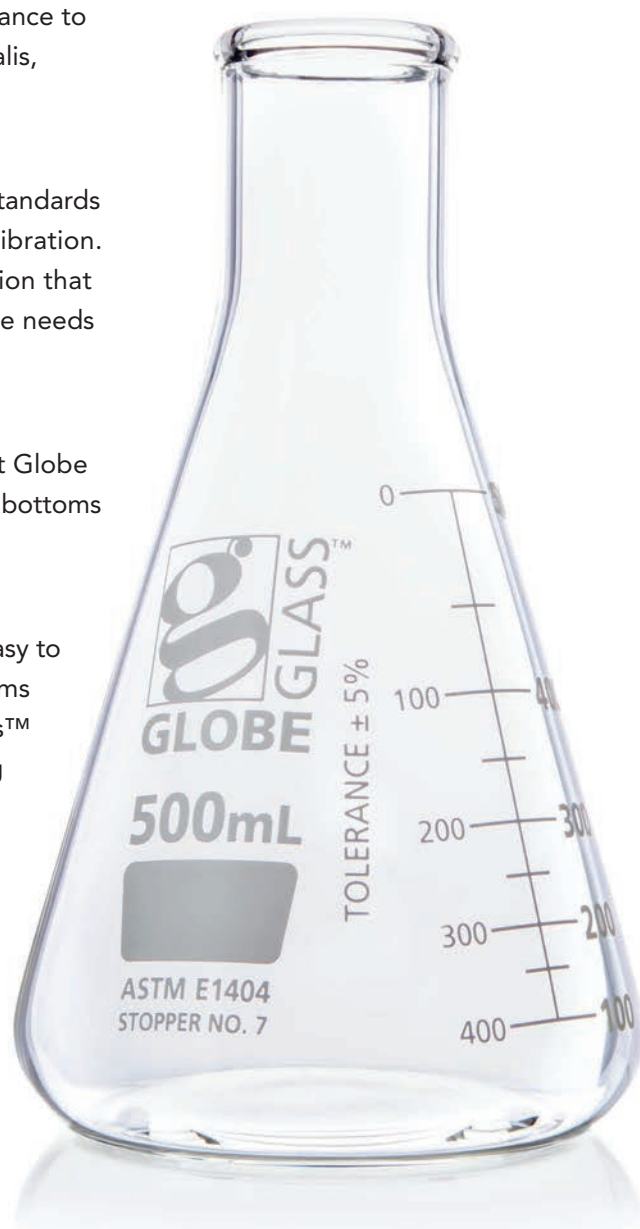
Computer controlled, automated production lines ensure that Globe Glass™ laboratory glassware has consistent wall thickness, flat bottoms free of striations, and precise forming of rims and spouts.

White Enamel Marking

Permanent white enamel markings are ASTM compliant and easy to read. Dual metric scale graduations are included on most items for easy reference while filling or dispensing. Most Globe Glass™ laboratory glassware items include a large, convenient marking area for coding or identification.

Quality Systems

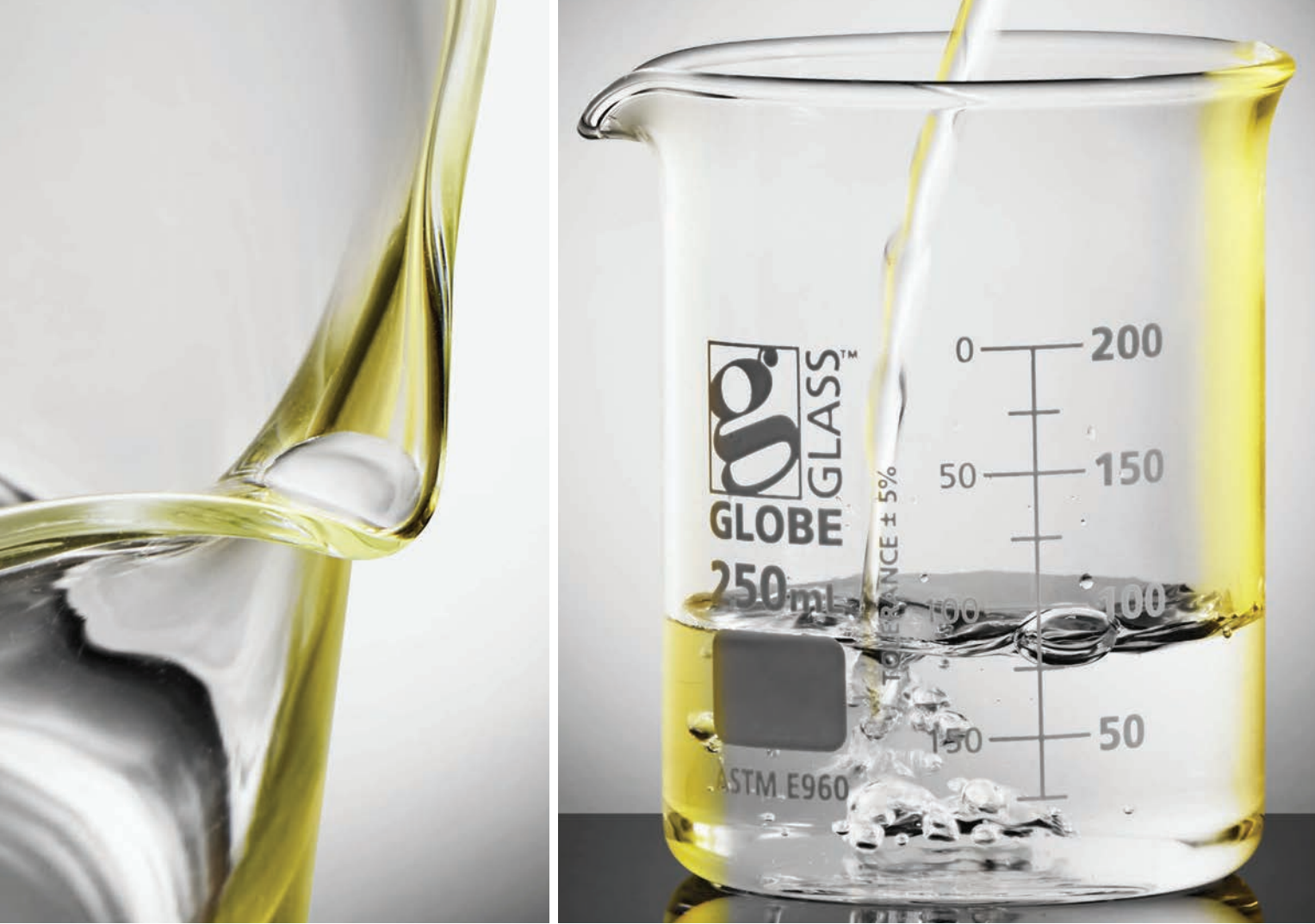
Globe Glass™ laboratory glassware is manufactured under stringent quality controls. Manufacturing facilities are ISO 9001 certified and in-house calibration is performed in an ISO 17025 certified laboratory.



Exclusive GlassGuard™ Packaging System

Engineered to meet the hazards and rigors of transportation, GlassGuard™ packaging protects Globe Glass™ laboratory glassware during shipment. Robust packaging designs begin at the pack level and extend to the full case packaging. Heavy duty, multi-layered corrugated container systems meet rigid quality standards and testing protocols to provide exceptional protection from damage, even in the small parcel shipping environment.





Low Form Griffin Style Beakers

Uniform wall thickness, flat bottoms, and low expansion 3.3 Borosilicate glass make Globe Glass™ low form Griffin style beakers strong and durable with excellent resistance to thermal shock. Beaded rims and formed spouts facilitate accurate and steady pouring of liquids. Globe Glass™ low form Griffin style beakers are available in sizes from 10mL to 4000mL.

- ASTM E960 Type I Specifications
- Formed pour spout for easy pouring
- High resistance to chemicals
- Uniform wall thickness
- Dual metric scale graduations
- Durable white enamel printing
- Large white marking area



See full product table on page 16. >>



Erlenmeyer Flasks

Globe Glass™ Erlenmeyer flasks meet ASTM E1404 specifications for narrow mouth, wide mouth and screw cap options and are available in a wide range of sizes. Wide mouth flasks allow easy access to contents, while screw cap flasks include a GL45 cap with a PTFE liner for a leak resistant closure. Globe Glass™ narrow and wide mouth Erlenmeyer flasks are designed with reinforced, beaded rims for strength and resistance to chipping.

- Meet ASTM E1404 Specifications
- High resistance to chemicals
- Uniform wall thickness
- Reinforced beaded rims to resist chipping*
- PTFE lined GL 45 polyethylene (PE) screw cap **
- Dual metric scale graduations *
- Single metric scale graduations**
- Durable white enamel printing
- Large white marking area

*Narrow and wide mouth options

**Screw cap options

See full product table on page 16. >>





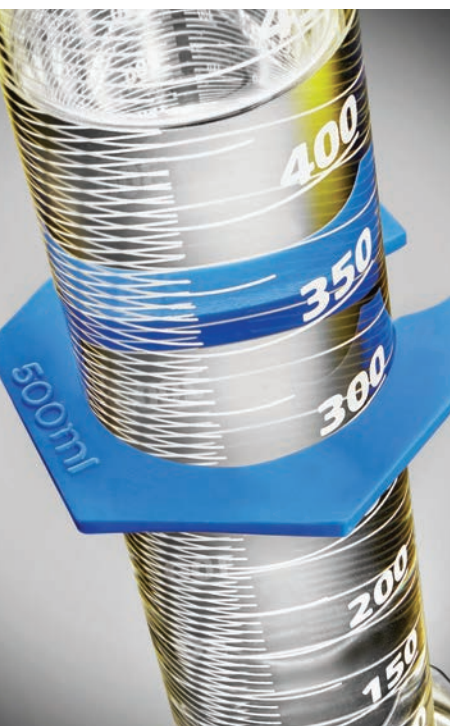
Volumetric Flasks

Each Globe Glass™ volumetric flask is calibrated to meet ASTM tolerance specifications for precise measurement in solution preparation and dilution. A diamond etched graduation line indicates the calibrated capacity of each flask. Wide mouth options are available for easier filling and mixing. Globe Glass™ volumetric flasks are offered in sizes from 1mL to 2000mL and with Class A or Class B calibration tolerances. Class A volumetric flasks include a batch calibration report.

- Meet ASTM E288 Specification – Sizes 5mL to 2000mL
- Meet ASTM E237 Specification – Sizes 1mL and 2mL
- Calibrated TC – “To Contain”
- Class A calibration tolerance for highest accuracy and the most critical laboratory work
- Class B calibration tolerance for general laboratory work
- Supplied with glass pennyhead stoppers
- Diamond etched graduation marks
- High resistance to chemicals
- Durable white enamel printing
- Large white marking area

See full product table on page 17. >>



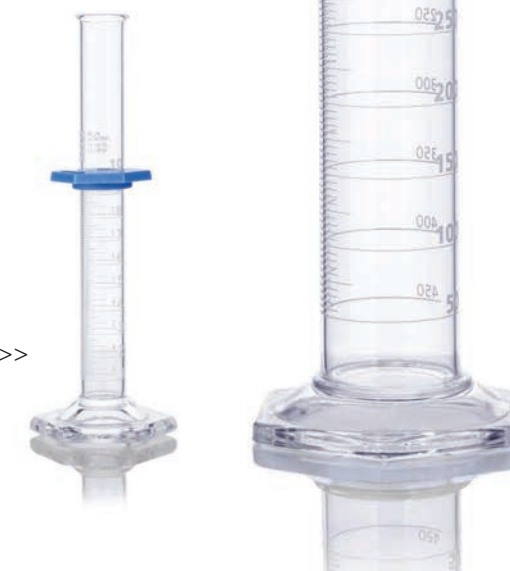


Graduated Cylinders

Calibrated to ASTM E1272 standards, Globe Glass™ graduated cylinders measure precise volumes of liquids. A solid hexagonal base provides stability, and an included polyethylene (PE) bumper guard helps to protect against accidental breakage. Globe Glass™ graduated cylinders are calibrated TD "To Deliver" and are available in sizes 5mL to 2000mL with Class A or Class B calibration tolerance options. Class A graduated cylinders include a batch calibration report.

- Meet ASTM E1272 Style 1 Specification
- Calibrated TD – "To Deliver"
- Class A calibration tolerance for highest accuracy and the most critical laboratory work
- Class B calibration tolerance for general laboratory work
- Pour spout for easy liquid transfer
- Beaded rim for strength and durability
- High resistance to chemicals
- Dual scale metric graduations
- Durable white enamel printing

See full product table on page 18. >>





Media Bottles

Globe Glass™ media bottles are designed with a wide mouth for ease of filling, dispensing, and pipetting. A drip-free pour ring and autoclavable polyethylene (PE) screw cap enable sterilizations of media and reagents. Globe Glass™ media bottles are available in sizes 50mL to 10000mL.

- ASTM E438, Type I, Class A, Borosilicate 3.3 Glass
- GL32 polyethylene (PE) screw cap on size 50mL
- GL45 polyethylene (PE) screw caps on sizes 100mL to 10,000mL
- Pouring ring for drip-free liquid transfer
- High resistance to chemicals
- Dual scale metric graduations
- Durable white enamel printing
- Large white marking area

See full product table on page 19. >>





Low Form Griffin Style Beakers

Item #	Capacity (mL)	Height (mm)	Widest Outside Diameter (mm)	Graduation Interval (mL)	Graduation Range (mL)	Pack Qty	Case Qty
8010010	10	33	23	NA	NA	12	48
8010020	20	43	30	5	5 to 15	12	48
8010030	30	53	33	10	5 to 25	12	48
8010050	50	58	39	10	10 to 40	12	48
8010100	100	73	50	10	20 to 80	12	48
8010150	150	88	57	10	20 to 140	12	48
8010250	250	95	67	25	25 to 200	12	48
8010400	400	113	77	25	25 to 325	12	48
8010600	600	125	88	50	50 to 500	6	36
8010800	800	135	98	50	50 to 750	6	24
8011000	1000	157	108	50	50 to 1000	6	24
8012000	2000	188	130	100	200 to 1800	4	8
8014000	4000	250	161	250	500 to 3500	1	6



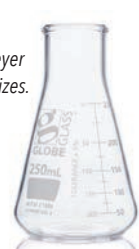
Griffin style beakers available in 13 sizes.

<< Return to product page.

Narrow mouth Erlenmeyer flasks available in 8 sizes.



Wide mouth Erlenmeyer flasks available in 4 sizes.



Screw cap Erlenmeyer flasks available in 4 sizes.

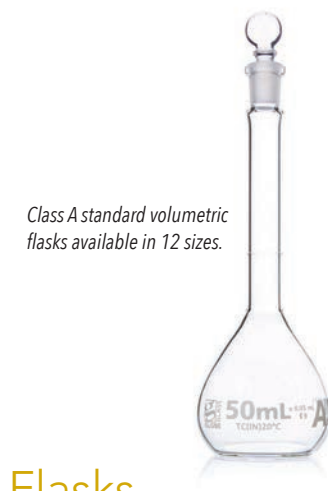


Erlenmeyer Flasks

Item #	Capacity (mL)	Height* (mm)	Widest Outside Diameter (mm)	Graduation Interval (mL)	Graduation Range (mL)	Rubber Stopper Size	Pack Qty	Case Qty
Narrow Mouth								
8400025	25	65	40	5	10 to 25	0	12	48
8400050	50	81	50	10	20 to 50	1	12	48
8400125	125	115	67	25	50 to 125	5	12	48
8400250	250	136	82	25	50 to 250	6	12	48
8400300	300	144	88	25	50 to 300	6	12	48
8400500	500	178	103	50	100 to 500	7	6	36
8401000	1000	219	128	50	250 to 1000	9	6	24
8402000	2000	280	164	100	600 to 2000	10	4	8
Wide Mouth								
8410125	125	115	67	25	50 to 125	6	12	48
8410250	250	136	82	25	50 to 250	8	12	48
8410500	500	103	103	50	100 to 500	10	6	36
8411000	1000	128	128	50	250 to 1000	11	6	24
Screw Cap								
Closure Size								
8420250	250	140	85	25	50 to 250	GL45	6	12
8420500	500	175	105	50	100 to 500	GL45	6	6
8421000	1000	220	131	50	250 to 1000	GL45	4	4
8422000	2000	280	166	100	600 to 2000	GL45	1	2

*Height is without cap.

<< Return to product page.



Class A standard volumetric flasks available in 12 sizes.



Class A wide mouth volumetric flasks available in 8 sizes.

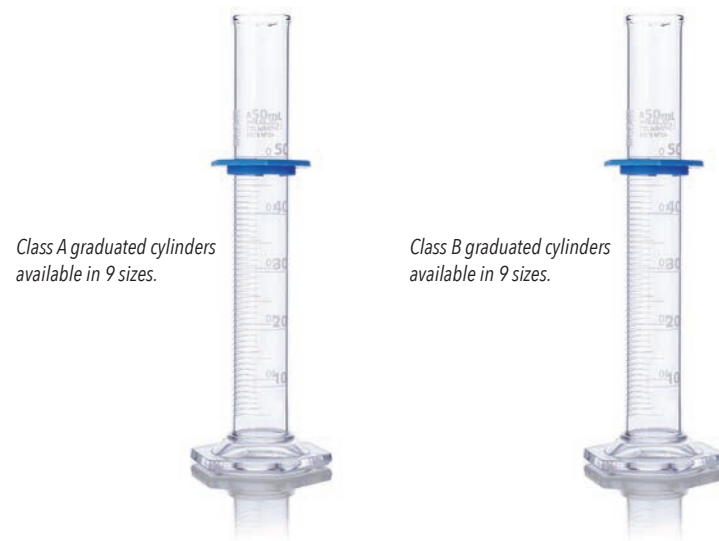


Class B standard volumetric flasks available in 9 sizes.

Volumetric Flasks

Item #	Capacity (mL)	Tolerance (mL)	Height Without Stopper (mm)	Outside Diameter (mm)	Stopper Size	Pack Qty	Case Qty
Calibration Class A							
8200001	1	0.01	65	13	8	6	12
8200002	2	0.02	70	17	8	6	12
8200005	5	0.02	70	22	9	6	12
8200010	10	0.02	90	28	9	6	12
8200025	25	0.03	111	40	9	6	12
8200050	50	0.05	140	50	9	6	12
8200100	100	0.08	170	60	13	6	12
8200200	200	0.10	210	75	16	6	12
8200250	250	0.12	222	80	16	6	12
8200500	500	0.20	260	100	19	6	12
8201000	1000	0.30	300	125	22	1	6
8202000	2000	0.50	370	160	27	1	4
Calibration Class A – WIDE MOUTH							
8230005	5	0.08	70	22	13	6	12
8230010	10	0.08	90	28	13	6	12
8230020	20	0.08	110	40	13	6	12
8230025	25	0.08	110	40	13	6	12
8230050	50	0.08	130	52	13	6	12
8230100	100	0.10	160	63	16	6	12
8230200	200	0.20	200	76	19	6	12
8230250	250	0.20	225	82	19	6	12
Calibration Class B							
8250010	10	0.04	90	28	9	6	12
8250025	25	0.06	111	40	9	6	12
8250050	50	0.10	140	50	9	6	12
8250100	100	0.16	170	60	13	6	12
8250200	200	0.20	210	75	16	6	12
8250250	250	0.24	222	80	16	6	12
8250500	500	0.40	260	100	19	6	12
8251000	1000	0.60	300	125	22	1	6
8252000	2000	1.00	370	160	27	1	4

<< Return to product page.



Class A graduated cylinders available in 9 sizes.

Class B graduated cylinders available in 9 sizes.



Media bottles available in 8 sizes.

Graduated Cylinders

Item #	Capacity (mL)	Tolerance (mL)	Graduation Interval (mL)	Height (mm)	Pack Qty	Qty
Calibration Class A						
8300005	5	0.05	0.1	113	1	6
8300010	10	0.1	0.1	137	1	6
8300025	25	0.17	0.2	167	1	6
8300050	50	0.25	1	195	1	6
8300100	100	0.5	1	257	1	6
8300250	250	1	2	330	1	4
8300500	500	2	5	385	1	4
8301000	1000	3	10	460	1	1
8302000	2000	6	20	565	1	1
Calibration Class B						
8330005	5	0.1	0.1	113	4	24
8330010	10	0.2	0.1	137	4	24
8330025	25	0.35	0.2	167	4	24
8330050	50	0.5	1	195	4	24
8330100	100	1	1	257	4	24
8330250	250	2	2	330	2	12
8330500	500	4	5	385	1	8
8331000	1000	6	10	460	1	4
8332000	2000	12	20	565	1	4

<< Return to product page.

Media Bottles

Item #	Capacity (mL)	Height* (mm)	Widest Outside Diameter (mm)	Graduation Interval (mL)	Graduation Range (mL)	Closure Size	Pack Qty	Case Qty
8100050	50	87	46	10	20 to 40	GL32	10	40
8100100	100	100	56	10	20 to 80	GL45	10	20
8100250	250	138	70	25	50 to 200	GL45	10	20
8100500	500	176	86	50	100 to 400	GL45	10	10
8101000	1000	225	101	50	100 to 900	GL45	10	10
8102000	2000	260	136	100	400 to 1800	GL45	10	10
8105000	5000	330	186	250	100 to 4500	GL45	1	1
810010K	10000	410	238	500	2000 to 9000	GL45	1	1

*Height is without cap.

<< Return to product page.

Technical Information

Globe Glass™ glassware is made exclusively from ASTM E438, Type I, Class A, 3.3 borosilicate glass. Low coefficient of thermal expansion provides exceptional resistance to thermal shock. The glass has chemical resistance to most acids, alkalis, and solvents.

Chemical Composition – Globe Glass™ raw material is a low alkali borosilicate glass typically composed of 81% SiO₂, 13% B₂O₃, and 4% Na₂O.

Thermal Properties:

- Coefficient of Linear Expansion: 32.5 x 10⁻⁷ cm/cm/°C
- Strain Point: 515°C
- Annealing Point: 565°C
- Softening Point: 820°C
- Specific Heat: 0.2
- Thermal Conductivity: 0.0027 Cal/cm³/°C/Sec

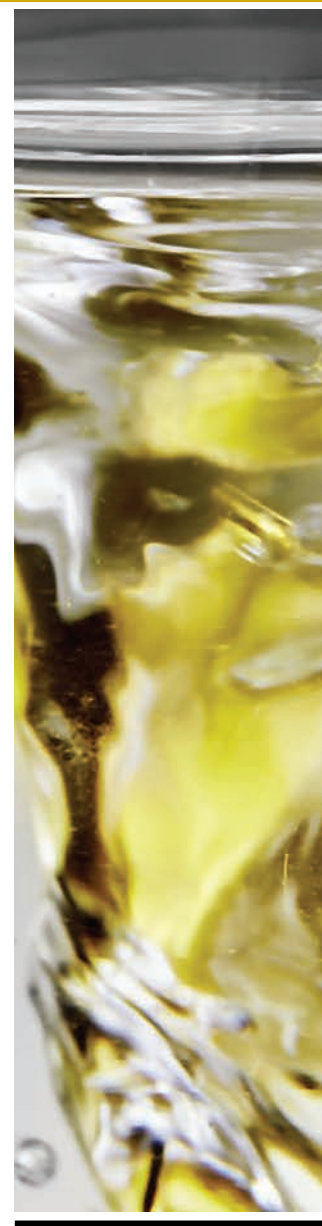
Chemical Resistance – Globe Glass™ borosilicate glass is highly resistant to water, neutral and acid solutions, concentrated acids and their solutions, as well as bromine, chlorine, iodine, and organic matter. Only hydrofluoric acid, very hot phosphoric acid, and alkaline solutions attack the glass.

Optical Properties – Globe Glass™ laboratory glassware appears colorless and shows no noticeable absorption of light in the visible spectrum.



Globe Scientific is a leading producer of high-quality laboratory plasticware, glassware and equipment. Our products are sold worldwide and are used in many industries including Clinical, Research, Hospital, Veterinary and Specialty markets.

- Analyzer Consumables
- Bags
- Beakers
- Bench Top Equipment
- Biohazard Specimen Bags
- Blood Collection Products
- Bottles
- Capillary Tubes
- Carboys
- Centrifuges
- Centrifuge Tubes
- Coolers, Chillers, Ice Buckets
- Containers
- Cryogenic Vials
- Cylinders
- Drug Test Containers
- Drying Racks
- ESR Systems
- Formalin Filled Containers
- Formalin Neutralization
- Funnels
- Glassware
- Inoculation Loops
- Microhematocrit Tubes
- Microcentrifuge Tubes
- Microscope Slides
- Microtitration Plates
- Pathology Containers
- PCR Products
- Pipettors
- Pipette Tips
- Racks, Dispensers, Boxes
- Reagent Reservoirs
- Serological Pipettes
- Slide Mailers
- Syringe Filters
- Tapes and Labels
- Test Tubes
- Transfer Pipets
- Urinalysis Products
- Vortex Mixers
- Weighing Dishes



www.globescientific.com
 Phone 1 (800) 394-4562 • 1 (201) 599-1400
 Fax 1 (201) 599-1406
 E-mail mail@globescientific.com

