



The Dentist's
Smart Choice



PRODUCT CATALOG

www.IQimplantsUSA.com



WELCOME TO **IQ IMPLANTS™!**

IQ Implants™ reflects many years of research and experience in dental implantology by its founders. As a result of productive collaboration between doctors, engineers and scientists, utilizing the advantages of computer aided technologies, a system of dental implants, prosthetics and surgical tools was developed to allow doctors a quick, safe and efficient path in implantology and restorative dentistry without compromise.

TABLE OF CONTENTS

IMPLANTS

04-05

Master SP	5
Smart SP	5
Smart Short SP	5
Smart NP	5
Logic	5

PROSTHETICS

06-17

Healing Abutments	7
Straight Abutments	7
Angled Abutments	8
Cosmetic Abutments	9
Zirconia Abutments	9
Aesthetic Abutments	10
Ball Abutments	11
Snap-On Abutments	11
Locator® Abutments By Zest	12
Temporary Abutments	13
Castable Abutments	13
Solid Multi Fix Abutments	14
Digital Solutions	15
Transfers and Analogs	15
Accessories For Narrow 3.0mm Platform	16
Accessories For Logic Implant	17

DRILLS

18-22

Straight Drills	19
Conical Drills	20
Miscellaneous Drills	20
Implant Drills Sets	21
Stoppers For Implant Drills	21
Drills With Integral Stoppers	22

TOOLS

23-26

Hex Drivers	24
Parallel Guides	25
Wrenches	25
Surgical Kits	26

iIMPLANTS



IMPLANTS

SP - STANDARD PLATFORM 3.75mm INTERNAL HEX

NP - NARROW PLATFORM 3.00mm INTERNAL HEX

SP MASTER



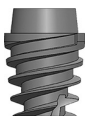
L \ Ø	3.3 mm	3.75 mm	4.2 mm	5 mm	6 mm
6 mm			●	●	●
8 mm	○	●	●	●	●
10 mm	○	●	●	●	●
11.5 mm	○	●	●	●	●
13 mm	○	●	●	●	●
16 mm	○	●	●	●	
18 mm			●		
20 mm			●		

SP SMART



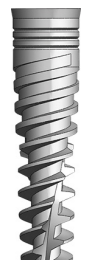
L \ Ø	3.3 mm	3.75 mm	4.2 mm	5 mm	6 mm
6 mm			●	●	●
8 mm	○	●	●	●	●
10 mm	○	●	●	●	●
11.5 mm	○	●	●	●	●
13 mm	○	●	●	●	●
16 mm	○	●	●	●	

SP SMART SHORT



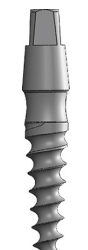
L \ Ø	4.2 mm	5 mm	6 mm	7 mm
5 mm	●	●	●	●

NP SMART NP



L \ Ø	3.3 mm
10 mm	●
11.5 mm	●
13 mm	●
16 mm	●
18 mm	●

LOGIC



L \ Ø	2.6 mm	3 mm	3.2 mm
10 mm	○	●	●
11.5 mm	○	●	●
13 mm	○	●	●
16 mm	○	●	●

PROSTHETICS



HEALING ABUTMENTS SP



Healing Abutment

L	CAT NO.
2 mm	2002
3 mm	2003
4 mm	2004
5 mm	2005
6 mm	2006
7 mm	2007
8 mm	2008
10 mm	2010



Contour Healing Abutment

L	CAT NO.
1 mm	2001R
2 mm	2002R
3 mm	2003R
4 mm	2004R
5 mm	2005R



Wide Healing Abutment

L	CAT NO.
2 mm	2032
3 mm	2033
4 mm	2034
5 mm	2035
6 mm	2036



Slim Healing Abutment

L	CAT NO.
3 mm	2023
5 mm	2025
7 mm	2027

STRAIGHT ABUTMENTS SP



Straight Abutment

L	CAT NO.
5 mm	3005
7 mm	3007
9 mm	3009
11 mm	3011
13 mm	3013
15 mm	3015



Slim Straight Abutment

L	CAT NO.
5 mm	3025
7 mm	3027
9 mm	3029
11 mm	3021



Contour Shouldered Abutment

L	CAT NO.
1 mm	3031R
2 mm	3032R
3 mm	3033R
4 mm	3034R



Straight Abutment with Shoulder

L	CAT NO.
1 mm	3031
2 mm	3032
3 mm	3033
4 mm	3034



Straight Anatomic Abutment

L	CAT NO.
1 mm	3041
2 mm	3042
3 mm	3043



Wide Straight Abutment for Standard Platform

CAT NO.	3009W
---------	-------



Connection Abutment

L	CAT NO.
1 mm	3801
2 mm	3801
3 mm	3801

ANGLED ABUTMENTS **SP**



Angled Abutment 15°

	CAT NO.
Regular	3109
Long	3115



Angled Anatomic Abutment 15°

L	CAT NO.
1 mm	3141
2 mm	3142
3 mm	3143
4 mm	3144



Slim Angled Abutment 15°

CAT NO.	3129
---------	------



Angled Abutment 25°

	CAT NO.
Regular	3209
Long	3215



Angled Anatomic Abutment 25°

L	CAT NO.
1 mm	3241
2 mm	3242
3 mm	3243



Slim Angled Abutment 25°

CAT NO.	3229
---------	------



Angled Abutment 7.5°

CAT NO.	3075
---------	------



Angled Abutment 35°

CAT NO.	3335
---------	------



Angled Abutment 45°

CAT NO.	3345
---------	------

COSMETIC ABUTMENTS SP



Straight Cosmetic Abutment

L	CAT NO.
1 mm	5031
2 mm	5032
3 mm	5033
4 mm	5034



Angled Cosmetic Abutment 15°

L	CAT NO.
1 mm	5141
2 mm	5142
3 mm	5143



Angled Cosmetic Abutment 25°

L	CAT NO.
1 mm	5241
2 mm	5242
3 mm	5243

ZIRCONIA ABUTMENTS SP



Straight Zirconia Abutment on Titanium Base

L	CAT NO.
1 mm	3061
2 mm	3062
3 mm	3063



Angled Zirconia Abutment 15°

L	CAT NO.
1 mm	3161
2 mm	3162
3 mm	3163



Angled Zirconia Abutment 25°

L	CAT NO.
1 mm	3261
2 mm	3262
3 mm	3263



Zirconia Telescopic Abutment

CAT NO. 3400

AESTHETIC ABUTMENTS SP



**Plastic Sleeves
for Aesthetic and Connection
Abutments with/without hex**

	CAT NO.
with hex	3704
without hex	3705



**Titanium Sleeve without Hex
for Aesthetic Abutment**

CAT NO.	3707
---------	------



**Analog for
Aesthetic Abutment**

CAT NO.	3720
---------	------



**Aesthetic
Abutment**

L	CAT NO.
2 mm	3701
3 mm	3702
4 mm	3703



**Open Tray Transfer for
Aesthetic Abutment**

CAT NO.	3731
---------	------



**Closed Tray Transfer for
Aesthetic Abutment**

CAT NO.	3732
---------	------



**Driver for
Aesthetic Abutment**

CAT NO.	4079
---------	------



**Ratchet Hex
Driver 1.77mm**

CAT NO.	4077
---------	------

BALL ABUTMENTS SP



**Ball
Abutment**

L	CAT NO.
1 mm	3501
2 mm	3502
3 mm	3503
4 mm	3504
5 mm	3505
6 mm	3506
Metal Housing	3509



Standart

CAT NO. 3508



Soft

CAT NO. 3518



Extra Soft

CAT NO. 3519



Laboratory

CAT NO. 3517



Insertion and Extraction Tool for Ball Abutment

CAT NO. 3530



**Analog for Ball
Abutment**

CAT NO. 3533



**Impression Transfer
for Ball Abutment**

CAT NO. 3521

SNAP ON ABUTMENTS SP



**Snap On
Abutment**

L	CAT NO.
7 mm	3301
9 mm	3302
11 mm	3303
Transfer	3331



**Analog for Snap
On Abutment**

L	CAT NO.
7 mm	3311
9 mm	3312
11 mm	3313

A



B



Burn Out Caps

	CAT NO.
A - Rotational	3332
B - Antirotational	3334



**Angled Snap On
Abutments 15°**

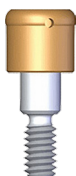
L	CAT NO.
1 mm	3341
2 mm	3342
3 mm	3343



**Angled Snap On
Abutments 25°**

L	CAT NO.
1 mm	3351
2 mm	3352
3 mm	3353

LOCATOR® ABUTMENTS by ZEST SP



Locator® Abutmen

L	CAT NO.
0.3 mm	01192
1 mm	01193
2 mm	01194
3 mm	01195
4 mm	01196
5 mm	01197
6 mm	01198



Male Processing Package

CAT NO. 08519



Ext Male Processing Package

CAT NO. 08540



Replacement Denture Cap Male Assembly

CAT NO. 08510



Impression Coping

CAT NO. 08505



Female Analog 4mm

CAT NO. 08530

REPLACEMENT RETENTIVE MALES

Dual Retention 0-10 degree

CAP	DESCRIPTION	CAT NO.
	5.0 Lbs Clear (2268g)	08524
	3.0 Lbs Pink (1361g)	08527
	1.5 Lbs Blue (680g)	08529
	Processing Repl	08515

Extended Range Angle Retention 10-20 deg

CAP	DESCRIPTION	CAT NO.
	3-4 lbs Green (1361-1814g)	08547
	2.0 Lbs Orange (907g)	08915
	0.5-1.5 Lbs Red (226-680g)	08548
	0 Lbs Gray (Zero Retention)	08558



Latch Type Torque Wrench Driver 23mm

CAT NO. 08913



Processing Spacer

CAT NO. 08569



Block-Out Spacer

CAT NO. 08514



Square Torque Wrench Driver 15mm

CAT NO. 08926



Locator® Core Tool

CAT NO. 08393

TEMPORARY ABUTMENTS SP



Shouldered Temporary PEEK Abutment

L	CAT NO.
1 mm	3051
2 mm	3052
3 mm	3053
4 mm	3054



Angled Temporary PEEK Abutment 15°

L	CAT NO.
1 mm	3151
2 mm	3152
3 mm	3153



Angled Temporary PEEK Abutment 25°

L	CAT NO.
1 mm	3251
2 mm	3252
3 mm	3253



Temporary Titanium Abutment

CAT NO. 3050

CASTABLE ABUTMENTS SP



Angled Castable Abutment 15°

L	CAT NO.
1 mm	3621
2 mm	3622
3 mm	3623



Angled Castable Abutment 25°

L	CAT NO.
1 mm	3631
2 mm	3632
3 mm	3633



Plastic Castable Abutments with / without Hex

	CAT NO.
A - with hex	3602
B - without hex	3603



Plastic Abutment for Casting

CAT NO. 3604



UCLA Abutments

	CAT NO.
A - Titanium with hex	3601
A - Chrome Cobalt with hex	3605
B - Titanium without hex	3606
B - Chrome Cobalt without hex	3607

SOLID MULTI FIX ABUTMENTS SP



Angled Multi Fix Abutments 17°

L	CAT NO.
1 mm	6221
2 mm	6222



Angled Multi Fix Abutments 30°

L	CAT NO.
1 mm	6231
2 mm	6232



Straight Multi Fix Abutment

L	CAT NO.
1 mm	6211
2 mm	6212
3 mm	6213
4 mm	6214
5 mm	6215



Open Tray Transfer

CAT NO. 6241



Closed Tray Transfer

CAT NO. 6242



Analog

CAT NO. 6233



Prosthetic Sleeves

	CAT NO.
A - Titanium	6202
B - Plastic	6201



Comfort Cap

CAT NO. 6200



ScREW

CAT NO. 6200-1

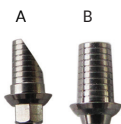


DIGITAL SOLUTIONS SP



Scan Body

CAT NO. 3608



Ti-Base
with / without Hex

	CAT NO.
A - with hex	3511
B - without hex	3512



Pre-milled
Titanium Blank

TRANSFERS AND ANALOGS SP



Impression Transfer
Press Fit for Closed Tray

CAT NO. 3404



Impression Transfers
for Closed Tray

	CAT NO.
A - Regular	3405
B - Short	3406



Impression Transfer
for Closed Tray

CAT NO. 3409



Impression Transfer
for Open Tray

CAT NO. 3401



Impression Transfers
for Open Tray

	CAT NO.
A - Regular	3407
B - Short	3408



Implant
Analog

CAT NO. 3333

ACCESSORIES FOR NARROW 3.0 MM PLATFORM **NP**



**Healing
Abutmen**

L	CAT NO.
2 mm	2002-30
3 mm	2003-30
4 mm	2004-30
5 mm	2005-30
6 mm	2006-30
7 mm	2007-30



**Straight
Abutment**

CAT NO.	3009-30
---------	---------



**Straight Abutment
with Shoulder**

L	CAT NO.
1 mm	3031-30
2 mm	3032-30
3 mm	3033-30
4 mm	3034-30



**Angled
Abutment 15°**

CAT NO.	3109-30
---------	---------



**Angled
Abutment 25°**

CAT NO.	3209-30
---------	---------



Ball Abutment

L	CAT NO.
1 mm	3501-30
2 mm	3502-30
3 mm	3503-30
4 mm	3504-30
5 mm	3505-30
6 mm	3506-30



Implant Analog

CAT NO.	3333-30
---------	---------

A B



**Impression Transfer
for Closed Tray**

	CAT NO.
A - Regular	3405-30
B - Short	3406-30

A B



**Impression Transfer
for Open Tray**

	CAT NO.
A - Regular	3407-30
B - Short	3408-30

ACCESSORIES FOR LOGIC IMPLANTS



Implant Analog
for Logic

CAT NO. 3333L



Telescope Cap
for Logic

CAT NO. 2023L



Impression Transfers
for Logic

CAT NO.	
A - Rotational	3401L
B - Antirotational	3402L



Drivers for Logic
Implants

CAT NO.	
A	4271
B	4272



Parallel Guide for Logic
Implants

CAT NO. 4091L

DRILLS



STRAIGHT DRILLS

REGULAR DRILLS

	Ø mm	External irrigation	Internal irrigation
	2.00mm	4031	4001
	2.50mm	4032	4002
	2.80mm	4033	4003
	3.20mm	4034	4004
	3.65mm	4035	4005
	4.20mm	4036	4006
	4.50mm	4039	4009
	4.80mm	4037	4007
	5.20mm	4038	4008
	5.50mm	4030	4000

SHORT DRILLS

	Ø mm	External irrigation	Internal irrigation
	2.00mm	4041	4021
	2.50mm	4042	4022
	2.80mm	4043	4023
	3.20mm	4044	4024
	3.65mm	4045	4025
	4.20mm	4046	4026
	4.50mm	4049	4029
	4.80mm	4047	4027
	5.20mm	4048	4028
	5.50mm	4040	4020

LONG DRILLS

	Ø mm	External irrigation	Internal irrigation
	2.00mm	4131	4141
	2.50mm	4132	4142
	2.80mm	4133	4143
	3.20mm	4134	4144
	3.65mm	4135	4145

COATED TWIST DRILLS

	Ø	mm	External irrigation
		2.00mm	4601
		2.50mm	4602
		2.80mm	4603
		3.20mm	4604
		3.65mm	4605
		4.20mm	4606
		5.20mm	4607

CONICAL DRILLS

	Ø mm	External irrigation	Internal irrigation
	1.8 - 2.4	4121	4101
	2.0 - 3.2	4122	4102
	2.5 - 3.7	4123	4103
	2.7 - 4.5	4124	4104



Drill Internal Irrigation
Ø 4.0 - 6.5mm

CAT NO.	4106
---------	------



Drill Internal Irrigation
Ø 5.0 - 7.5mm

CAT NO.	4107
---------	------

MISCELLANEOUS DRILLS

MARKING DRILL



Conical Drill Internal Irrigation
Ø 4.0 - 6.5mm

	CAT NO.
External	4150
Internal	4050

LANCE PILOT DRILLS



Conical Drill Internal Irrigation
Ø 5.0 - 7.5mm

mm	CAT NO.
1.2	4058
1.5	4059
Short	4259

COUNTERSINK DRILLS



Ø mm	CAT NO.
3.75 - 4.2	4051
5.0 - 6.0	4052

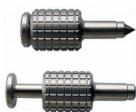
TREPINE DRILLS

	Ø mm	CAT NO.
	3-4	4053
	4-5	4054
	5-6	4055

PUNCH DRILLS

	Ø mm	CAT NO.
	3	4056
	4	4057
	4.5	4158
	5	4159

HAND TISSUE PUNCH



CAT NO. 4177

DRILL EXTENDER



CAT NO. 4177

IMPLANT DRILLS SETS



Autoclavable Box Set of 7 Straight Drills

CAT NO. 1113K



Autoclavable Box Set of 10 Straight Drills

CAT NO. 1114K



Autoclavable Box Set of 14 Reg & Short Drill

CAT NO. 1115K

STOPPERS FOR IMPLANT DRILLS



Stoppers Set for 2.0mm Drill

CAT NO. 4500



Stoppers Set for 2.5mm Drills

CAT NO. 4510



Stoppers Set for 2.8mm Drills

CAT NO. 4520



Stoppers Set for 3.2mm Drills

CAT NO. 4530



Stoppers Set for 3.65mm Drill

CAT NO. 4540



Stoppers Set for 4.2mm Drills

CAT NO. 4550

DRILLS WITH INTEGRAL STOPPERS



Drills with Integral
Stoppers 2.0mm Set

CAT NO. 4711K



Drills with Integral
Stoppers 2.5mm Set

CAT NO. 4721K



Drills with Integral
Stoppers 3.2mm Set

CAT NO. 4731K



Drills with Integral
Stoppers 3.65mm Set

CAT NO. 4741K



Drills with Integral
Stoppers 4.2mm Set

CAT NO. 4751K

TOOLS



HEX DRIVERS



Ratchet Hex Drivers 1.25mm

	CAT NO.
A	4071
B	4075
C	4072



Ratchet Hex Drivers 2.0mm **NP**

	CAT NO.
A - 10mm	4371
B - 15mm	4372
C - 18mm	4373
D - 22mm	4374



Ratchet Hex Drivers 2.5mm **SP**

	CAT NO.
A	4073
B	4074
C	4175



Latch Type Hex Drivers 1.25mm

	CAT NO.
A	4171
B	4172



Latch Type Hex Drivers 2.0mm **NP**

	CAT NO.
A	4376
B	4375



Latch Type Hex Drivers 2.5mm **SP**

	CAT NO.
A	4173
B	4174



Hand Hex Drivers 1.25mm

	CAT NO.
A	4076
B	4070
C	4078



Thumb Knob for Ratchet Hex Drivers

CAT NO.	4170
---------	------

PARALLEL GUIDES



Parallel & Depth Guides

	CAT NO.
A	4091
B	4092



Parallel & Depth Guides

	CAT NO.
A	4093
B	4094



Parallel Guide

CAT NO.	4097
---------	------



Depth & Gingival Gauge

CAT NO.	4096
---------	------

WRENCHES



Ratchet Wrench

CAT NO.	4080
---------	------



Universal Torque Wrench 10-45Ncm

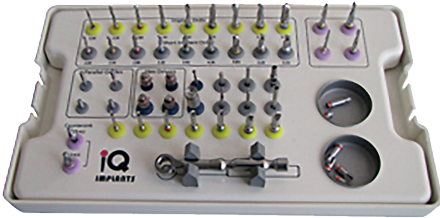
CAT NO.	4081
---------	------

SURGICAL KITS



Full Surgical Kit

CAT NO. 1111K



Standard Surgical Kit

CAT NO. 1117K



Safe Drills with
Integral Stoppers Kit

CAT NO. 1118K







The Dentist's
Smart Choice



www.IQimplantsUSA.com

1 Fox Field Ct,
Reisterstown, MD 21136

 855-747-1010
 info@IQimplantsUSA.com

