

INTRODUCTION

Thank you for purchasing the Dongar Technologies 10-pin Type B adapter. This document demonstrates installation into MY2018+ **(YOUR MODEL MAY VARY SLIGHTLY!!)** Please review this document in its entirety before attempting installation. Should you feel uncomfortable with the installation procedures, professional installation is highly recommended levels and model year. PLEASE CONTACT SUPPORT@DONGARTECHNOLOGIES.COM FOR VEHICLE SPECIFIC QUESTIONS.

PARTS

1x 10-pin TYPE B dashcam adapter
Shorty MicroUSB cable and Shorty MiniUSB cable



INSTALLATION

STEP 1: Ensure that the vehicle is completely turned off.

Performing the installation with the vehicle on may result in a blown fuse or other damage.

STEP 2: Remove the INNER plastic shroud at base of mirror (see Fig 1).

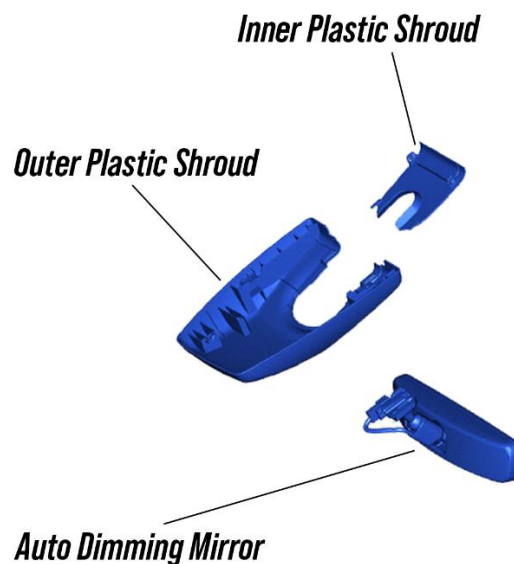


Figure 1: Schematic of plastic wire covers

Refer to Fig.2. Pry gently downwards at front edge of the mirror cover indicated by



Hold inner wire cover at edge as indicated by



Pull towards driver as indicated by

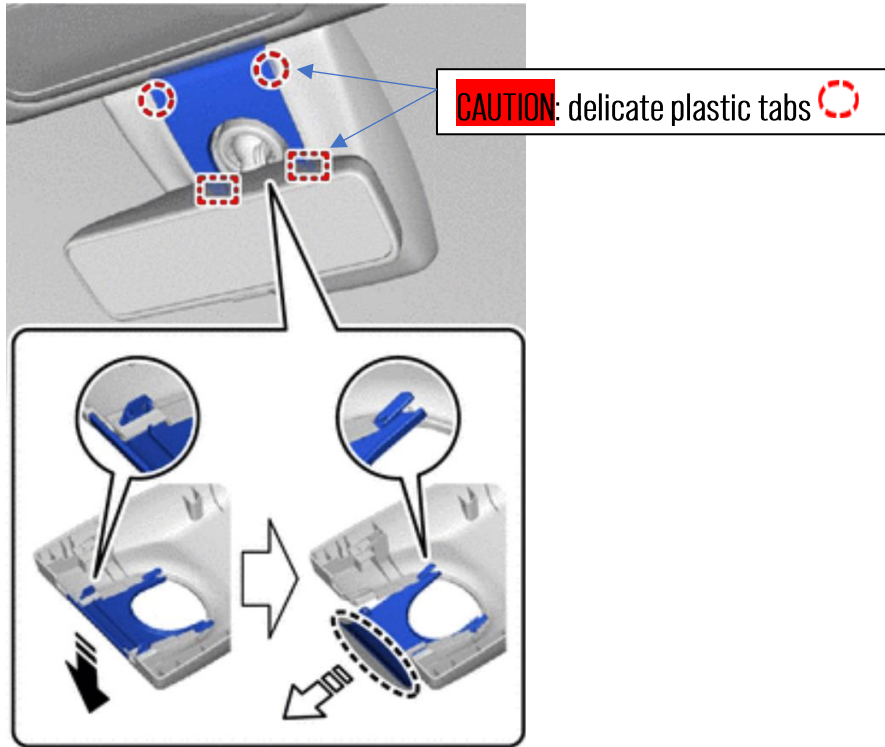


Figure 2: Inner plastic shroud removal

STEP 3: Remove OUTER plastic shroud. Refer to Fig.3. With the inner shroud removed, slide the outer cover toward the front of the vehicle as indicated by

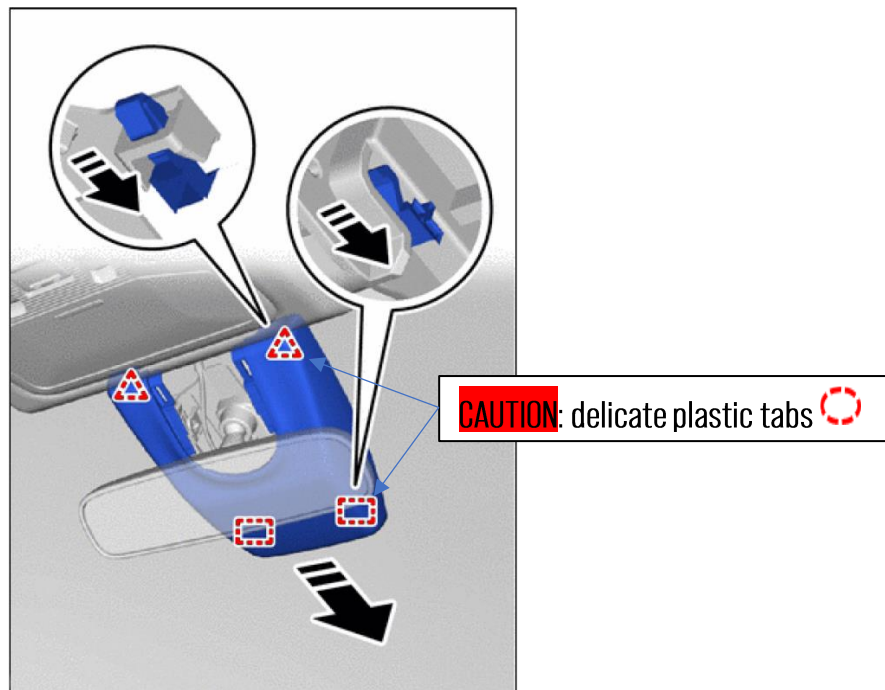


Figure 3: Outer plastic shroud removal

STEP 4: Disconnect mirror. Gently depress plastic tab in center of connector and pull. *Do not pull on the harness.* Refer to Fig. 3 for non-digital mirror connector location. Refer to Fig. 4 for digital mirror connector.

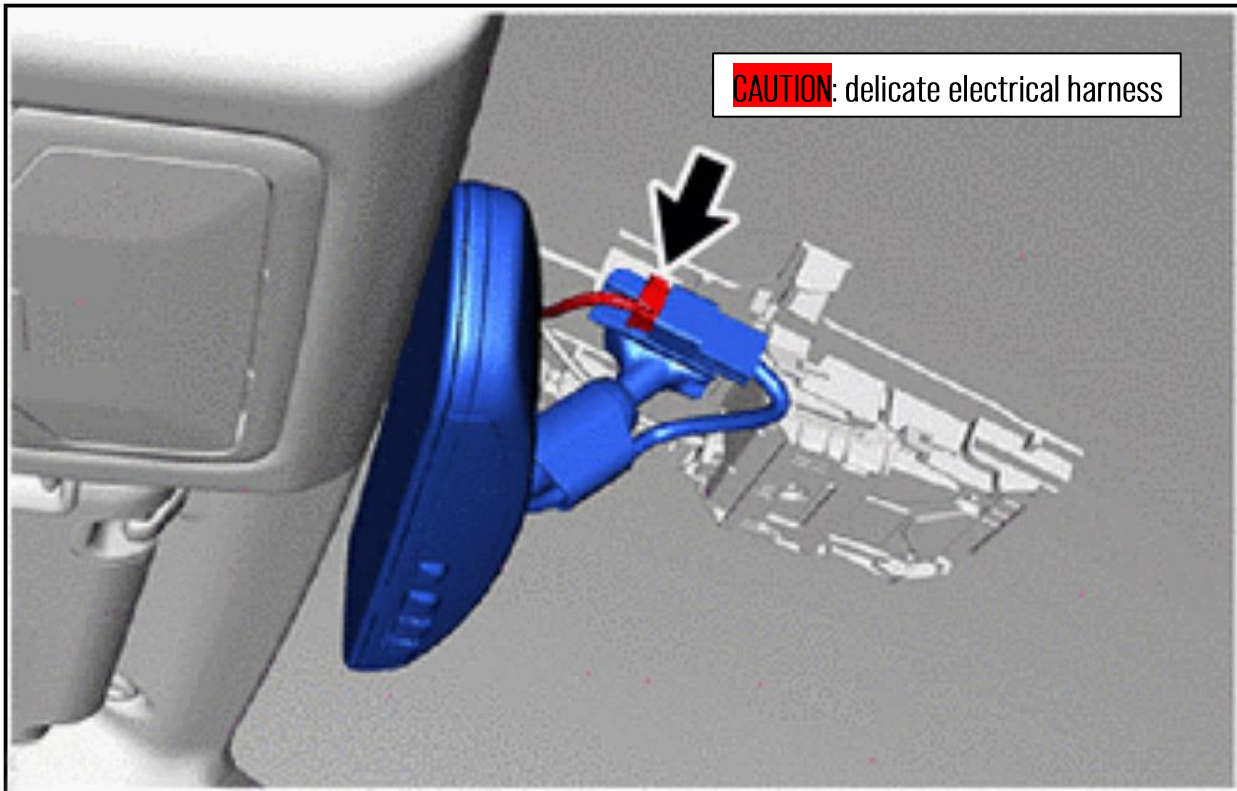


Figure 3: Autodimming NON-“DIGITAL MIRROR” Connector Location

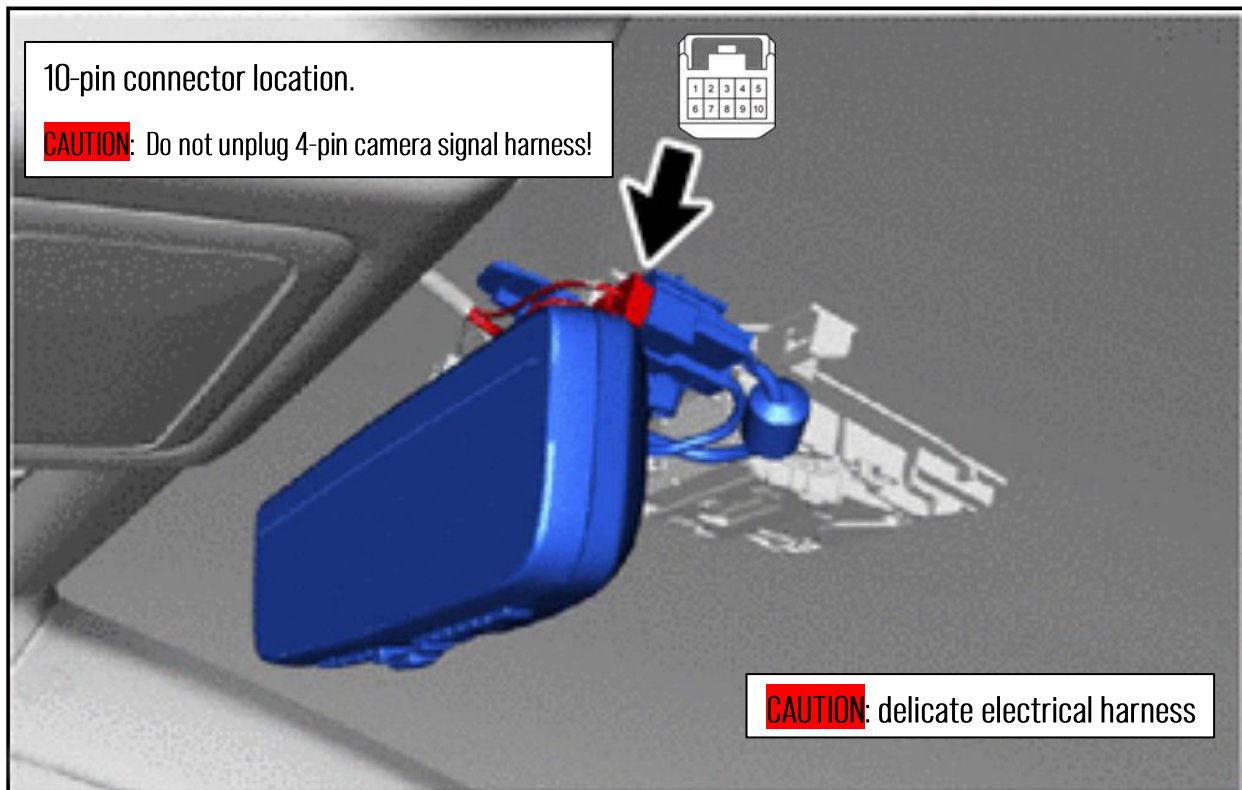


Figure 4: Digital Mirror Connector Location

STEP 5: Install Dongar 10-pin Type B adapter. Refer to Fig. 5. Gently insert male end of Dongar dashcam adapter into connector port. Gently insert original mirror harness into female end of Dongar dashcam adapter. Route USB output as desired

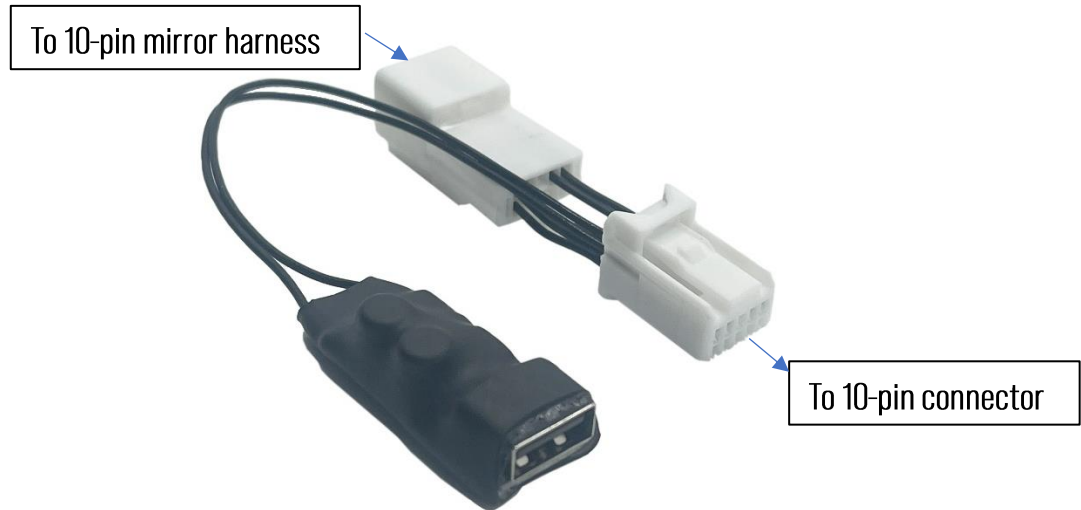



Figure 5: 10-pin Type B adapter

STEP 6: Reinstall Outer Mirror Shroud. Refer to Fig.6. Position the plastic shroud against the windshield. Slide the cover up towards the roof, ensuring all 4 latches indicated by  lock into place.

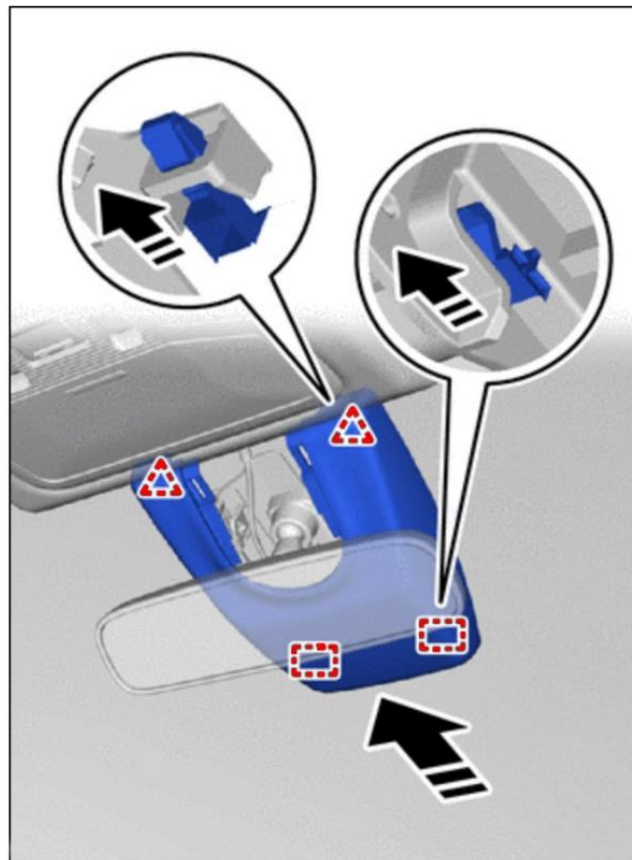





Figure 6: Outer plastic shroud reinstallation

STEP 7: Reinstall Inner Mirror Shroud. Refer to Fig. 7. Insert forward end of inner plastic shroud into outer plastic shroud as indicated by  Holding edge of inner plastic shroud, gently press into outer plastic shroud as indicated by  ensuring the plastic latches indicated by  lock into place.

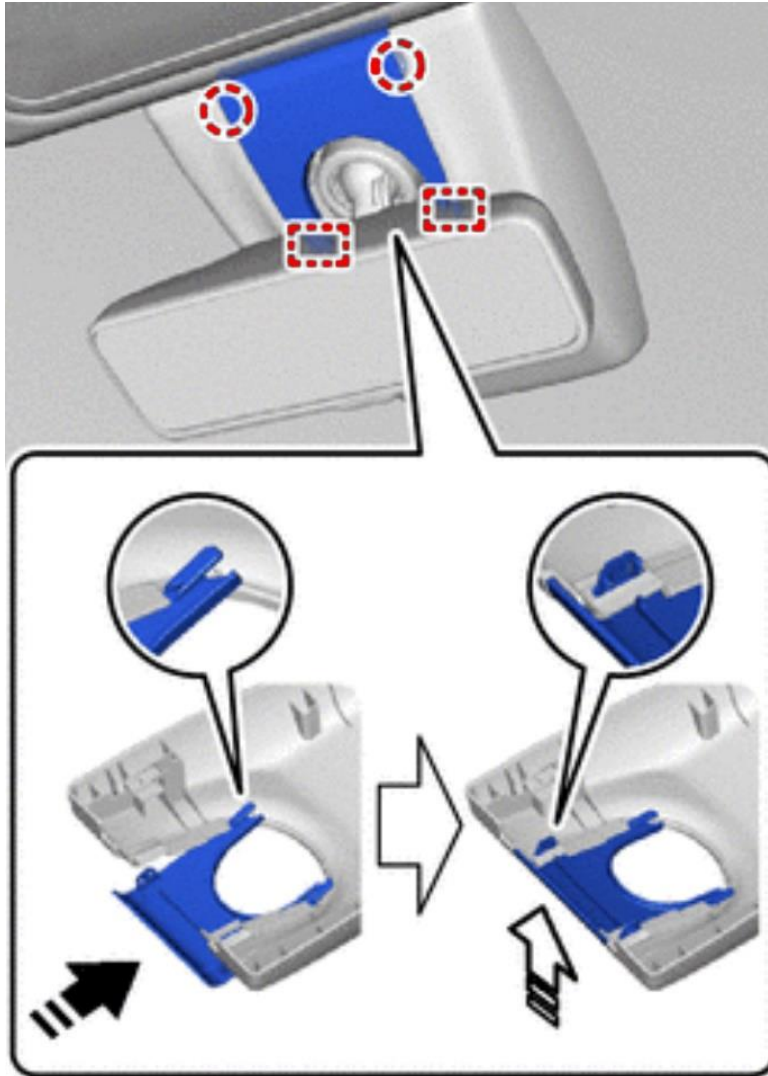


Figure 7: Inner plastic shroud reinstallation

SUPPORT

Comments? Questions? Installation Help? Email us! SUPPORT@DONGARTECHNOLOGIES.COM

Like this product? Leave a product review or follow us at:



DONGARTECH



DONGARTECHNOLOGIES