



## Blackmagic 4K Pocket Cage

The Blackmagic 4K Pocket Camera Cage is our "no-cage" cage compatible with the Blackmagic 4K Pocket Cameras. It is lightweight and compact, and packs in a ton of features! It includes a Zacuto camera hand strap for a secure and comfortable grip on the camera and a left wooden handgrip with a built-in cold shoe for optimal handling. The cage also comes with strain relief clamps and right angle adapters for both the USB and HDMI connectors.

The top of the cage includes numerous 1/4"-20 for mounting accessories. It also has a built-in Z-Rail for mounting an optional top handle or other accessories. The bottom of the cage has two 1/4"-20 threads and a 3/8"-16 thread for a tripod plate and a built-in Arca Swiss compatible plate to mount to any Arca Swiss compatible quick release mounting base or the Polaris Mounting Plate. This allows you to move quickly from handheld, to shoulder mount, to tripod shooting.

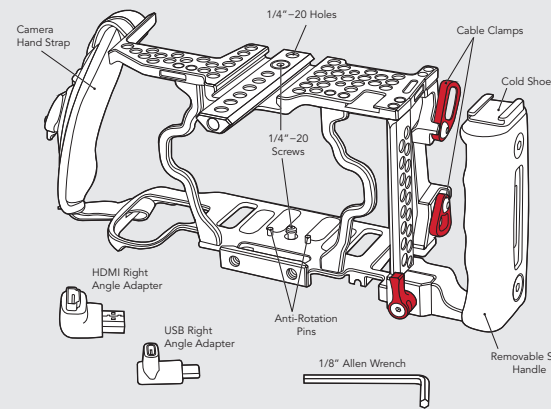
If you'd like to add rods onto your cage, you can slide the cage into our Polaris Rod Support and from there you can also build a shoulder rig.

The cage is designed for full access to the camera's battery door and full button control. There is also an optional Metabones adapter support and SSD holder.

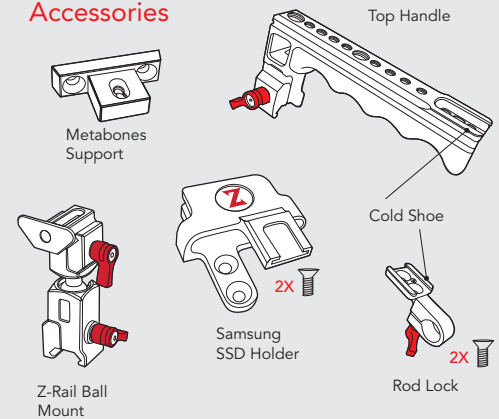


Check out our tutorial videos at [zacuto.com](http://zacuto.com)

## Parts and Features

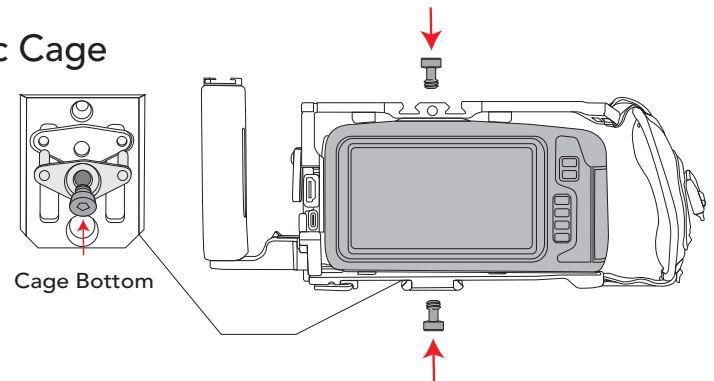


## Optional Accessories



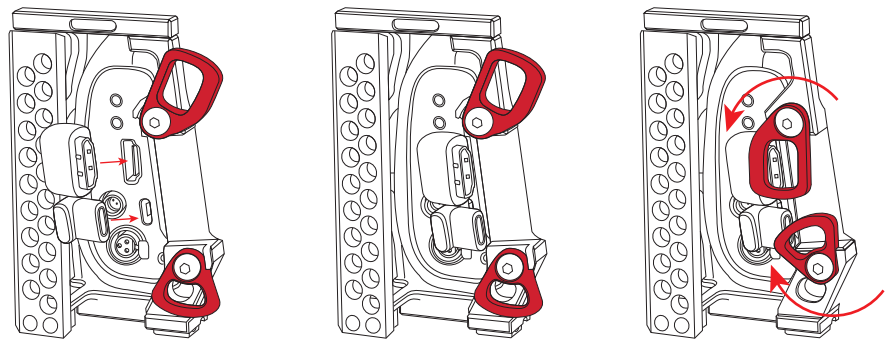
## Assembling Blackmagic Cage

Insert the camera into the cage and secure by tightening the two 1/4"-20 screws, one on the top and bottom, by using the Allen on the bottom of the cage.



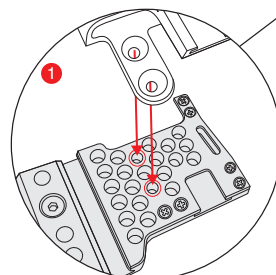
## Installing Adapters

To install right angle adapters, loosen allen screws and rotate clamps. Insert right angle adapters into camera and cables into right angle adapters. Rotate cable locks and tighten allen screws to secure both right angle adapters and cables.



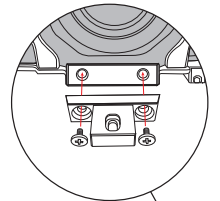
## Installing SSD Card Holder

The SSD Holder can be screwed to the top of the cage on the left-hand side with two Phillips head screws.



## Assembling Metabones\*

The Metabones adapter can be screwed into the two holes on the base of the cage.



\* There are two metabones adapters. One for speed boosters and smart adapters, and one for CINE adapters. Please contact Zacuto to ask which version you need.

