



**INSTALLATION**  
**INSTRUCTIONS FOR:**  
**RZR PRO R/TURBO R**  
**MODELS (2 & 4 SEATER)**

# REAR BRACKETS

1

Remove the anti-rotation arm from the rear track. Use the factory bolts to install our relocation bracket (as shown in picture below).



2

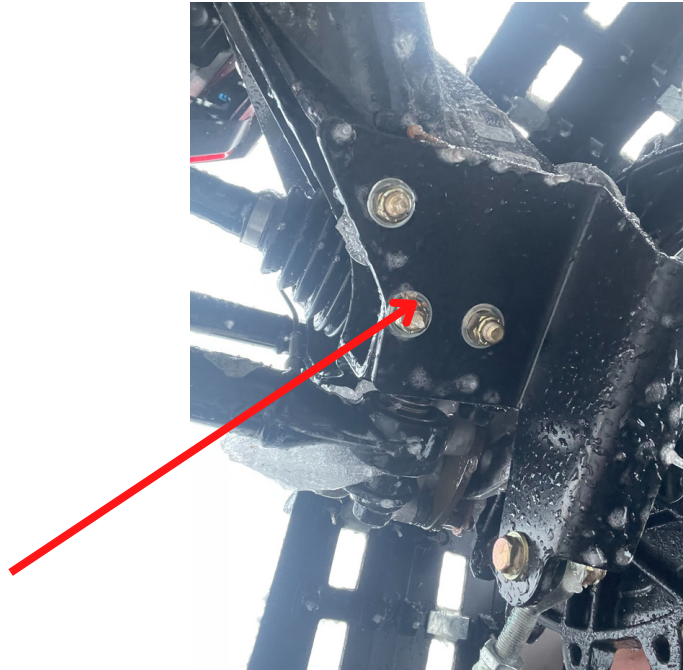
Re-install anti-rotation silver bracket and anti-rotation arm to our bracket with supplied 3/8-inch x 1 +1/4-inch-long bolts.



**3** Start by removing the rear tires and mud scraper on trailing arm. Use factory mud scraper bolt (as indicated by red arrow below) to secure the bracket to the trailing arm so you can drill out additional bolt holes using a 3/8-inch drill bit.

\*\*\*Brackets are side specific and will match trailing arm

Once you have the 3/8-inch bolts tightened up in the drilled holes, remove the mud scraper bolt that was used to secure the bracket to the trailing arm and drill that out for the 3rd 3/8-inch bolt.



**4** Lower the machine down with the tracks on.

Once suspension is settled into operating stance, adjust heim joints to match up with our bracket and secure with grade 8, 2-inch gold bolts with 4 washers.

See step 5 for further explanation.



**5**

Use grade 8, 2-inch-long bolts with 4 washers supplied in the kit to attach heim joint to the bracket to complete the anti-rotation system.

Figure below depicts how washers are used to install the heim joint to our bracket from the anti-rotation arm on all 4 corners (one on each outside and 2 between heim joint and bracket).

\*\*\*DO NOT take the heim joint out of the arm -- picture below is for demonstration purposes only.



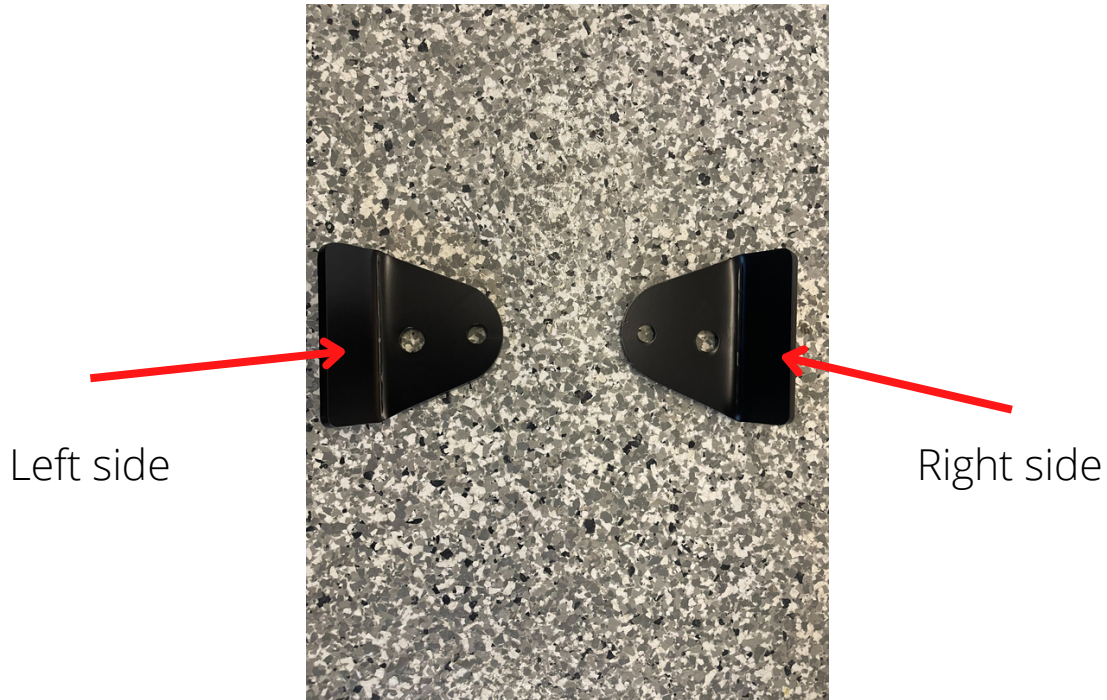
**\*\*\*REPEAT STEPS 1-5 FOR OTHER REAR BRACKET\*\*\***



# FRONT BRACKETS

1

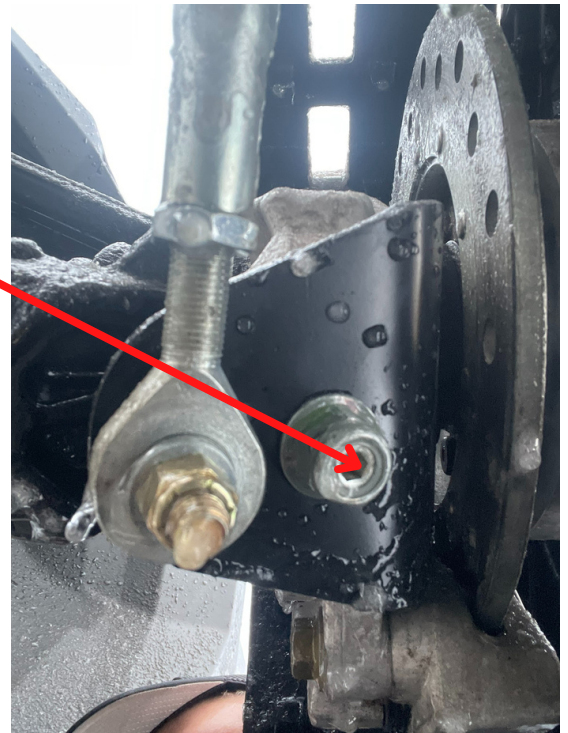
Start by setting out front brackets. They are side specific. Bolt holes are slightly offset forward for heim joint clearance.



2

Ensure tire and wheel are removed. Once tire and wheel are off, remove bottom ball joint nut as indicated by red arrow.

Put bracket in place. There will be a washer that comes off when you remove ball joint nut. You can put that in between bracket and A arm if it allows bracket to sit flush against bottom of A arm. But if it doesn't sit perfectly flush, do not use washer as it will not allow threads to reach the nylon on the nut when reinstalling.



This photo depicts bracket fully installed with heim joint hooked up.

**3**

Once the bracket is securely mounted to the bottom of spindle, bolt on the track and hook up the anti-rotation arm to the bracket.

Adjust the heim joint, using "Camso's specs for track positioning" to adjust the angle of attack.

Picture below demonstrates bracket fully installed, heim joint hooked up, as well bracket sitting flush on bottom of spindle.



**\*\*\*REPEAT STEPS 1-3 FOR OTHER FRONT BRACKET\*\*\***

\*\*\*\*\*Note: If you're wanting to re-install mud scraper when going back to tires, you'll need to drill out mud scraper bolt hole on the side of mud scraper that is aligned with the bracket hole and continue using 3/8-inch bolt to mount mud scraper to trailing arm.

Factory bolts can be used for other remaining mud scraper bolt holes.

## **FINAL STEP:**

Turn that key and go have some fun! We'll see you at the top!

# **\*\*\*IMPORTANT**

Be sure to check all bolts used to install brackets and heim joints for the first few rides to ensure they remain in place.

Due to the weight and vibration of having the tracks on your machine, there may be some settling and movement of hardware.

As a safety measure, it's always good practice to check your machine and all bolts before every ride.