



High Performance Antimicrobial Flooring Solutions for:

- ✓ Food & Beverage
- ✓ Bottling Facilities
- ✓ Meat & Seafood
- ✓ Pharmaceutical
- ✓ Healthcare
- ✓ Food Preparation



flowcreteamerica.com

Flowfresh Systems

Key Resin Company delivers industry experience and quality seamless resin flooring systems for application in both industrial and commercial environments.

Flowfresh provides much more than a surface to walk on, offering a number of performance advantages. Clients choose Flowfresh products for their anti-microbial, chemical resistant, slip resistant, temperature resistant, and vapor permeable properties.

Key Resin Company manufactures Flowfresh products in Batavia, Ohio and proudly serves expanding business opportunities across the continent including the USA, Canada, Latin America and the Caribbean. We've provided flooring solutions for clients including Coca Cola, L'Oreal, Cargil, Nestle, NASA, GE and Southwest Airlines. Key Resin Company continues to develop a significant presence in the polymer flooring market with innovative, sustainable solutions for a more positive impact on the construction industry.

HACCP International Certified Hygienic Flooring



Flowfresh is a line of HACCP International certified, antimicrobial treated cementitious urethane flooring designed predominantly for use in hygiene industries.

Containing a silver-ion based antimicrobial additive, Polygiene®, Flowfresh systems complement floor cleaning and hygiene practices between wash cycles by protecting the surface from degradation caused by microbial growth.

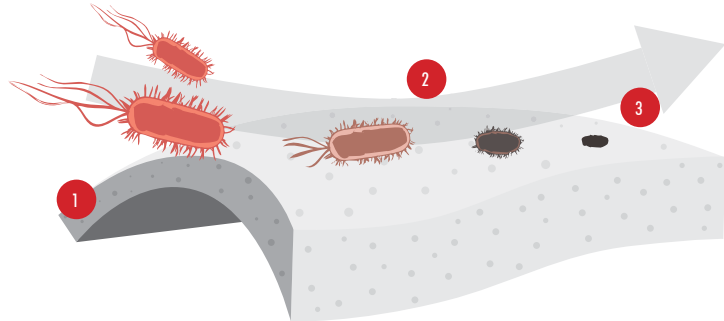
Silver is a natural element known for its ability to purify and protect from bacterial infections – and provides an environmentally friendly alternative to chemically manufactured antimicrobials.

This technology remains active for the lifetime of the floor - even when damaged or worn - unlike traditional coatings or surface treatments.

Polygiene®: How Does It Work?

Polygiene® is a natural silver-ion antimicrobial that is homogeneously distributed throughout the Flowfresh cementitious urethane material.

Polygiene® is not a substitute for cleaning, but should be regarded as a complement to regular hygiene and sanitization practices.



- 1 The silver ions are homogeneously distributed throughout the floor.
- 2 The silver ions migrate to the surface.
- 3 They protect the surface from degradation caused by microbial growth.

Flowfresh Application Suitability



Food & Beverage



Meat, Poultry & Seafood



Bottling Plants & Brewhouses



Food Preparation



Healthcare Environments



Pharmaceutical & Laboratories

Resistance Chart

BACTERIAL RESISTANCE				CHEMICAL RESISTANCE*			
SARS-CoV	✓	Salmonella Typhi	✓	Hydrochloric Acid 10%	✓	Methanol	✓
MRSA	✓	Enterococcus Faecalis	✓	Sulphuric Acid 10%	✓	Sugar Syrups	✓
E-coli	✓	Staphylococcus Aureus	✓	Citric Acid 10%	✓	Caustic Soda	✓
Listeria	✓	Streptococcus Pyogenes	✓	Acetic Acid 5%	✓	Petrol	✓
C.difficile	✓	Pseudomonas Aeruginosa	✓	Lactic Acid 10%	✓	Oil Ingredients	✓
Proteus Vulgaris	✓	Campila Bacta	✓	Phosphoric Acid 5%	✓	Detergents	✓

*A chemical resistance chart is available on request.



Application Suitability

Dry Process (Medium to Heavy Traffic)	
Wet Process (Medium to Heavy Traffic)	✓
Industrial Kitchens / Wash Areas	✓
Packaging Areas	
Chemical / Solvent Stores	✓
Loading Bays	
Laboratories / Quality Control	✓
Dispensaries	✓
Cold Rooms / Freezers	

Flowfresh HF & RT (1/4" - 3/8")

Rake or trowel-applied, heavy-duty and HACCP International certified antimicrobial treated cementitious urethane mortar.

Flowfresh HF & RT provide a durable, anti-slip finish, which is resistant to thermal shock, steam cleaning and moisture vapor transmission.



Polygiene®:

Contains a silver ion antimicrobial additive to protect the surface.



Chemical Resistant:

Protects against food by-products, fats, hot oils, blood, sugar and acids.



Slip Resistant:

Positively textured profile to minimize slip risks in wet or damp areas.



Temperature Resistant:

Resistant to temperatures of up to 250°F and suitable for steam cleaning.



Unaffected by MVT:

Allows moisture to move through the material at a safe rate.

Standard Colors:



Cream



Tan



Khaki



Red



Green



Blue



Grey



Dark Grey



Black



Safety Yellow

The applied colors may differ from the examples shown.
For a full color chart and samples, contact your local Key Resin Company office.

Technical Profile

COVERAGE RATES: (HF: 66 LB UNIT RT: 55 LB UNIT)

HF: 24 sq ft/unit at 1/4" or 17 sq ft/unit at 3/8"
RT: 21 sq ft/unit at 1/4" or 14 sq ft/unit at 3/8"

COMPRESSIVE STRENGTH:

ASTM C 579 8,000 psi

TENSILE STRENGTH:

ASTM C 307 1,450 psi

COEFFICIENT OF THERMAL EXPANSION:

ASTM C 531 1.1×10^{-5} in/in/°F

FLEXURAL STRENGTH:

ASTM C 580 2,900 psi

ABRASION RESISTANCE:

ASTM D 4060 HF: 0.05g loss
CS 17 Wheel, 1000 cycles RT: 0.07g loss

ADHESION:

ASTM D 4541 400 psi
(100% concrete failure)

COEFFICIENT OF FRICTION:

ASTM D 2047 Exceeds ADA
recommendations

TEMPERATURE RESISTANCE:

Continuous Exposure: 220°F

Intermittent Spills: 250°F

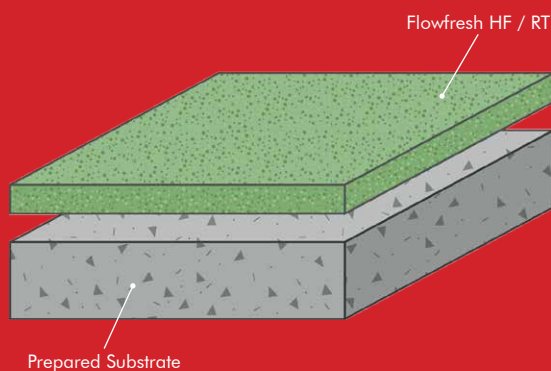
VOC: HF: 5 g/l | RT: 6 g/l

SPEED OF CURE: 50°F 70°F 90°F

Light Traffic 12-14 hrs 6-8 hrs 3-5 hrs

Full Traffic 24-36 hrs 12-16 hrs 8-10 hrs

Full Chemical Cure 5-7 days 3-5 days 1-2 days



flowcreteamerica.com

Flowfresh SR & SRQ (1/4" - 5/16")

Slurry-broadcast and HACCP International certified antimicrobial treated cementitious urethane floor systems.

Flowfresh SR & SRQ (quartz) provide a positively textured, hardwearing and vibrantly colored floor finish, which is resistant to thermal shock and moisture vapor transmission.



Polygiene®:

Contains a silver ion antimicrobial additive to protect the surface.



Slip Resistant:

Positively textured profile to minimize slip risks in wet or damp areas.



Temperature Resistant:

Resistant to temperatures of up to 250°F and suitable for steam cleaning.



Unaffected by MVT:

Allows moisture to move through the material at a safe rate.

Flowfresh SR Standard Colors:



Flowfresh SRQ Standard Colors:



The applied colors may differ from the examples shown.
For a full color chart and samples, contact your local Key Resin Company office.

Technical Profile

COVERAGE RATES: (47 LB UNIT)

24 sq ft/unit at 3/16" (yielding 1/4" finished floor)
18 sq ft/unit at 1/4" (yielding 5/16" finished floor)

COMPRESSIVE STRENGTH:

ASTM C 579 8,128 psi

TENSILE STRENGTH:

ASTM C 307 1,450 psi

COEFFICIENT OF THERMAL EXPANSION:

ASTM C 531 1.5×10^{-5} in/in/°F

FLEXURAL STRENGTH:

ASTM C 580 2,900 psi

ABRASION RESISTANCE:

ASTM D 4060
CS 17 Wheel, 1000 cycles 0.05g loss

ADHESION:

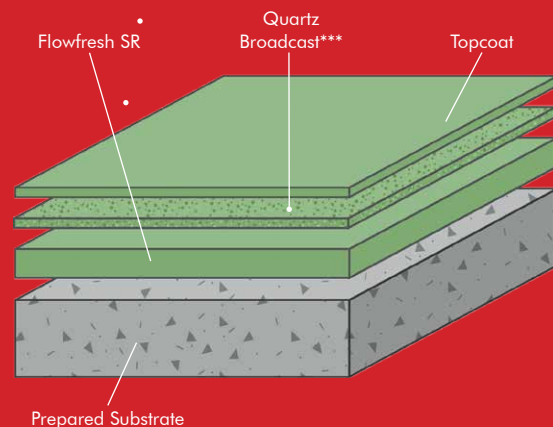
ASTM D 4541 400 psi
(100% concrete failure)

COEFFICIENT OF FRICTION:

ASTM D 2047 Exceeds ADA
recommendations

TEMPERATURE RESISTANCE:*

	SR*	SRQ**	
Continuous Exposure:	200°F	180°F	
Intermittent Spills:	250°F	210°F	
VOC:	7 g/l		
SPEED OF CURE:	50°F	70°F	90°F
Light Traffic	12-14 hrs	6-8 hrs	3-5 hrs
Full Traffic	24-36 hrs	12-16 hrs	8-10 hrs
Full Chemical Cure	5-7 days	3-5 days	1-2 days



*Temperature resistance values shown apply when using Flowfresh FC as the topcoat.
**Temperature resistance values shown apply when using Flowcoat CR as the topcoat.
***Light colored quartz may require an additional broadcast. Consult your sales representative.

flowcreteamerica.com

Flowfresh MF (3/16" - 1/4")

A self-leveling, HACCP International certified, smooth, matte antimicrobial treated cementitious urethane floor system.

Flowfresh MF provides a vibrantly colored, easy clean floor finish, which is suited to use in medium duty dry-service zones including packaging areas.



Polygiene®:

Contains a silver ion antimicrobial additive to protect the surface.



Easily Cleaned:

Minimal surface joints ensure the floor is easy to clean and sanitize.



Chemical Resistant:

Protects against food by-products, fats, hot oils, blood, sugar and acids.



MVT Resistant:

Resistant to 12 lbs of moisture vapor (12 lbs / 1,000 sq ft / 24 hrs).



Low Odor:

Low odor installation, non-toxic, and phthalate-free formulation.

Standard Colors:



Cream



Tan



Khaki



Red



Green



Blue



Grey



Dark Grey



Black



Safety Yellow

The applied colors may differ from the examples shown.
For a full color chart and samples, contact your local Key Resin Company office.

Technical Profile

COVERAGE RATES: (40 LB UNIT)

22 sq ft/unit at 3/16"
17 sq ft/unit at 1/4"

COMPRESSIVE STRENGTH:

ASTM C 579 >7,250 psi

TENSILE STRENGTH:

ASTM C 307 1,740 psi

COEFFICIENT OF THERMAL EXPANSION:

ASTM C 531 2.2×10^{-5} in/in/°F

FLEXURAL STRENGTH:

ASTM C 580 2,900 psi

ABRASION RESISTANCE:

ASTM D 4060
CS 17 Wheel, 1000 cycles 0.07g loss

ADHESION:

ASTM D 4541 400 psi
(100% concrete failure)

COEFFICIENT OF FRICTION:

ASTM D 2047 Exceeds ADA
recommendations

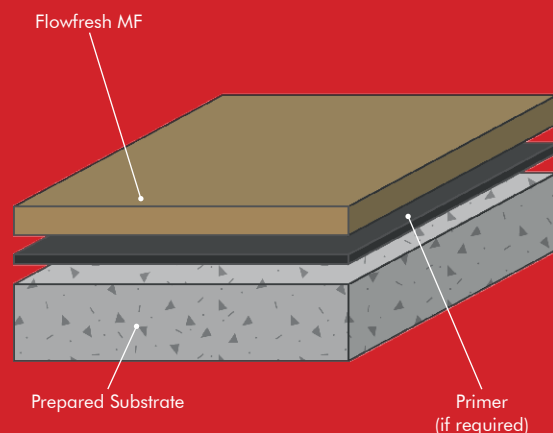
TEMPERATURE RESISTANCE:

Continuous Exposure: 180°F

Intermittent Spills: 200°F

VOC: 7 g/l

SPEED OF CURE:	50°F	70°F	90°F
Light Traffic	12-14 hrs	6-8 hrs	3-5 hrs
Full Traffic	24-36 hrs	12-16 hrs	8-10 hrs
Full Chemical Cure	5-7 days	3-5 days	1-2 days



flowcreteamerica.com

Flowfresh SL (1/8" - 3/16")

A slurry-broadcast, cost effective and HACCP International certified antimicrobial treated cementitious urethane floor system.

Flowfresh SL provides an excellent alternative to traditional epoxy floor screeds with enhanced durability and anti-slip properties.



Polygiene®:

Contains a silver ion antimicrobial additive to protect the surface.



Decorative:

Available in a wide-range of decorative patterns and finishes.



Lifecycle Cost Efficiencies:

Offers significant lifecycle cost savings compared to tile or acid brick.



MVT Resistant:

Resistant to 12 lbs of moisture vapor (12 lbs / 1,000 sq ft / 24 hrs).



Low Odor:

Low odor installation, non-toxic, and phthalate-free formulation.

Standard Colors:



Cream



Tan



Khaki



Red



Green



Blue



Grey



Dark Grey



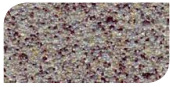
Black



Safety Yellow



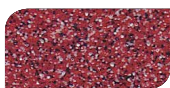
Gray Mist



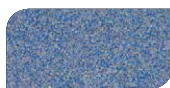
Rococo



Spring Glen



Kitchen Red



Blueberry Ice

Technical Profile

COVERAGE RATES: (61 LB UNIT)

94 sq ft/unit at 3/32" (yielding 1/8" finished floor)
63 sq ft/unit at 1/8" (yielding 3/16" finished floor)

COMPRESSIVE STRENGTH:

ASTM C 579 >7,250 psi

TENSILE STRENGTH:

ASTM C 307 1,740 psi

COEFFICIENT OF THERMAL EXPANSION:

ASTM C 531 2.7×10^{-5} in/in/°F

FLEXURAL STRENGTH:

ASTM C 580 2,900 psi

ABRASION RESISTANCE:

ASTM D 4060
CS 17 Wheel, 1000 cycles 0.05g loss

ADHESION:

ASTM D 4541 400 psi
(100% concrete failure)

COEFFICIENT OF FRICTION:

ASTM D 2047 Exceeds ADA
recommendations

TEMPERATURE RESISTANCE:*

Continuous Exposure: 180°F

Intermittent Spills: 220°F

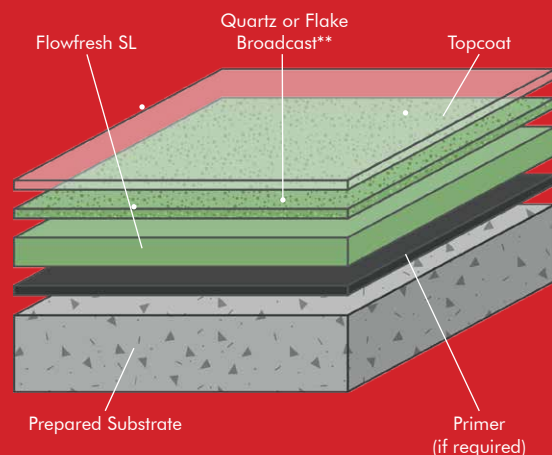
VOC: 9 g/l

SPEED OF CURE: 50°F 70°F 90°F

Light Traffic 12-14 hrs 6-8 hrs 3-5 hrs

Full Traffic 24-36 hrs 12-16 hrs 8-10 hrs

Full Chemical Cure 5-7 days 3-5 days 1-2 days



The applied colors may differ from the examples shown.
For a full color chart and samples, contact your local Key Resin Company office.

*Temperature resistance values shown apply when using Flowfresh FC as the topcoat.
**Light colored quartz may require an additional broadcast. Consult your sales representative.

Flowfresh Cove (1/8" - 3/16")

A trowel-applied, chemical resistant and HACCP International certified antimicrobial treated cementitious urethane cove mortar.

Flowfresh Cove provides a hardwearing cove base, which ensures a seamless, hygienic transition between the floor and wall.



Polygiene®:

Contains a silver ion antimicrobial additive to protect the surface.



Chemical Resistant:

Protects against food by-products, fats, hot oils, blood, sugar and acids.



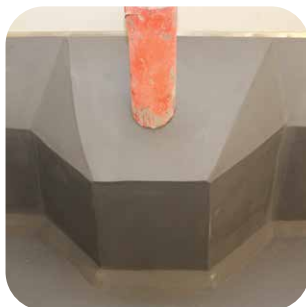
Lifecycle Cost Efficiencies:

Offers significant lifecycle cost savings compared to tile or acid brick.



Easily Maintained:

Can be patch-repaired in position to minimize renovation costs.



Technical Profile

COVERAGE RATES: (32 LB UNIT)

16 sq ft/unit or 48 linear ft/unit at 4" high at 1/8"
11 sq ft/unit or 33 linear ft/unit at 4" high at 3/16"

COMPRESSIVE STRENGTH:

ASTM C 579 8,000 psi

TENSILE STRENGTH:

ASTM C 307 1,450 psi

COEFFICIENT OF THERMAL EXPANSION:

ASTM C531 1.1×10^{-5} in/in/°F

FLEXURAL STRENGTH:

ASTM C 580 2,900 psi

ABRASION RESISTANCE:

ASTM D 4060
CS 17 Wheel, 1000 Cycles 0.079g loss

ADHESION:

ASTM D 4541 400 psi
(100% concrete failure)

TEMPERATURE RESISTANCE:

Continuous Exposure: 220°F

Intermittent Spills: 250°F

VOC: 5 g/l

Standard Colors:



Cream



Tan



Khaki



Red



Green



Blue



Grey



Dark Grey



Black



Safety Yellow

The applied colors may differ from the examples shown.
General wear on Safety Yellow may be more visible.
For a full color chart and samples, contact your local Key Resin Company office.



Standard Colors:



Cream



Tan



Khaki



Red



Green



Blue



Grey



Dark Grey



Black



Safety Yellow

The applied colors may differ from the examples shown.
General wear on Safety Yellow may be more visible.
For a full color chart and samples, contact your local Key Resin Company office.

Flowfresh IF (3/8" - 1/2")

An exceptionally heavy duty, trowel applied and HACCP International certified iron filled cementitious urethane mortar.

Flowfresh IF provides a durable and finely textured floor finish, which is resistant to heavy impact, thermal shock and moisture vapor transmission.



Polygiene®:

Contains a silver ion antimicrobial additive to protect the surface.



Slip Resistant:

Positively textured profile to minimize slip risks in wet or damp areas.



Temperature Resistant:

Resistant to temperatures of up to 250°F and suitable for steam cleaning.



Chemical Resistant:

Protects against food by-products, fats, hot oils, blood, sugar and acids.

Technical Profile

COVERAGE RATES: (62 LB UNIT)

14 sq ft/unit at 3/8"
10 sq ft/unit at 1/2"

COMPRESSIVE STRENGTH:

ASTM C 579 8,000 psi

TENSILE STRENGTH:

ASTM C 307 1,450 psi

COEFFICIENT OF THERMAL EXPANSION:

ASTM C531 1.1×10^{-5} in/in/°F

FLEXURAL STRENGTH:

ASTM C 580 2,900 psi

ABRASION RESISTANCE:

ASTM D 4060
CS 17 Wheel, 1000 Cycles 0.05g loss

ADHESION:

ASTM D 4541 400 psi
(100% concrete failure)

TEMPERATURE RESISTANCE:

Continuous Exposure: 220°F

Intermittent Spills: 250°F

VOC: 5 g/l

Flowfresh Ultra Flakes

(3/16"-1/4")

A hybrid flooring system combining antimicrobial treated cementitious urethane with a polyurea finish.

Flowfresh Ultra Flakes provides a decorative, colorful and UV-resistant finish with an enhanced speed of cure to ensure a fast return to service.



Polygiene®:

Contains a silver ion antimicrobial additive to protect the surface.



Decorative:

Available in a wide-range of decorative patterns and finishes.



Easily Cleaned:

Minimal surface joints ensure the floor is easy to clean and sanitize.



Lifecycle Cost Efficiencies:

Offers significant lifecycle cost savings over tile or acid brick finishes.



Low Odor:

Low odor installation, non-toxic, and phthalate-free formulation.

Standard Colors:



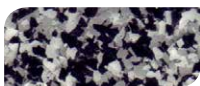
Scarlet



Cobblestone



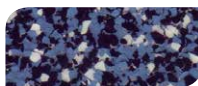
Quicksilver



Domino



Ice Blue



Midnight



Green Bay



Desert Tan

Technical Profile

COVERAGE RATES: (40 LB UNIT)

22 sq ft/unit at 3/16"
17 sq ft/unit at 1/4"

COMPRESSIVE STRENGTH:

ASTM C 579 >7,250 psi

TENSILE STRENGTH:

ASTM C 307 1,450 psi

COEFFICIENT OF THERMAL EXPANSION:

ASTM C531 2.7×10^{-5} in/in/°F

FLEXURAL STRENGTH:

ASTM C 580 2,900 psi

ABRASION RESISTANCE:

ASTM D 4060
CS 17 Wheel, 1000 Cycles 0.05g loss

ADHESION:

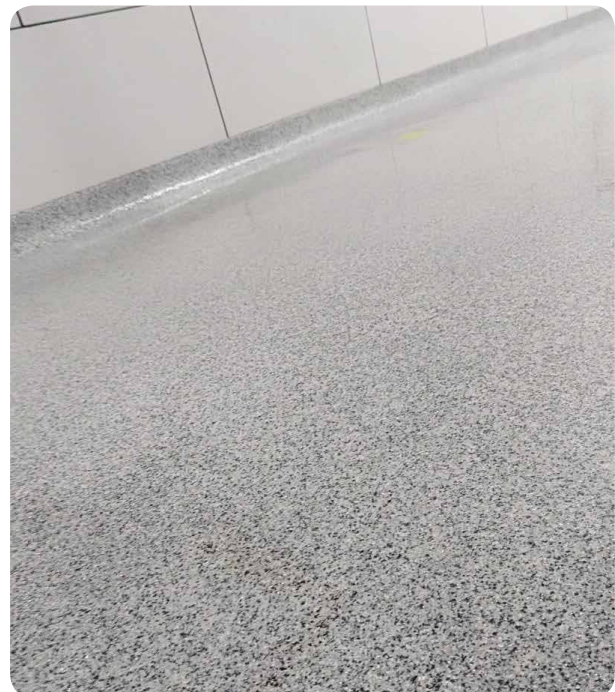
ASTM D 4541 400 psi
(100% concrete failure)

TEMPERATURE RESISTANCE:

Continuous Exposure: 165°F

Intermittent Spills: 200°F

VOC: 6 g/l



Flowfresh FC (1/4" - 3/8")

A pigmented, high performance, antimicrobial treated cementitious urethane floor sealer with a matte appearance. Applied as a lock coat sealer to any Flowfresh cement overlays that can be fully broadcast with aggregate.

Standard Colors:



TEMPERATURE RESISTANCE:

Continuous Exposure:	220°F
Intermittent Spills:	250°F

COEFFICIENT OF THERMAL EXPANSION:

ASTM C 531	1.1×10^{-5} in/in/°F
------------	-------------------------------

ABRASION RESISTANCE:

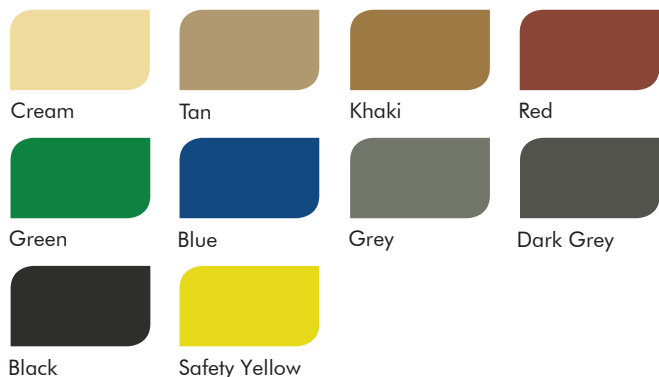
ASTM D 4060, CS17 Wheel, 1,000 Cycles	0.05 g loss
--	-------------

*General wear on Safety Yellow may be more visible.

Flowfresh FCUV (1/4" - 3/8")

A pigmented, high performance, UV stable, semi-gloss, antimicrobial treated cementitious urethane floor sealer. Applied as a lock coat sealer to any Flowfresh cement overlays that can be fully broadcast with aggregate.

Standard Colors:



TEMPERATURE RESISTANCE:

Continuous Exposure:	200°F
Intermittent Spills:	250°F

COEFFICIENT OF THERMAL EXPANSION:

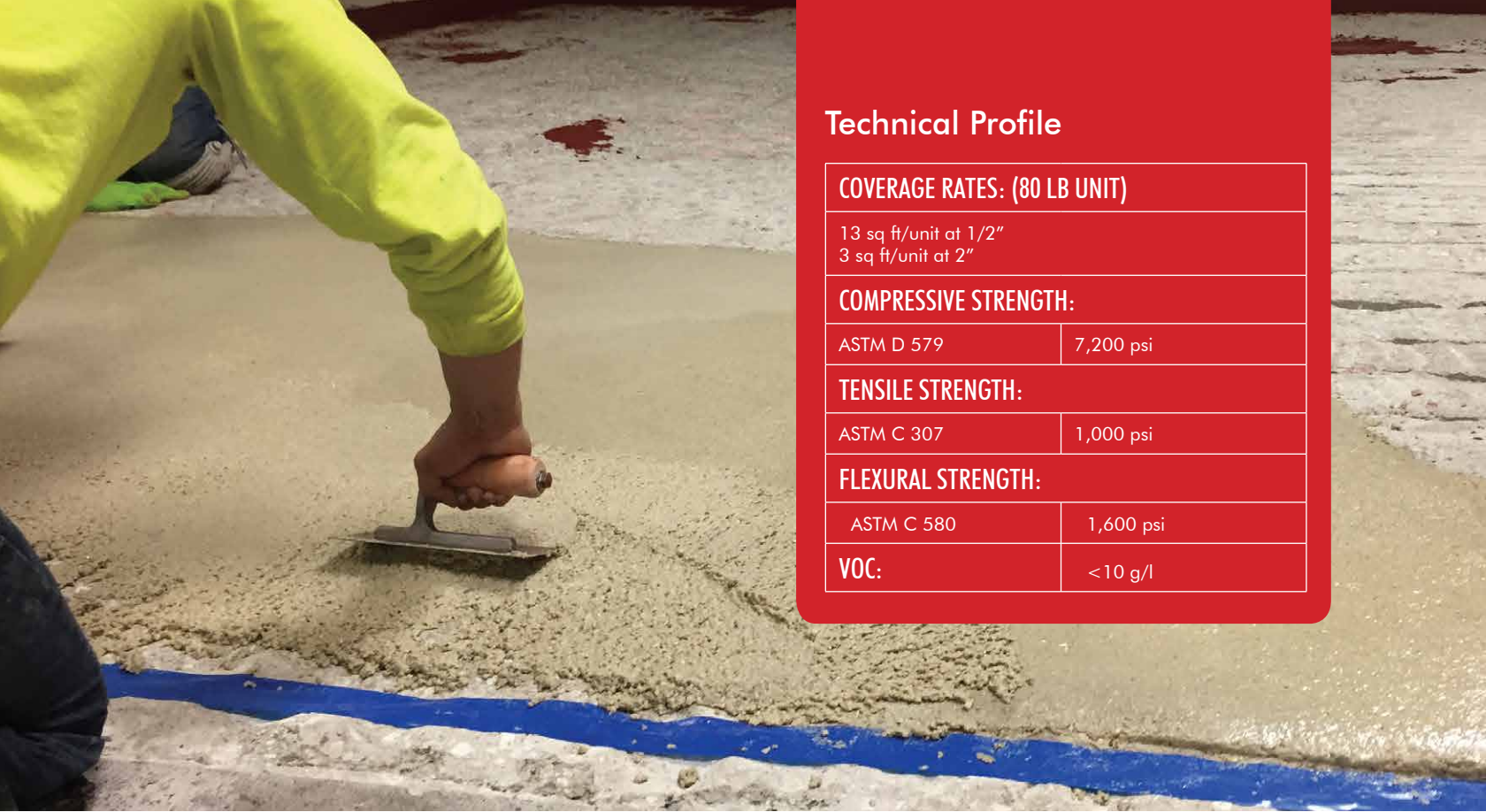
ASTM C 531	1.5×10^{-5} in/in/°F
------------	-------------------------------

ABRASION RESISTANCE:

ASTM D 4060, CS17 Wheel, 1,000 Cycles	0.05 g loss
--	-------------

*General wear on Safety Yellow may be more visible.

The applied colors may differ from the examples shown. For a full technical profile, color chart and samples, contact your local Key Resin Company office.



Technical Profile

COVERAGE RATES: (80 LB UNIT)	
13 sq ft/unit at 1/2"	
3 sq ft/unit at 2"	
COMPRESSIVE STRENGTH:	
ASTM D 579	7,200 psi
TENSILE STRENGTH:	
ASTM C 307	1,000 psi
FLEXURAL STRENGTH:	
ASTM C 580	1,600 psi
VOC:	<10 g/l

Flowfresh Flowfill (1/2"- 2")

Flowfill Rapid setting urethane underlayment mortar. Applied by trowel or screed bar from 1/2" to 2".

Fast and efficient repair for damaged floor slabs. Also creates sloping on a floor where time doesn't allow the use of normal concrete or polymer floor mortars.



Polygiene®:

Contains a silver ion antimicrobial additive to protect the surface.



Unaffected by MVT:

Allows moisture to move through the material at a safe rate.



Temperature Resistant:

Resistant to temperatures of up to 250°F and suitable for steam cleaning.



Chemical Resistant:

Protects against food by-products, fats, hot oils, blood, sugar and acids.

Damaged/Untreated Concrete Floors



After Flowfill & Flowfresh Applications



The applied colors may differ from the examples shown.
For a full color chart and samples, contact your local Key Resin Company office.

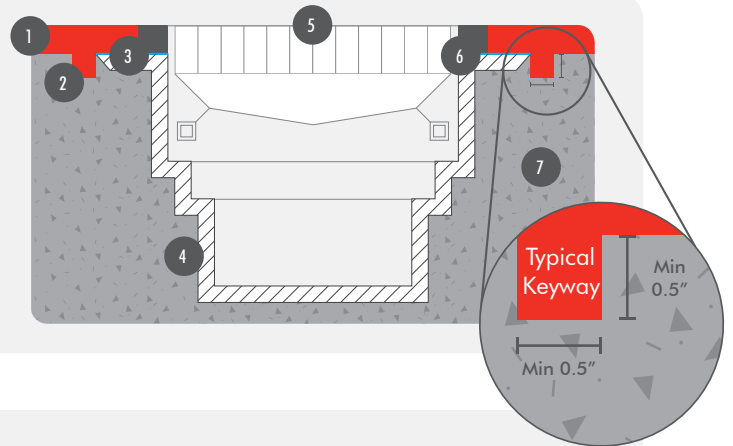
Complementary Products

	DESCRIPTION:	USES:
Flowfill	A rapid setting urethane cement underlayment mortar. Applied by trowel or screed bar from 1/2" to 3".	Used as a fast and efficient repair for damaged floor slabs. Also creates sloping on a floor where time doesn't allow the use of normal concrete or polymer floor mortars.
Flowprime	A 2-component, low viscosity, 100% solids, epoxy primer for cementitious substrates.	Used for priming of concrete, prior to overcoating industrial and commercial resin floor finishes.
Peran TCW	A 2-component, multi-purpose, 100% solids thixotropic epoxy resin system.	Used as a thixotropic vertical primer, grout coat, binder and sealer coat for cove base.
Flowfresh FC	A cementitious urethane floor coating, designed to complement the Flowfresh antimicrobial flooring system.	Used to coat cementitious urethane floors to enhance slip resistance, while retaining chemical resistance and durability.
Flowfresh FCUV	High performance, UV stable, semi-gloss, cementitious urethane floor sealer.	Used as a UV stable sealer, which is applied as a finish to Flowfresh flooring systems.
Flowfresh SR Sealer	A 100% solids, solvent-free, semi-flexible, pigmented, cementitious urethane sealer for broadcast systems.	Used as a lock coat for Flowfresh SR or SL systems.
Flowcoat CR	A 100% solids, high performance, high chemical resistant epoxy coating.	Used as a topcoat for chemical resistant flooring applications.
Flowseal Ultra	A 2-component, very fast cure, gloss, UV stable, chemical resistant, polyurea coating.	Used as a fast curing UV stable sealer or receiving coat for flake and quartz broadcast systems.
Peran STC	A 100% solids, low viscosity, crystal clear epoxy resin binder and sealer that provides improved clarity and increased UV stability as compared to conventional epoxy coatings.	Used as a finish coat for color quartz aggregates or decorative flakes.
Flowflex UVR	A UV resistant, 100% solids, two component, heavy duty, semi-rigid polyurea joint sealant for industrial and commercial floors.	Used to fill construction joints to protect joint edges from spalling and to seal open joints. It creates a longer lasting floor, reducing the areas where bacteria can hide and grow.

Typical Construction Joints

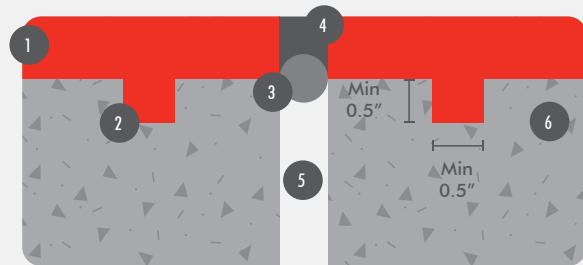
Typical Termination at Steel Floor Drain Cross Section:

- | | |
|---------------------|----------------------|
| 1 Flowfresh System | 5 Drain Cover |
| 2 Typical Keyway | 6 Joint Sealant |
| 3 Bond Breaker Tape | 7 Existing Substrate |
| 4 Steel Drain Liner | |



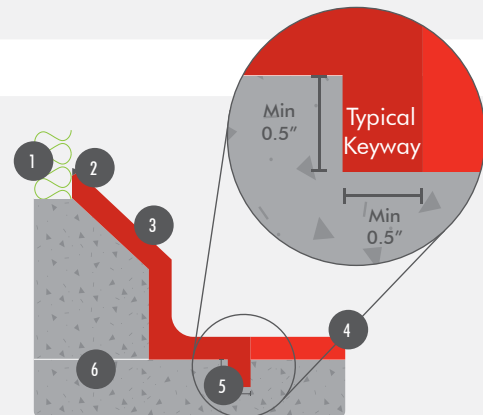
Typical Expansion Joint:

- | | |
|--------------------|----------------------|
| 1 Flowfresh System | 5 Expansion Joint |
| 2 Typical Keyway | 6 Existing Substrate |
| 3 Backer Rod | |
| 4 Joint Sealant | |



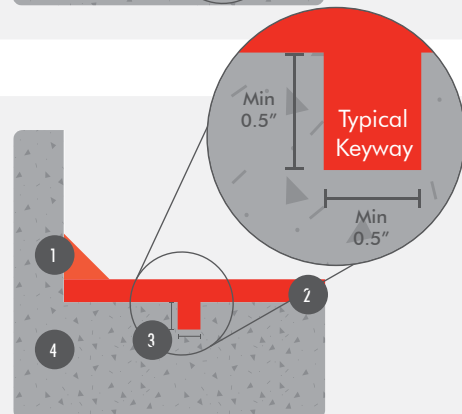
Typical Bottle Cove to Curb:

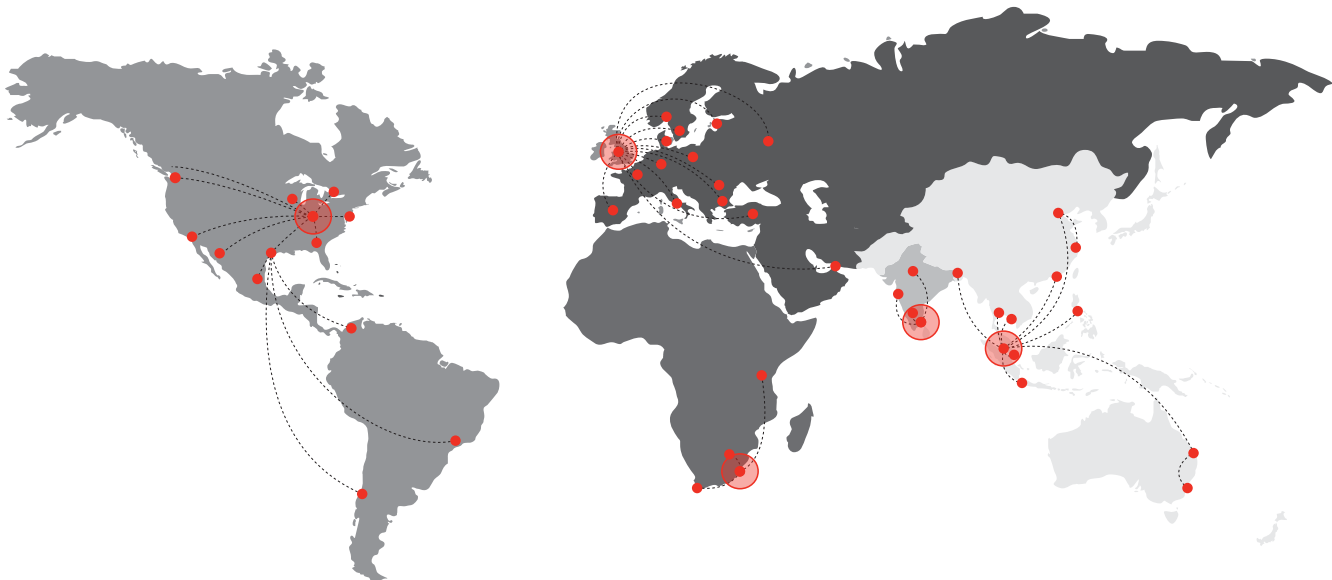
- | | |
|-----------------------|----------------------|
| 1 Insulation Panel | 5 Typical Keyway |
| 2 Sealant | 6 Existing Substrate |
| 3 Flowfresh CM (curb) | |
| 4 Flowfresh System | |



Typical 2" Cant Cove:

- | |
|-----------------------|
| 1 Flowfresh CM (curb) |
| 2 Flowfresh System |
| 3 Typical Keyway |
| 4 Existing Substrate |





Key Resin Company

Flowfresh, manufactured by Key Resin, is a leading system in the seamless resin flooring industry suitable for industrial and commercial environments. Contact a local Key Resin Company representative for details.

Europe & Middle East

Baltic States	+48 883 303 880	latvia@flowcrete.com
Bulgaria	+359 898 61 58 31	bulgaria@flowcrete.com
Denmark	+46 435 40 01 10	denmark@flowcrete.com
France	+33 1 60 61 74 42	france@flowcrete.com
Germany	+49 6119 016645	germany@flowcrete.com
Italy	+39 339 4853258	italy@flowcrete.com
Norway	+47 64 86 08 30	norway@flowcrete.com
Poland	+48 22 879 89 07	poland@flowcrete.com
Romania	+40 766 596 991	romania@flowcrete.com
Russia	+7 495 645 83 18	rus@flowcrete.com
Spain	+34 937 07 0872	spain@flowcrete.com
Sweden	+46 435 40 01 10	sweden@flowcrete.com
Turkey	+90 532 416 66 52	turkey@flowcrete.com
UAE	+971 4 886 4728	uae@flowcrete.com
UK	+44 1270 753 000	uk@flowcrete.com

Africa

East Africa	+254 20 682 1011	eastafrika@flowcrete.com
South Africa	+27 31 461 3411	southafrica@flowcrete.com

India

India	+91 44 4202 9831	india@flowcrete.com
-------	------------------	---------------------

Asia Pacific

Australia	+61 7 3205 7115	australia@flowcrete.com
Bangladesh	+88 02 9857222	bangladesh@flowcrete.com
China	+86 10 8472 1912	china@flowcrete.com
Hong Kong	+852 2795 0478	hongkong@flowcrete.com
Indonesia	+62 21 252 3201	indonesia@flowcrete.com
Malaysia	+60 3 6277 9575	malaysia@flowcrete.com
Philippines	+63 917 514 2696	philippines@flowcrete.com
Singapore	+65 6848 7166	singapore@flowcrete.com
Thailand	+66 2539 3424	thailand@flowcrete.com
Vietnam	+84 8 6287 0846	vietnam@flowcrete.com

North & South America

Brazil	+55 11 3230 1107	brazil@flowcrete.com
Canada	+1 604 628 1782	canada@flowcrete.com
Chile	+56 2 2938 1962	chile@flowcrete.com
Colombia	+57 1 381 9254	colombia@flowcrete.com
Mexico	+01 800 099 0468	mexico@flowcrete.com
USA	+1 (936) 539-6700	sales@keyresin.com

*Whilst every care has been taken to ensure that the information included in this document was accurate at the time of printing, we reserve the right to change product specifications at any time without prior notice. The photographs and colors reproduced in this publication are within the constraints of the printing process and are not to be used for matching purposes. All photographs are used for approximate representation only and may not show the actual products on offer. E&OE.