



E-BIKE USER MANUAL

Attention

Please read this manual carefully before using the Cysum electric bicycle. If you do not understand this manual, or if you do not solve the issues covered in this manual, please contact the seller.



M900



WELCOME TO CYSUM

Thank You For Choosing CysumE-bikes

Welcome to your new cysum E-Bike! You are entering a new world of ease, luxury, and mobility. Whether you're looking for an environmentally friendly alternative to your regular gas-powered vehicle, a fun way to avoid traffic congestion, or simply want to spend more time outdoors, we hope you enjoy your new E-Bike. In a life full of headwinds and tailwinds, it is our honor to be the wind at your back.

If you have questions or comments, please don't hesitate to contact us:

Email: customervic@cysum.com

web: www.cysum.com



VEHICLE IDENTIFICATION NUMBER/ SERIAL NUMBER

-

For Your Records

For future reference, please fill in the important information below. Your serial number can be found on the inward-facing surface of the frame seat stay or on head top tube.

Please retain your sales receipt for any possible warranty or loss claims.

My CysumSerial Number:



Serial Number Here

Serial Number Here

FOR YOUR RECORDS

MYCYSUM E-BIKE

Name

Address

Purchase
Date

Purchase
Channel

Cysum
Website

Amazon

Ebay

Other

Model

Color

Serial#

TABLE OF CONTENTS

—

ABOUT THIS MANUAL	05
IMPORTANT SAFETY INFORMATION	06
OPERATIONAL INSTRUCTIONS	17
ASSEMBLY INSTRUCTIONS	23
RECHARGING THE BATTERY	25
BATTERY AND CHARGER CARE	26
GEARS	27
LCD DISPLAY & KEYS	28
BRAKES	29
TIRES & INNER TUBES TROUBLESHOOTING	30
LANKELEISI E-BIKES FAQs	31
INSPECTION AND MAINTENANCE	33
WARRANTY	35

ABOUT THIS MANUAL

01

—

This manual was written to help you get the most performance, comfort, enjoyment, and safety when riding your new cysum E-Bike. The manual describes specific care and maintenance procedures that help protect your warranty and ensure years of trouble-free use. Please pay particular attention to the section on battery charging and maintenance.

It is important for you to understand your new Cysum

This manual was written to help you get the most performance, comfort, enjoyment, and safety when riding your new Cysum E-Bike. The manual describes specific care and maintenance procedures that help protect your warranty and ensure years of trouble-free use. Please pay particular attention to the section on battery charging and maintenance.

It is important for you to understand your new cysum



IMPORANTANG SAFETY INFORMATION

02

-

Cycling can be a hazardous activity even under the best of circumstances. Proper maintenance of your cysum E-Bike is your responsibility, as it helps reduce the risk of injury. This manual contains many warnings about the consequences of failure to maintain or inspect your

Cysum E-Bike. Improper use could result in serious injury or death. We recommend you use a trusted professional bike technician to assemble your cysum E-Bike.



IMPORTANT SAFETY INFORMATION

-

ALWAYS WEAR A HELMET

/A

Helmets significantly reduce the number and severity of head injuries. Always wear a helmet that complies with your state laws when riding your cysum E-Bike. Check with your local police department for requirements in your community. Make yourself more visible by wearing bright reflective clothing. Keep your reflectors clean and properly aligned. Use head and tail lights in reduced lighting conditions. Wear sturdy shoes and eye protection. Also check your state laws concerning other protective gear that may be required when riding your cysum E-Bike.

RIDE WITHIN YOUR LIMITS

/C

Take it slow until you are familiar with the riding conditions, as traction can be greatly reduced and brakes become less effective. Never ride faster than conditions warrant or beyond your riding abilities. Remember that alcohol, drugs, fatigue, and inattention can significantly reduce your ability to make good judgments and ride safely.

KNOW YOUR CYSUM E-BIKE

/B

Your new cysum E-Bike incorporates many features and functions that you may be unfamiliar with. Read this manual thoroughly to understand how those features enhance your riding pleasure and safety.

KEEP YOUR E-BIKE IN SAFE CONDITION

/D

For your safety and enjoyment, and to ensure a life for your cysum E-Bike, inspect and maintain your E-Bike regularly. Follow the inspection and maintenance guidelines throughout this manual. Check critical safety equipment before each and every ride.

COMPONENT OR CONDITION	INSPECT BEFORE EVERY RIDE	INSPECT PERIODICALLY*	CLEAN AND/OR LUBRICATE	ADJUST / TIGHTEN	REPAIR/REPLACE IF NECESSARY
Tire pressure (55-65 psi)	X			X	
Tire wear/damage	X			X	
Brake pad adjustment	X			X	
Wheel quick release adjustment	X				X
Head and tail lights	X				X
Controls and displays	X				
Seat post quick release adjustment	X			X	
Brake pad wear		X			X
Brake cable tension/wear		X		X	X
Spoke tension		X		X	
Wheel true		X		X	
Hub bearings		X	X	X	
Chain lubrication		X	X		
Derailleur adjustment		X	X		
Reflectors		X			X
Battery and charger		X			X
Headset adjustment		X	X	X	
Bottom bracket adjustment		X	X	X	
All bolts, nuts & mounting hardware		X		X	X

OPERSTIPNAL INSTRUCTIONS

-

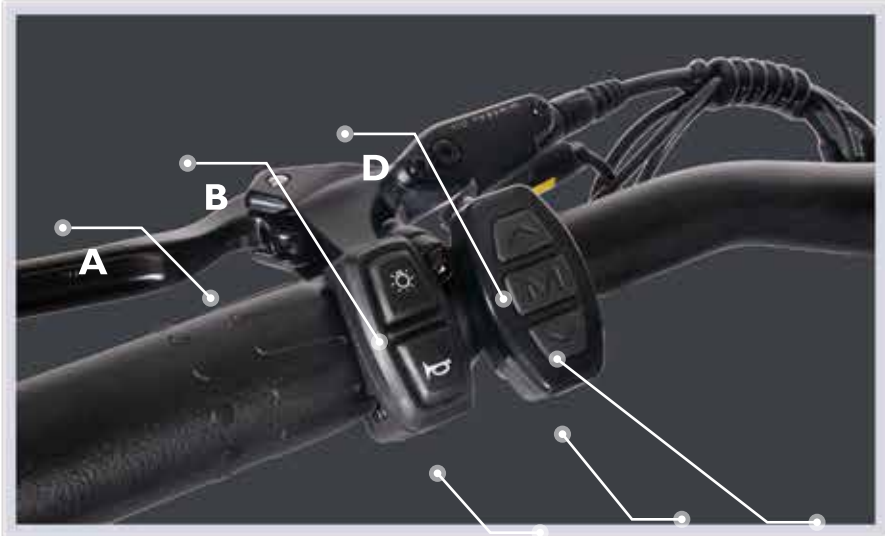
03





LEFT HANDLEBAR

-



Front Brake Lever (behind the handlebar grip in this photo). The front brake is activated by squeezing the left brake lever. This setting may be different from your previous habits, please note

/A

Headlight Button

/B

Horn Button

/C

"UP" Button

/D

DOWN Button

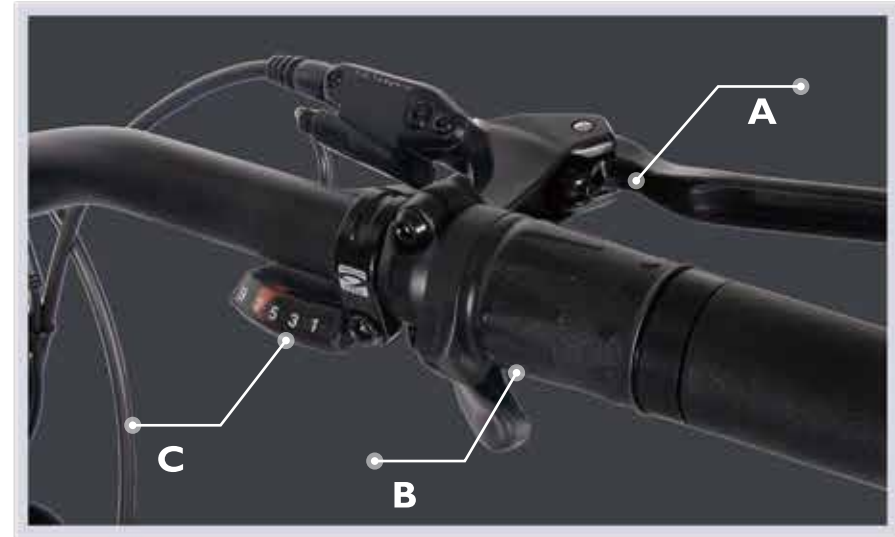
/E

LCD Power Switch

/F

RIGHT HANDLEBAR

-



Rear Brake Lever (Behind The Handlebar Grip In This Photo). The Rear Brake Is Activated By Squeezing The Right Brake Lever. This setting may be different from your previous habits, please note

/A

Twist Throttle - Twist this grip to apply power to the motor.

/B

Rear Derailleur Shifter — by pressing the button while pedaling, you can increase gears from 1 to 9. The shifter is labeled with the corresponding gear selection

/C

COMPONENT INSTALLATION NOTES

04

-



PART ON.1

INSTALLATION OF THE FRONT WHEEL

—



01 Take the E-bike out of the carton and remove all packaging.



02 Install the quick release parts in turn to the front wheel.



03 Insert the quick release lever into the axle center of the front wheel.



04 Install the screws on the quick release lever, one screw on each side.



05 Place the front wheel in the center of the fork.



06 Adjust the front wheel to the center of the fork, and then tighten the nut.

PART ON.2

INSTALL THE HANDLEBAR



Before installing the handlebars, rotate the stem to face straight ahead.



Loosen the screw on the handlebar stem and then rotate it, turn it to the proper position and tighten the screw.



Unscrew the four screws of the stem cover.



Install the handlebar into the stem cover and tighten the four screws. It is recommended to tighten the screws in the order shown in the figure.



Finally, rotate the handlebar and test the flexibility of the handlebar.

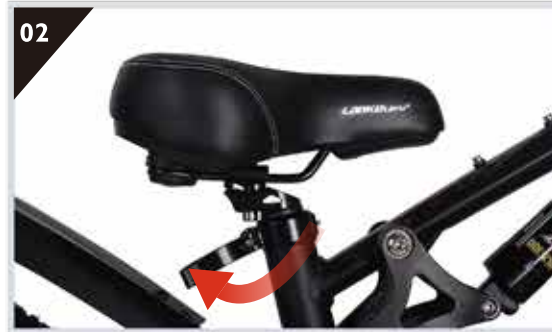
PART ON.3

INSTALL THE SADDLE

—



The seat tube is installed on the frame before leaving the factory.



Open the quick release handle of the seat tube clamp. Adjust the seat tube to a suitable position.



Raise the saddle to a suitable height.



Adjust the screw of the saddle to a suitable position.



Turn the quick release handle to a position that fits the seat tube clamp.

PART ON.4

INSTALL THE PEDAL

—



01 Before installing the pedal, please partition the left pedal and the right pedal



02 “ R” pedal is installed on the right (crankset) side. As shown.



03 The installation direction of the R pedal is clockwise, and tighten it toward the front wheel.



04 “ L” pedal installation is on the left side. As shown.



05 The installation direction of the L pedal is counterclockwise, and tighten it towards the front wheel

PART ON.5

INSTALL HEADLIGHTS AND MUDGUARDS

—



Screws to install the headlights and fenders



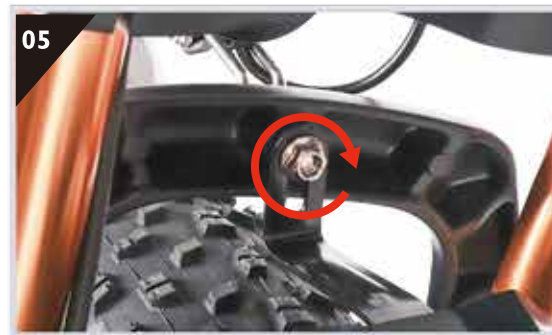
Pass the screw through the front light and fix it to the fork



The picture shows the mudguard



Note that the headlight and the fender share a screw



Pass the mudguard through the screw and fasten it with a nut. Tighten the screws to complete the installation of the fender and headlights

PART ON.6 REMOVE THE BATTERY



Steps to remove the battery.



Insert the battery key into the lock core.



Turn the key to unlock the battery



Push the battery up to remove the battery.



The removed battery can be carried with you, and the battery can be charged at any location.

RECHARGING THE BATTERY

-



A/

Recharge the battery on E-Bike directly



B/

Remove battery from the E-Bike and recharge separately

05



RECHARGING THE BATTERY

-



Attention

Connect the battery first, then connect the power supply and make sure the red LED of the charger is lit. The charger will charge the completed battery within 5 to 7 hours

A red light indicates that the battery is charging. A green light indicates that the battery is fully charged

BATTERY & CHARGER CARE

06

If the battery will not be used for an extended period of time, charge it fully and recharge it every 2 months.

Store in a cool, dry place. Recharge the battery before it becomes completely discharged

Do not use it to power other electrical devices. Improper use of the battery will damage the battery and shorten its useful life and may cause fire or an explosion. If you experience unusual sounds or odors coming from the charger or the battery, unplug charger immediately and contact lankeleisi customer service

Recharge battery after every use.

Do not disassemble or alter the battery or battery charger. Do not place the battery near fire or corrosive substances. Do not allow any liquids on or inside the battery/charger. Do not expose the battery/charger to extreme weather conditions

Do not operate the battery/charger if damaged. Recharge the battery only with a charger specified by the manufacturer.

Do not use the battery/charger for any use other than its intended purpose



GEARS

-

07

Your cysum E-Bike is equipped with multiple speeds. The first gear is for easier and uphill pedaling, and the last gear is for maximum speed on level or downhill terrain. Change gears only while pedaling.

The rear wheel contains seven or nine chain sprockets (depending on model). When the chain is around the largest sprocket, you are in 1st gear, or the lowest gear. The high gear will have the derailleur positioned so that the chain is directed around the smallest gear. Every

position on the gear selector should cause a gear change. Adjustments require fine tuning and should only be made by a qualified technician.

Avoid changing gears very rapidly from first gear to the last gear or vice versa. If you change multiple gears too quickly, you could cause the chain to come off the sprocket.



LCD

-

RIDING MODES

Power Assist System (PAS)

PAS 0: Full electric power, no power assistance

PAS 1: Low speed level, 5-10KM/H

PAS 2: Medium speed level, 15-20KM/H

PAS 3: High speed level, 20-25KM/H

PAS 4: Very high speed level, 25-30KM/H

PAS 5: Maximum speed level, 30-38KM/H

The speeds listed here are only for reference. Actual speeds will be affected by rider weight, temperature, road situations, incline, battery status, etc



08

KEYS

-

Your Cysum electric bike comes with two keys:

- Ignition key*2
- The key to the battery holder on the bicycle frame*2

WARNING

Keep out of reach of children. Our company will not keep spare keys. Please always keep your keys in a safe place to avoid losing.

09

BRAKES

10

It's important to your safety that you instinctively know which brake lever controls which brake. On your cysum E-Bike, the right brake lever controls the rear brake. The left brake lever controls the front brake.

Your cysum E-Bike is equipped with disc brakes for maximum reliability. Applying hand pressure to the brake levers will cause the wheel brake to create friction against the brake disc, slowing the wheel. The more hand pressure applied to the brake lever, the faster the E-Bike will come to a stop.

The rear brake should always be applied before and while the front brake is applied. Applying only the front brake to slow or stop at high speeds may result in the rider being ejected from the saddle and continuing forward over the handlebars. It is best to apply even pressure to both brake levers when slowing or stopping.

Bicycles equipped with disc brakes will occasionally make a slight scraping noise when the wheels are turning without the brakes being applied. This is normal.

Make sure that the brake lever does not contact the handle bar when full hand pressure is applied (Figure 1). If so, then the brakes must be adjusted by increasing the tension on the cable.

A quick adjustment may be made by screwing or unscrewing the threaded barrel adjuster on the brake lever until the brakes are fine-tuned for safe stopping (Figure 2). If the brakes are still not operating correctly, they may require further adjustment by FIGURE 1 an experienced bicycle mechanic.

WARNING

- Disc brake rotors become hot during use. Do not touch or come in contact with the disc rotor shortly
- Wet weather will require a longer distance to stop. Brake earlier and avoid sudden stops when riding in wet conditions.



FIGURE NO.1



FIGURE NO.2

TIRES & INNER TUBES



—

Tires should not be deflated unless necessary. To minimize tire wear and for maximum riding safety, comfort, and handling, maintain recommended tire air pressure. This can be found on the side wall of all tires. Use a reliable

tire air pressure gauge to check for proper inflation before every ride. At the same time, inspect tires for excessive wear and cracks. Replace tires if necessary.

APPEARANCE



—

Periodically clean your e-bike with a damp cloth. Avoid spraying the frame with a water hose to avoid electrical issues. Store your e-bike in a dry, sheltered area away from direct sunlight and wet or damp environments.

It is also recommended to apply chain lube (such as Tri-Flow or ProLink) to the drivetrain of your e-bike when you clean it up or wipe it down to keep it in good running condition.

TROUBLESHOOTING

-



13

If your cysum E-Bike is not working, check the Quick Disconnect fittings to make sure they did not come loose or unplug

Simply unwrap the black spiral wire covering until the Quick Disconnect fitting is exposed, unplug and re- plug the Quick Disconnect fitting(s)

FAQ

CYSUM EBIKE

14

Q

How long does it take to fully charge the battery?

A

It depends on the state of depletion, but around 5-7 hours if completely discharged.

Q

Do I have to pedal an electric bike?

A

No, but it helps to prolong battery life. The motor on our bikes is both throttle and pedal assist controlled, allowing you to decide how much power you desire. Have you ever tried to cycle when speeding downhill on your normal bicycle? It's rust like that. The motor is propelling you faster than you're cycling, so there is pretty much no resistance. It's merely a formality!

Q

Can I ride up hills and against strong headwinds on my cysum electric bike?

A

Yes. One of the main advantages of cycling on a cysum electric bicycle is that it flattens hills and increases your average speed when tackling inclines and headwinds. If you provide a reasonable amount of effort, you should be able to tackle anything from a 10% gradient up to a 14% gradient. You will be amazed at the relative ease with which your new cysum electric bike can tackle some of the most arduous journeys.

Q

What happens when I use the brakes under powered assistance?

A

All of our bikes are equipped with brake levers that have a built-in safety switch that automatically cuts off the motor power under normal braking conditions. This not only ensures a safe unpowered stopping feature, but also protects the motor under braking conditions so that it isn't working against the brakes

Q

How far will a cysum take me?

A

his all depends on a few factors. Cycling with pedal assist along a straight road under normal conditions, the standard battery should last about 35-50 km. Cycling up steep hills will obviously take more energy out of the battery and factors such as road surface, wind resistance, weight of the rider, and tire pressure will affect your range

Q

What happens if I get a flat tire?

A

The tires on our bikes are the same as conventional bicycles. Simply replace the tube with a tube of the right size and inflate it. No special tires or parts will be needed.

Q

How do I know when the battery is low?

A

The bicycles have easily visible indicators located on the right handlebar or LED screen that show the amount of juice left. If it is getting low and you don't think you will make it to your destination, you can switch off your motor and keep it just for the difficult bits.

Q

Do I have to wait for the battery to empty before charge it?

A

No. The batteries we use are Lithium-ion batteries which do not suffer from 'memory effect.' This means that there is no need to discharge a battery completely before you recharge it again. You can partially recharge the battery at any time without reducing its voltage or lifespan. We recommend recharging the battery after every use, regardless of how far you rode.

INSPECTION & MAINTENANCE

15

HAND BRAKE CUT-OFF POWER

When your bike is equipped with brake cut-off power set, the bike will automatically cut off power when the brake is used.

POWER OFF

When your E-Bike is not in use, please turn off the power.

BATTERY CHARGING

Plug in the connector between the charger and the battery, then plug the charger into an electrical outlet. The LED indicator on the charger will show red, which means charging. When the indicator light turns green, the battery is fully charged. When you are finished charging, first unplug the charger from the power supply, and then unplug the connector between the battery and the charger.

During the charging process, the charger and battery should be placed in a stable and cool place. The battery operating temperature range should be between 32 and 110 degrees Fahrenheit.

Do not put any cover on the battery or charger. Make sure that no liquid comes into contact with the charger

LOW VOLTAGE PROTECTION

When the battery output voltage reaches its limit, the electronic control system will cut off the power to automatically protect the battery. When the battery reaches its minimum voltage, you can switch to pedal riding. The battery should be recharged before riding again.

CHARGE INDICATOR

Red indicates charging, green indicates that the battery is full

Note: The battery switch must be turned off using the switch on the bottom when the battery is charging. The battery must be fully charged before the first use. We recommend you charge the battery for a full 6 hours after your first 3 uses. If the bike is not used for a long time, you should fully charge and remove the battery. While not in use, keep the battery turned off and recharge every 2 months.

Make sure to keep the battery and charger away from children during charging

Do not attempt to disassemble or modify the battery or charger

Do not use the battery or charger for any use other than its intended purpose

WARRANTY CERTIFICATE

16

IMPORTANT

CYSUM warranties against manufacturer defects for all of our regular electric bikes and parts except accessories

The warranty period begins on the delivery date within twelve (12) months

Please note this warranty only covers the initial purchaser and DOES NOT cover accessories.

VALIDITY

The warranty is valid only when:

- (a) The Product is purchased from cysum authorized dealers or outlets.
- (b) The Product is NOT transferable to any third party either in ownership or during the period of contract
- (c) The model and serial label should not be defaced or removed from the Product.

EXCLUSION

The warranty is not applicable to:

- (a) Damage or loss caused by modification, alteration, or repair by any unauthorized party
- (b) Damage or loss caused by mishandling by the customer or person(s) with access to the product on the customer's premises.
- (c) Normal wear and tear.
- (d) Damage or loss caused by Acts of God or any other causes beyond cysum's control.
- (e) Damage or loss as a result of external bodies.
- (f) Damage or loss caused by another device that is connected to the Product.
- (g) Damage resulting from accidents, misuse, abuse, tampering, or failure of the customer to follow normal operating procedures outlined in the user manual
- (h) General maintenance and servicing.

ITHE WARRANTY IS VOID IF

The damages are a result of an accident, abuse, alteration, non-authorized usage, or use of electricity other than that indicated in this manual.

Certain parts of the equipment are not covered by the cysumwarranty due to the fact that they require replacement after multiple uses. For example:

buttons, pedals, seats, tires, etc. These parts will eventually require replacement at the owner's cost.

The manufacturers will not be held responsible for damages or monetary losses related to the purchase or use of their products. Tailwind denies responsibility for all physical and moral damages linked to the purchase and use of their products. In all cases, the damages cannot exceed the purchase price paid by the initial owner

THE WARRANTY IS VOID IF

The owner or user neglected to do routine maintenance required and the damages or problems are directly related to such neglect. It is the user's responsibility to keep the E-Bike in proper condition

The final decision to honor the warranty is taken by cysum personnel after a technical inspection when the owner returns defective products.

THE WARRANTY EXCLUDES

1. Replacement and shipping costs of products worn out by normal use.
2. Replacement and shipping costs of products due to problems related to neglect, abuse, or lack of maintenance.

WARRANTIES ARE NON-TRANSFERABLE

PRODUCT DATA

E-Bike Model: _____

Serial Number: _____

Purchase Date: _____

Order Number: _____



E-BIKE USER MANUAL

ShenZhen Shi QiXun KeJi Co., Ltd.

ADD

guangdong, shenzhen China

TEL

+86-159-0113-8693

WWW.CYSUM.COM

