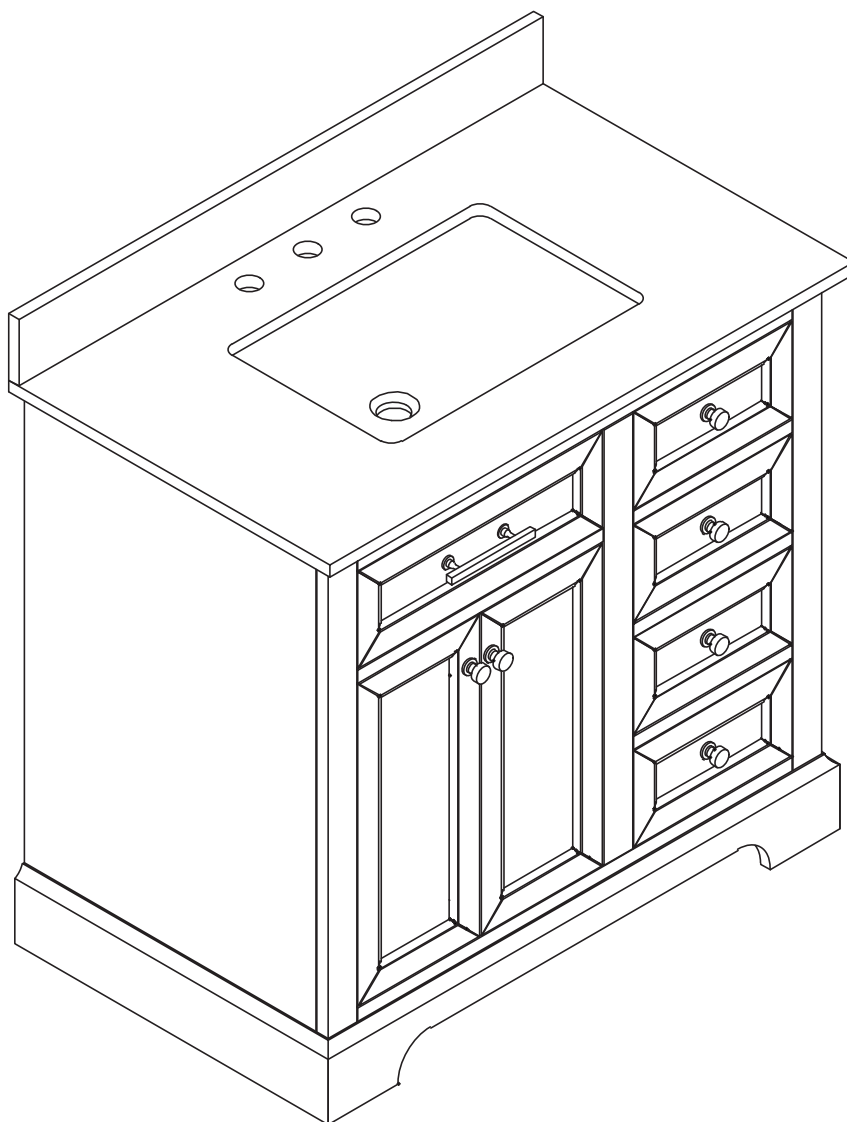


INSTALLATION INSTRUCTIONS

Bathroom Vanity



Drawings may not accurately depict product contours.



Prior to Installation:

- Please ensure to check your product packaging to confirm the presence of all necessary accessories. If any parts are missing, please contact us immediately.
- Owing to the size and weight of the cabinet, we recommend that it is handled by two adults, on a carpeted or padded area, in the room that it is intended for.
- Please do not use any tools other than those provided or recommended in these instructions.

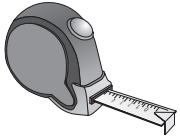
General Recommendations:

We recommend spending a brief moment familiarizing yourself with this manual before proceeding to follow the straightforward instructions. Remember to utilize the appropriate tools and wear necessary safety accessories at all times for your protection.

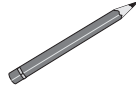
INSTALLATION INSTRUCTIONS

INSTRUCTIONS

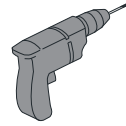
● Recommended Tools



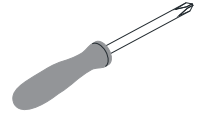
Tape measure



Pencil



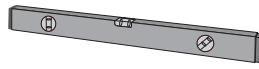
Electric screwdriver



Screwdriver



Wrench

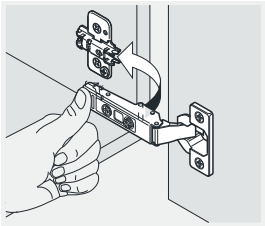


Level

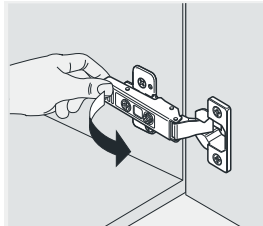


Caulking gun

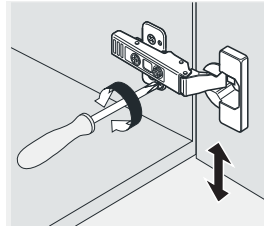
● Install, Remove, Or Adjust the Top Fast-Loading Hinge



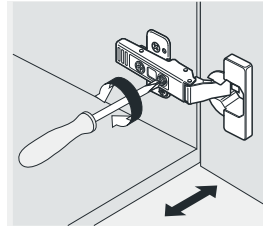
Install



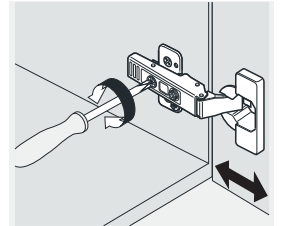
Remove



Adjust the height



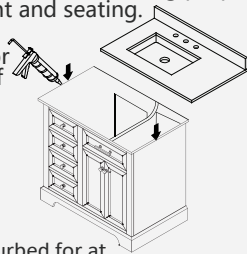
Adjust the lateral



Adjust the depth

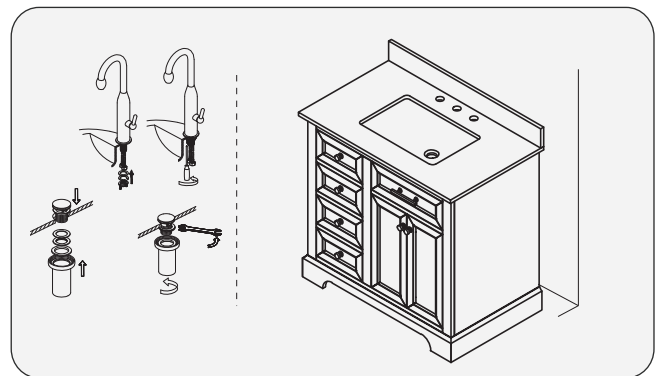
● Installing the Vanity Top

- a. Apply a bead of adhesive or silicone along each edge of the cabinet top.
- b. Carefully position the vanity top onto the cabinet, ensuring proper alignment and seating.



Allow the adhesive to cure undisturbed for at least 24 hours before using the vanity.

1. Attaching the Ceramic Basin



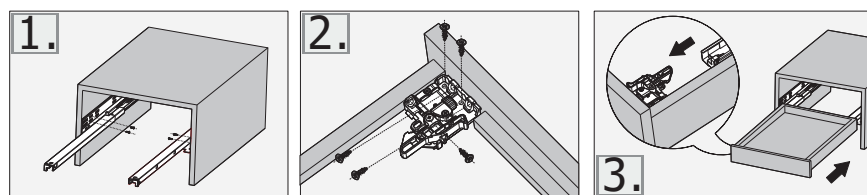
2. Installing the Pop-up, Faucet, and Basin (Not Included)

Drawings may not accurately depict product contours.

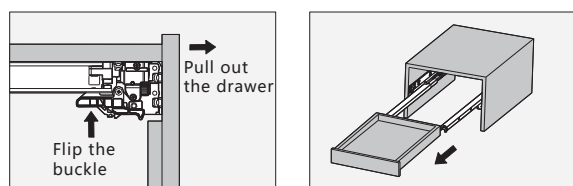
INSTALLATION INSTRUCTIONS

- Install and uninstall the drawers.

To install the drawer:



Removal of slide rail with front connector:



*Flip the buckle of the front connector, then pull the drawer out to disassemble it.

VANITY CARE GUIDE

Vanity Care

- Avoid direct contact with sharp objects to prevent exterior damage.
- Protect from direct sunlight to prevent aging and cosmetic damage.
- Refrain from placing hot objects directly onto the vanity surface.

Countertop Care

- Our tops are sealed before shipping but may stain, scratch, or chip due to their porous nature.
- Avoid placing hot items directly on the countertop to prevent damage.
- Immediately dry to prevent ring marks or staining.
- Use table mats under potentially scratching objects.
- Dust the vanity with a clean, soft fabric.
- Periodically clean with a cloth dampened in warm water. Use mild dishwashing liquid or stone soap if necessary, then dry with a soft cloth.
- Avoid chemical cleaners, abrasive products, or those containing lemon, vinegar, or acids.
- Reseal the top annually or as needed.

Cleaning and Maintenance

- Avoid using products containing bleach or ammonia.
- Use wood-friendly products on wooden base vanities.
- Use natural cleaning solutions or soap for exterior surfaces.

Drawings may not accurately depict product contours.