



amaircare®

Cleaning the air you breathe.

Portable, Whole House, Industrial and Commercial

HEPA AIR FILTRATION SYSTEMS

Product Catalogue 2016

Why is **Indoor Air Quality** Important?

One of the most serious health problems facing people today is poor Indoor Air Quality (IAQ) and it can affect any indoor space. Even in small doses, air pollution can irritate respiratory conditions, trigger allergic reactions and accumulation over time within the body can lead to chronic illness or in the most severe cases cause death. Although it's impossible to control pollution outside, the quality of the air indoors can be managed. And since people spend approximately 90% of the time indoors, it is essential to understand IAQ and how to improve it.

The origin of IAQ problems is directly related to the development of energy efficient buildings. Buildings constructed or retrofit to consume less energy are sealed tight and do not introduce any new fresh air from outside into the stale inside air. Irritants will remain inside, because there is little air circulation to "flush" the old contaminated air away.

Opening the window isn't the answer either; the outside air quality is rapidly deteriorating. First, think only of one pollution source: latex particles from worn tires on North American highways account for 5 million tons of airborne particulate; where do the particles go? Now think of all the other possible sources of pollution, where the pollution travels and how the substances react with one another when they have the chance to mix.

What is the answer?

A portable or installed air cleaner or filtering system can drastically improve Indoor Air Quality, if it's the right one.

POLLUTION can be categorized in three ways: PARTICULATE, VOLATILE ORGANIC COMPOUNDS (VOCs) and BIOLOGICALS.



PARTICULATE

The most harmful particles are so small you can't even see them.

These are known as Microfine Particulate and can penetrate and lodge deep in the respiratory system. Accumulation in the body of these particles over time can lead to great discomfort and eventually illness.



VOCs (VOLATILE ORGANIC COMPOUNDS)

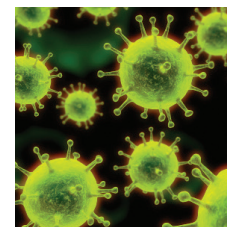
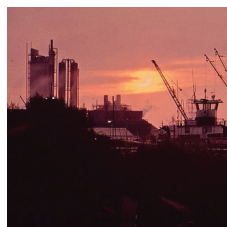
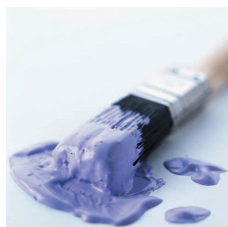
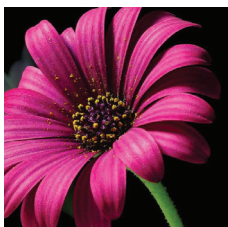
VOCs consist of chemicals in the gas phase. These gases are released from

many items in the home, including, but not limited to: cleaning products, furniture and carpets, paint and plastics. When these chemicals have the chance to react with each other new compounds can form.



BIOLOGICALS

Living organisms like bacteria and viruses are very small, but can be debilitating when they cause illness. Molds and fungus can also wreak havoc when inhaled into the human body.



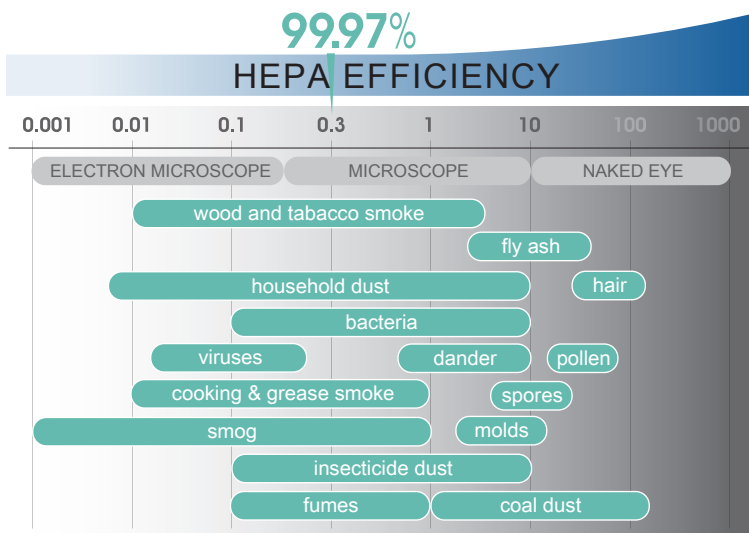
What is **HEPA**?

HEPA (**H**igh **E**fficiency **P**articulate **A**rrestance) is a filtration standard created by the U.S. Atomic Energy Commission. To qualify as a HEPA filter, a media must be 99.97% efficient at removing particles 0.3 microns in size. Due to the extremely high efficiency, HEPA filters have become widely used in medical, electronic and industrial applications. HEPA filters are composed of various sized borosilicate fibers, which are pressed together to form a net-like structure with openings large enough for air to pass through, but too small for most particulates.

Why is removing particles 0.3 micron important?

Approximately 85% of easily measurable particulate pollution in the air is 0.3 micron in size. Larger particles, such as; 0.5 and 1.0 make up a much smaller percentage of air pollution. Not only is the abundance of 0.3 micron particles a concern, but the small size allows these particles to travel deep into the lungs, penetrate the lung tissue and even enter the blood stream to cause discomfort, conditions and serious illness.

Removing 99.97% of the particles that pass through the Amaircare® HEPA filter will create an air quality oasis and reduce the stress air pollutions places on the respiratory system and body.



It is known that AIR POLLUTION is a hazard, but how that affects each individual can remain unclear.

The chart on the left provides a visual illustration of the sizing of some particulate substances.

A visual grasp of the size of pollution particles plays an important role in understanding the benefit of HEPA removal at 0.3 micron.

Amaircare® HEPA Systems are so efficient that laboratory testing revealed removal of 95% of particles at 0.1 micron!

What sets Amaircare® HEPA apart from the competition?

HEPA Focused Manufacturing

Amaircare® manufactures only mechanical HEPA filters. The technology is simple and proven. Many other methods of cleaning provide poor performance and quickly become obsolete. Amaircare® sticks with technology that works!

Perfect Seal™

Simply using HEPA media in an air filter doesn't make it a HEPA filter. If the HEPA media is not sealed properly, tiny harmful particles can sneak through. AmeriCAIR manufactures its own Amaircare® brand of HEPA filters. The filter media comes off a roll and is pleated for optimum surface area. After the pleating process, the filters are enclosed in protective screens and cast in food-grade compound at both ends for a 100% air-proof seal. Each filter is then tested with a laser particle counter for 99.97% efficiency.

Amaircare® filters maintain HEPA efficiency during operation in Amaircare® Air Filtration Systems because a Perfect Seal™ design is used to lock the filter within the system. All dirty air is forced through the filter and only clean air is released back into the room.

VOC Removal Options & the Stages of Filtration

A very important element of Amaircare®'s filtering system is the carbon stage of filtration. The carbon blanket adsorbs Volatile Organic Compounds or organic chemical compounds in the gaseous phase. This category of pollution is a growing concern. More and more substances in our environments release harmful VOCs that cause people to experience chemical sensitivity. Amaircare® offers a third stage carbon blanket or an upgrade carbon VOC canister for extra VOC capture.

The order of filter stages is extremely important too. Amaircare® systems place the carbon last to ensure VOC adsorption is maximized.

Modular Filters

Each stage of filtration inside Amaircare® systems can be replaced independently of the other stages to provide maximum performance and value from each filter.

Construction & Finishing

Many air filters and purifiers available today are made from plastic and contain adhesives or finishes that release VOCs. Amaircare® systems are constructed out of steel, powder coated and contain no harmful adhesives to ensure that the systems only subtract indoor air pollution and don't add to it. The all steel construction also makes the systems durable for many years of reliable clean air.

Case by Case Approach

You are unique and so is your environment. Amaircare® believes in providing air cleaning solutions designed for your needs rather than the "one-size-fits-all" approach.

Years of research & Expertise

Amaircare® has built air filtration systems for 16 years. Over this time, a lot of testing and information has been gathered and put to use in continually improving Amaircare® product to respond to current and future quality requirements.

Air Quality Terminology

- **HEPA:** High Efficiency Particulate Arrestance
- **CFM:** Cubic Feet per Minute
- **ACH:** Air Changes per Hour
- **VOCs:** Volatile Organic Compounds

How to properly size HEPA...

In order to clean the air in a space properly, the correct capacity air filtration system must be determined.

A formula to calculate the number of Air Changes per Hour (ACH) is used. For average conditions and an average environment, at least one ACH is required; however, more air changes will provide even cleaner air. In certain cases, many air changes may be necessary.

Sizing Formula

$$\text{CFM (of the HEPA system)} \times 60 \text{ (minutes in an hour)} \div \text{Volume of the Room (in cubic feet*)} = \# \text{ of ACH}$$

*Cubic Feet of a Room = Square Footage x Ceiling Height

THE AMAIRCARE® PORTABLE LINE

HEPA Air Filtration Systems



ROOMAID PORTABLE HEPA AIR FILTRATION SYSTEM



Enjoy HEPA filtration in a small room, hotel room, even take it in the car with the Auto Adaptor Kit. The Roomaid has 3-stage filtration: foam prefilter, HEPA filter and carbon inner filter. It's low in energy consumption, just 5 Watts and can plug into the 12V DC power source in the car or into the AC wall receptacle at home. High and Low speeds allow for easy airflow adjustment. Maintenance and filter replacement are easy with the snap on filter design. Third stage VOC canister upgrade available.

Replacement HEPA Filters

Pure White:	Item: 90-A-53WP-SO
Slate:	Item: 90-A-53SL-SO
Annual Filter Kit:	Item: 93-A-53ST00-SO
Plus Annual Filter Kit:	Item: 93-A-53PL02-SO
AC Adaptor Replacement	Item: 95-A-1KNA-AD
Auto Adaptor Kit:	
Pure White:	Item: 95-A-3VWP-AD
Slate:	Item: 95-A-3VSL-AD

SPECIFICATIONS

Maximum Recommended Room Size:
300 ft² (8' ceilings)

Filter Life: Prefilter - 1 year
HEPA Filter - 3 to 5 years
Inner Carbon - 6 months

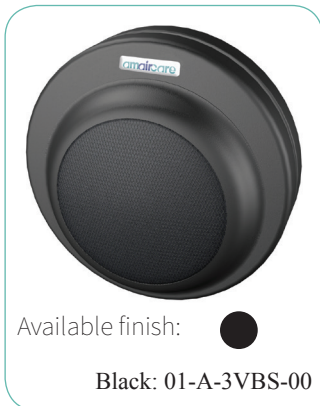
Airflow: 20 to 40 CFM
Power Consumption: 5 W
Dimensions: 8.5"D x 7.5"H
Weight: 4.5 lbs.
dB Rating @ 6': 40 to 47
2 Speed, 3 Position Switch Control
Construction: 24 gauge steel housing,
durable powder coated finish

Comes with an extra prefilter and an AC Adaptor Cord.

THE AMAIRCARE® PORTABLE LINE

HEPA Air Filtration Systems

XR-100 PORTABLE AIR FILTRATION SYSTEM



This system is great for use in the car or to take in a hotel room. It provides 3-stage filtration with a carbon filter, electret filter and zeolite filter to capture large particulate, odors, gases, fumes and submicron particulate, such as: pollen and bacteria. To save room, it conveniently and securely straps onto the back of the seat headrest in the car and plugs into the 12V DC power source. Weighing only 2.1 lbs, it's easy to bring along wherever clean air is required.

Annual Filter Kit:	Item: 93-A-AUST10-00
Cigarette Power Adaptor:	Item: 95-A-3VNA-AD
AC Power Adaptor:	Item: 95-A-1KNA-AD

SPECIFICATIONS
 Maximum Recommended Room Size:
 150 ft² (8' ceilings)
 Filter Life: 4-6 months
 Airflow: 20 CFM
 Power Consumption: 5 W
 Dimensions: 8"D x 3.5"H
 Weight: 2.1 lbs.
 dB Rating @ 6': 47
 Outflow: 360°
 Construction: 24 gauge steel housing with powder coated finish, I.M. ABS filter housing

2500 PORTABLE HEPA AIR FILTRATION SYSTEM



Ideally sized for use in an apartment or small house, the 2500 will provide 1 ACH for a 1300 sq. ft area*. It provides Amaircare®'s signature 3-stage filtration with a carbon prefilter, HEPA filter and carbon inner filter. Variable speed control allows for easy adjustment of airflow. Outflow of clean air exhausts from four vents to distribute air evenly. A third stage VOC canister upgrade is available.

Replacement 8" ET HEPA Filter:	Item: 90-A-08ME-ET
Super Standard Annual Filter Kit:	Item: 93-A-08SS00-ET
Super Plus Annual Filter Kit:	Item: 93-A-08SP02-ET

SPECIFICATIONS
 Maximum Recommended Room Size:
 1300 ft² (8' ceilings)
 Filter Life: Prefilter - 1 year
 HEPA Filter - 3 to 5 years
 Inner Carbon - 6 months
 Airflow: 175 CFM
 Power Consumption: 84 W
 Dimensions: 16"HEX x 13.5"H
 Weight: 15 lbs.
 dB Rating @ 6': 43 to 61
 Electronic Speed Control and Filter Monitor
 Construction: 24 gauge steel housing, durable powder coated finish

3000 PORTABLE HEPA AIR FILTRATION SYSTEM



Perfect for a sprawling living room, open concept home or small to medium house. Delivering 1 ACH for a 1690 sq. ft. area*, the 3000 is complete with Amaircare®'s signature 3-stage filtration: carbon prefilter, HEPA filter and carbon inner filter. Six durable castors make it easy to move anywhere! Airflow is simple to control with the Variable Speed Control. A third stage VOC canister upgrade is available.

Replacement 16" ET HEPA Filter:	Item: 90-A-16ME-ET
Super Standard Annual Filter Kit:	Item: 93-A-16SS00-ET
Super Plus Annual Filter Kit:	Item: 93-A-16SP02-ET

SPECIFICATIONS
 Maximum Recommended Room Size:
 1690 ft² (8' ceilings)
 Filter Life: Prefilter - 1 year
 HEPA Filter - 3 to 5 years
 Inner Carbon - 6 months
 Airflow: 225 CFM
 Power Consumption: 84 W
 Dimensions: 16"HEX x 23"H
 Weight: 22 lbs.
 dB Rating @ 6': 43 to 61
 Electronic Speed Control and Filter Monitor
 Construction: 24 gauge steel housing, durable powder coated finish



Chemically Sensitive? Asthmatic? High levels of VOCs in your area? Amaircare® offers an **UPGRADE CARBON VOC CANISTER** for additional VOC capture. All Amaircare® systems can be ordered with the VOC upgrade. PLUS ANNUAL KITS provide all of the upgraded replacement filters needed for one year.

* listed ACH is calculated by ft² x 8' ceilings

THE AMAIRCARE® INSTALLED LINE

HEPA Air Filtration Systems

AIRWASH® WHISPER 350 INSTALLED HEPA AIR FILTRATION SYSTEM



Available finish: ●

Meteorite: 13-A-1KME-00

Deliver clean air to every room in the house! This fully insulated installed HEPA Air Filtration System is whisper quiet and extremely efficient for particulate, bioburden and VOC removal. It easily delivers 1 ACH to a 2625 sq. ft. area*. No hassle installation, this unit can be quickly installed to the return air duct of the air handling system. The AWW350 diverts a portion of the air from the return air (approx. 30%), cleans the air and introduces it back into circulation.

Installation Kit available. A third stage VOC canister upgrade is available.

Replacement HEPA Filter:	Item: 90-A-16ME-ET
Annual Filter Kit:	Item: 93-A-16ST00-ET
Plus Annual Filter Kit:	Item: 93-A-16PL00-ET
VOC Ultra:	Item: 94-A-1602-UL
Installation Kit (6/8):	Item: 95-A-00NA-K1

SPECIFICATIONS

Maximum Recommended Area Size:
2625 ft² (8' ceilings)
Filter Life: Prefilter - 1 year
HEPA Filter - 3 to 5 years
Inner Carbon - 6 months
Airflow: 350 CFM
Power Consumption: 125 W
Dimensions: 14.375"W x 14.375" L x 27"H
Weight: 33 lbs.
Toggle ON - OFF Control
Construction: 24 gauge steel housing, durable powder coated finish
Intake: 8" D
Outflow: 6" D

AIRWASH® WHISPER 675 INSTALLED HEPA AIR FILTRATION SYSTEM



Available finish: ●

Meteorite: 14-A-1KME-00

This model services an area of just over 5050 sq. ft.* providing 1 (one) ACH. Full cabinet insulation allows for operation that is quiet in a wide variety of climates. Installation to the air handling system is quick and simple. The by-pass design allows for a portion of air to be diverted from the return air duct, cleaned and entered back into the air circulation. This method efficiently captures air pollution without any risk to the function of the air handling system. The AWW675 can also be installed to run independently. Installation Kit available.

A third stage VOC canister upgrade is available.

Replacement HEPA Filter:	Item: 90-A-16ME-ET
Annual Filter Kit:	Item: 93-A-16ST00-ET
Plus Annual Filter Kit:	Item: 93-A-16PL00-ET
VOC Ultra:	Item: 94-A-1602-UL
Installation Kit (8-10):	Item: 95-A-00NA-K2

SPECIFICATIONS

Maximum Recommended Area Size:
5050 ft² (8' ceilings)
Filter Life: Prefilter - 1 year
HEPA Filter - 3 to 5 years
Inner Carbon - 6 months
Airflow: 675 CFM
Power Consumption: 225 W
Dimensions: 14.375"W x 14.375" L x 27"H
Weight: 36 lbs.
Toggle ON - OFF Control
Construction: 24 gauge steel housing, durable powder coated finish
Intake: 10" D
Outflow: 8" D

Many items purchased today are made from plastic and manufactured offshore from unknown substances. The VOCs that these items off-gas are held in living spaces by energy efficient building construction. Upgrading the third stage carbon filter in an Amaircare® System to a **CARBON VOC CANISTER** will provide enhanced protection.

Capture VOCs in the CANISTER instead of your body!



* listed ACH is calculated by ft² x 8' ceilings

THE AMAIRCARE® INSTALLED LINE

HEPA Air Filtration Systems

7500 INSTALLED HEPA AIR FILTRATION SYSTEM



Need more CFM? Then this is the system! 1000 CFM provides 1 ACH for 7500 sq. ft.* Installs easily with two 8" diameter outflow connections and one 14" diameter intake connection. Right and left side knock-outs provide versatility for installation. Unit modules can be combined to increase airflow ratings when required. End door removes for easy filter maintenance. Dual HEPA cartridge design allows for enhanced performance.

A third stage VOC canister upgrade is available.
 7500 Cart available for portable use, see page 9.

Replacement HEPA Filter (Single):	Item: 90-A-16ME-ET
Annual Filter Kit (Single):	Item: 93-A-16ST00-ET
Plus Annual Filter Kit (Single):	Item: 93-A-16PL00-ET
VOC Ultra (Single):	Item: 94-A-1602-UL

SPECIFICATIONS

Maximum Recommended Area Size:
 7500 ft² (8' ceilings)
 Filter Life: Prefilter - 1 year
 HEPA Filter - 3 to 5 years
 Inner Carbon - 6 months
 Airflow: 1000 CFM
 Power Consumption: 320 W
 Dimensions: 27"W x 38"L x 40"H
 Weight: 82 lbs.
 Variable Speed Switch Control
 Construction: 18 gauge steel housing,
 durable powder coated finish
 Intake: 14" D Outflow: 2 or 4 8" D

10 000 INSTALLED HEPA AIR FILTRATION SYSTEM



The largest capacity model in the Amaircare® line! 1000 CFM delivers 1 ACH to a 7500 sq. ft. area*. The TriHEPA design provides ample collection of airborne particulate, biologicals and VOCs. Three individual filter modules employ 3 stage filtration and are easy to maintain through the removable end panel door. Set the function speed to suit any use with the variable speed control.

A third stage VOC canister upgrade is available.
 Unit modules can be combined to provide increased airflow ratings when required.

Replacement HEPA Filter (Single):	Item: 90-A-16ME-ET
Annual Filter Kit (Single):	Item: 93-A-16ST00-ET
Plus Annual Filter Kit (Single):	Item: 93-A-16PL00-ET

SPECIFICATIONS

Maximum Recommended Room Size:
 7500 ft² (8' ceilings)
 Filter Life: Prefilter - 4 months
 HEPA Filter - 3 to 5 years
 Inner Carbon - 6 months
 Airflow: 1000 CFM
 Power Consumption: 600 W
 Dimensions: 17"W x 28"L x 50"H
 Weight: 130 lbs.
 dB Rating @ 6': 60 to 70
 Variable Speed Switch Control
 Construction: 18 gauge steel housing,
 durable powder coated finish
 Intake/Outflow: Rectangular Connections
 - 10" x 12"

COULDN'T YOU USE MORE FRESH AIR?

Sealed homes require the introduction of fresh air, this is often achieved with a Heat Recovery Ventillation System/Energy Recovery Ventillation System. The filters provided in an HRV/ERV don't protect you from the pollution brought in with the fresh air.

An Amaircare® HEPA Air Filtration System is the perfect compliment to a HRV/ERV. An Amaircare® System will ensure that the fresh air brought in is filtered for microfines, biologicals and VOCs.

* listed ACH is calculated by ft² x 8' ceilings

AMAIRCARE® CARTS & SPECIAL USE PRODUCTS

HEPA Air Filtration Systems



6000V AIRWASH CART HEPA AIR FILTRATION SYSTEM



Filter out air pollution created by a wide variety of applications: construction & renovation, fire & mold remediation, welding and print shops, among others. The steel tube cart and heavy duty tires allow for easy transportation even in rugged environments. Freshen up the air by importing and filtering exterior air through the extra intake (2" - with cap closure). Easy to access filter for maintenance. Protective steel mesh safely covers the air outflow.

A removable IEC power cord is included.
 A third stage VOC canister upgrade is available.
 30 lb. Carbon only canister available for special applications.

Replacement HEPA Filter:
 Annual Filter Kit:
 Plus Annual Filter Kit:
 VOC Ultra:
 Aluminum Mesh Prefilter:

Item: 90-A-16ME-ET
 Item: 93-A-16ST00-ET
 Item: 93-A-16PL00-ET
 Item: 94-A-1602-UL
 Item: 91-A-D106-NA

SPECIFICATIONS

Maximum Recommended Area Size:
 4500 ft² (8' ceilings)

Filter Life: Prefilter - 1 year
 HEPA Filter - 3 to 5 years
 Inner Carbon - 6 months

Airflow: 600 CFM
 Power Consumption: 160 W
 Dimensions: 27"W x 26"L x 38"H
 Weight: 92 lbs.
 Variable Speed Switch Control
 Construction: 18 gauge steel housing,
 durable powder coated finish
 Intake: 10" x 12" with aluminum mesh
 prefilter for easy pressure cleaning
 Outflow: 8" Round
 Fresh air intake: 2" Round

* listed ACH is calculated by ft² x 8' ceilings

AMAIRCARE® CARTS & SPECIAL USE PRODUCTS

HEPA Air Filtration Systems

7500 AIRWASH® CART HEPA AIR FILTRATION SYSTEM



Dual HEPA cartridges provide 1000 CFM airflow. Steel tube cart and heavy duty tires allow for easy transportation even in rugged environments. Front swivel wheels make maneuvering simple. Refresh the air by importing and filtering exterior air through the extra intake (2"D - with cap closure). Filters are easy to access for maintenance. Safety mesh covers the air outflow. Comes with two 8"D collars for ducted installations.

A removable IEC power cord is included.
A third stage VOC canister upgrade is available.
30 lb. Carbon only canisters available for special applications.

Replacement HEPA Filter (Single):	Item: 90-A-16ME-ET
Annual Filter Kit (Single):	Item: 93-A-16ST00-ET
Plus Annual Filter Kit (Single):	Item: 93-A-16PL00-ET
VOC Ultra (Single):	Item: 94-A-1602-UL
Aluminum Mesh Prefilter (Single):	Item: 91-A-D606-NA

SPECIFICATIONS

Maximum Recommended Area Size:
7500 ft² (8' ceilings)

Filter Life: Prefilter - 1 year
HEPA Filter - 3 to 5 years
Inner Carbon - 6 months

Airflow: 1000 CFM
Power Consumption: 320 W
Dimensions: 27"W x 40"L x 38"H
Weight: 118 lbs.

Variable Speed Switch Control
Construction: 18 gauge steel housing, durable powder coated finish
Intake: 10" x 12" with aluminum mesh prefilter x 2
Outflow: 8" Round x 2
Fresh air intake: 2" Round

VOC - CHEM REMOVAL AIR FILTRATION SYSTEM



Have a special application that requires extreme VOC removal? This portable system comes standard with washable Foam Prefilter and Ultra VOC Canister (contains 30 lbs. of granulated carbon). 6"D intake allows for targeted clean up. Bottom clean air outflow on four of six sides. Easily adjust airflow with the variable speed control. Move system around smoothly on bottom mounted castors. Filter service is trouble-free though system lid access. Available with HEPA Cartridge upon request.

Replacement Ultra VOC Canister:	Item: 94-A-1602-UL
Replacement HEPA Filter:	Item: 90-A-16ME-ET
Annual Filter Kit:	Item: 93-A-16ST00-ET
Plus Annual Filter Kit:	Item: 93-A-16PL00-ET

SPECIFICATIONS

Maximum Recommended Area Size:
2250 ft² (8' ceilings)

Filter Life: Prefilter - 1 year
Ultra VOC - 3 to 5 years

Airflow: 300 CFM
Power Consumption: 125 W
Dimensions: 16"HEX x 23"H
Weight: 55 lbs.

Variable Speed Switch Control
Construction: 24 gauge steel housing, durable powder coated finish

Don't let VOCs affect work efficiency, quality or the health and safety of the work environment. VOCs that off-gas from processes and materials in a work environment can be hazardous and costly. Upgrading the third stage carbon filter or replacing the second stage HEPA filter in an Amaircare® System to a **CARBON VOC CANISTER** or **ULTRA VOC CANISTER** will provide enhanced protection from chemicals, gases and VOCs.



* listed ACH is calculated by ft² x 8' ceilings

AMAIRCARE® REPLACEMENT HEPA FILTERS

for HEPA Air Filtration Systems



ROOMAID HEPA - Snap On
5.3" x 8.5"D
Colour: Pure White
Item: 90-A-53WS-SO



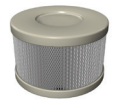
ROOMAID HEPA - Snap On
5.3" x 8.5"D
Colour: Slate
Item: 90-A-53SL-SO



ROOMAID HEPA - Snap On
5.3" x 8.5"D
Colour: Sandtex White
Item: 90-A-53WS-SO



ROOMAID HEPA - Snap On
5.3" x 8.5"D
Colour: Sandtex Black
Item: 90-A-53BS-SO



ROOMAID HEPA - Snap On
5.3" x 8.5"D
Colour: Sandstone
Item: 90-A-53SS-SO



1100 HEPA - Snap On
8" x 8.5"D
Colour: Off White
Item: 90-A-08WO-SO



1100 HEPA - Snap On
8" x 8.5"D
Colour: Sandtex White
Item: 90-A-08WS-SO



1100 HEPA - Snap On
8" x 8.5"D
Colour: Sandtex Black
Item: 90-A-08BS-SO



ROOMAID HEPA - Snap On
5.3" x 8.5"D
Colour: Sandtex White
Item: 90001117



8" HEPA - Easy Twist
8" x 13"D, for 2700
Colour: Sandtex White
Item: 90-A-08WS-ET



8" HEPA - Easy Twist
8" x 13"D, for 2700
Colour: Sandtex Black
Item: 90-A-08BS-ET



8" HEPA - Easy Twist
8" x 13"D, for 2700
Colour: Sandstone
Item: 90-A-08SS-SO



8" HEPA - Easy Twist
8" x 13"D, for 2500ET/2500HV/AWW250D
Colour: Meteorite
Item: 90-A-08ME-ET



8" HEPA - Moulded
8.25" x 13"D, for 2500/2550
Item: 90-A-08NA-MO



14" HEPA - Easy Twist
14" x 13"D, for 3500
Colour: Sandtex White
Item: 90-A-14WS-ET



14" HEPA - Easy Twist
14" x 13"D, for 3500
Colour: Sandtex Black
Item: 90-A-14BS-ET



14" HEPA - Easy Twist
14" x 13"D, for 3500
Colour: Sandstone
Item: 90-A-14SS-ET



16" HEPA - Easy Twist
16" x 13"D, for 3000ET/AWW350/675,
4000HV, 6000V (Cart), 7500 (Cart), 10 000
Colour: Meteorite
Item: 90-A-16ME-ET



16" HEPA - Moulded
8.25" x 13"D, for 3000, 3050, 4000, 4050,
4000V, 5000V
Item: 90-A-16NA-MO

AMAIRCARE® ANNUAL REPLACEMENT FILTERS

for HEPA Air Filtration Systems

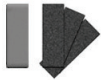
STANDARD ANNUAL FILTER KITS



XR100 Annual Filter Kit
3 sets of filter replacement pouch includes:
carbon, electret and zeolite
Item: 93-A-AUST10-00



8" Easy Twist Super Annual Filter Kit
3 carbon prefilters, 2 carbon inner filters
Item: 93-A-08SS00-ET



ROOMAID Annual Filter Kit
1 foam prefilter, 3 carbon inner filters
Item: 94001041
6 Pack Item: 93-A-53-ST00-SO



14" Easy Twist Annual Filter Kit
1 foam prefilter, 2 carbon inner filters
Item: 93-A-14ST00-ET



1100 Annual Filter Kit
1 foam prefilter, 2 carbon inner filters
Item: 93-A-08ST00-SO



16" Moulded Annual Filter Kit
3 carbon prefilters, 2 carbon inner filters
Item: 93-A-16ST00-MO



8" Moulded Annual Filter Kit
3 carbon prefilters, 2 carbon inner filters
Item: 93-A-08ST00-MO



16" Easy Twist Annual Filter Kit
1 foam prefilter, 2 carbon inner filters
Item: 93-A-16ST00-ET



8" Easy Twist Annual Filter Kit
1 foam prefilter, 2 carbon inner filters
Item: 93-A-08ST00-ET



16" Easy Twist Super Annual Filter Kit
3 carbon prefilters, 2 carbon inner filters
Item: 93-A-16SS00-ET

PLUS ANNUAL FILTER KITS (with VOC Canister)



ROOMAID Plus Annual Filter Kit
1 foam prefilter, 1 VOC canister (100% carbon)
Item: 93-A-53PL02-SO



14" Easy Twist Plus Annual Filter Kit
1 foam prefilter, 1 VOC canister (100% carbon)
Item: 93-A-14PL02-ET



1100 Plus Annual Filter Kit
1 foam prefilter, 1 VOC canister (100% carbon)
Item: 93-A-08PL02-SO



16" Moulded Plus Annual Filter Kit
3 carbon prefilters, 1 VOC canister (100% carbon)
Item: 93-A-16PL02-MO



8" Moulded Plus Annual Filter Kit
3 carbon prefilters, 1 VOC canister (100% carbon)
Item: 93-A-08PL02-MO



16" Easy Twist Plus Annual Filter Kit
1 foam prefilter, 1 VOC canister (100% carbon)
Item: 93-A-16PL02-ET



8" Easy Twist Plus Annual Filter Kit
1 foam prefilter, 1 VOC canister (100% carbon)
Item: 93-A-08PL02-ET



16" Easy Twist Super Plus Annual Filter Kit
3 carbon prefilters, 1 VOC canister (100% carbon)
Item: 93-A-16SP02-ET



8" Easy Twist Super Plus Annual Filter Kit
3 carbon prefilters, 1 VOC canister (100% carbon)
Item: 93-A-08SP02-ET



16" VOC Ultra Kit
1 foam prefilter, 1 VOC canister (100% carbon)
Item: 94-A-1602-UL



For circumstances requiring increased adsorption capacity of specific VOCs, such as: formaldehyde and ammonia, special VOC Canister fill options are available upon request.

AMAIRCARE® PRODUCT MAINTENANCE

for HEPA Air Filtration Systems

AIR FILTRATION SYSTEM MAINTENANCE

In order to provide optimal performance, Amaircare® recommends the following replacement schedule for the three stages of filtration:

FOAM PREFILTER - washed every 3 - 4 months or when visually dirty,
replaced every year

CARBON PREFILTER - replaced every 4 months

HEPA CARTRIDGE - replaced every 2 to 5 years

INNER CARBON BLANKET - replaced every 3 - 6 months

VOC CANISTER - replaced every 9 months to 1 year

The recommended replacement schedule is based on average indoor air quality conditions. Some applications may require more frequent filter replacement.

SIMPLE TIPS FOR IMPROVING YOUR INDOOR AIR QUALITY

- Store paint in the shed or garage, if it's detached, instead of the house
- Run the bathroom exhaust when showering to eliminate moisture that could allow mold to develop
- Use the exhaust fan in the kitchen when cooking to expel odor and airborne grease
- Scented candles may smell nice, but they can release particulate pollution that may cause respiratory irritation and other conditions.
- Limit the use of aerosol hair spray and cleaning sprays in the home
- Ensure that cat-litter box is stored away from the return air of your HVAC system
- Maintain HVAC system filters according to the recommended schedule
- Carpets, if not maintained, can be a source or collector of many pollutants. Vacuum regularly and thoroughly and plan a shampooing schedule
- Decorate with low VOC paints, carpet and furniture whenever possible
- Consider installing an HRV/ERV to ensure ventilation
- To help limit particulate and mold in damp or high humidity storage areas, eliminate storage of old and unused paper products, such as: cardboard boxes, books and magazines
- Ensure dryer ducting is sealed and vents properly

Use the [INDOOR AIR QUALITY INVESTIGATION FORM](#) on page 14 to evaluate your environment and to establish the correct capacity Amaircare® HEPA Air Filtration System for the space.

AMAIRCARE® LIMITED WARRANTY

for HEPA Air Filtration Systems

Americair Corporation warrants Amaircare HEPA Air Filtration Systems to the original retail purchaser as follows:

1. The motor/fan part is warranted for five (5) years from the date of purchase under the following conditions:
2. All other component parts (except filters) are warranted for one (1) year from the date of purchase under the following conditions:
 - i. The Amaircare HEPA Air Filtration System has failed under normal use, due to defects in material or workmanship.
 - ii. The Amaircare HEPA Air Filtration System has been operated according to the manufacturers recommendations.
 - iii. The Amaircare HEPA Air Filtration System has been operated in compliance with the voltages specified on the product.
 - iv. An authorized Amaircare dealer or a service provider agreed upon by both the consumer and the manufacturer has performed an inspection.
 - v. There have been no attempts to modify the Amaircare HEPA Air Filtration System from its original condition.

Actions contrary to the above will void the Amaircare warranty.

Amaircare HEPA Air Filtration Systems that have qualified for warranty and met all of the above conditions will, at the discretion of the manufacturer, have the failing components repaired or replaced or, at the option of the manufacturer, be replaced with a new system.

MAKING A WARRANTY CLAIM

The consumer may make a warranty claim by contacting any authorized Amaircare dealer. The dealer will then contact the manufacturer, Americair Corporation, to obtain a Return Goods Authorization (RGA).

If the consumer is unable to contact an authorized dealer in their area, they should directly contact the manufacturer, Americair Corporation, at 1 800 268 7732 or info@amaircare.com to obtain a Return Goods Authorization.

To obtain a Return Goods Authorization, a valid serial number and original proof of purchase must be presented to the manufacturer.

RETURNING THE SYSTEM FOR WARRANTY INSPECTION AND/OR REPAIR

Prior to returning any product for warranty consideration, the consumer must remove all filter components.

In the interest of consumer and employee safety, Americair Corporation will not receive any filter media. Any Systems returned for inspection with the filters included WILL NOT BE RECEIVED by Americair Corporation and will be returned to the consumer/dealer at the consumer/dealer's expense.

Excluding the filters, the consumer is required to return all other original system components, including adaptors if applicable.

Americair Corporation will not accept returned products on the basis of buyer's remorse.



Dealer Contact Information

INDOOR AIR QUALITY INVESTIGATION FORM

Customer: _____ Date of Installation: _____

Age of Home: _____ Type of Home: _____ Size (ft³): _____

Number of Occupants in Home: _____ Pets: _____

Occupants with Allergies: Y N Mild Moderate Severe

Existing Heating/Furnace - Type: _____ Size: _____

Existing Methods of Air Treatment: Portable System UV Light HRV/ERV/Fresh Air

Recommendations for Source Control (ex: litter box location, storage of cleaning products/paint cans, etc.)

OUTDOOR AIR QUALITY INFORMATION

Outdoor Temperature: _____ Outdoor Humidity Level: _____

Outdoor Particle Count: _____ @ 0.3 micron/ft³

Weather Conditions (check all that apply)

Snow Rain Cloud Wind Sun

Weather Notes:

INDOOR AIR QUALITY INFORMATION

Room	Temperature	Humidity	Particle Count - Before Installation	Particle Count - After Installation	Follow up Particle Count
1.	<input type="text"/>	<input type="text"/>	<input type="text"/>	<input type="text"/>	<input type="text"/>
2.	<input type="text"/>	<input type="text"/>	<input type="text"/>	<input type="text"/>	<input type="text"/>
3.	<input type="text"/>	<input type="text"/>	<input type="text"/>	<input type="text"/>	<input type="text"/>
4.	<input type="text"/>	<input type="text"/>	<input type="text"/>	<input type="text"/>	<input type="text"/>
5.	<input type="text"/>	<input type="text"/>	<input type="text"/>	<input type="text"/>	<input type="text"/>
6.	<input type="text"/>	<input type="text"/>	<input type="text"/>	<input type="text"/>	<input type="text"/>
7.	<input type="text"/>	<input type="text"/>	<input type="text"/>	<input type="text"/>	<input type="text"/>
8.	<input type="text"/>	<input type="text"/>	<input type="text"/>	<input type="text"/>	<input type="text"/>
9.	<input type="text"/>	<input type="text"/>	<input type="text"/>	<input type="text"/>	<input type="text"/>

CLEAN AIR NOTES:



AMERICAIR CORPORATION
770 Gana Court, Mississauga, ON, L5S 1P1
t: 905 565 9488 f: 905 565 9866
toll free: 800 268 7732
info@amaircare.com www.amaircare.com