

FREE BLOCK

new!



Friday³

Completing the Quilt




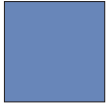

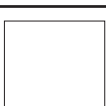
Finished Size Shown: 68" x 84"

Add additional borders as desired.

Blocks cut with **From MARTI MICHELL** Template Set A
Long Skinny Sashing Stars cut with ruler #8232

Making a Free Block Friday 3 Sampler Quilt

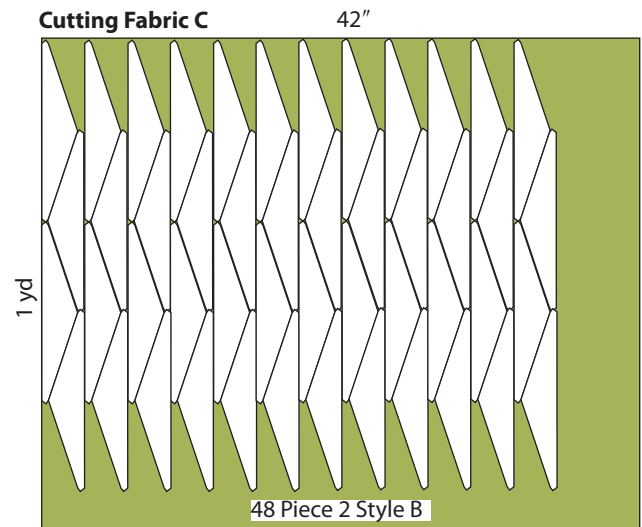
Double or Small Queen, Finished Size: 68" x 84" (See note in Cutting Borders)

Fabric	Glue Fabric Swatch Here	Position in Quilt	Yardage
A		4" finished cornerstones (20)	½ yard
B		Large triangles and corners in outer sashing border	½ yard
C		Frames in sashing units, green	1 yard
E		Large triangles in sashing units, white	1 yard, or ⅝ yd each if using 2 different whites.

Featuring style B frame cut with Long Skinny Sashing Ruler, Product #8232.

Fabric C—1 yard

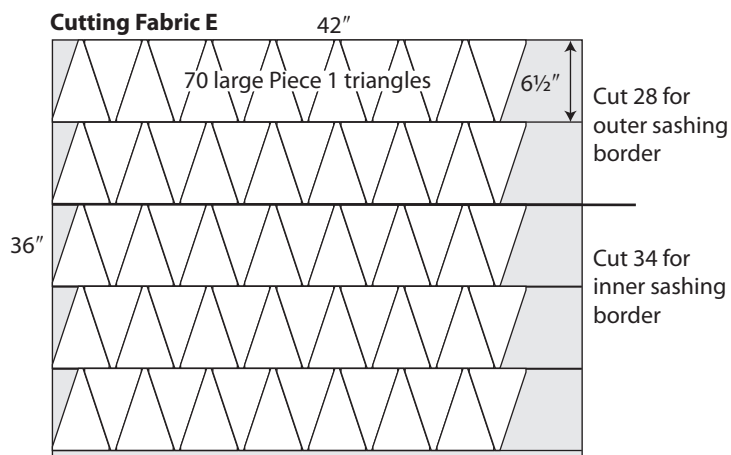
1. Cut 12 strips 3" wide on the lengthwise grain parallel to the selvage. From these strips, cut 48 (4 each strip) large Piece 2, style B really long skinny triangles.
2. See pattern pages and directions with Long Skinny Sashing Star Set for cutting seamless style B triangles. Carefully cut corner tips to match template and pattern. Accurate corners make it easy to align the pieces accurately for sewing.



Cutting

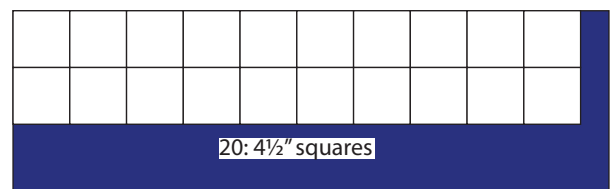
Fabric E—1 yard

Cut 5 strips 6½" wide the full width of fabric. Stack and use Triangle 1 of the Long Skinny Sashing Star Set to cut 14 triangles from each strip. The 6½" mark should be on one edge of the strip and the blunt tip of the triangle on the other edge. You will need 70 large triangles.



Fabric A—½ yard

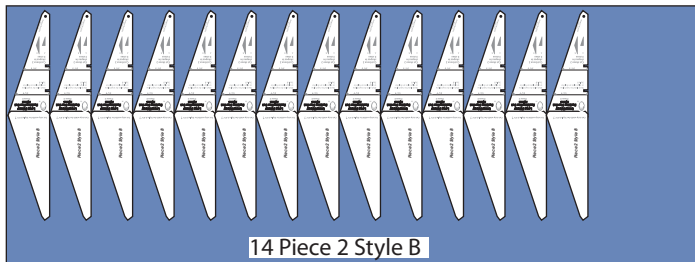
Cut 20 4½" squares using template B-8 or, if there is a motif in your fabric, the From MARTI MICHELL Fussy Cutter tool #8297.



Fabric B— $\frac{5}{8}$ yards

Cut a strip 18" wide and the full length of fabric.

42"

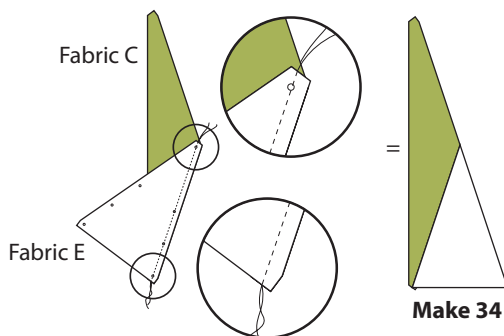


Sewing Sashing Units

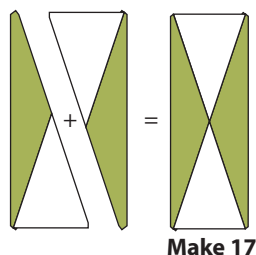
Making 17 Inner Sashing Units



1. Sew 34 fabric E Piece 1 tall triangles to 34 fabric C long skinny Piece 2 Style B triangles, carefully aligning corners as shown. Press toward the Piece 1 triangle.



2. Sew units joined in step 1 together, again carefully aligning ends of pieces. (If they are not the same length, it is much more difficult to get a match at the center. If they were cut accurately and sewn with a $\frac{1}{4}$ " seam, they almost always are a perfect fit.) Press to one side.



3. Make the interior sashing units. Join a fabric A cornerstone to 9 units made in step 2. To 3 of these 9 units, add a fabric A cornerstone to both ends.



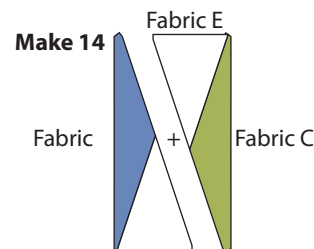
Make 9



Make 3

Making Outer Sashing Units

1. In the same manner, make 14 sashing units for the "outside" sashing strips using fabrics as shown.



2. Make the sashing rows for the top and bottom of the quilt. Join a fabric A cornerstone to the units made above, in the arrangements shown below.



Make 2—1 for the top sashing row and 1 for the bottom row



Make 2 for the top sashing row



Make 2 for the bottom sashing row

Making the Quilt Interior

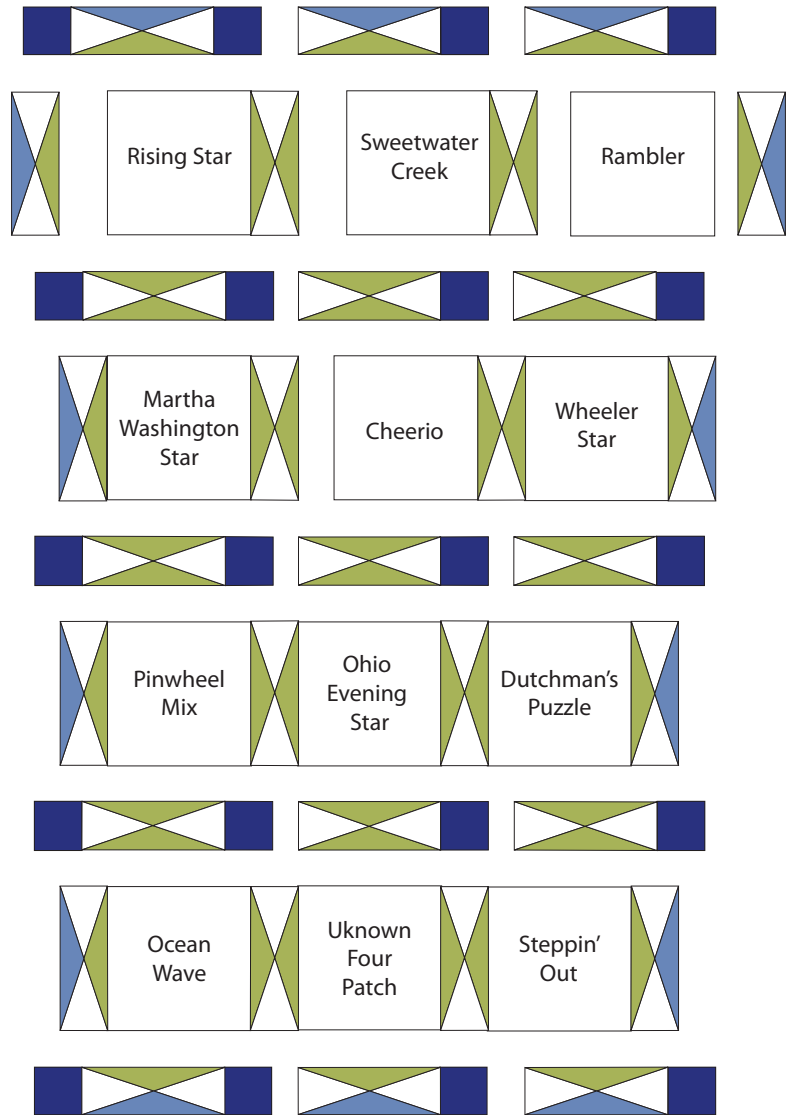
Arrange your blocks as desired. Our arrangement is illustrated here and on page 1. Inner and outer sashing units create the completed interior.

It is your choice how to assemble the quilt. Two options are offered here. In the Rows Layout, shown here, you join the completed units into 9 rows, gradually making pairs of rows and finally joining all rows to complete the interior unit of the quilt.

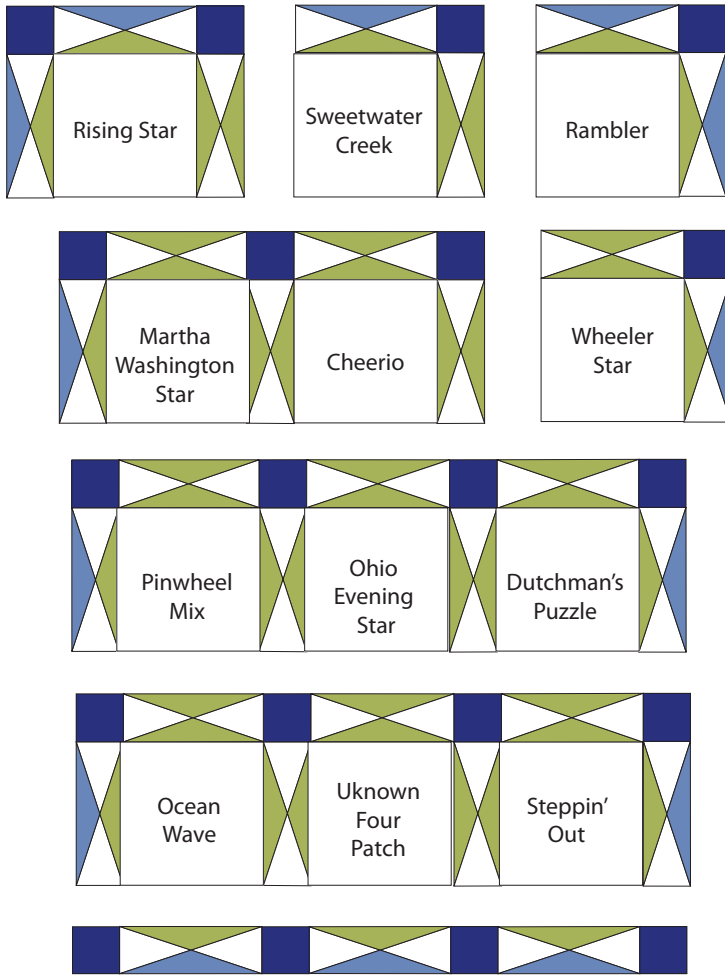
In the Block Units Layout on the next page, you make block units first, then join the units into rows and join the rows.

The quilt interior should now measure 52½" by 68½", including seam allowances.

Rows Layout

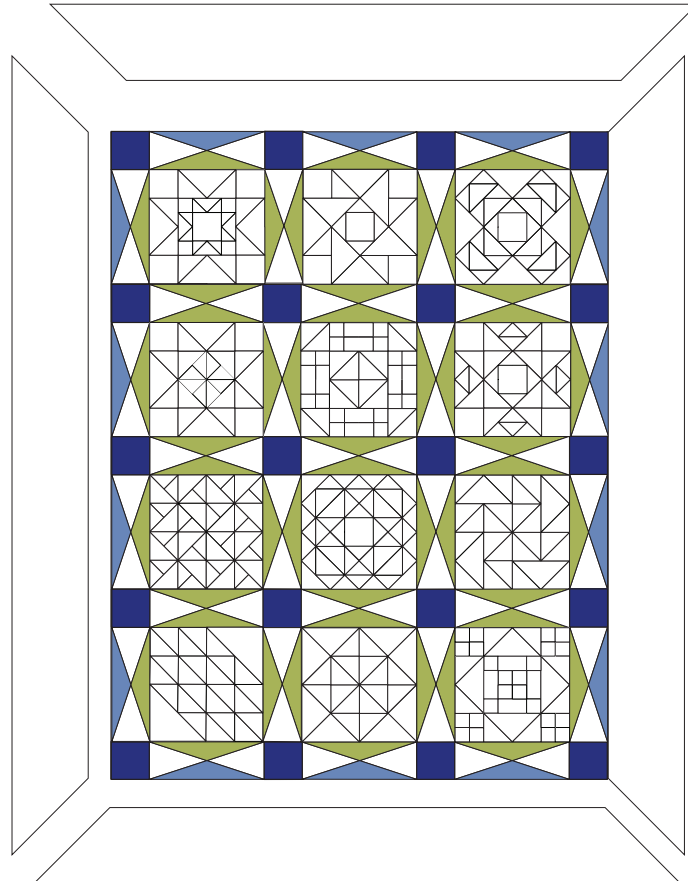


Block Units Layout



Completing the Quilt

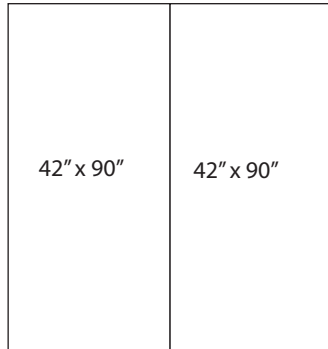
We used a border stripe to add what appears to be 2 outer borders—it is actually one 8" border. If you would like to make a larger size, simply add additional borders.



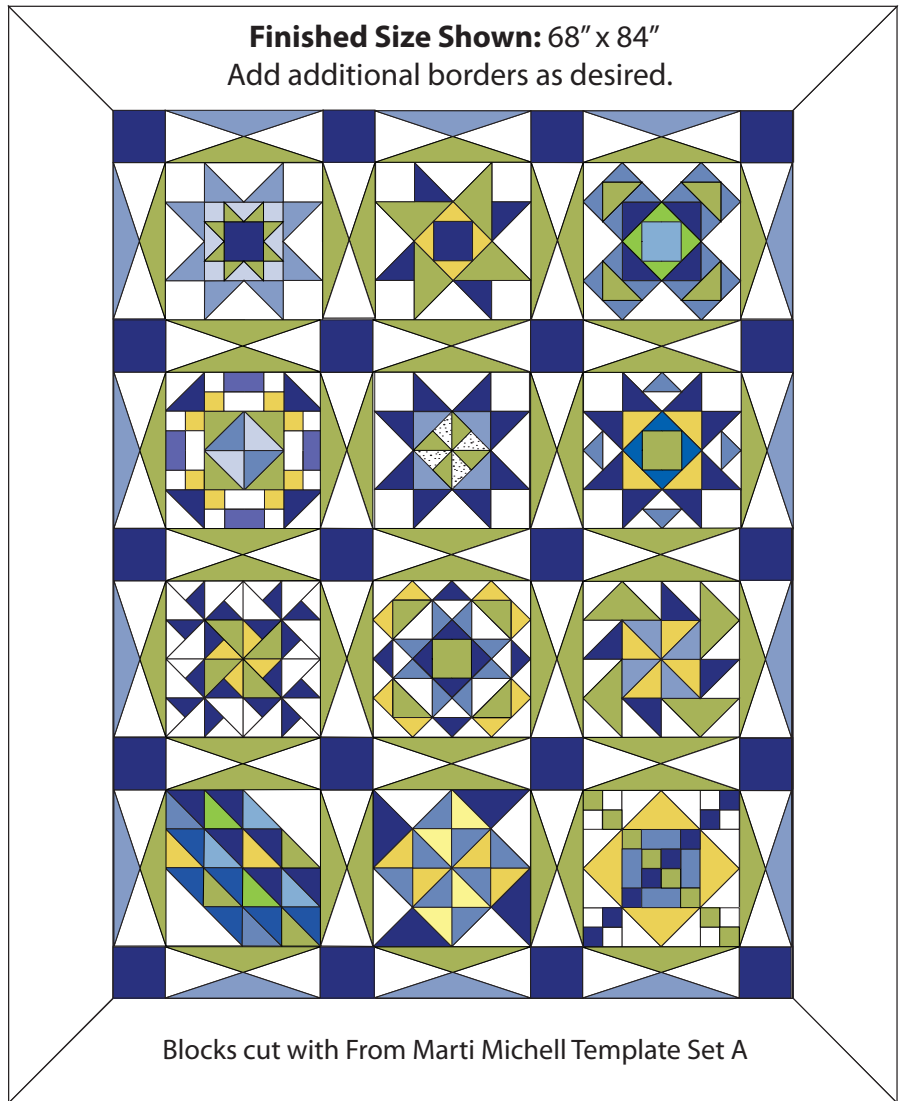
Backing

Five yards for the backing allows enough extra size for long arm quilting.

From the backing material, cut 2 pieces 42" x 90" and join as shown below.



Layer, quilt as desired and bind.



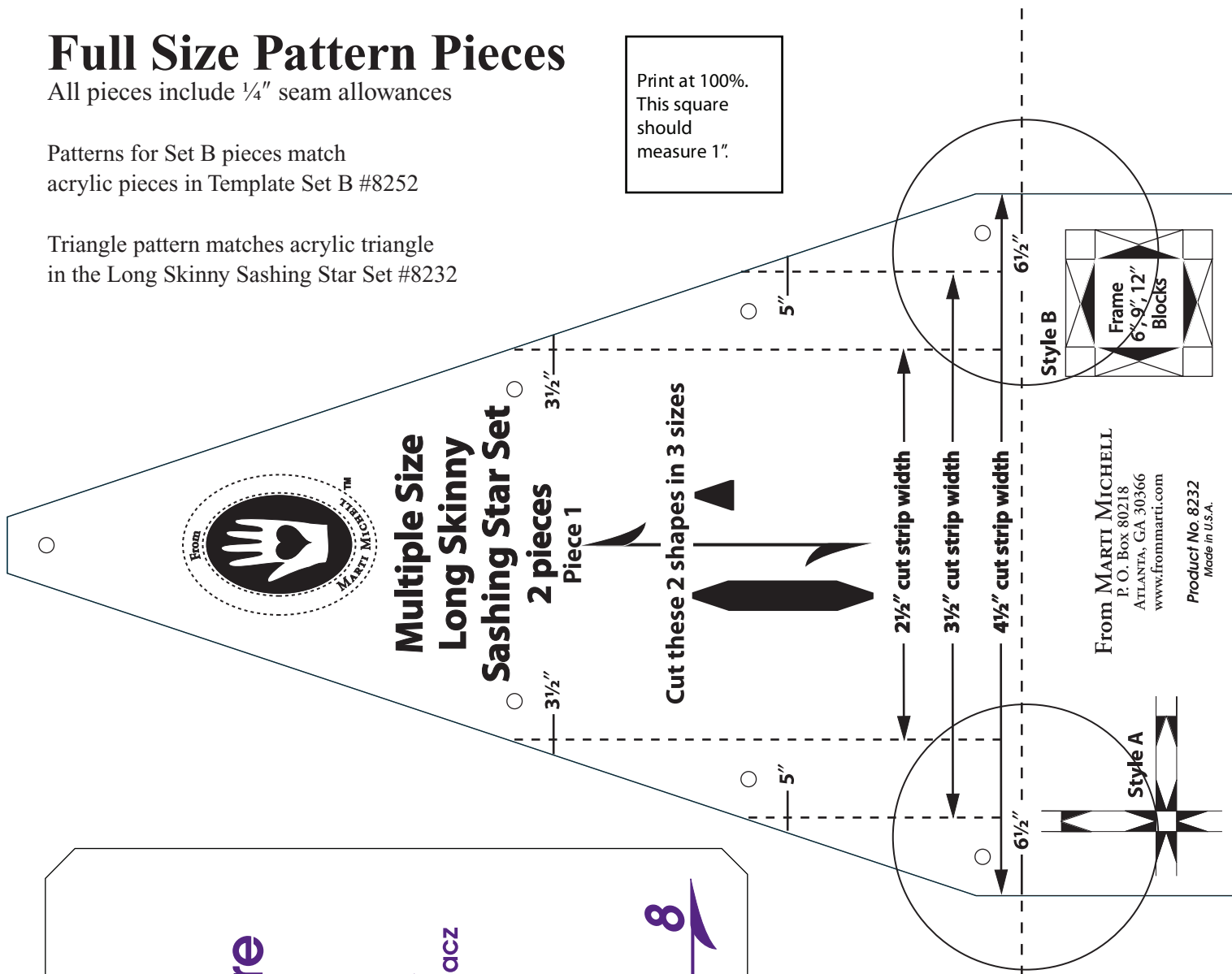
Full Size Pattern Pieces

All pieces include 1/4" seam allowances

Patterns for Set B pieces match acrylic pieces in Template Set B #8252

Triangle pattern matches acrylic triangle in the Long Skinny Sashing Star Set #8232

Print at 100%.
This square
should
measure 1".



From **MARTI MICHELL**
P. O. Box 80218
ATLANTA, GA 30366
www.frommarti.com
Product No. 8232
Made in U.S.A.



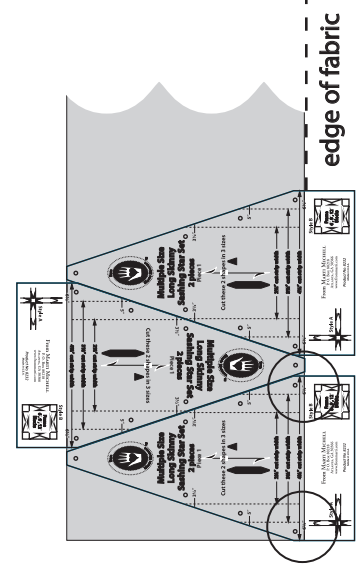
The 4" Square Basic Set (7 pieces)

Corner Concept by
Jane Hackworth Gruchacz

From **MARTI MICHELL**
P. O. Box 80218
ATLANTA, GA 30366

Made in U.S.A.

8



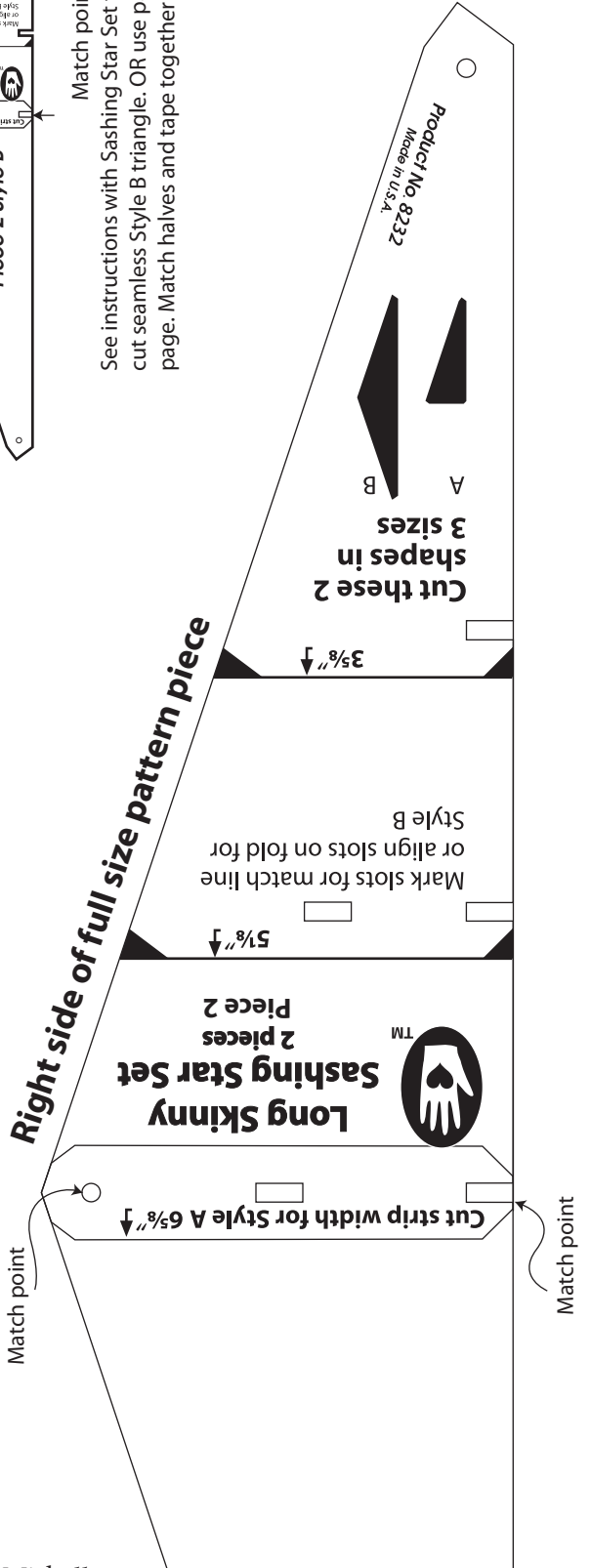
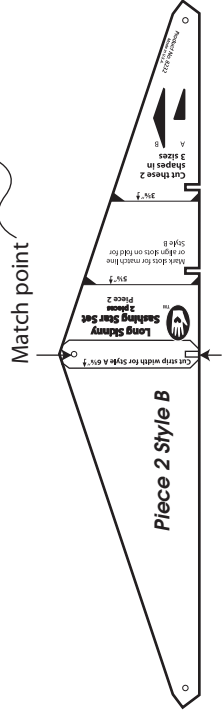
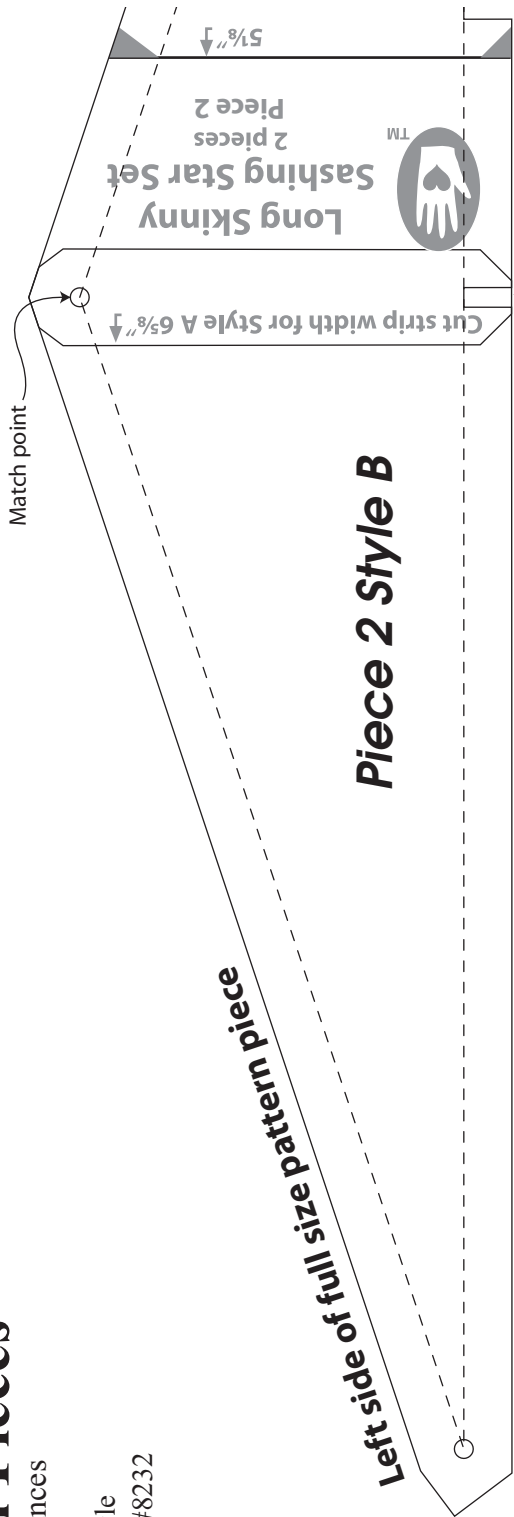
Piece 1 triangles, 6 1/2" wide strip

Full Size Pattern Pieces

All pieces include 1/4" seam allowances

Triangle patterns match acrylic triangle in the Long Skinny Sashing Star Set #8232

Print at 100%.
This square
should
measure 1".



See instructions with Sashing Star Set for flipping template to cut seamless Style B triangle. OR use paper patterns on this page. Match halves and tape together for full pattern piece.