

# 64 Monette

As seen in *The Farmer's Wife 1930s Sampler Quilt* book by Laurie Aaron Hird

## From MARTI MICHELL Perfect Patchwork Templates Conversion Chart

For personal use in conjunction with the book and these From MARTI MICHELL Tools:

Perfect Patchwork Template Set A, Product #8251



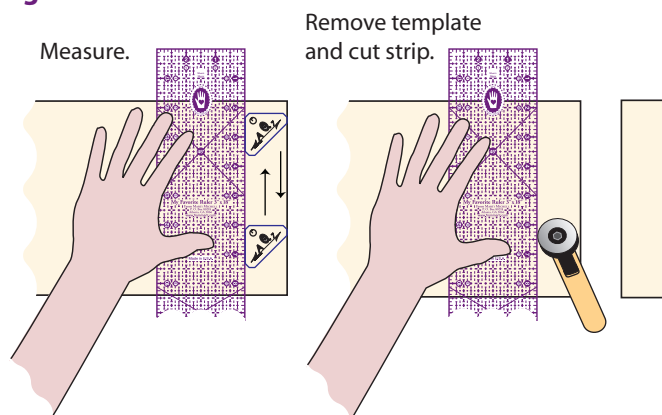
Monette Template	64A	64B	64C	64D
is the same as FMM Set	Strip set (see instructions below)	Square cut with A-7	2 1/8" square	2 1/8" x 2 1/16"

Observe grainline arrows on templates when cutting.

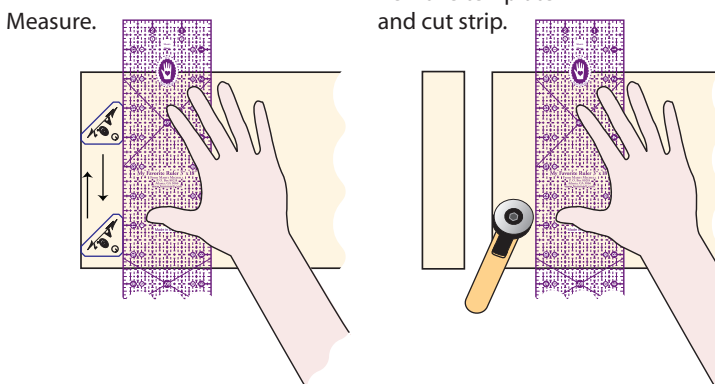
### Cutting a Square with Template A-7

1. Use triangle template A-7 to measure strip width (1 1/16"). Cut strips approximately 8" long.

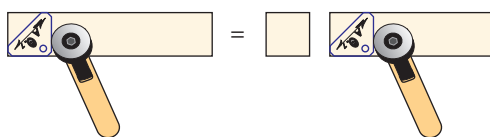
#### Right-handed



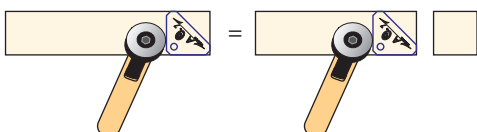
#### Left-handed



2. If you are right-handed, true up the left end of the strip. Place A-7 template on strip as shown. Cut 4 squares.



If you are left-handed, true up the right end of the strip. Place A-7 template on strip as shown. Cut 4 squares.

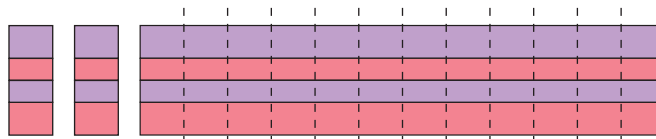


### Making the Pieced Squares

1. Cut 2 strips of fabrics 1 and 2 (lavender and pink) a full 1" plus a thread or 2 (actually 1 1/32") wide by 14 1/2" long. Join the strips to make a 4-piece strip set, alternating the fabrics. True up one short end and trim to 14". Press seam allowances in one direction.



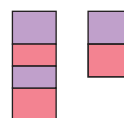
2. Beginning at the trued-up end, sub-cut strip set into 12 strips a full 1" wide and as long as 64D.



Eight strips will be used for the top and bottom of the pieced squares.

3. Using a seam ripper, remove the center seam on the 4 remaining strips to separate them into 8 pairs (a full 1" x 1 1/2" pieced rectangles) for the sides of the pieced units.

8 each:



### Making the Block

1. Arrange the pieced strips and squares cut with A-7 as shown in the book. Join them. Make 4.

2. Arrange the pieced squares from step 1, rectangles and center square as shown in the book. Join to make 3 rows. Press seams toward the rectangles.

3. Join the rows to complete the block. Press seams toward the center row.